



Supplement of

Passive seismic experiment “AniMaLS” in the Polish Sudetes (NE Variscides)

Monika Bociarska et al.

Correspondence to: Monika Bociarska (bociarska@igf.edu.pl)

The copyright of individual parts of the supplement might differ from the article licence.

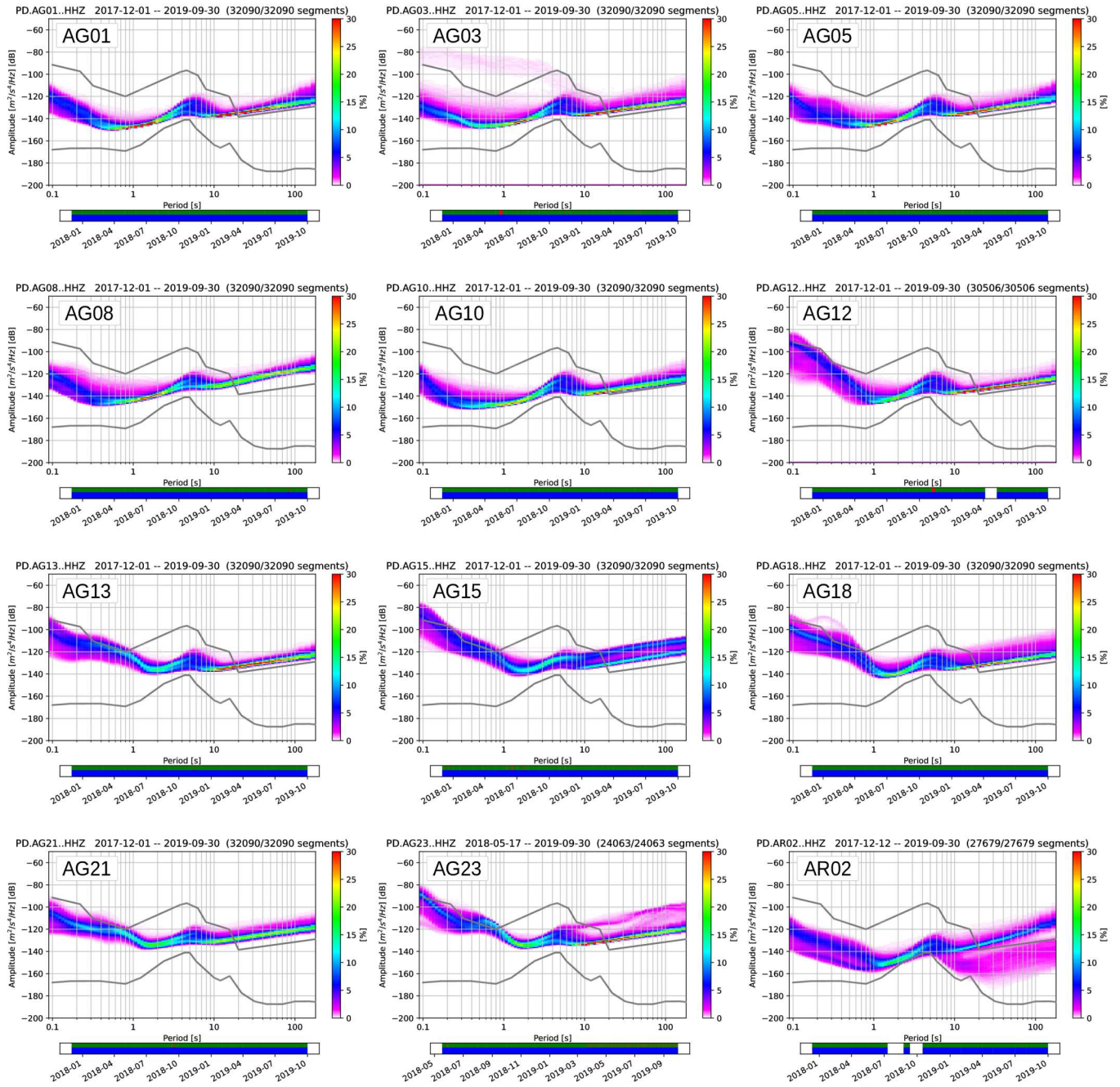


Figure S1: Probabilistic power spectral density (PPSD) on the Z-component for all temporary and permanent stations used in the experiment. The time span for calculation is 22 months from Jan 2018 to Oct 2019. Black lines mark New High and Low Noise Models (NHNM, NLNM; Peterson 1993).

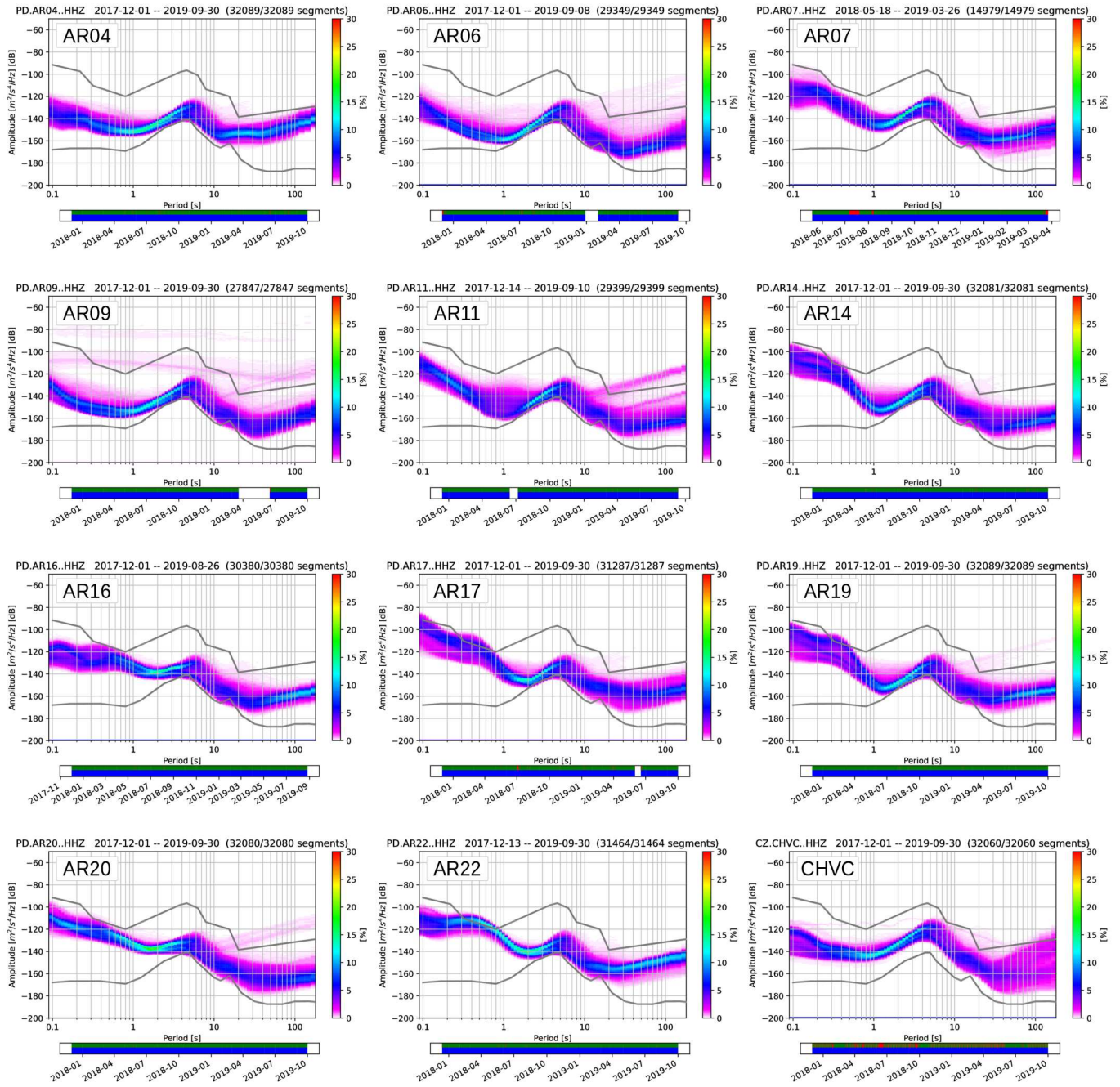
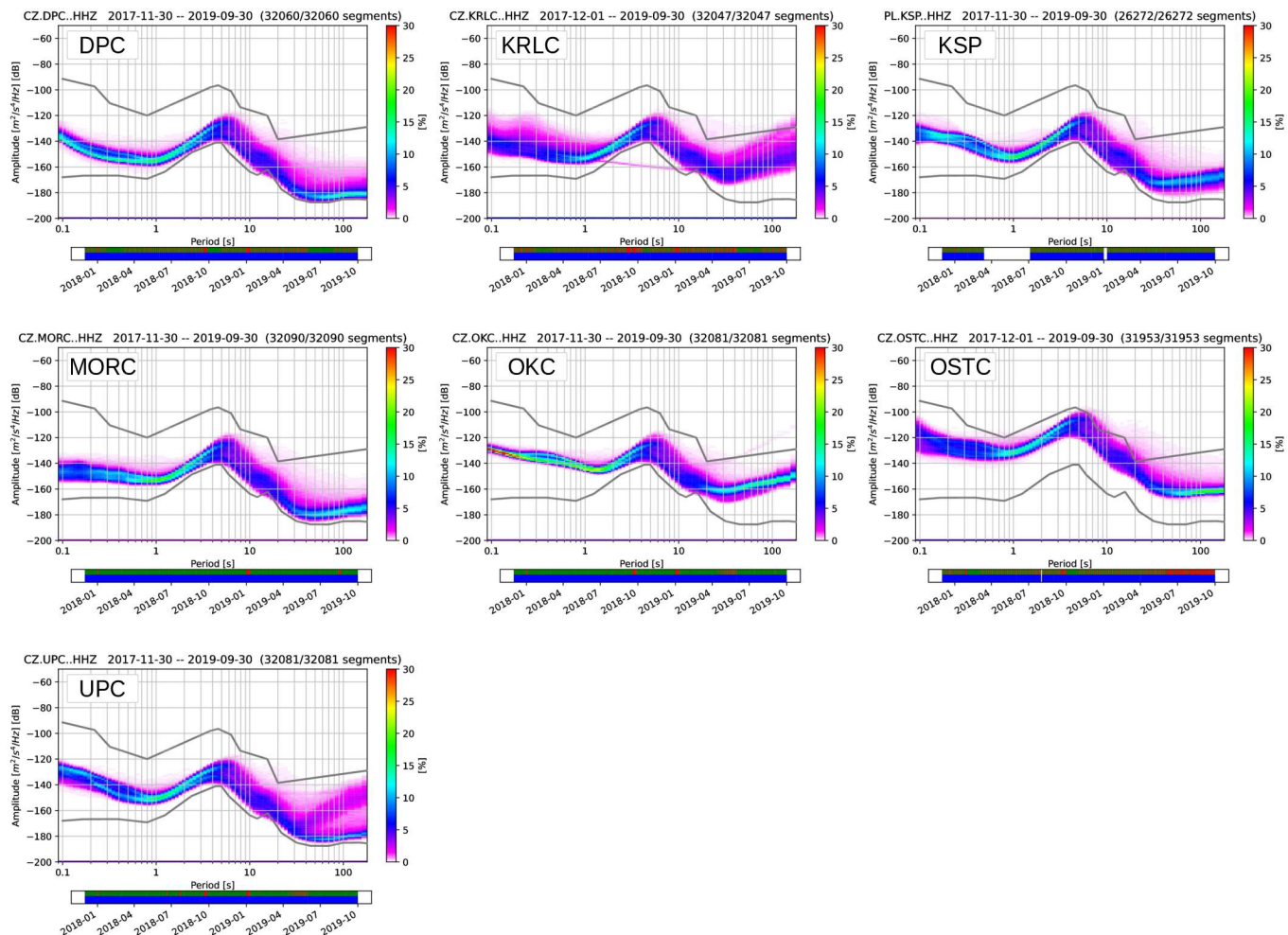


Figure S1 (continued)



10 Figure S1 (continued)