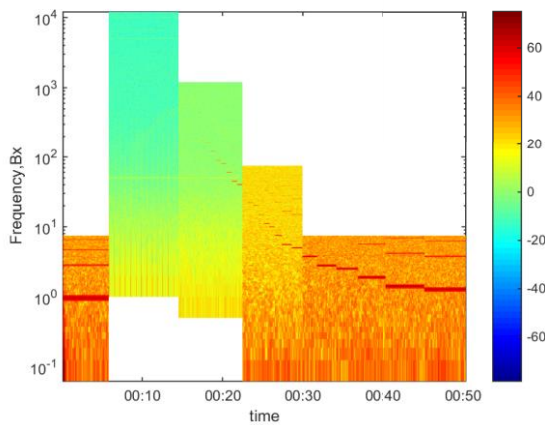
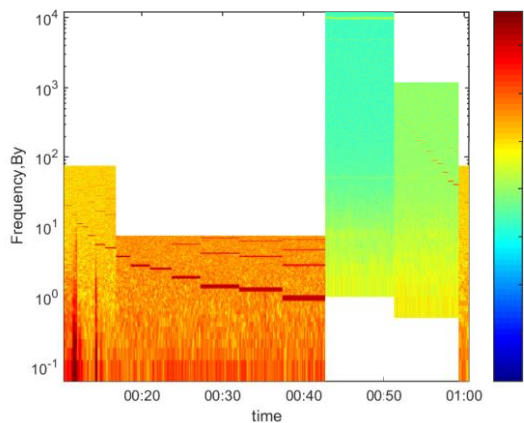


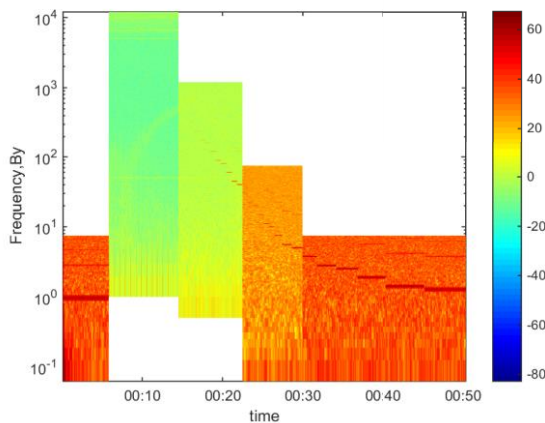
(a) Channel BH1 signal (B_x component)



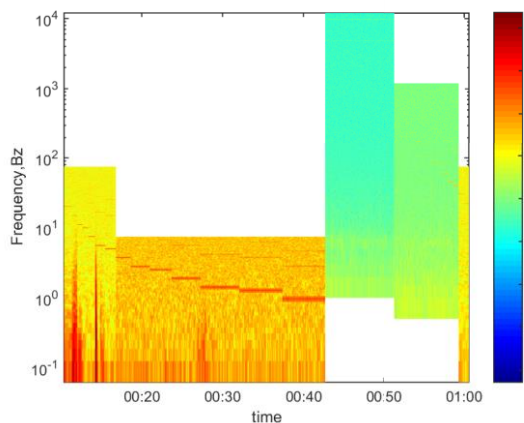
(b) Channel BH2 signal (B_x component)



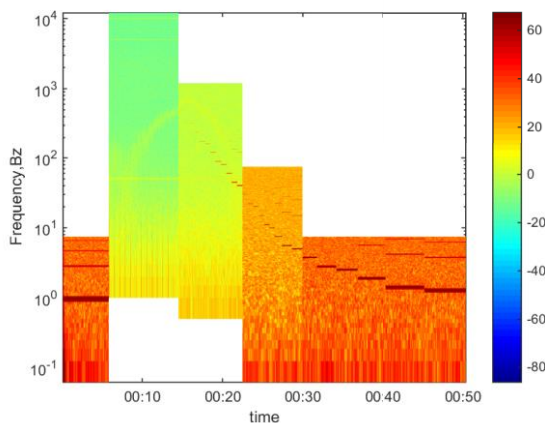
(c) Channel BH1 signal (B_y component)



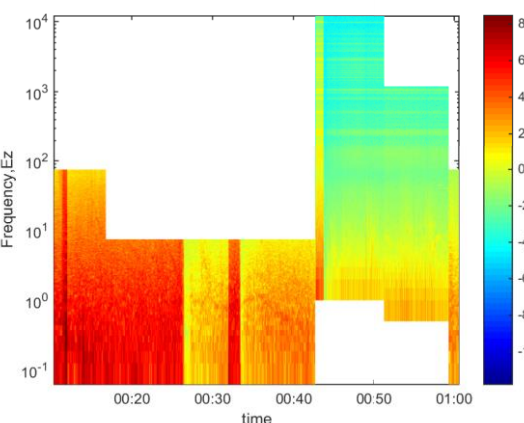
(d) Channel BH2 signal (B_y component)



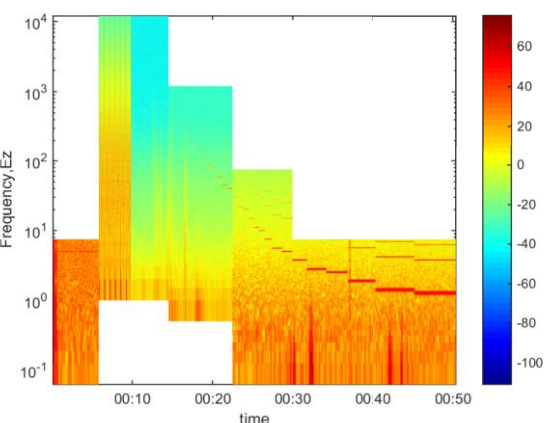
(e) Channel BH1 signal (B_z component)



(f) Channel BH2 signal (B_z component)



(g) Channel BH1 signal (E_z component)



(h) Channel BH2 signal (E_z component)