



Supplement of

Analysis of geomagnetic observatory data and detection of geomagnetic jerks with the MOSFiT software package

Marcos Vinicius da Silva et al.

Correspondence to: Jürgen Matzka (jmat@gfz-potsdam.de)

The copyright of individual parts of the supplement might differ from the article licence.

Magnetic Observatories and Stations Filtering Tool (MOSFiT)

MOSFiT is part of my Master's project in geophysics. A python tool developed to investigate the secular variation (SV) of the Earth's geomagnetic field, accelerate the geomagnetic jerk detection and check geomagnetic observatory data quality.

Actually works for every INTERMAGNET geomagnetic observatory (1-min IAGA-2002 data format).

The package is separetade in modules called `data_processing_tools`, `utility_tools`, `support_functions` and `main_functions`.

There are functions used to reduce the external field contribution (5 options), calculate the SV by different methods, resample data by different means, plot the data and detect geomagnetic jerks.

All functions have a docstring with the documentation, including inputs, outputs and how to use.

Documentation summary

- [Setting up MOSFiT package](#)
 - [Package installation](#)
 - [Downloading IAGA-2002 data](#)
- [Package modules import suggestion](#)
- [Requirements](#)
- [Modules functions](#)
 - [main_functions](#)
 - [data_processing_tools](#)
 - [utilities_tools](#)
- [main_functions usage](#)
- [data_processing_tools functions usage](#)
- [utilities_tools functions usage](#)

Setting up MOSFiT package

The MOSFiT python package was built to work with INTERMAGNET minute mean data in the IAGA-2002 format, in order to analyse the SV and check INTERMAGNET Magnetic Observatory (IMO) data quality. The definitive and quasi-definitive data are mainly used because of higher quality and reliability, especially for SV studies. However, we can also apply MOSFiT to others types of IAGA-2002 data, i.e. provisional data).

Package installation

MOSFiT is developed in the Python 3 language. The package can be compiled in the command window or in a "jupyter notebook enviroment".

You can download MOSFiT in: <https://github.com/marcosv9/Thesis-Marcos>. In this same link, there is a documentation of how to use the package functions, with some examples.

Downloading IAGA-2002 data

In order to use MOSFiT, it is necessary to have the data stored in a local computer.

This data can be downloaded from the INTERMAGNET website (<https://www.intermagnet.org/>), directly from the INTERMAGNET ftp server (<ftp://ftp.seismo.nrcan.gc.ca/intermagnet/>) or by using the MOSFiT function called "download INTERMAGNET file" (by choosing datatype, year, month and the list of observatories).

MOSFiT will only read filenames in the same format of INTERMAG-NET IAGA-2002 2. After the data is downloaded, the user may organize all files from different observatories in a single or multiple folders.

Most MOSFiT functions require an input called 'station'. It is the 3 letter IAGA code of the INTERMAGNET observatory. In MOSFiT there is a database with all INTERMAGNET observatories registered (IAGA code, latitude, longitude and altitude, this informations are used in many data processing functions). If you want to use MOSFiT with an observatory or location that are not registered in the database, there is a MOSFiT class called IMO that includes any location into the database. See utilities_tools section for an explanation about how to include any location.

Package modules import suggestion

To use the developed funtions, is necessary to import them. I suggest to use the following statements to import the modules.

```
import data_processing_tools as dpt
import utilities_tools as utt
import main_functions as mvs
import support_functions as spf
```

Requirements

- scipy
- chaosmagpy
- numpy
- pandas
- matplotlib
- glob2
- h5py
- pathlib2
- pwlf
- chaosmagpy
- cartopy (optional)

Modules functions

Here are the principal functions of each module and a quick description.

Functions listed here are fundamental in the geomagnetic data processing.

There are others functions into the modules, including the support_functions module that was not mentioned. Most of them are internally used by the package.

main_functions

```
import main_functions as mvs
```

Function	Description
mvs.load_intermagnet_files (station, starttime, endtime, files_path)	read and merge IAGA-2002 file format into a pandas DataFrame
mvs.sv_obs (station, starttime, endtime, plot_chaos, files_path)	interactive data processing workflow util geomagnetic jerk detection
mvs.plot_sample (station, dataframe, save_plots ...)	automatically plot hourly, daily, monthly and annual means
mvs.plot_sv (station, starttime, endtime, df_station, df_chaos, ...)	automatically plot SV with options to correct the data and plot CHAOS prediction
mvs.plot_tdep_map (time, deriv, plot_changes, station)	plot a global map of the SV or SA as well as their changes (from CHAOS prediction)

data_processing_tools

```
import data_processing_tools as dpt
```

Function	Description
dpt.resample_obs_data (dataframe, sample, apply_percentage)	Resample obs minute or hourly means into hourly, daily, monthly or annual means
dpt.hampel_filter_denoising (dataframe, window_size, n_sigmas, ...)	Denoising filter based on median absolute deviation
dpt.night_time_selection (station, dataframe)	Select the nighttime period from geomagnetic data. Default from 22pm to 2am LT.
dpt.keep_quiet_days (dataframe)	Select only top 10 quiet days from each month
dpt.remove_disturbed_days (dataframe)	Remove top 5 disturbed days from each month
dpt.kp_index_selection (dataframe, kp)	Select only periods with Kp values \leq the defined limit. Default is 2

Function	Description
dpt.calculate_sv (dataframe, method, source, ...)	Calculate SV from geomagnetic data using monthly or annual means (input must be output from <code>load_intermagnet_files</code> or <code>chaos_model_prediction</code>). Default is monthly means
dpt.chaos_model_prediction (station, starttime, endtime, n_core, ...)	Predict diferent sources of the geomagnetic from CHAOS-7 model (core, crust, magnetospheric (GSM + SM)).
dpt.external_field_correction_chaos_model (station, starttime, endtime, ...)	Correct magnetospheric field from geomagnetic data
dpt.jerk_detection_window (station, window_start, window_end, ...)	Automatically adjust two straight line segments in the SV for an user specified time window

utilities_tools

```
import utilities_tools as utt
```

Function or Class	Description
<code>utt.download_intermagnet_data()</code>	Download observatory quasi-definitive or definitive data from INTERMAGNET fpt server and save in the computer
utt.hdz_to_xyz_conversion (station, dataframe, files_path)	Check the existence of reported HDZ components and convert to XYZ components
utt.IMO (self, station, latitude, longitude, ...)	Class representing IMO. Can be used to check IMO informations on MOSFiT database (IMO existence, latitude, longitude, altitude) as well as add a new IMO or delete

main_functions usage

The `main_functions` package module consist of functions to load (read) and visualize IAGA-2002 data.

It also has an interactive function [sv_obs](#) that includes the most important data processing options.

load_intermagnet_files

This function is the most important, since it reads any geomagnetic data following the IAGA-2002 format.

The output is a pandas DataFrame indexed by time and the columns are the X, Y and Z geomagnetic components.

Its output is used as input is most of the data processing functions.

```
load_intermagnet_files(station = 'XXX', starttime = 'yyyy-mm-dd', endtime = 'yyyy-
mm-dd', files_path = 'path//to//files')
```

The returned dataframe can be manipulated by the user or processed with the others functions of the package.

You can set a specific directory or just use the default (automatically created when the files are downloaded using `download_data_INTERMAGNET` function).

sv_obs

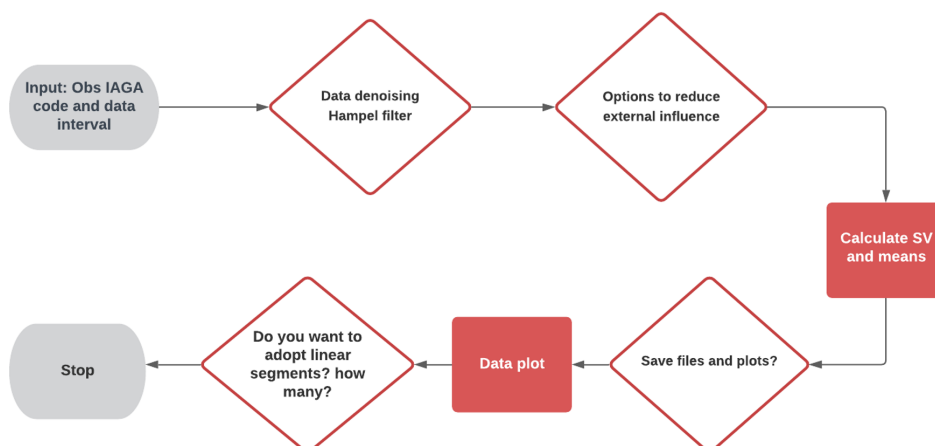
`sv_obs` is a function that includes the most important data processing options.

The processing according to the figure is already implemented in a dedicated function.

However the user can combine any of the processing steps in any possible order or combination

It allows the user to process the geomagnetic data in a interactive workflow,

using most of the available `data_processing` functions.



```
sv_obs(station = 'VSS', starttime = '2000-01-01', endtime = '2021-06-30',
files_path = 'path//to//files', plot_chaos = True)
```

plot_samples

Automatically plot hourly, daily, monthly and annual means for X, Y and Z

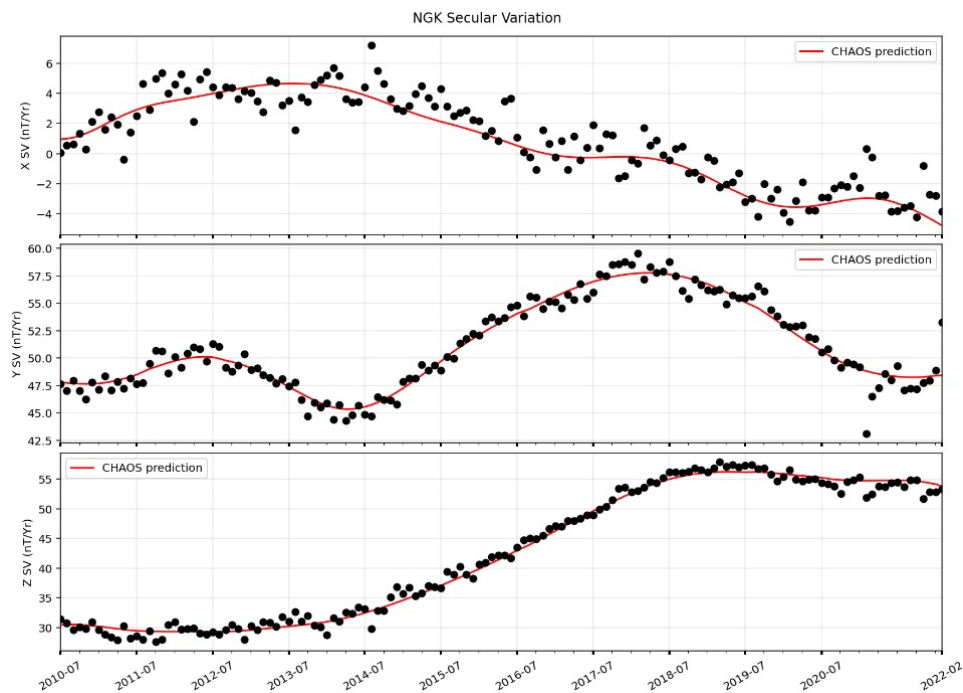
```
import main_functions as mvs
mvs.plot_samples(station = 'VSS', dataframe: df_name, save_plots = False,
plot_data_type = True, apply_percentage = False )
```

plot_sv

Function to automatically plot the SV for an observatory

```
import main_functions as mvs
mvs.plot_sv(station = 'NGK', starttime = None, endtime = None, files_path = None,
df_station = df_name, df_chaos = None, apply_percentage = False, plot_chaos =
True, chaos_correction = True, save_plot = False, convert_hdz_to_xyz = False)
```

Example of SV from NGK automatically created using the function. The CHAOS model internal field predictions is also an option as well as correct the magnetospheric field.

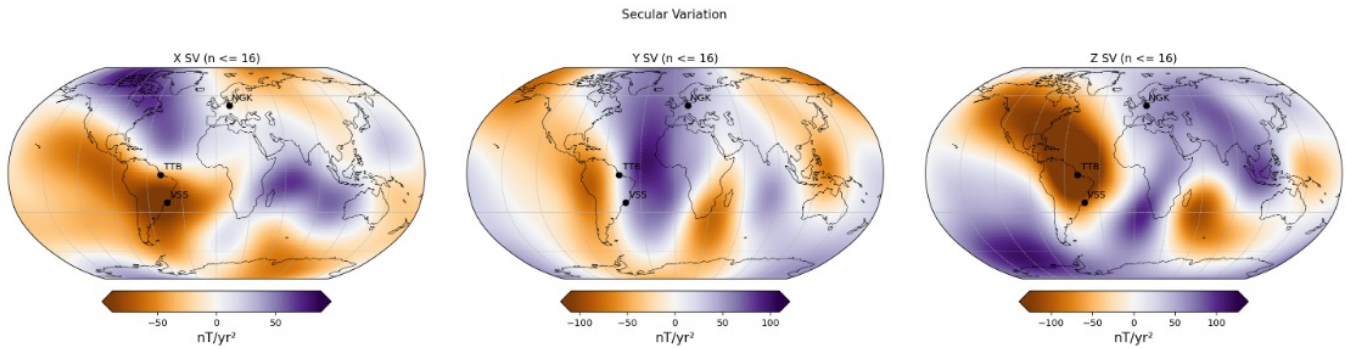


plot_tdep_map

Plot a SV or SA world map for the CHAOS model predictions. It is possible to plot SV and SA changes as well as include 'stations' in the map (see figure)

```
import main_functions as mvs
mvs.plot_tdep_map('2022-07-01', deriv = 1, plot_changes=False, station =
['VSS', 'NGK', 'TTB'])
```

Example of output from plot_tdep_map



data_processing_tools functions usage

Here I explain the principal function of the data_processing_tools module.

As the name says such functions are responsible for the data processing.

Most of them are methods to reduce the external field contribution from the observatory data. In order to investigate the SV.

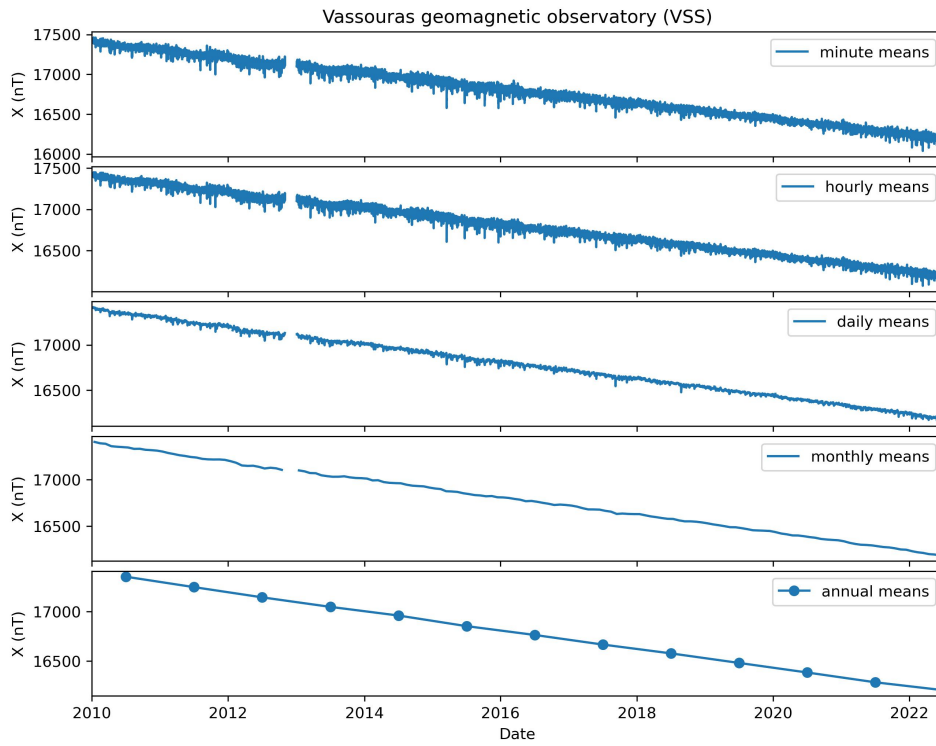
resample_obs_data

This function allows the user to resample geomagnetic observatory

data into different samples (hourly, daily, monthly and annual).

```
import data_processing_tools as dpt
dpt.resample_obs_data(dataframe = df_name, sample = 'H', apply_percentage = True)
```

Example of different data samples calculated using MOSFiT.



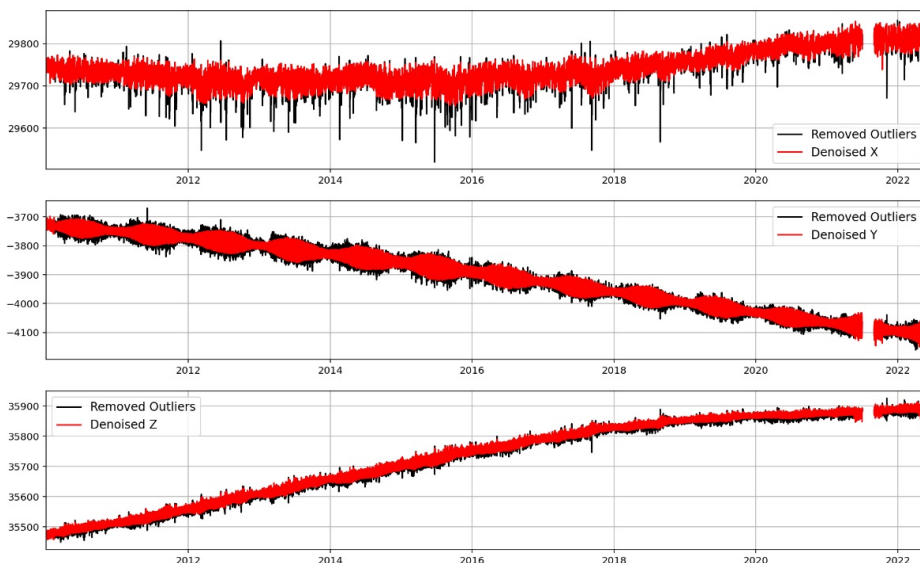
hampel_filter_denoising

This function to denoise geomagnetic data based on a median absolute deviation filter

In order to reduce computational coast the function automatically resample the minute mean data (default from IAGA-2002 data and output from load_intermagnet_files) into hourly mean values

```
import data_processing_tools as dpt
dpt.hampel_filter_denoising(dataframe = df_name, window_size = 200, n_sigmas = 3,
apply_percentage = True, plot_figure = True)
```

Example of denoised hourly mean data.



kp_index_correction

The function removes periods with Kp index values above user input limit from the geomagnetic components

Find the Kp index on <https://kp.gfz-potsdam.de/en/>

```
import data_processing_tools as dpt
dpt.kp_index_correction(dataframe = df_name, kp = 2)
```



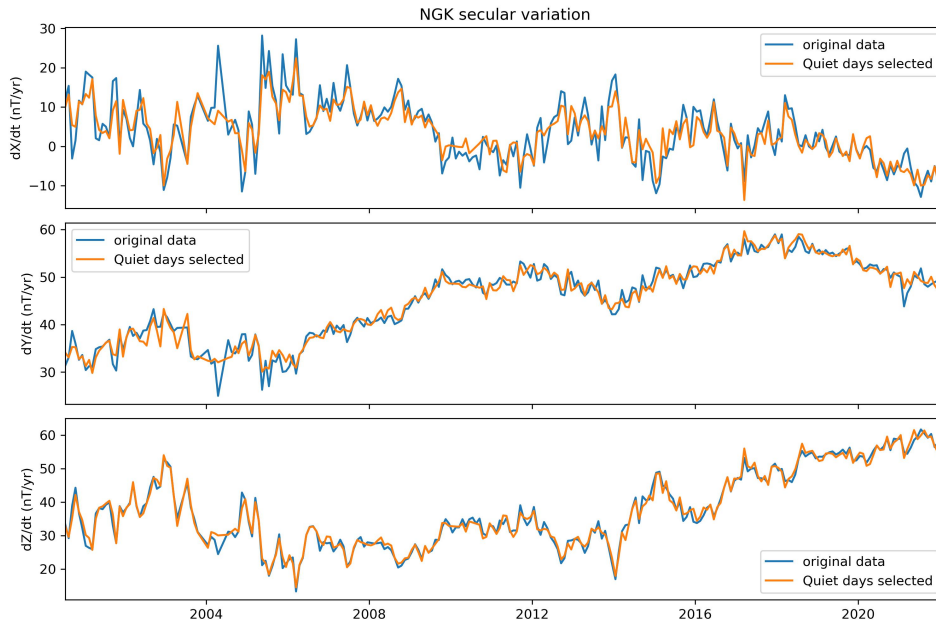
keep_quiet_days

The function select only the top 10 international quiet days from each month

Find the list of quiet days for each month on <https://kp.gfz-potsdam.de/en/>

```
import data_processing_tools as dpt
dpt.keep_quiet_days(dataframe = df_name)
```

Example of SV calculate using normal data and selecting quiet days for each monthly.



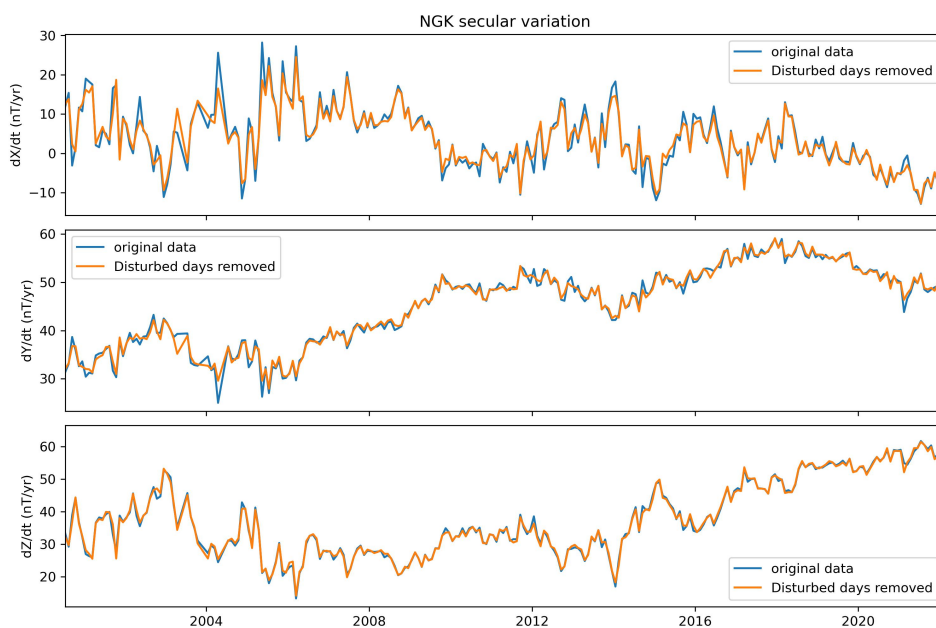
remove_disturbed_days

The function remove the top 5 international disturbed days from each month

Find the list of disturbed days for each month on <https://kp.gfz-potsdam.de/en/>

```
import data_processing_tools as dpt
dpt.remove_disturbed_days(dataframe = df_name)
```

Example of SV calculate using normal data and removing the top 5 disturbed days from each month.

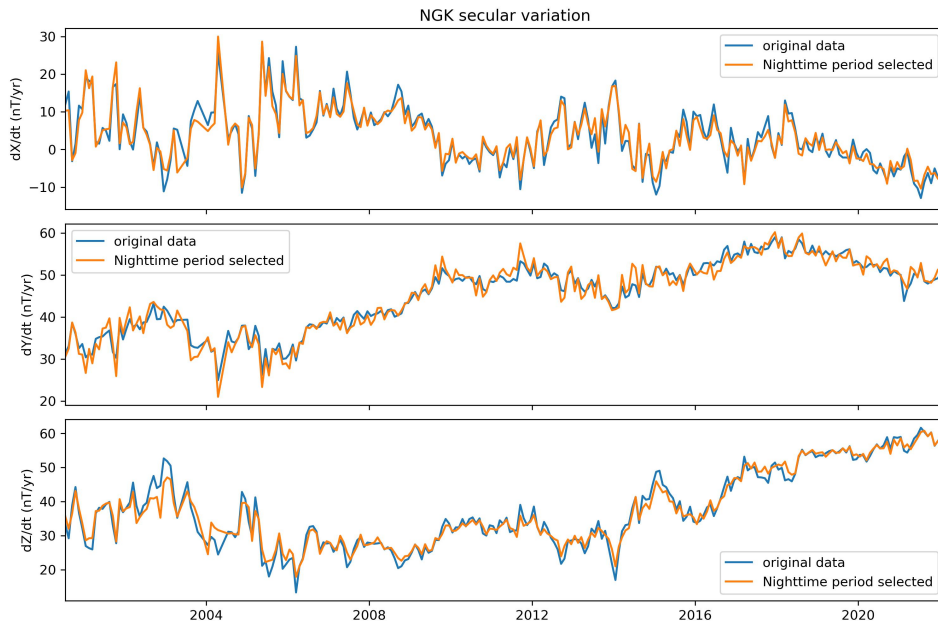


night_time_selection

The function select the nighttime period from the geomagnetic data (default from 22pm to 2 am LT)

```
import data_processing_tools as dpt
dpt.night_time_selection(station = 'XXX', dataframe = df_name)
```

Example of SV calculate using normal data and selecting only nighttime period.

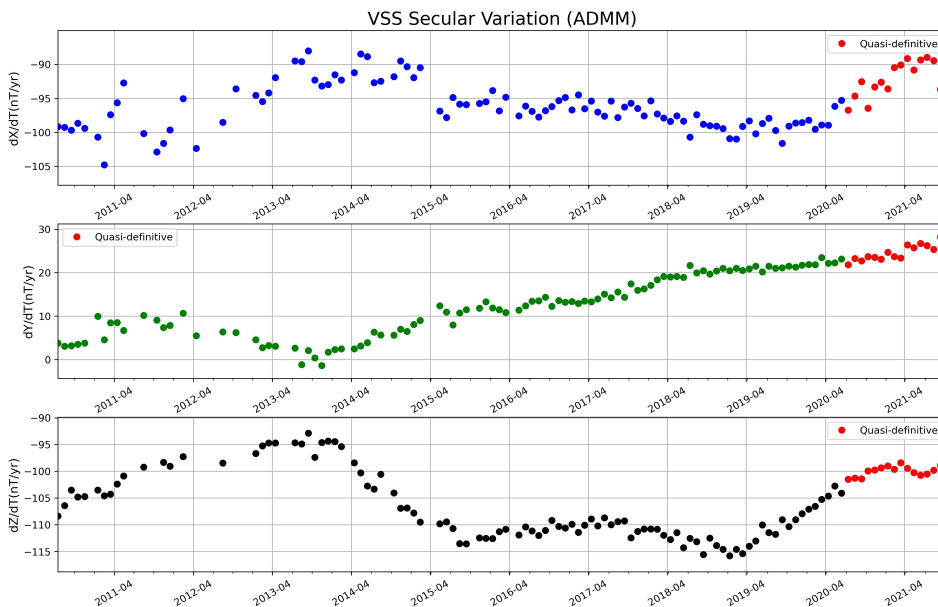


calculate_sv

Calculate geomagnetic secular variation using monthly means or annual means

```
import data_processing_tools as dpt
dpt.calculate_sv(dataframe = df_name, method = 'ADMM')
```

Example of SV calculate from VSS monthly means using MOSFiT.



chaos_model_prediction

Predict core field, crustal field and magnetospheric field (GSM and SM) from CHAOS-7 model predictions in a hourly rate

find the model release on <http://www.spacecenter.dk/files/magnetic-models/CHAOS-7/>

References Finlay, C.C., Kloss, C., Olsen, N., Hammer, M. Toeffner-Clausen, L., Grayver, A and Kuvshinov, A. (2020), The CHAOS-7 geomagnetic field model and observed changes in the South Atlantic Anomaly, Earth Planets and Space 72, doi:10.1186/s40623-020-01252-9 [.pdf]

Finlay, C.C., Kloss, C., Olsen, N., Hammer, M. and Toeffner-Clausen, L., (2019) DTU Candidate models for IGRF-13. Technical Note submitted to IGRF-13 task force, 1st October 2019 [.pdf]

Example of how to use MOSFiT `chaos_model_prediction`. The station (3 letter IAGA code) must be in the MOSFiT imos database. All INTERMAGNET observatories are included in the database automatically. If you are interest in predict the field for other observatory or location, use the 'IMO' MOSFiT class to add the location in the database. See `utilities_tools` section for an explanation about how to include the location.

```
import data_processing_tools as dpt
dpt.chaos_model_prediction(station = 'XXX', starttime = 'yyyy-mm-dd', endtime =
'yyyy-mm-dd', n_core = 20, n_crust = 110, n_gsm = 2, n_sm = 2)
```

external_field_correction_chaos_model

Subtract the magnetospheric field (GSM and SM) from CHAOS-7 model predictions from the observatory data

find the model release on <http://www.spacecenter.dk/files/magnetic-models/CHAOS-7/>

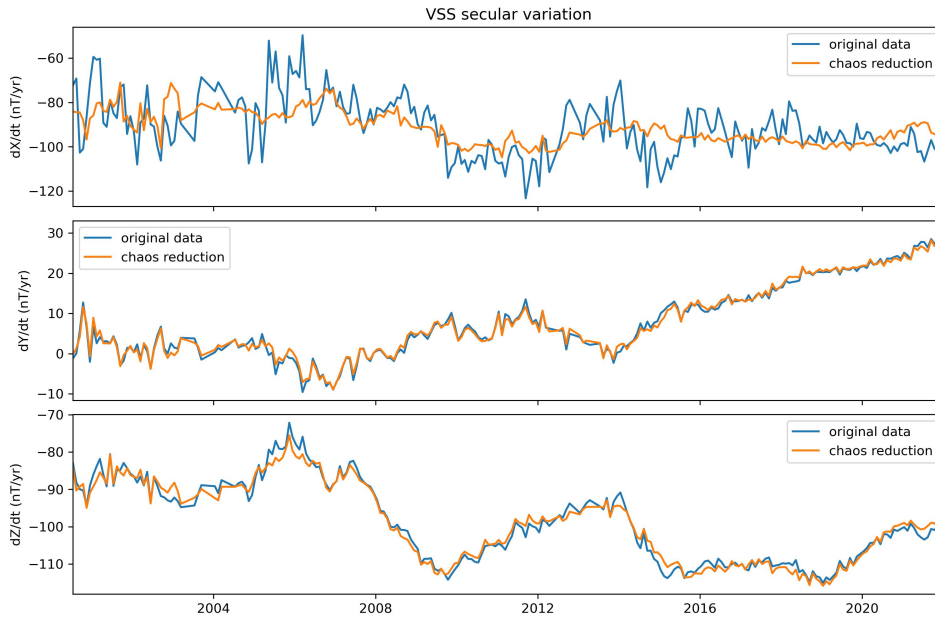
References Finlay, C.C., Kloss, C., Olsen, N., Hammer, M. Toeffner-Clausen, L., Grayver, A and Kuvshinov, A. (2020), The CHAOS-7 geomagnetic field model and observed changes in the South Atlantic Anomaly, Earth Planets and Space 72, doi:10.1186/s40623-020-01252-9 [.pdf]

Finlay, C.C., Kloss, C., Olsen, N., Hammer, M. and Toeffner-Clausen, L., (2019) DTU Candidate models for IGRF-13. Technical Note submitted to IGRF-13 task force, 1st October 2019 [.pdf]

Example of how to use MOSFiT `external_field_correction_chaos_model`.

```
import data_processing_tools as dpt
dpt.external_field_correction_chaos_model(station = 'XXX', starttime = 'yyyy-mm-
dd', endtime = 'yyyy-mm-dd', df_station = None, df_chaos = None, n_core = 20,
n_crust = 110, n_gsm = 2, n_sm = 2)
```

Example of SV calculate from VSS monthly means using MOSFiT magnetospheric field correction from CHAOS predictions.



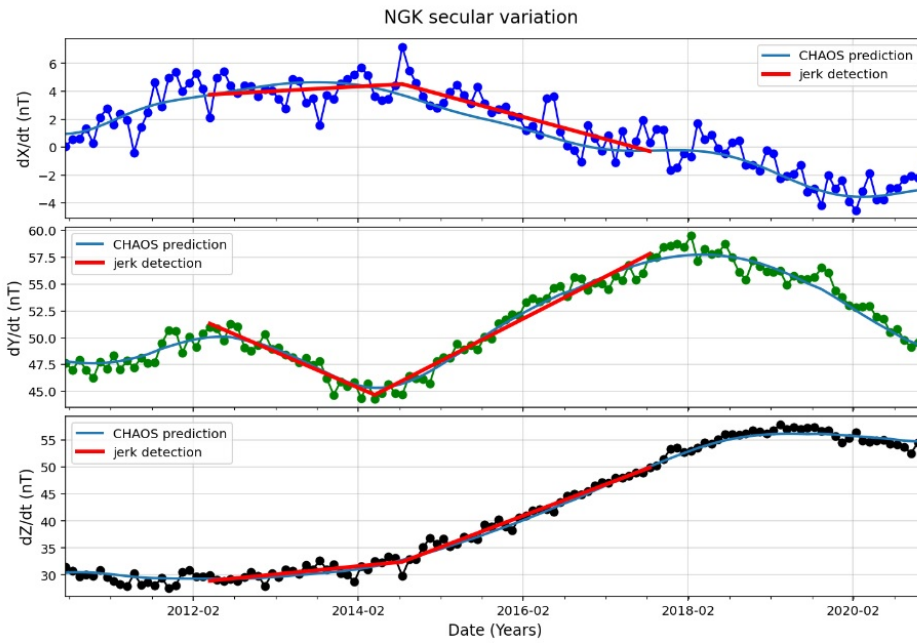
jerk_detection_window

Automatically fits two straight line segments for an user selected window. Determine the geomagnetic jerk occurrence time (t_0), amplitude (A) and coefficient of determination (R^2).

The function uses the occurrence time as input in the [plot_tdep_map](#) to plot the SA changes for the jerk detection.

```
import data_processing_tools as dpt
dpt.jerk_detection_window(station = 'NGK', window_start = '2012-04', window_end =
'2017-08', starttime = '2010-01-01', endtime = '2021-06-30', df_station = None,
df_chaos = None, files_path = None, plot_detection = True, chaos_correction =
True, plot_chaos_prediction = False, convert_hdz_to_xyz = False, save_plots =
False)
```

Geomagnetic jerk detection



Statistics

NGK Jerk statistics for the X component.

Jerk occurrence time $-t_0$: 2014.62
 Jerk amplitude: -1.93
 R^2 : 0.68

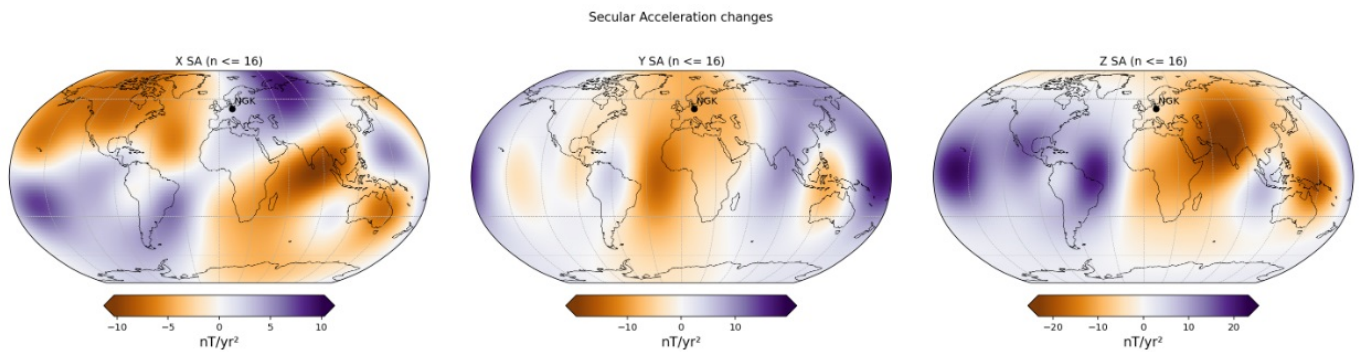
NGK Jerk statistics for the Y component.

Jerk occurrence time $-t_0$: 2014.28
 Jerk amplitude: 7.26
 R^2 : 0.95

NGK Jerk statistics for the Z component.

Jerk occurrence time $-t_0$: 2014.62
 Jerk amplitude: 4.32
 R^2 : 0.98

Secular acceleration changes for the jerk occurrence time



utilities_tools usage

Here I describe some functions that let easier the use of the package.

IMO

Class used to check the IMOs database, IMO coordinates and to delete or add a new IMO in the database.

Very useful if you want to add a specific location in the world, station or observatory. Adding the location you can use all package features if your data format is IAGA-2002.

Checking existent database

```
import utilities_tools as utt
utt.IMO.database()
```

	Latitude	Longitude	Elevation
Imos			
AAA	43.250	76.920	1300.0
ABG	18.638	72.872	6.0
ABK	68.358	18.823	380.0
AIA	-65.245	-64.258	10.0
API	-13.815	-171.781	2.0
...
TAN	-18.917	47.552	1375.0
TEO	19.747	-99.182	2280.0
TIK	71.580	129.000	57.0

The coordinates can be checked by:

```
import utilities_tools as utt
utt.IMO.latitude('VSS')
utt.IMO.longitude('VSS')
utt.IMO.elevation('VSS')
```

Adding a new IMO

```
import utilities_tools as utt
utt.IMO.add('XXX', 123, 123, 123)
```

Deleting an IMO

```
import utilities_tools as utt
utt.IMO.delete('XXX')
```


Checking the existince of an especific IMO on the database

```
import utilities_tools as utt
utt.IMO.check_existence('XXX')
```

hdz_to_xyz_conversion

Sometimes quasi-definitive IAGA-2002 data are submitted containing HDZ components (also some data in the past). This Function search for periods with HDZ components reported and convert to XYZ.

Checking the existince of an especific IMO on the database

```
import utilities_tools as utt
utt.hdz_to_xyz_conversion('XXX', dataframe = df_name, files_path =
'path//to//files')
```