

Supplement of Geosci. Instrum. Method. Data Syst., 6, 93–101, 2017  
<http://www.geosci-instrum-method-data-syst.net/6/93/2017/>  
doi:10.5194/gi-6-93-2017-supplement  
© Author(s) 2017. CC Attribution 3.0 License.



Geoscientific  
Instrumentation  
Methods and  
Data Systems

Open Access

The EGU logo features the letters 'EGU' in a bold, sans-serif font, enclosed within a circular gear-like border.

*Supplement of*

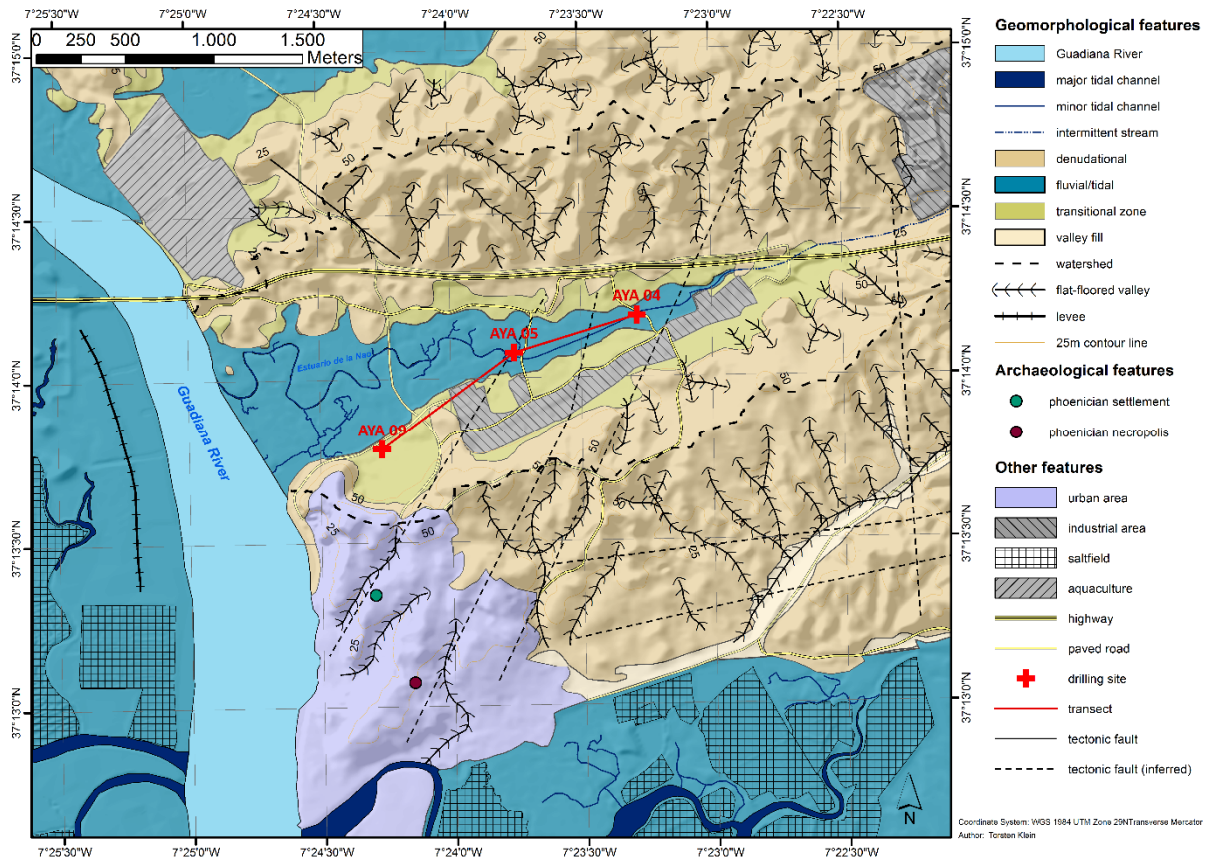
## **A new device to mount portable energy-dispersive X-ray fluorescence spectrometers (p-ED-XRF) for semi-continuous analyses of split (sediment) cores and solid samples**

**Philipp Hoelzmann et al.**

*Correspondence to:* Philipp Hoelzmann ([philipp.hoelzmann@fu-berlin.de](mailto:philipp.hoelzmann@fu-berlin.de))

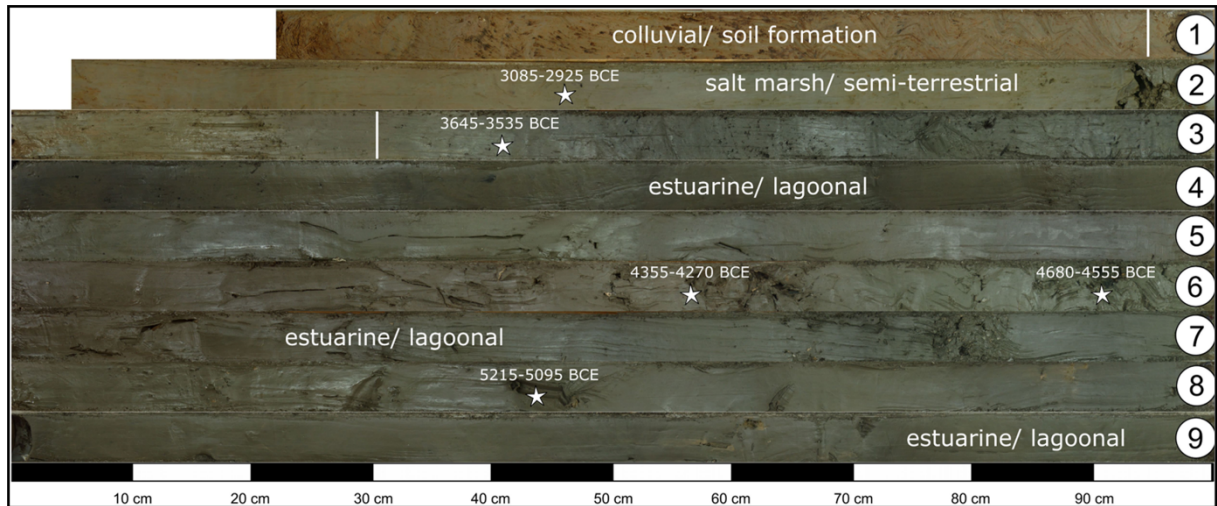
The copyright of individual parts of the supplement might differ from the CC-BY 3.0 licence.

Supplementary Data



**Figure S1.** Geomorphological map of the Estero de la Nao and its environs including archaeological features and drilling sites (after Klein et al., 2016).

## Supplementary Data



**Figure S2.** Simplified facies profile and radiocarbon dates of core AYA05 showing estuarine lagoonal deposits overlain by salt marsh-terrestrial sediments superposed by colluvial and soil formation layers (after Klein et al. 2016).

5