



## Abstract

This work presents the outline and so far completed design of the Aalto-1 science mission. Aalto-1 is a multi-payload remote sensing nanosatellite, built almost entirely by students. The satellite aims for a 500–900 km sun-synchronous orbit, and includes an accurate attitude dynamics and control unit, a UHF/VHF housekeeping and S-band data links, and a GPS unit for positioning (radio positioning and NORAD TLE's are planned to be used as backups). It has three specific payloads: a spectral imager based on piezo-actuated Fabry–Perot interferometry, designed and built by The Technical Research Center of Finland (VTT); a miniaturized radiation monitor (RADMON) jointly designed and built by Universities of Helsinki and Turku ; and an electrostatic plasma brake designed and built by the Finnish Meteorological Institute (FMI), derived from the concept of the e-sail, also originating from FMI. Two phases are important for the payloads, the technology demonstration and the science phase. Emphasis is placed on technological demonstration of the spectral imager and RADMON, and suitable targets have already been chosen to be completed during that phase, while the plasma brake will start operation in the latter part of the science phase. The technology demonstration will be over in relatively short time, while the science phase is planned to last two years. The science phase is divided into two smaller phases: the science observations phase, during which only the spectral imager and RADMON will be operated for 6–12 months, and the plasma brake demonstration phase, which is dedicated to the plasma brake experiment for at least a year. These smaller phases are necessary due to the drastically different power, communication and attitude requirements of the payloads. The spectral imager will be by far the most demanding instrument on board, as it requires most of the downlink bandwidth, has a high peak power and attitude performance. It will acquire images in a series up to at least 20 spectral bands within the 500–900 nm spectral range, forming the desired spectral data cube product. Shortly before an image is acquired, the parallel visual spectrum camera will take a broader picture for comparison. Also stereoscopic imaging is planned. The amount of

### Aalto-1 nanosatellite – technical description and mission objectives

A. Kestilä et al.

Title Page

Abstract

Introduction

Conclusions

References

Tables

Figures



Back

Close

Full Screen / Esc

Printer-friendly Version

Interactive Discussion



data collected by the spectral imager is adjustable, and ranges anywhere from 10 to 500 MB. The RADMON will be on 80 % of an orbit period in average and together with housekeeping data will gather around 2 MB of data in 24 h. An operational limitation is formed due to the S-band downlink capability of 29–49 MB per 24 h for a 500 900 km orbit altitude, as only one ground station is planned to be available to the satellite. This will limit both type and quantity of spectral imager images taken during the science phase. The plasma brake will in turn be on within an angle of 20° over the poles for efficient use of the Earth’s magnetic field and ionosphere during its spin-up and operation.

## 1 Introduction

Aalto-1 is a student nanosatellite with three specific payloads that aim for tests proving their capabilities in an actual space application. The satellite itself and its mission have been designed particularly keeping in mind the aims and needs of the payloads, nevertheless conforming as much as possible to the CubeSat-specifications and the learned practices of the CubeSat community. The CubeSat-specifications (CDS, 2012) themselves are a set of guidelines jointly developed by California Polytechnic State University and Stanford University, which enable the standardization of the satellite bus, mechanical and launch properties. The first part of the actual mission of the satellite consists of remote sensing using a spectral imager as well as orbital science observations with a radiation monitor, while during the latter part an experiment on determining the drag force created by an electrostatic plasma brake will be performed.

While the goal of this student project is gathering experience and so most of the satellite’s subsystems will be built in-house by students, nevertheless thanks to conformity with specifications, many of the needed subsystem can and will be bought as COTS from external manufacturers. This work presents the mission in its entirety, as well as in more detail the technology demonstration and scientific phases of the mission. The Aalto-1 nanosatellite will perform a complicated mission both in terms its

### Aalto-1 nanosatellite – technical description and mission objectives

A. Kestilä et al.

Title Page

Abstract

Introduction

Conclusions

References

Tables

Figures



Back

Close

Full Screen / Esc

Printer-friendly Version

Interactive Discussion



technological and scientific goals, and the mission technical requirements derived from them. As such it demands well performing subsystems to track, handle attitude demands, process and downlink in one seamless whole to succeed in attaining these goals. A dynamic attitude handling will especially be required, as the mission is divided into two clear cut phases, and needs to be accurate as well as flexible.

## 2 Technical overview of Aalto-1

Aalto-1 is a 3 U nanosatellite, and conforms to the CubeSat-specifications (see Fig. 1). The satellite has a mass of 4 kg, and external dimensions of 10 × 10 × 34 cm, designed to fit into a Poly-PicoSatellite Orbital Deployer (P-POD).

The mechanical structure of the satellite consists of two subsystem PCB fastener stacks, conjoined specially designed stack plates to both each other and the main outer frame. The outer frame itself consists of two separate aluminium parts, both 1.5 mm thick, fastened together into one tubelike structure.

The satellite orbit is not yet finalized, as a contract with the launcher has not been signed. During launch the satellite will be sealed within the special, CubeSat-specification conforming deployment pod. This pod is designed to protect (the satellite within as well as the launcher and surrounding satellites) and when the time is correct, deploy the satellite to its correct orbit. The ideal orbit is a sun-synchronous “midday–midnight” orbit, with an orbit altitude of 500–900 km. The orbit can have a 10:30–13:30 o’clock (mean local time) variation, with an otherwise as standard configuration as possible in order to find a suitable launch easier. Once the satellite is deployed out of its CubeSat-deployer, it will remain in the same orbit throughout the first part of its science mission. During the latter part however, as the plasma brake experiment is active, its orbit altitude and so other parameters as well will change thanks to the drag force caused by the tether. Due to the uncertainty in the final orbit, the various effects of the orbit parameters, such as power production and thermal environment, have been designed with a 20 % margin, and so the mission can continue in a sun-synchronous orbit

### Aalto-1 nanosatellite – technical description and mission objectives

A. Kestilä et al.

Title Page

Abstract

Introduction

Conclusions

References

Tables

Figures

⏪

⏩

◀

▶

Back

Close

Full Screen / Esc

Printer-friendly Version

Interactive Discussion



## Aalto-1 nanosatellite – technical description and mission objectives

A. Kestilä et al.

[Title Page](#)

[Abstract](#)

[Introduction](#)

[Conclusions](#)

[References](#)

[Tables](#)

[Figures](#)



[Back](#)

[Close](#)

[Full Screen / Esc](#)

[Printer-friendly Version](#)

[Interactive Discussion](#)



with a significantly differing beta angle. The satellite will be covered with solar cells on almost all available surfaces, forming three long-side solar panels, and one smaller on the nadir side (during the remote sensing phase of the mission). These panels produce roughly an average power of 4.5 W for an ideal 500 km orbit in the entirety of the mission, with a battery as part of the electrical power system to store the collected energy for the eclipse period in the orbit.

The satellite will have three radio channels in use, of which VHF/UHF will be used for up/downlinking telemetry, tracking and commands, and S-band will be only transmitting data down to the ground segment. Depending on the orbit altitude, the S-band will be able to downlink 29 to 49 MB per 24 h, while VHF/UHF can uplink 0.07 to 0.12 MB per 24 h (with an 1200 bps uplink) and downlink 0.57 to 0.96 MB per 24 h (downlink 9600 bps), and can work as a limited backup for the S-band.

The onboard computer (OBC) is designed in-house, and will employ a Linux real-time operating system with a double-redundant design (two computers on one PCB-board) and necessary flash memory needed for storing extensive spectrometer payload imagery.

The satellite will have an attitude dynamics and control system (ADCS), designed and built by an external manufacturer Berlin Space Technologies. The iADCS –100 is a semi-autonomous ADCS will have attitude knowledge and pointing accuracy of less than a degree during the science observation phase and less than 10° during plasma brake operation, with several operation modes for the entirety of the mission, with only rough positional information required. The system will consist of magnetorquers, MEMS gyros, miniature reaction wheels, sun sensors, and a star tracker for accurate attitude knowledge. It will fit into a less than half a CubeSat-cube space and have several operational modes, with the only external requirement being positional knowledge every few days.

During the mode requiring high accuracy attitude knowledge, the star tracker will be the primary source of knowledge, with the reaction wheels enabling precise pointing, while the magnetorquers providing the “raw” and less precise pointing. The latter phase

of the mission, during which only the plasma brake will be operated, will use only the magnetorquers, MEMS gyros and the sun sensors for attitude purposes.

For gathering positional knowledge, an IT03 GPS receiver by Fastrax will be employed primarily, with a backup of radio positioning using ranging and Doppler distortion, as well as NORAD supplied TLE's. The GPS will be operated relatively rarely, and will be operational either just before the spectral imager takes an image, and later during the plasma brake experiment, once per orbit. This is mainly to conserve the satellite's power budget, as the precise orbit position is not necessary except when determining through the satellite's position during imaging by post-processing the GPS data. Later, the altitude change due to the use of the plasma brake is expected to be low enough for once – per orbit determination to be enough, thus saving power and downlink budget. By default in all cases, the GPS will be cold-started each time, taking a few minutes for total time of first fix (based on tests performed on it), after which 60 fixes will be acquired (one fix per second).

The satellite will have to operate in a heavy radiation and thermal environment for a long time period, necessitating stringent test campaigns on all of its onboard subsystems, performed according to ECSS standards.

The main planned test campaigns planned are:

- Thermal cycling on all subsystems indicated to experience critical temperature variations by thermal analysis.
- As the satellite will have lenses, vacuum degassing and testing on all materials with a risk of outgassing will be performed.
- Radiation testing on radiation sensitive subsystems, such as the OBC, will be performed to make sure the system will have the intended lifetime.
- Extensive qualification thermal vacuum tests on the whole satellite system during verification.

**Aalto-1 nanosatellite  
– technical  
description and  
mission objectives**

A. Kestilä et al.

Title Page

Abstract

Introduction

Conclusions

References

Tables

Figures



Back

Close

Full Screen / Esc

Printer-friendly Version

Interactive Discussion









## Aalto-1 nanosatellite – technical description and mission objectives

A. Kestilä et al.

Title Page

Abstract

Introduction

Conclusions

References

Tables

Figures

⏪

⏩

◀

▶

Back

Close

Full Screen / Esc

Printer-friendly Version

Interactive Discussion

energy range. The differential energy from the detector and scintillator channels with  $\Delta E/E \sim 50\%$  ( $\sim 5$  channels per decade), mainly to allow comparison with other instruments on selected energy bands. With a nominal 15 s time resolution (corresponding to  $1^\circ$  in latitude on a 90-min orbit period), integral fluxes down to  $1 \text{ cm sr}^{-1} \text{ s}^{-1}$  should be detectable, while its dynamic range goes up to  $10^5 \text{ cm}^2 \text{ sr}^{-1} \text{ s}^{-1}$ . As seen in Fig. 3b, the telescope consists of a detector unit (the brown box in front), the analogue board responsible for amplifying the detector unit signals and digitizing them, digital board with an FPGA for signal processing and conversion in final format, and finally the power supply unit.

RADMON will have UART as its primary data and command channel to the OBC, with I2C working as backup, which is sufficient for the estimated total data of 1 MB per 24 h of operation.

As with in the case of the imager, the primary goal of RADMON is demonstrating that the instrument technology will survive the launch and subsequent space conditions. Once that is achieved, RADMON will proceed with its aimed scientific goals (see Sect. 4.1).

### 3.3 Electrostatic plasma brake

The third satellite payload, the electrostatic plasma brake, designed and built by the Finnish Meteorological Institute, is based on the so-called e-sail concept, developed to enable fast and cheap interplanetary travel (Janhunen et al., 2010). The main purpose of the plasma brake is to demonstrate the physical concept behind this e-sail concept, as it so far remains unproven. The tether intends to create a Coulomb drag force and so eventually, during its phase of the mission, change the satellite's orbital velocity and thus altitude. As the aim is to prove that the concept works, the orbit parameters need to be determined only roughly, with planned use of GPS once per orbit during the plasma brake experiment.

The plasma brake consists of a long, positively or negatively charged tether and support subsystems (Janhunen et al., 2010), and the tether reacts with the incoming

ionosphere in orbit, creating a Coulomb drag force as charged particles collide with it (see Fig. 4a), as the spacecraft is moving with respect to the ionosphere.

Once the plasma brake mission phase begins, the tether will be reeled out with a speed of  $1\text{--}3\text{ mm s}^{-1}$ , and will have a weight of 0.5 to 1 g at its tip to facilitate a smoother reel-out. The satellite at this point will be spun up to assist during the deployment process.

The tether itself will be 100 m long and 25–50 micrometers wide, consisting of several smaller aluminium strands interwoven such that the risk of the tether snapping is minimized (see Fig. 4b). Two operating modes are possible, depending on whether the tether is positively or negatively charged, with the former mode requiring a special electron gun, currently being developed in the University of Jyväskylä. The electron gun is intended to neutralize the positively charged plasma brake and thus close the circuit with respect to the surrounding plasma of the ionosphere.

The plasma brake consists of three specific PCB boards: the control electronics board housing an FPGA which interfaces via I2C to the onboard computer, with the data gathered from the plasma brake being small in comparison to the other payloads, less than 10 KB per 24 h of operation; a board for the tether and its reeling motor; and a third for housing the electron guns and necessary electronics, as well as some auxiliary electronics for the solar panels.

## 4 Aalto-1 critical mission phases

### 4.1 Technology demonstration and science observations phase

As seen in Fig. 5, before starting the science phase in which the payloads will perform their targeted science observations, the satellite will go through the commissioning phase. During this phase, the satellite will be first booted up, contact made with the ground segment and pointed correctly towards nadir. After this has been achieved, spectral imager and RADMON technology operation will be demonstrated by taking

## Aalto-1 nanosatellite – technical description and mission objectives

A. Kestilä et al.

Title Page

Abstract

Introduction

Conclusions

References

Tables

Figures



Back

Close

Full Screen / Esc

Printer-friendly Version

Interactive Discussion



6 minimum quality spectral images and one VIS-camera image, as well as operating the RADMON within the South Atlantic Anomaly (SAA) for altogether three days. This data will be sent down through the s-band downlink, and will serve at the same time as a way to test it as well.

5 The technology demonstration phase has no time limit. Once the technology demonstration goals have been met and in general the commissioning phase has gone according to plan, the science phase can begin. This phase is divided into two particular phases, as seen in Fig. 5, the first of which will consist of science observations performed with the spectral image and the RADMON, and the latter for operating the  
10 plasma brake. This division of the science phase is due to the drastically different attitude, data rate and power requirements of the different payloads. The science observations phase will last 6–12 months, depending on the satellite and payloads performance.

15 While performing the first part of the science phase, the satellite will assume either a nadir pointing or target tracking attitude with a velocity vector as seen in Fig. 1, and operate the spectral imager and the RADMON.

Both the spectral imager as well as the RADMON during this time will rely exclusively on the s-band downlink for transferring their collected data to the ground segment, and so are limited by how much it can possibly downlink during this time, especially the  
20 spectral imager. A preliminary estimate gives 29–49 MB per 24 h for the s-band for an orbit altitude of 500–900 km.

25 An average image size expected to be taken by the spectral imager is estimated to be around 7.8 MB (512 × 512 pixels with 15 channels and 16 bits), which is for a minimum of 6 months science observations phase means being able to downlink around 623–1084 average images, depending again on the satellite orbit altitude. Thus the spectral imager will take images several times per 24 h, with a typical dynamical power usage profile as shown in Fig. 6 of a few minutes duration.

During this, the RADMON will be on 80% of the satellite's orbit period, switched off only during communication and spectral imager usage. It will have a constant

## Aalto-1 nanosatellite – technical description and mission objectives

A. Kestilä et al.

Title Page

Abstract

Introduction

Conclusions

References

Tables

Figures



Back

Close

Full Screen / Esc

Printer-friendly Version

Interactive Discussion



perpendicular angle with respect to the nadir and the satellite's velocity vector, and will gather a steady average of around 2 MB per 24 h when it is on, with main targets of interest for both proton and electrons being the planet's high latitudes and the SAA, as seen in Fig. 7.

5 The primary imaging targets are in Finland, both due to accessibility as well as good reference data availability. After the spectral imager technology has been demonstrated, VTT expects at least one datacube time-series to be imaged during the June–August growing season for the science observations phase. In addition, a “dark” image from the night side of the planet and another one from near the noon-equator will be  
10 taken to assess the minimum and maximum lighting performance of the imager.

Due to the uncertainty with the launch of the satellite and possible science observations phase duration of a whole year, separate targets have been chosen for the June–August growing season and for the winter season.

15 These targets leave plenty of data bandwidth unused; once both the technology demonstration targets and the above mentioned targets for the spectral imager have been met, a comprehensive campaign can be performed and is currently being planned.

Also a stereoscopic imaging campaign composed of several suitable targets around the planet is being planned.

## 20 4.2 Electrostatic plasma brake demonstration

The plasma brake will be operated separately in the second part of the science phase, the plasma brake demonstration phase. During this phase, the spectral imager will not be used due to drastically different satellite attitude parameters compared to the science observations phase, while the RADMON will be used sporadically and depending  
25 on the system power demands at that moment.

The experiment itself has the goal to demonstrate the technology behind the tether and how well it interacts with the LEO ionosphere around the planet. When moving with respect to the plasma of the ionosphere, it will create a Coulomb drag force due to the

### Aalto-1 nanosatellite – technical description and mission objectives

A. Kestilä et al.

Title Page

Abstract

Introduction

Conclusions

References

Tables

Figures



Back

Close

Full Screen / Esc

Printer-friendly Version

Interactive Discussion



charged particles bouncing into the equivalently charged tether, with the resulting force vector along the ionosphere velocity vector (see Fig. 4a). As the drag is exerted on the tether and so the rest of the satellite, it will discernibly change its orbit parameters by slowing it down. With regular position and velocity determination, such as GPS, the drag effect created by the ionosphere thus can be measured over the period of this last phase, and so the experiment performed.

Both positive and negative tether charging modes will be tested during this phase, as described in Table 1, and the negative mode requires only a voltage source and the tether itself, while the positive mode will need additionally 1–3 electron guns to achieve the necessary charge levels in the tether; the tether in this mode gathers electrons from the plasma and shoots them out using the electron gun.

The major change of attitude dynamics in this part of the mission is due to the significantly different attitude requirements of the operational plasma brake tether. The satellite will be spun up to 200° per second rotation around its own y-axis (see Fig. 1a) for keeping the tether taut during deployment, and the resulting rotation vector needs to be parallel to Earth's rotation vector, as shown in Fig. 8a. This is done to maximize the charged tether's interaction with the ionosphere, specifically in terms of relative velocity. For the same reason the tether will be charged and operational only during a 20° total angle on top of the poles (see Fig. 8b). Similarly, for maximizing the efficient use of Earth's magnetic during the satellite's spin up, as well as to conserve the power budget, the satellite will be spun up only during the same angle on top of the poles.

The initial tether deployment length is 10 m, and the results of the both positive and negative charged tether drag will be compared to the results of the cubesat EstCube-1, which has an almost identical mission and tether (but only 10 m long), and will be launched during 2013. The experiment will be performed with this initial length for roughly a month. After this, the satellite will be spun up again to 200° per second and subsequently extended to its full length of 100 m. This part of the plasma brake demonstration phase is scheduled to last up to a year in order to verify with certainty the effect, area and magnitude of the Coulomb drag force experienced by the charged

**Aalto-1 nanosatellite  
– technical  
description and  
mission objectives**

A. Kestilä et al.

Title Page	
Abstract	Introduction
Conclusions	References
Tables	Figures
⏪	⏩
◀	▶
Back	Close
Full Screen / Esc	
Printer-friendly Version	
Interactive Discussion	



tether. The tether will however be only negatively charged this time in order to not have to use the electron guns.

Once the phase and the mission has been completed, there is the option of continuing to slow down the satellite with the tether for enough time for it drop altitude sufficiently and re-enter the atmosphere. This, however, depends on the initial orbit the launcher brings the satellite to, as well as how the mission itself works out and so is not a strictly mandatory goal. The radiation monitor will still be sporadically active during the demonstration, even though the satellite's rotation rate is very different in comparison to the science observations phase. It will see a 360° view of the same orbit height as in the previous part of the science phase, with a comparatively sparser directional sampling rate. However, as the monitor's primary mission objective is by now complete, this will give additional, pseudo-3-D data on the LEO radiation environment.

It is expected that the data rate per 24 hours during this part of the science phase is no more than 10 Kbytes, with another 27.3 kbytes (with a sampling period of roughly 1 minute; this data amount includes the once per orbit GPS positioning for the same period) for housekeeping data via the UHF/VHF radios during the same period. As such, this means a drastically smaller required downlinking data rate, and as the new attitude rotation parameters effectively preclude the use of the S - band downlink, the UHF/VHF channels will be the main and only communication channels during the plasma brake demonstration.

### 4.3 Expected positional and attitude errors influence on payload data

The most sensitive payload to errors is the spectral imager. In turn, RADMON and the plasma brake are relatively insensitive, requiring attitude pointing of less than 10°, and attitude knowledge of one degree for RADMON and less than 10° for the plasma brake. A positional accuracy of 10 km will be enough for both.

Table 2 summarizes the largest error sources affecting the image itself (worst-case, without any post-processing assumed yet), with and without a GPS receiver. Due the varied nature of the reason for them, these errors will manifest as distortions and

## Aalto-1 nanosatellite – technical description and mission objectives

A. Kestilä et al.

Title Page

Abstract

Introduction

Conclusions

References

Tables

Figures



Back

Close

Full Screen / Esc

Printer-friendly Version

Interactive Discussion



cut-offs of the image edges and so considering the image swath width is 120 km both along and cross-track, will affect altogether  $\sim 0.8$  km ( $2 \times 0.4$  for opposite edges) the quality of the image in both track directions in the case GPS is used, while without GPS will be several kilometres possibly necessitating the auxiliary geometric correction using ground points. In both cases, however, attitude and position subsystems are sufficient, and image degradation will be within payload requirements.

#### 4.4 Downlinking limitations influencing mission character

The most dominating bottleneck on how the mission looks like is the downlinking bandwidth. The fact that UHF/VHF and s-band frequencies have been selected and only one ground station will be primarily available not only limits how much data can be sent down, but the opportunities for it as well. As the most interesting spectral imager mission targets will be in Finland (or close by), both communication with the ground station and imaging will have to be performed at the same time, causing relatively large peak power consumption. This will be demanding on the power budget of the satellite, and will so instead require prioritization, either performing imaging on the spectral imager targets within the coverage area of the ground station or downlink communication. In practice this means the required targets in the ground station coverage area should be imaged by imaging targets up to the maximum downlinking capability per 24 h and subsequently downlinking the image data, while for the rest of the mission priority is given to communication. TTC through UHF/VHF will be however be performed during imaging as well. The RADMON will also be shut off during downlinking communication to conserve power.

When the plasma brake phase begins, this limitation will change form somewhat, as data downlinking and TTC will now be performed with UHF/VHF only, which requires less power. However, the spinning up of the satellite as well as the operation of the tether will occur within a total angle of  $20^\circ$  over the poles, which will be partly in the coverage area of the ground station, necessitating to partially communication over plasma brake operation.

## Aalto-1 nanosatellite – technical description and mission objectives

A. Kestilä et al.

Title Page

Abstract

Introduction

Conclusions

References

Tables

Figures



Back

Close

Full Screen / Esc

Printer-friendly Version

Interactive Discussion



The RADMON will be shut off during communications and tether operation in order to make sure the gathered plasma brake and RADMON data as well as TTC within 24 h can be downlinked through the relatively narrow VHF.

## 5 Conclusions

5 The Aalto-1 student nanosatellite project is rapidly developing forward, and the preliminary design phase has concretized into a clear system design, developing subsystem construction and testing, and most important, as a solid set of goals and a mission design. The skeleton of the Aalto-1 science mission has been designed, with required targets for technical demonstration and operational procedures of the payloads developed. While every step of the actual science phase is not chosen yet, the framework with which the satellite will perform them has been designed and is being implemented.

The requirements of two drastically different parts of the science phase, the science observations phase and the plasma brake demonstration phase, have been taken into account and the operation designed according to the various bottlenecks that they cause, most important (and extensively interdependent) being attitude, power and downlinking communication bottlenecks. The downlinking communication and power budgets becomes especially constraining on the satellite when operating the spectral imager in the coverage area of the main, and only planned Aalto-1 ground station.

15 The work presented here points to the direction that nanosatellites can not only perform technology demonstrations, but also a meaningful campaign of scientific observations with, compared to more traditional space missions, very limited resources.

20 The future effort in the satellite project will consist of the critical design phase; freezing the design, and actual building and testing of all satellite subsystems. The goal will be to have a flight-ready model, including the needed support equipment and the ground segment, ready by the end of 2013, and a targeted launch for the beginning of 25 2014.

### Aalto-1 nanosatellite – technical description and mission objectives

A. Kestilä et al.

Title Page

Abstract

Introduction

Conclusions

References

Tables

Figures



Back

Close

Full Screen / Esc

Printer-friendly Version

Interactive Discussion





*Acknowledgements.* Antti Kestilä acknowledges the financial support of the Helsinki University Graduate School of Atmospheric Composition and Climate Change.

Rami Vainio acknowledges the financial support of Magnus Ehrnrooth foundation and Vilho, Yrjö and Kalle Väisälä foundation.

## 5 References

Antila, J., Miranto, A., Mäkynen, J., Laamanen, M., Rissanen, A., Blomberg, M., Saari, H., and Malinen, J.: MEMS and Piezo Actuator Based Fabry-Perot Interferometer Technologies and Applications at VTT, Proc. SPIE, 7680, 2010.

CDS – Cubesat Design Specifications, CubeSat Design Specification Rev. 12, The Cubesat Program, Cal Poly SLO, California Polytechnic State University, California, 8 January 2009.

10 Janhunen, P., Toivanen, P. K., Polkko, J., Merikallio, S., Salminen, P., Haeggström, E., Seppänen, H., Kurppa, R., Ukkonen, J., Kiprich, S., Thornell, G., Kratz, H., Richter, L., Krömer, O., Rosta, R., Noorma, M., Envall, J., Lätt, S., Mengali, G., Quarta, A. A., Koivisto, H., Tarvainen, O., Kalvas, T., Kauppinen, J., Nuottajärvi, A., and Obratsov, A.: Electric solar wind sail: Towards test missions, Rev. Sci. Instrum., 81, 111301, doi:10.1063/1.3514548, 2010.

15 Mannila, R., Näsilä, A., Praks, J., Saari, H., and Antila, J.: Miniaturized spectral imager for Aalto-1 nanosatellite, SPIE, Vol. 8176, 8176-80, 2011.

20 Näsilä, A., Saari, H., Antila, J., Mannila, R., Kestilä, A., Praks, J., Salo, H., and Hallikainen, M.: Miniature Spectral Imager for the Aalto-1 Nanosatellite, Proceedings of the European CubeSat Symposium, Brussels, Belgium, 30 January 2012.

Saari, H., Aallos, V., Akujärvi, A., Antila, T., Holmlund, C., Kantojärvi, U., Mäkynen, J., and Ollila, J.: Novel Miniaturized Hyperspectral Sensor for UAV and Space Applications, Proc. SPIE, 7474, 2009.

25 Seppänen, H., Kiprich, S., Kurppa, R., Janhunen, P., and Haeggström, E.: Wire-to-wire bonding of micrometer-diameter aluminium wires for the Electric Solar Wind Sail, Microelect. Eng., 88, 3267–3269, 2011.

US Patent US 8,130,380 B2: Spectrometer and Interferometric Method, Heikki Saari, VTT, 6 March 2012.

GID

2, 925–951, 2012

## Aalto-1 nanosatellite – technical description and mission objectives

A. Kestilä et al.

Title Page

Abstract

Introduction

Conclusions

References

Tables

Figures

◀

▶

◀

▶

Back

Close

Full Screen / Esc

Printer-friendly Version

Interactive Discussion

## Aalto-1 nanosatellite – technical description and mission objectives

A. Kestilä et al.

Title Page

Abstract

Introduction

Conclusions

References

Tables

Figures

⏪

⏩

◀

▶

Back

Close

Full Screen / Esc

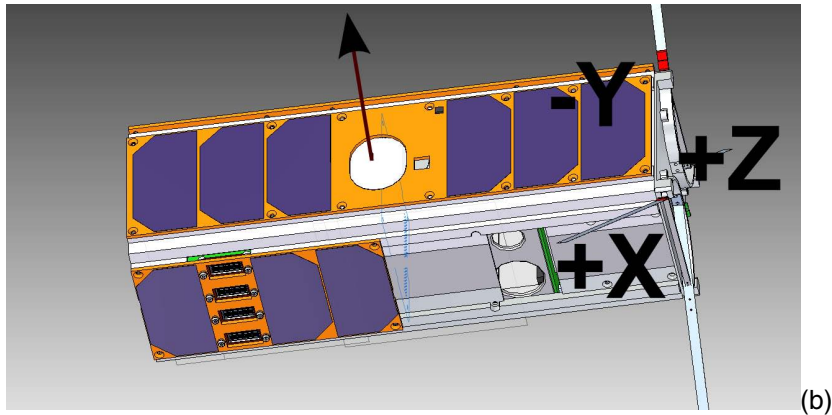
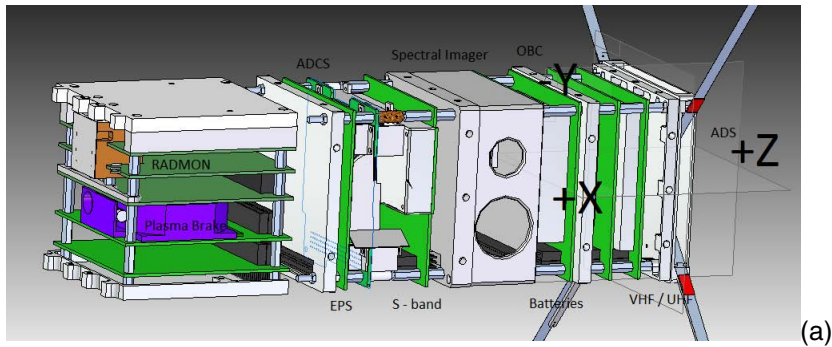
Printer-friendly Version

Interactive Discussion

**Table 1.** The electrostatic plasma brake demonstration phase steps.

Event	Average power	Time taken
1. Satellite assumes a correct sun pointing attitude	3.2 W	few minutes
2. Spin-up to 200° per second	2.6 W	158 h
3. Tether reel-out to initial 10 m at 1 mm s <sup>-1</sup> rate (EstCube-1 CubeSat length)	5 W	~ 4 h
4. Initial experiment with 10 m of tether deployed in both positive and negative modes (with the radiation monitor on)	5 W	1 month
5. Reeling out the tether to 100 m full deployment length	5 W	~ 34 h
6. Actual plasma brake experiment can begin, with the tether this time only in negative mode (with the radiation monitor on)	5 W	~ 1 yr
7. Continuing until the satellite has deorbited, once the primary experiment has been completed (optional)	5 W	~ 1 yr





**Fig. 1. (a)** A exposure of the Aalto-1 subsystems, in which EPS is the electrical power system, OBC the onboard computer and ADS the antenna deployment system (GPS receiver will be integrated with the s-band board). **(b)** The satellite's external dimensions are 10 × 10 × 34 cm. (The position of ADCS star tracker is at the center of the -Y-side alongside the smaller GPS antenna, represented here by the bigger and smaller holes, while the electron guns are at the left side of the +X-side.) The satellite's velocity vector will be parallel to its -Y direction.

**Aalto-1 nanosatellite  
– technical  
description and  
mission objectives**

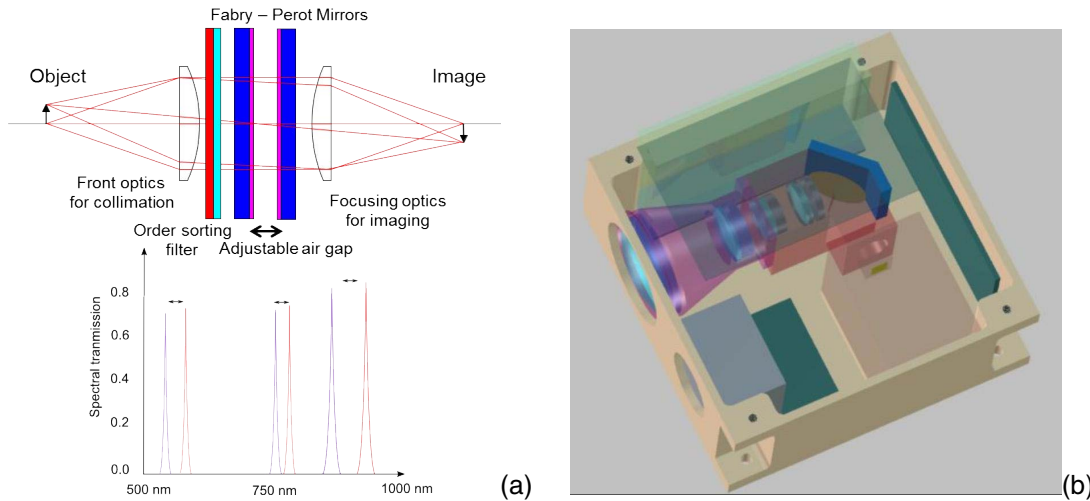
A. Kestilä et al.

Title Page	
Abstract	Introduction
Conclusions	References
Tables	Figures
⏪	⏩
⏴	⏵
Back	Close
Full Screen / Esc	
Printer-friendly Version	
Interactive Discussion	



## Aalto-1 nanosatellite – technical description and mission objectives

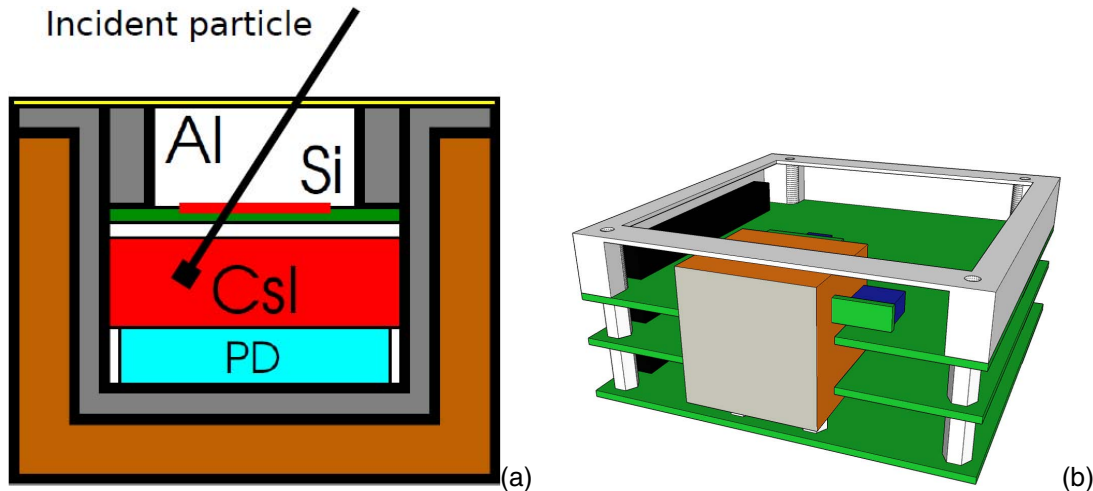
A. Kestilä et al.



**Fig. 2.** (a) The Fabry–Perot interferometer concept in work; the change in the Fabry–Perot mirror interdistance causes a change in the spectral bandwidth let to the imaging CMOS camera. (b) Structural view of the spectral imager instrument, the larger instrument representing the spectral imager, while the smaller (beneath) instrument is the VIS-camera (Saari et al., 2009).

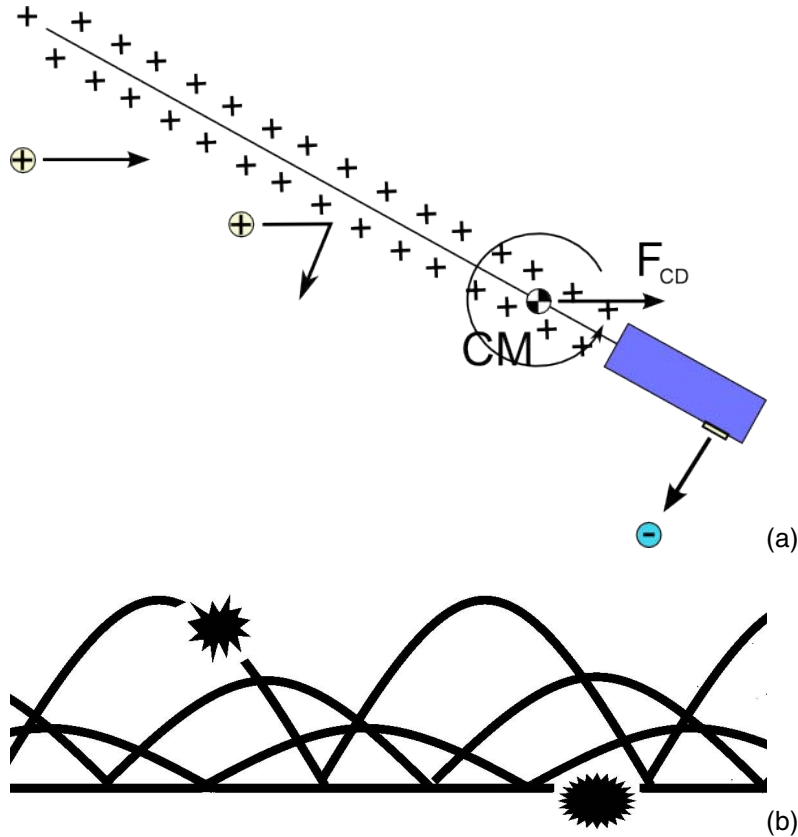
## Aalto-1 nanosatellite – technical description and mission objectives

A. Kestilä et al.



**Fig. 3.** (a) A cut of the RADMON detector unit showing the Si detector (blue chip) and the CsI(Tl) scintillator (red cube). Particles enter the system through the 300- $\mu\text{m}$  thick Al window (grey) and a signal from both detectors is required for counting the particle. The housing (brown) is made of brass. (b) Sketch of the RADMON unit including the stack of three PCBs (analogue, digital and power supply, from top to down) and the detector unit in the front (grey, brown box).

[Title Page](#)
[Abstract](#)
[Introduction](#)
[Conclusions](#)
[References](#)
[Tables](#)
[Figures](#)
[⏪](#)
[⏩](#)
[◀](#)
[▶](#)
[Back](#)
[Close](#)
[Full Screen / Esc](#)
[Printer-friendly Version](#)
[Interactive Discussion](#)



**Fig. 4.** (a) The situation with a positively charged tether; charged particles collide with it, creating the Coulomb drag force  $F_{CD}$  parallel to the particle stream experienced by the whole spacecraft system (tether and spacecraft), while the tether itself is kept taut by the rotation of the spacecraft around its common center of mass CM (not to scale). (b) Redundant strands ensure a level of tolerance to tearing (Seppänen et al., 2011).

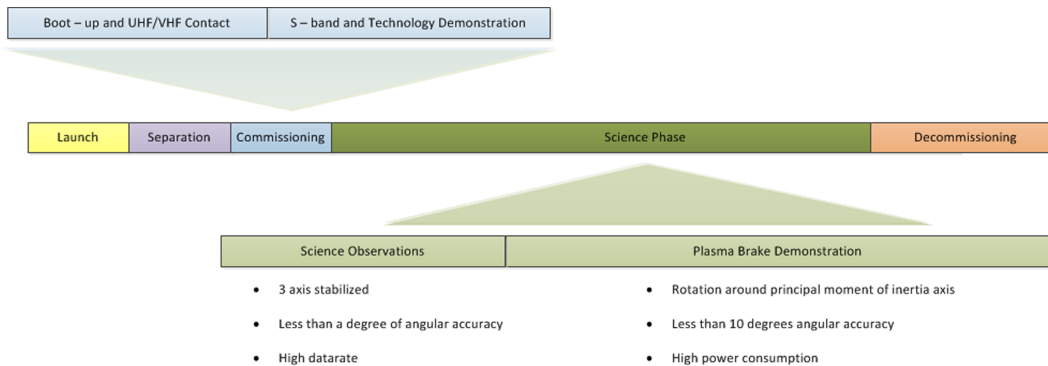
**Aalto-1 nanosatellite  
– technical  
description and  
mission objectives**

A. Kestilä et al.

Title Page	
Abstract	Introduction
Conclusions	References
Tables	Figures
◀	▶
◀	▶
Back	Close
Full Screen / Esc	
Printer-friendly Version	
Interactive Discussion	

## Aalto-1 nanosatellite – technical description and mission objectives

A. Kestilä et al.



**Fig. 5.** The commissioning phase will consist of booting up the satellite, making contact with ground and performing the required technical demonstration for the spectral imager and RAD-MON. The science phase is divided into two specific parts based on attitude and downlinking communication requirements.

Title Page

Abstract

Introduction

Conclusions

References

Tables

Figures

⏪

⏩

◀

▶

Back

Close

Full Screen / Esc

Printer-friendly Version

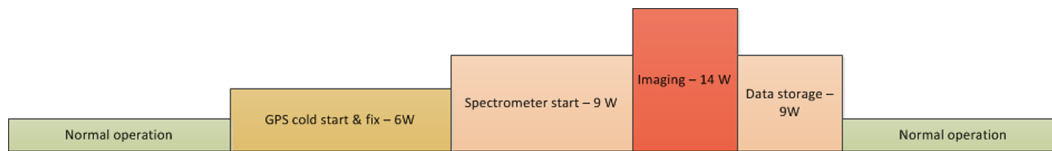
Interactive Discussion





## Aalto-1 nanosatellite – technical description and mission objectives

A. Kestilä et al.



**Fig. 6.** The imaging sequence (not to timescale) with the spectral imager and associated total satellite power usage at an orbit height of 700 km, the total time taking a few minutes for this whole sequence (GPS cold-start is by far the longest, the rest requiring around a second per operation block). As the spectral imager technology develops further, the power and time requirements presented here will most likely lessen. The power values here represent the total satellite power usage during a particular operation block within the imaging sequence.

Title Page

Abstract

Introduction

Conclusions

References

Tables

Figures

⏪

⏩

◀

▶

Back

Close

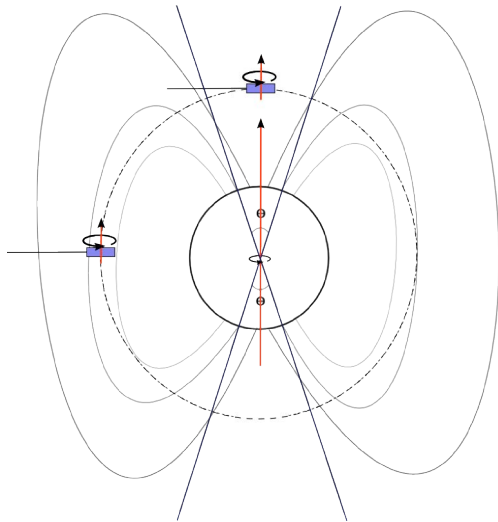
Full Screen / Esc

Printer-friendly Version

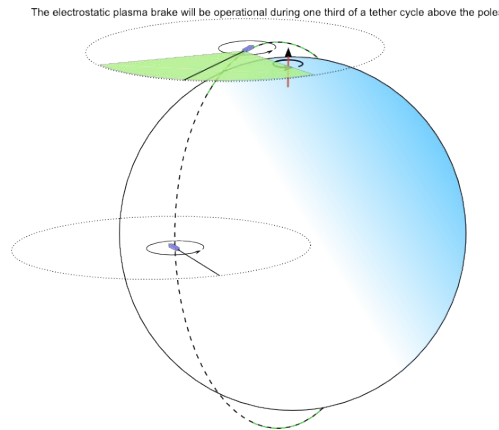
Interactive Discussion







(a)



(b)

**Fig. 8. (a)** An example of the satellite moving in the magnetic field of the Earth. **(b)** Illustrating how the tether is active only in the vicinity of the poles (within an angle of  $20^\circ$ ), marked as angle  $\Phi$  in **(a)**.

**Aalto-1 nanosatellite  
– technical  
description and  
mission objectives**

A. Kestilä et al.

Title Page	
Abstract	Introduction
Conclusions	References
Tables	Figures
⏪	⏩
◀	▶
Back	Close
Full Screen / Esc	
Printer-friendly Version	
Interactive Discussion	