

Investigation of a low-cost magneto-inductive magnetometer for space science applications

Leonardo H. Regoli¹, Mark B. Moldwin¹, Matthew Pellioni¹, Bret Bronner², Kelsey Hite¹, Arie Sheinker³, and Brandon M. Ponder⁴

¹Climate and Space Sciences and Engineering, College of Engineering, University of Michigan, Ann Arbor, USA

²Space Physics Research Laboratory, College of Engineering, University of Michigan, Ann Arbor, USA

³Magnetic Sensing, Soreq Nuclear Research Center, Israel

⁴Nissan Technical Center North America (NTCNA), USA

Correspondence to: Leonardo H. Regoli (lregoli@umich.edu)

Abstract. A new sensor for measuring low-amplitude magnetic fields that is ideal for small spacecraft is presented. The novel measurement principle enables the fabrication of a low-cost sensor with low power consumption and with measuring capabilities that are comparable to recent developments for CubeSat applications. The current magnetometer, a software-modified version of a commercial sensor, is capable of detecting fields with amplitudes as low as 8.7 nT at 40 Hz and 2.7 nT at 1 Hz , with a noise floor of $4 \text{ pT}/\sqrt{\text{Hz}}$ @ 1 Hz . The sensor has a linear response to less than 3% over a range of $\pm 100,000 \text{ nT}$. All of these features make the magneto-inductive principle a promising technology for the development of magnetic sensors for both space-borne and ground-based applications to study geomagnetic activity.

1 Introduction

Magnetic fields are a ubiquitous feature of our solar system and of key importance for geophysical, magnetospheric and heliospheric investigations. The sun produces the interplanetary magnetic field (IMF) and many of the planets and moons throughout the solar system produce their own magnetic fields through dynamo and magneto-inductive response processes. Even where no internally produced magnetic field is present, for example, Mars, or Venus, the IMF plays a major role in how planets and smaller bodies interact with the solar wind.

At Earth, the measured field is a combination of the internal dynamo-generated field and perturbations that occur in space, particularly during substorm and geomagnetic storm processes. These processes are governed by the direction of the IMF and the dynamic pressure exerted by the solar wind at any given time (e.g., Moldwin, 2008). The enhancement of the particle fluxes in the ring current during a geomagnetic storm causes the measured magnetic field strength at the surface of the Earth to decrease. This is quantified by the so-called disturbance storm time (Dst) index, which is determined by a network of low-latitude magnetometers (e.g., Hamilton et al., 1988; Liemohn et al., 2001).

The dynamic nature of planetary magnetospheres makes it extremely difficult, if not impossible, to understand their structure without the help of a magnetometer with sufficient resolution, dynamic range, and bandwidth, to discriminate between the different regions inside the magnetosphere and identify the magnetic signature of plasma flows that are governed by global and

local circulation patterns. For this reason, magnetometers have been a key tool in magnetospheric investigations throughout the history of their study and continue to be indispensable. Critically, current (e.g. MMS, Russell et al. (2016) and Cluster, Balogh et al. (1997)) and planned (e.g. MagCon, Kepko and Le (2004)) investigations of multi-scale dynamic features throughout the solar system continue to drive the need for greater numbers of magnetometers with state of the art capabilities.

5 1.1 ULF waves in the magnetosphere

The Earth’s magnetosphere, whose field strength varies from about 60,000 nT in polar LEO orbit to about 100 nT at geosynchronous orbit, have different wave populations present with frequencies ranging from a few mHz to a few Hz on both the day- and nightside. Traditionally, the continuous pulsations which are denoted by Pc1-5 can be divided into categories that are characterized by a given frequency range as summarized in Table 1 (e.g., Jacobs et al., 1964; Fraser, 2007; Menk, 2011).

Table 1. ULF waves in the magnetosphere.

Wave	Frequency	Amplitude
Pc1	0.2 – 5 Hz	$\sim 0.1\ nT$
Pc2	0.1 – 0.2 Hz	$\sim 0.5\ nT$
Pc3	22 – 100 mHz	$\sim 0.5\ nT$
Pc4	7 – 22 mHz	$\sim 10\ nT$
Pc5	1 – 7 mHz	$\sim 50\ nT$

10 These waves provide an insight into magnetospheric dynamics including wave-particle interactions (mostly Pc1 and Pc2), the solar wind activity (Pc3 to Pc5, Takahashi et al. 1984, Takahashi and Ukhorskiy 2008), as well as internal processes (e.g., Hartinger et al., 2014).

Several studies have focused on the relationship between fluctuations in solar wind conditions and the observation of ULF waves in the magnetosphere and on ground stations. Among others, Kessel (2008) used data from the ACE, Wind, Geotail, Cluster and GOES satellites and from ground stations to perform a statistical study during a period of time of over a month and found that for most of the time when Pc5 waves were observed, their amplitude and power were related to fluctuations in the solar wind, with only about 20% of the total power coming from internal processes. A similar dependence on solar wind conditions has been observed for waves in the Pc3 (e.g., Constantinescu et al., 2007; Clausen et al., 2009) and the Pc3-4 range (Heilig et al., 2007).

20 Given their dependence on different aspects of the interaction between the solar wind and the magnetosphere, Pc3 to Pc5 waves, when measured on the dayside, provide a way of studying how the global magnetosphere reacts to changes in heliospheric parameters such as solar wind density, solar wind speed and IMF (e.g., Shen et al., 2015; De Lauretis et al., 2016; Takahashi et al., 2016; Shen et al., 2017).

The use of ground-based magnetometers, depending on their distribution around the globe and in combination with global models of the magnetosphere, can also shed light on how global the disturbances are, by correlating the signals observed at different latitudes with the length of the corresponding magnetic field lines.

In addition, and due to the dependence of the Alfvén velocity on the local plasma density, ground magnetometers can be used to infer low-energy populations that are difficult to measure in space due to spacecraft charging effects (Menk et al., 1999). In a similar manner, the observation of field line resonances has been used to infer other properties of the magnetosphere such as location (Dent et al., 2006), density (Berube et al., 2003) and composition (Takahashi et al., 2008) of the plasmapause or also the location of the open-closed field line boundary (Ables and Fraser, 2005).

One of the difficulties of studying waves in the magnetosphere is that conditions change rapidly and thus standing waves are difficult to maintain (Kivelson, 2006). This translates into a strong damping of the waves and thus multi-point observations are necessary to study the different regions affected at the same time.

The use of small satellites with commercial off-the-shelf (COTS) instruments on board opens the possibility of having large, cost-effective constellations, making it possible to study both large structures that are visible at magnetosphere-scales as well as small structures such as magnetic reconnection that are close to the electron scales (Burch et al., 2016).

1.2 Measurement approaches

With the growing interest of the scientific community in small satellites as a tool to perform magnetospheric and heliospheric studies, the need for space instruments that are cheaper and easier to produce has given rise to the study of different possibilities including the use of COTS components or complete instruments. Originally CubeSats were mostly seen as technology demonstration platforms, however there are now missions with scientific instrumentation being flown and proposed (e.g., Moretto, 2008; Springmann et al., 2012; Klesh et al., 2013; Heine et al., 2015; Lepri et al., 2017; Goel et al., 2017; Zurbuchen et al., 2016).

When it comes to magnetometers, due to their reliability, performance and ability to measure low fields, two types of sensors have predominantly been used for space missions, namely fluxgate and helium magnetometers. However, due to their high fabrication costs, relatively large size and high power needs, different alternatives have been recently studied for CubeSat missions. One approach is to miniaturize fluxgate magnetometers, while the other is to explore chip-based COTS technologies such as magneto-resistive and Hall magnetometers.

Miles et al. (2016) developed a miniature fluxgate magnetometer with noise floor of about $200 \text{ pT}/\sqrt{Hz}$ @ 1 Hz with a power consumption of 400 mW , considerably smaller than instruments used in large missions such as Cassini (up to 12.63 W combining a fluxgate and a vector helium magnetometer, Dougherty et al. 2004) and, more recently, the Magnetospheric Multiscale Mission (MMS, almost 2 W for the fluxgate instrument, Russell et al. 2016).

Also using the fluxgate measurement principle, Matandirotya et al. (2013) compared three COTS instruments with special focus on parameters relevant for space applications. They identified one specific magnetometer, the LEMI-011B that, after modifications involving separation of the sensor and the electronics, was able to achieve noise levels below 1 nT @ 12.83 Hz and 30 mW power consumption.

Taking advantage of the mobile phone popularization that happened during the last decade, Ponder et al. (2016) evaluated the possibility of using a smartphone magnetometer to perform magnetospheric studies, finding that, despite the relatively poor performance of these magnetometers in terms of resolution, they could still be used to detect certain processes happening

at different regions of the magnetosphere such as field-aligned currents (FAC), auroral electrojet and equatorial electrojet signatures.

A similar approach was taken by the AMPERE project (Anderson et al., 2000) making use of the engineering magnetometers on-board the commercial satellites of the IRIDIUM constellation. With a resolution of 48 nT, they are able to capture signals above the noise level of the instruments at high latitude that correspond to perturbations coming from FACs. The availability of a large number of satellites (>70) makes it possible to obtain global measurements of Birkeland currents with a time resolution impossible to obtain with smaller configurations.

Using a hybrid approach, Brown et al. (2014) achieved sensitivities below 3 nT with the use of magnetoresistive technology. The power consumption of their instrument is comparable to that achieved by the one presented by Miles et al. (2016), at 425 mW for science applications. Their instrument also provides the possibility of being used for attitude determination. Under this latter mode, the power consumption is reduced to 140 mW.

Using the anisotropic magnetoresistance (AMR) measurement principle, Fish et al. (2014) developed a sensor specific for the DICE CubeSat mission. They achieved a resolution of 5.5 nT over a range of 1500 nT. The sensor also includes a degauss circuit to counteract saturation of the AMR elements. In total, the sensor has a weight of 25 g and a power consumption of 108.9 mW. AMR magnetometers are, however, limited by the dependence of their gain on the magnitude of the field. This sets a strong limitation when trying to measure low fields.

A comprehensive review of commercial magnetometers suitable for space applications until the end of the previous decade, including a historical perspective, can be found in Diaz-Michelena (2009). In general, small sensors present important progress in terms of size, mass, power consumption and cost and, while the measurement capabilities are still not at the level of those developed for larger missions, the resolutions and noise levels are already at values sufficiently good to be considered for small scientific missions.

In this paper we present the testing and characterization of a software-modified version of a COTS magnetometer in the scope of reduced size, weight, power and cost (SWAP+C) space physics applications. The RM3100 magnetometer, built by PNI Sensor Corporation, is based on a measurement principle significantly different from the current standards for space applications like fluxgate, helium, magneto-resistive or Hall magnetometers.

The sensor is intended for Earth-based applications and is particularly well suited for automotive applications such as compassing or for detection of nearby objects due to its small size. However, its performance under magnetic field conditions observed at planetary magnetospheres, as evaluated in this study, makes the magneto-inductive technology a promising one for low-cost space missions based on small satellite technologies. Taking into account the determined resolution and frequency response of the instrument, its performance is promising for the study of magnetospheric ultra-low frequency (ULF) waves and small-scale current systems.

2 The magneto-inductive technology

The RM3100 magnetometer (shown in Figure 1) is based on the magneto-inductive principle. All the data presented in this paper were gathered with a modified version of the COTS sensor. The modifications thus far consist of optimization of internal parameters of the sensor that allowed us to improve its performance. These are software modifications and no hardware changes

5 were made for any of the tests described.

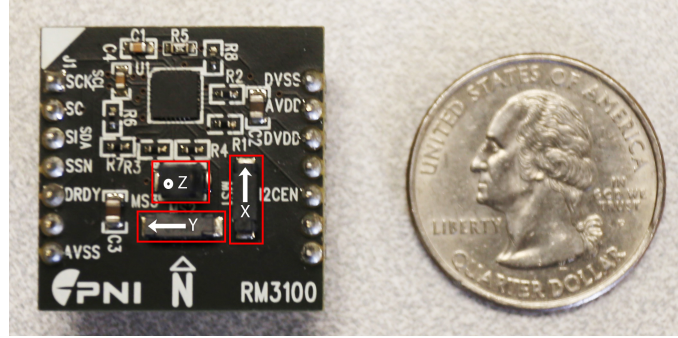


Figure 1. PNI RM3100 magnetometer shown next to a quarter coin for size comparison. The red rectangles show the location of the sensing coils.

The COTS version shown in Figure 1 consists of the orthogonal coils (indicated with red rectangles), and an ASIC controller with the peripheral electronics. In order to communicate with the ASIC controller, a PNI CommBoard was used. The CommBoard introduces a constant interference of up to several hundreds of nT, which is easily eliminated by removing the bias. However, this CommBoard is only used for test purposes. A new dedicated electronic circuit and a microcontroller has

10 been designed for integration into a small satellite.

The sensor is a simple resistor-inductor (RL) circuit that does not use an analogue-to-digital (A/D) converter, one of the electronic components that is sensitive to external radiation in traditional fluxgate magnetometer designs. The operating principle of the PNI sensor involves measurement of the time it takes to charge and discharge an inductor between an upper and lower threshold by means of a Schmitt trigger oscillator. This time is proportional to the applied field strength, within a specified

15 operational range. A simple diagram of the electronics is shown in Figure 2, taken from Leuzinger and Taylor (2010).

The total magnetic field that the sensor experiences (H) is due to the external field and the field generated by the circuit ($H = kI + H_E$, where k is a property of the coil, I is the current through the circuit and H_E is the external field). The Schmitt trigger causes the current through the circuit to oscillate as the voltage across the resistor (R_b) passes a set 'trigger' value. As the applied current oscillates the inductance of the circuit (and hence the time constant) changes. This behavior can be seen

20 in Figure 3, where $\mu(H)$ represents the induction curve of the sensing coils, τ_P and τ_N represent the positive and negative bias charge-discharge time respectively, H_L and H_H the low and high charge threshold, H_S the is the positive-to-negative bias (adjusted to take advantage of the symmetry of the induction curve) and H_E is the inductance bias caused by the external field.

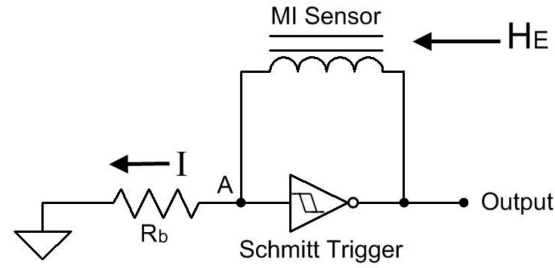


Figure 2. Schematics of the electronics involved in the magneto-inductive technology (from Leuzinger and Taylor (2010)).

When no external field is applied, the charge and discharge times calculated at both polarities are the same ($\tau_P = \tau_N$). However, if an external field is applied (H_E), the working region along the curve will be shifted in one direction, and consequently the charge and discharge times will no longer be equal ($\tau_P > \tau_N$ for the specific case shown in Figure 3). This time difference is proportional to the applied external field.

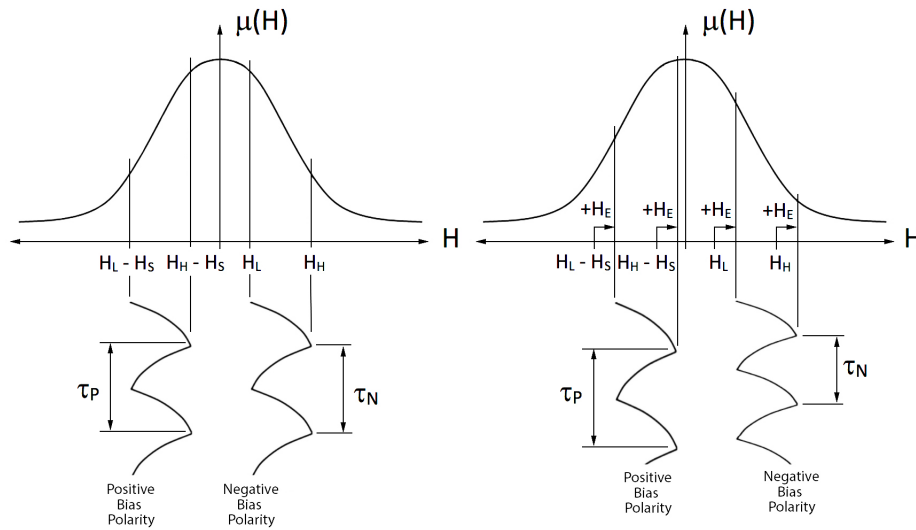


Figure 3. The induction in the coils as a function of applied magnetic field (top) and the traces of the oscillating current in the solenoid and the period for positive and negative bias polarity (bottom) (from Leuzinger and Taylor (2010)).

- 5 An applied magnetic field causes a constant offset in the coils' field strength, the polarity of which is determined by the direction of the field. This offset causes the average permeability and therefore inductance to be lower in one direction and larger in the other yielding a corresponding difference in the time required to complete the minor B-H loops in each direction.

By integrating over many such minor loops in each direction, the time difference, and therefore available resolution, can be enhanced to any desired level subject to integrated noise sources.

In the commercial version of the sensor, the number of loops used for integration is controlled by a register called cycle count and, for all the experiments presented in this paper, this value was set to 800. The value of this register is inversely proportional to the sampling frequency which, for this paper was of approximately 40 Hz (although set to sample at 40 Hz , the real sampling frequency is slightly lower than this by less than 1 Hz).

The lack of an A/D converter, together with the absence of amplifiers required in traditional fluxgate magnetometers reduces the power consumption, the mass and the size. Additionally, being a COTS chip-based sensor, it is possible to produce it in large batches, something much more difficult in the case of larger sensors such as fluxgate or helium magnetometers.

In addition to the described advantages, a similar sensor based on the same technology and also built by PNI, the MicroMag3 (basically an earlier version of the RM3100), has been flown in space on-board a CubeSat (Springmann et al., 2012). The sensor, part of the RAX mission, was used as part of the attitude determination system.

3 Characterization of the sensor

Five different tests were performed to characterize the sensor. The tests were aimed specifically at determining the sensor's resolution (defined as the root-mean-square or RMS noise), stability, linearity and frequency response. In the beginning of this section, the testing facilities used during the data collection are described. Then, the tests performed will be presented, along with their corresponding results.

For all the tests presented in this paper, a sampling frequency of 40 Hz was used while taking individual measurements for each of the axes which are either analyzed separately (like in the case of linearity) or together in the form of field magnitude (for the rest of the tests). The orthogonality of the coils was not studied but will be the focus of future tests.

The tests were carried out using a three-layer shield can and a copper room (with μ -metal lining), shown in Figure 4, in order to reduce the influence of the Earth's magnetic field and any additional interference during the data collection. Both structures are available at the Department of Climate and Space Sciences and Engineering (CLASP) and the Space Physics Research Laboratory (SPRL) at the University of Michigan.

In order to assess the ability of the shield can and the copper room to isolate the external field, 30 second measurements without applying an external field were taken with different configurations, either inside or outside the shield can and the copper room in every possible combination. This test also served to measure the resolution of the RM3100, so the results are presented in the relevant sub-section.

As a cross-calibration tool to contrast the values obtained by the RM3100 magnetometer, a Meda uMAG fluxgate magnetometer with a 1 nT resolution was used (MEDA, 2005). This resolution is about an order of magnitude finer than that of the unmodified RM3100 according to the specifications provided by its manufacturer.



Figure 4. Three-layer shield can (left) and copper room (right) used for the characterization for the PNI RM3100 magnetometer.

For all the tests presented in this section, the sensor was run at a sampling frequency of 40 Hz. While the sensor can be run to much higher frequencies, the choice of 40 Hz, which would allow measurement of periodic signals with frequencies up to 20 Hz, is based on the applicability of the magnetometer to measure ULF waves in the magnetosphere.

3.1 Resolution

- 5 The resolution of the sensor represents the minimum change in the strength of the applied magnetic field that can be detected. Its value is directly related to the the least significant bit of the sensor and its inherent noise floor, which must be taken into consideration during testing. As stated before, the resolution was determined using the shield can and the copper room at CLASP and SPRL. The configurations are listed in Table 2.

Table 2. Resolution tests set-up and results.

Configuration	Description	STD (nT)
1	Outside shield can, outside copper room	34.23
2	Inside shield can, outside copper room	11.26
3	Outside shield can, inside copper room	8.84
4	Inside shield can, inside copper room	8.73

- 10 The results are shown in Figure 5, where the de-trended measured magnitude of the magnetic field is presented. In the legend, SC stands for shield can and CR stands for copper room.

- 15 Since no external field is being applied during the data collection, any field present will correspond to a combination of the Earth's field and the one produced by AC power lines (60 Hz) which is the primary cause of the large oscillations present in the blue curve. The 60 Hz signal is still present when the sensor is placed inside the shield can but outside the copper room (configuration 2) but it is efficiently removed for configurations 3 and 4. The Earth's field is removed from the curves by de-trending the data before producing the plots.

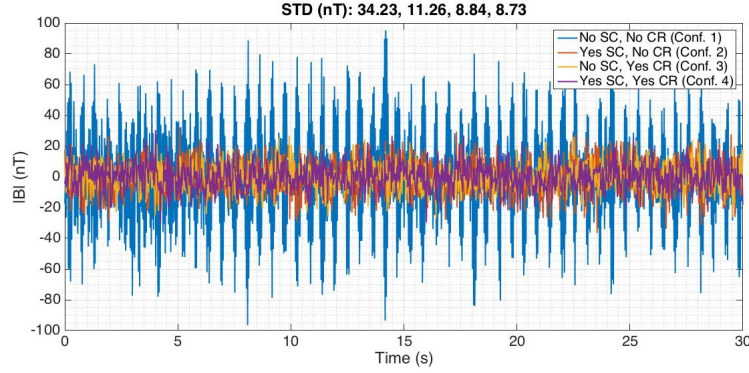


Figure 5. Zero applied field measurements under different shield can/copper room configurations.

From the standard deviation of the measurements (STD values shown in Table 2, equivalent to the RMS noise) it can be seen that the most effective way of removing the background field is to use the copper room, with the use of the shield can improving the results by just about 1.2%.

We take the lowest value (8.73 nT) as the resolution of the sensor. This value is already close to the digital resolution of the instrument (determined by the least-significant bit of the digital output) which, with the configuration being used, is about 3.33 nT/LSB .

Another standard way of measuring the capability of an instrument is by determining its noise floor. The frequency response of the sensor's noise features a $1/f$ dependence. Since the noise density is not flat, the resolution alone does not fully describe the sensor's ability to detect low frequency signals. Thus, the noise density at 1 Hz is used as the noise floor.

This is calculated by performing a Fast Fourier Transform (FFT) of the autocorrelation function of the measured signal with a given DC field and calculating the value of the power spectrum at 1 Hz . Figure 6 shows the noise density for ten different measurements taken under the same field conditions. Each measurement cycle consisted of 1 h period at a sampling frequency of 40 Hz and the mean of the five calculated values was taken, giving a noise floor of $4 \text{ pT}/\sqrt{\text{Hz}} @ 1 \text{ Hz}$.

If signals with low frequency are to be measured, over-sampling and further averaging can significantly decrease the noise level. This can be seen in Figure 7 that shows the RMS noise with respect to the number of samples used for averaging the data. Given the random nature of the data being analyzed (the sensor's noise), a simple rectangular window was applied for the averaging. For this plot data collected over a period of 100 hours (see next sub-section for a stability analysis) were used and different number of samples were used for averaging.

Since the sampling frequency used during the data collection was 40 Hz , the plot gives the noise level that could be expected when measuring changes in the field with frequencies ranging from 40 Hz (no averaging) down to 1 Hz (averaging over 40 samples). From the plot it can be seen that already using 4 samples for the averaging brings down the noise level to less than 5 nT , while increasing the number of samples to 20 brings the noise to about 2.7 nT and for 40 samples (which corresponds to 1 s cadence data) the noise level is 2.2 nT .

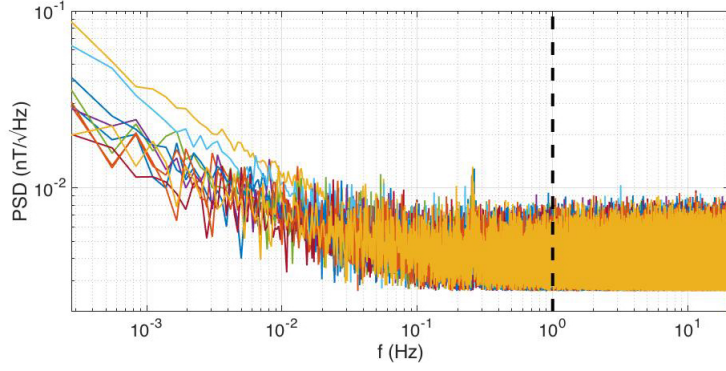


Figure 6. Power spectral density of ten different signals with duration of 1 *h* with an external DC field. The level of the noise density at 1 Hz (vertical dashed line) is taken as a measure of the noise floor of the instrument.

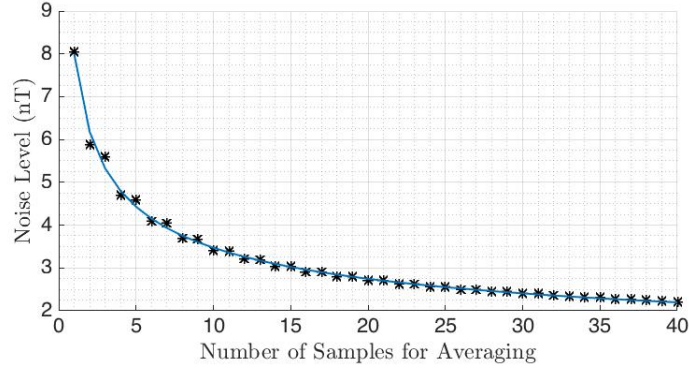


Figure 7. Noise level for different sizes of averaging window. The solid line represents a second order polynomial fit to the data.

3.2 Stability

The stability of the sensor determines how constant the output will be under no variations of the external field (input). To measure the stability of the RM3100 magnetometer, the sensor was placed in the shield can, with no external magnetic field applied (just the residual of the Earth's field), and was set positioned so that the Z-axis of the sensor was aligned vertically with the shield can. The system was left running for 100 *h*. During this time, the sensor worked without any loss of data and no appreciable variation of the detected magnetic field above the noise floor was observed.

Figure 8 shows a histogram with the distribution of the measurements gathered over the 100 *h* after removing the residual field. The fact that the distribution is normal (with a Kurtosis index of 3.00) shows the random nature of the variability observed which corresponds to the intrinsic noise of the instrument.

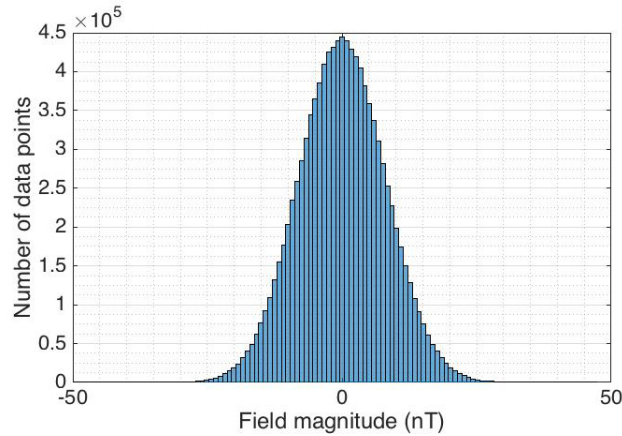


Figure 8. Distribution of measurements during stability analysis.

3.3 Linearity

For a sensor to produce reliable measurements, it needs to perform linearly. This means that a change in the quantity being measured must produce a proportional change in the output of the instrument, with the proportionality being maintained throughout the whole range of the instrument.

- 5 To test the linearity of the RM3100 magnetometer, the sensor was placed inside the shield can and an external field was applied with the help of a coil aligned with the axis of interest of the instrument. The field was varied from $-100,000 \text{ nT}$ to $+100,000 \text{ nT}$ in steps of approximately $4,500 \text{ nT}$ and for each field value the sensor was exposed for 10 seconds. After this, the median of the measured values was taken and the results obtained are shown in Figure 9.

Each panel represents a specific axis at which the external field was applied. On top of each plot, the slope and offset of a linear fit for the corresponding axis are listed. The three slopes are close to 1, varying by no more than 3%, meaning that the sensor remains linear over the whole range tested. The axis with the largest offset is the Y-axis, although the goodness of fit does not vary with respect to the other two axes. In addition, this value is larger than that reported by the manufacturer (0.5 %), meaning that this deviation is due to a misalignment between the axis of the applied field and the coil. With the current experimental setup it is not possible to measure this misalignment and thus we take the value of 3% as an upper limit for the linearity.

It can be seen that, while the two axes not being affected should remain constant, the field in fact does change over the range of the experiment. This is caused by a misalignment of the sensor with the axis at which the field is being applied, something that we are not correcting for in this set of tests.

Figure 10 shows the non-linearity for each individual axis, taken as the difference between the corresponding measurements taken by the sensor and the linear fit to the data shown in Figure 9 for each axis. All the axes show a similar trend, with the maximum deviation from linearity happening at larger fields and a sinusoidal-like pattern at the center of the measurement

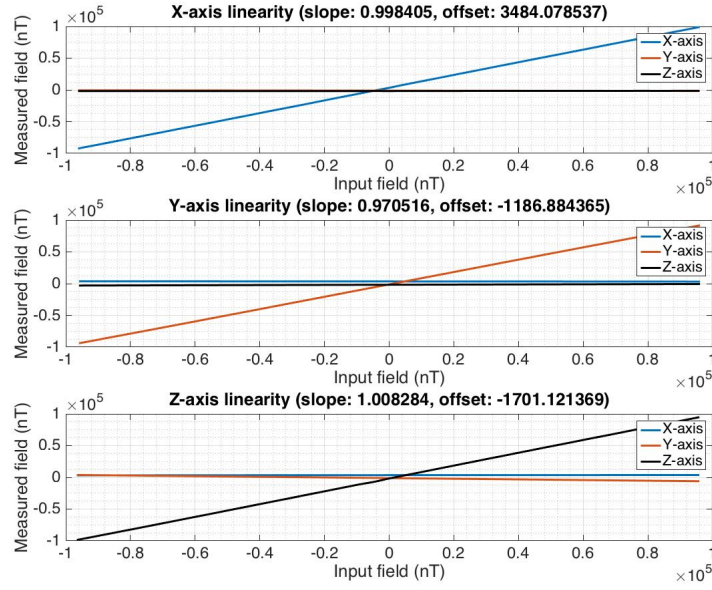


Figure 9. Results of the linearity test shown as the output (measured) field vs. input (applied) field for the three axes of the magnetometer.

range. In this central region, the maximum deviation is of 200 nT at a field strength of 40,000 nT, which represents an error of 0.5 %.

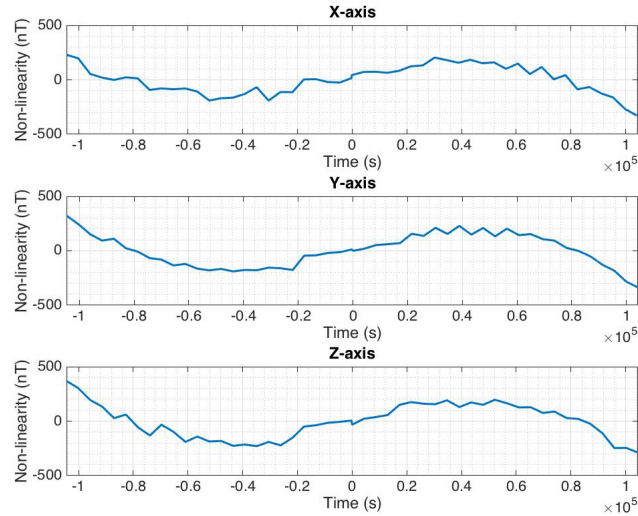


Figure 10. Non-linearity of the sensor for each axis defined as the difference between the measured field and a linear fit to the data.

3.4 Frequency response

For the RM3100 magnetometer to be considered for space physics applications, it must be capable of measuring magnetospheric waves. This translates into the magnetometer being able to distinctively detect signals with low amplitude and in the ultra-low frequency (ULF) range, ideally up to 5 Hz.

- 5 In order to evaluate the frequency response of the magnetometer, the sensor was placed inside the shield can and sinusoidal signals with varying frequency between 1 and 20 Hz were applied. The initial amplitude of the field for the 1 Hz signal was 346 nT , set with a function generator with a fixed voltage. While the amplitude of the signal will change with increasing frequency due to the change in the impedance of the coil used for the generation of the field, this does not affect the results presented here since we don't measure the RMS value of the detection, but rather the signal-to-noise ratio (SNR).
- 10 For each measurement, the noise density of the signal was calculated and two parameters were used to characterize the quality of the detection. The two parameters, dependent on the frequency of the signal, are shown in Figure 11.

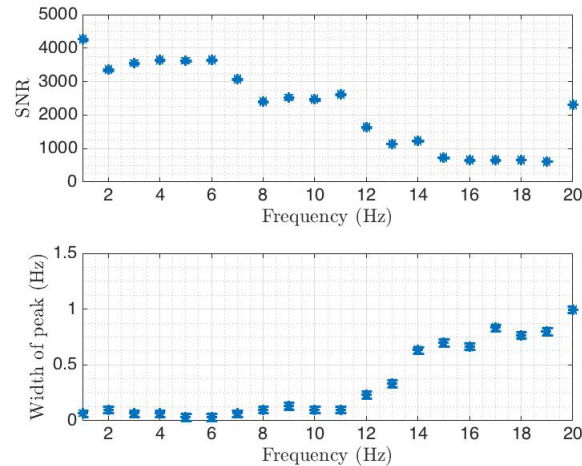


Figure 11. Signal-to-noise ratio (top panel) and width of the peak (bottom panel) detected by the RM3100 as a function of the input signal frequency.

- The first one is the SNR as a way to evaluate how prominent the peak of the detected signal was with respect to the background noise. The error bars are derived from the standard noise of the signal outside the peak. The second plot shows the width of the peak in the Fourier transform. This parameter is analogous to the full width at half maximum, only that the width was calculated where the signal corresponded to 5% of the peak. The reason for this arbitrary factor is that, at half maximum, the peak is still so narrow that the corresponding frequencies cannot be resolved. This, in turn, is a consequence of the frequency bin size which, for the current experiments, is 33.3 mHz . This bin size corresponds to the error bars shown.

- From the figure it can be seen that the response of the sensor is quite linear up to 6 Hz and has a significant decrease in both the SNR and the width of the peak at around 12 Hz. This places the performance of the sensor in a promising position to study ULF waves in the magnetosphere that can reach frequencies of about 5 Hz in the case of Pc1.

Figure 12 shows four different power spectral density plots for increasing frequency of the input signal, showing the degradation of the detection, mostly visible in the increasing width of the detected peak.

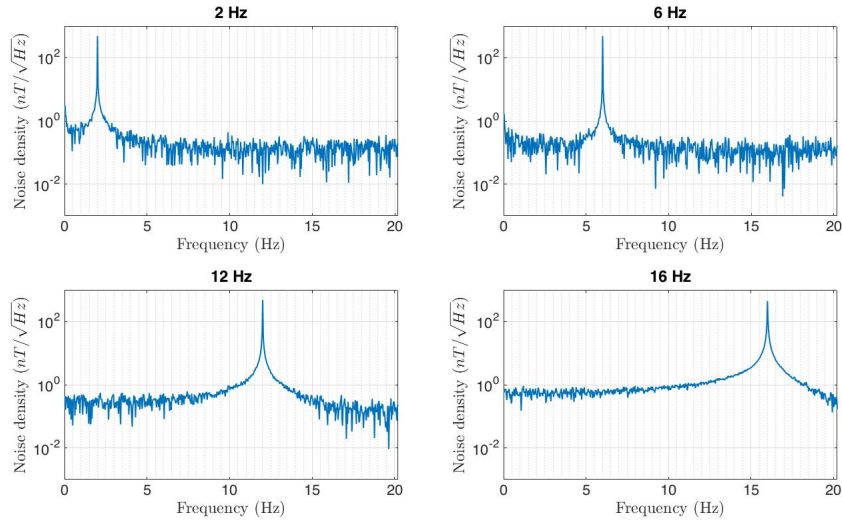


Figure 12. Noise density plots for four different frequencies of the input signal.

The widening of the peak at the frequency being studied arises from a distortion that appears in the measured signal as can be seen in Figure 13, where the time series of the signals corresponding to the PSD plots from Figure 12 are presented.

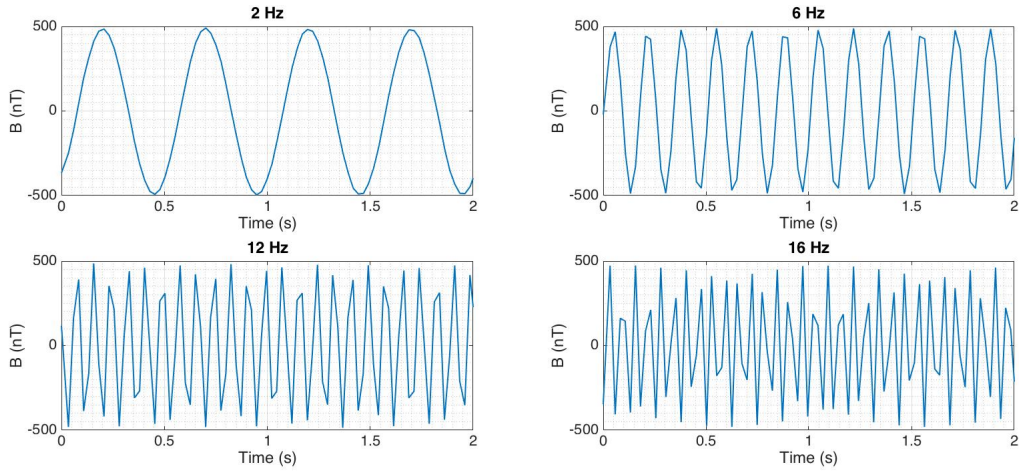


Figure 13. Detected signals for four different frequencies.

The distortion is an effect of the sampling frequency not being sufficiently high and it gets worse when the frequency of interest is close to the Nyquist frequency of the system (half the sampling frequency) so this effect can be avoided by increasing the sampling frequency. As mentioned before, there is a compromise between the sampling frequency and the noise floor of the instrument but the current development of a new instrument using the magneto-inductive technology at the University of Michigan will allow for higher sampling frequencies without compromising the resolution of the sensor.

4 Discussion

Table 3 shows a summary of the characteristics of the RM3100 magnetometer together with other magnetometers flown in space as reference.

Table 3. Performance comparison of different magnetometers.

Sensor	Range [nT]	Freq. [Hz]	Noise [nT/\sqrt{Hz}]	Mass [g]	Dimensions [mm]	Power [W]	Cost (\$)
MMS DFG ^a	$\pm 10,500$	128	$< 0.008 @ 1 Hz$	140	42.4 x 44.3 x 48.7 (s) 700 x 1100 (e)	0.45	$> 1 M$
Cassini FG ^b	$\pm 44,000$	32	$< 0.005 @ 1 Hz$	440*	-	7.5	$> 1 M$
Miles FG ^c	$\pm 65,536$	100	$0.2 @ 1 Hz$	112	36 x 32 x 28 (s) 96 x 91 (e)	0.4	$\sim 25 k$
MAGIC ^d	$\pm 57,500$	20	$0.15 @ 1 Hz$	104	20 x 20 x 5 (s) 90 x 96 (e)	0.5	$> 1 k$
LEMI-011B ^e	$\pm 60,000$	20	$0.7 @ 12.83 Hz$	≤ 120	50 x 16 x 16 (s) 55 x 50 (e)	0.03	~ 600
MOURA ^f	$\pm 65,000$	-	$0.85 @ 0.5 Hz$	72	150 x 30 x 15 (s)	0.4	~ 500
RM3100	$\pm 100,000$	40	$0.004 @ 1 Hz$	< 3	25.4 x 25.4 x 9.6 (s+e)	< 0.01	~ 30

^a(Russell et al., 2016), ^b(Dougherty et al., 2004), ^c(Miles et al., 2016), ^d(Brown et al., 2014),

^e(Matandirotya et al., 2013), ^f(Díaz-Michelena et al., 2015), . * Mass only corresponds to the sensor, no electronics.

(s) stands for sensor and (e) stands for electronics board.

The list shown in Table 3 includes two top-class science magnetometers flown on major space missions (Cassini FG and MMS DFG), a recently developed miniaturized fluxgate magnetometer (Miles FG), an AMR-based magnetometer designed for small satellites (MAGIC), a COTS magnetometer (LEMI-011B) and the modified RM3100 magneto-inductive magnetometer.

One factor to take into account when comparing different instruments is the time when instruments were built. Technology advances that happen in less than a decade significantly change the ability to either improve an instrument's overall performance or decrease its size and mass while maintaining a similar performance.

In that sense, the sensors listed in Table 3 cover an extended period of time. Cassini was launched in 1997 and performed its orbit insertion maneuver in 2004. This places the construction of its fluxgate magnetometer (Dougherty et al., 2004) more than

two decades ago. The Magnetospheric Multiscale (MMS) mission (Russell et al., 2016) was launched in 2015 and includes several magnetometers. The characteristics listed in the table correspond to the digital fluxgate. Apart from the differences in design, from Table 3 it can be seen that these two decades allowed for a significant reduction in mass (a factor of 3) and power consumption (more than a factor of 10) while achieving similar noise performances.

- 5 The third sensor in the table (Miles et al., 2016) was developed with the idea of providing a scientific fluxgate small and light enough to be placed on a CubeSat. The reduction in mass, in comparison with the MMS DFG is not significant, but they also designed a low-mass boom. Similarly, the reduction in power consumption is still moderate and the noise floor is significantly higher than that of the Cassini FG or the MMS DFG. However, the fact that a fluxgate magnetometer was specifically designed with the idea of CubeSat missions in mind is a reflection of the attention that small satellite missions are gaining and is an
10 important step towards the further miniaturization and performance improvement of scientific instruments.

The MAGIC sensor (Brown et al., 2014) was built for the TRIO-CINEMA space weather mission, formed of three 3U CubeSats, and has already returned useful scientific data (Archer et al., 2015). The instrument's noise floor is slightly better than that of the Miles FG and presents a small improvement in mass but with a small increase in power consumption. The fact that the mission has already provided in-flight results represents an important advance in the development of science missions
15 based on small satellites.

The LEMI-011B is a commercial fluxgate magnetometer produced by Lviv Institute of Space Research. Although not specifically designed for space science applications, as assessed by Matandirotya et al. (2013), the measurement capabilities, together with the low mass and power consumption, make this a suitable candidate to study some of the ULF waves with largest amplitude (Pc3 to Pc5).

- 20 The MOURA sensor (Díaz-Michelena et al., 2015) was developed to measure the surface magnetic field at Mars as a part of the Mars MetNet Precursor Mission. The instrument's requirements were derived from the specific environment to be encountered at Mars and it makes use of shielded COTS components.

When comparing the different parameters with the RM3100 magnetometer, it can be seen that the main strength of the latter so far is its size, mass, power consumption and cost (about \$30 for the COTS PNI compared to about \$600 for the LEMI-011B
25 and several hundreds of thousands for large-scale mission magnetometers).

Performance measurements such as the noise floor and the resolution can still be improved but already are at a level that would allow the sensor to measure waves in the Pc1 to Pc5 range and represent an improvement with respect to other COTS sensors. In general, this study allowed us to identify weak spots in the design of the RM3100 (the instrument was designed with compass applications in mind) that limit its performance and we are currently working on the development of a new
30 magneto-inductive magnetometer addressing those limitations.

5 Conclusions and current developments

Based on the results presented in this paper and the measurement requirements imposed by the nature of ULF waves, the magneto-inductive technology arises as a promising measurement principle for space- and ground-based platforms to study

DC magnetic fields and magnetospheric waves. Due to the relatively large range of frequencies, the magneto-inductive magnetometer can cover the Pc1 range, something that is often not possible with other types of sensors, needing a separate search coil magnetometer instead, although the sensitivity of search-coils specifically designed for space applications at the frequencies of interest is still orders of magnitude better than the one for the sensor presented in this work.

- 5 The use of COTS components potentially enables future missions throughout the solar system to employ large constellations of CubeSats allowing for rapid multipoint sampling. This approach would greatly aid our understanding of the large-scale dynamics of planetary magnetospheres and how different processes affect different regions in space.

 The magneto-inductive technology, with its small size and weight as well as low power consumption and costs, is a promising candidate for these types of missions. For the same reasons, it could be used to provide an extensive network of autonomous
10 ground-based magnetometers to complement in situ observations. By packaging the sensor together with a power source such as solar panels or a set of batteries, data could be collected over extended periods of time at very low costs. Additionally, it can be operated in extreme polar environments where long winters constrain operations.

 One of the current limitations of the sensor as presented here is the resolution which, without applying oversampling techniques is about 8 nT. While these resolution levels are already sufficient to perform studies of large-scale currents and magne-
15 toospheric waves in the Pc3 to Pc5 range, in general, sub-nT sensitivities would be desired to better measure the small changes in the magnetic field produced by changes in solar wind conditions.

 The noise floor lies at $4 pT/\sqrt{Hz}$ @ 1 Hz, providing excellent performance compared to other sensors, including both commercial (Matandirotya et al., 2013) and specifically developed for small satellite missions (e.g., Miles et al., 2016; Brown et al., 2014).

- 20 In terms of performance, there are a variety of ways to improve the RM3100's capabilities. Currently, development efforts are being carried out at the University of Michigan in order to improve the resolution and noise floor of the sensor by changing different parameters of the basic design such as the clock frequency and its dynamic range. In addition, studies aimed at using different coils are being undertaken as well as the inclusion of several magnetometers in a single board in order to reduce the noise by over-sampling the signals.

- 25 With these changes, we expect the newly developed magnetometer to have sub-nT resolution while maintaining or even reducing the size and mass of the RM3100 used for the tests presented in this paper.

Competing interests. The authors declare that they have no conflict of interest.

Acknowledgements. This work was supported by a NASA Heliophysics Technology and Instrument Development for Science grant (NNX16AH47G) and a NASA Small Spacecraft Technology Program grant (NNX16AT35A).

References

- Ables, S. T. and Fraser, B. J.: Observing the open-closed boundary using cusp-latitude magnetometers, *Geophysical Research Letters*, 32, L10104, <https://doi.org/10.1029/2005GL022824>, 2005.
- Anderson, B. J., Takahashi, K., and Toth, B. A.: Sensing global Birkeland currents with Iridium engineering magnetometer data, *Geophysical Research Letters*, 27, 4045–4048, <https://doi.org/10.1029/2000GL000094>, 2000.
- Archer, M. O., Horbury, T. S., Brown, P., Eastwood, J. P., Oddy, T. M., Whiteside, B. J., and Sample, J. G.: The MAGIC of CIN-EMA: first in-flight science results from a miniaturised anisotropic magnetoresistive magnetometer, *Annales Geophysicae*, 33, 725–735, <https://doi.org/10.5194/angeo-33-725-2015>, 2015.
- Balogh, A., Dunlop, M. W., Cowley, S. W. H., Southwood, D. J., Thomlinson, J. G., Glassmeier, K. H., Musmann, G., Luhr, H., Buchert, S., Acuna, M. H., Fairfield, D. H., Slavin, J. A., Riedler, W., Schwingenschuh, K., and Kivelson, M. G.: The Cluster Magnetic Field Investigation, *Space Science Reviews*, 79, 65–91, <https://doi.org/10.1023/A:1004970907748>, 1997.
- Berube, D., Moldwin, M. B., and Weygand, J. M.: An automated method for the detection of field line resonance frequencies using ground magnetometer techniques, *Journal of Geophysical Research (Space Physics)*, 108, 1348, <https://doi.org/10.1029/2002JA009737>, 2003.
- Brown, P., Whiteside, B. J., Beek, T. J., Fox, P., Horbury, T. S., Oddy, T. M., Archer, M. O., Eastwood, J. P., Sanz-Hernández, D., Sample, J. G., Cupido, E., O’Brien, H., and Carr, C. M.: Space magnetometer based on an anisotropic magnetoresistive hybrid sensor, *Review of Scientific Instruments*, 85, 125 117, <https://doi.org/10.1063/1.4904702>, <http://dx.doi.org/10.1063/1.4904702>, 2014.
- Burch, J. L., Torbert, R. B., Phan, T. D., Chen, L.-J., Moore, T. E., Ergun, R. E., Eastwood, J. P., Gershman, D. J., Cassak, P. A., Argall, M. R., Wang, S., Hesse, M., Pollock, C. J., Giles, B. L., Nakamura, R., Mauk, B. H., Fuselier, S. A., Russell, C. T., Strangeway, R. J., Drake, J. F., Shay, M. A., Khotyaintsev, Y. V., Lindqvist, P.-A., Marklund, G., Wilder, F. D., Young, D. T., Torkar, K., Goldstein, J., Dorelli, J. C., Avannov, L. A., Oka, M., Baker, D. N., Jaynes, A. N., Goodrich, K. A., Cohen, I. J., Turner, D. L., Fennell, J. F., Blake, J. B., Clemmons, J., Goldman, M., Newman, D., Petrinen, S. M., Trattner, K. J., Lavraud, B., Reiff, P. H., Baumjohann, W., Magnes, W., Steller, M., Lewis, W., Saito, Y., Coffey, V., and Chandler, M.: Electron-scale measurements of magnetic reconnection in space, *Science*, 352, aaf2939, <https://doi.org/10.1126/science.aaf2939>, 2016.
- Clausen, L. B. N., Yeoman, T. K., Fear, R. C., Behlke, R., Lucek, E. A., and Engebretson, M. J.: First simultaneous measurements of waves generated at the bow shock in the solar wind, the magnetosphere and on the ground, *Annales Geophysicae*, 27, 357–371, <https://doi.org/10.5194/angeo-27-357-2009>, 2009.
- Constantinescu, O. D., Glassmeier, K.-H., Décréau, P. M. E., Fränz, M., and Fornaçon, K.-H.: Low frequency wave sources in the outer magnetosphere, magnetosheath, and near Earth solar wind, *Annales Geophysicae*, 25, 2217–2228, <https://doi.org/10.5194/angeo-25-2217-2007>, 2007.
- De Laetis, M., Regi, M., Francia, P., Marcucci, M. F., Amata, E., and Pallochia, G.: Solar wind-driven Pc5 waves observed at a polar cap station and in the near cusp ionosphere, *Journal of Geophysical Research (Space Physics)*, 121, 11, <https://doi.org/10.1002/2016JA023477>, 2016.
- Dent, Z. C., Mann, I. R., Goldstein, J., Menk, F. W., and Ozeke, L. G.: Plasmaspheric depletion, refilling, and plasmopause dynamics: A coordinated ground-based and IMAGE satellite study, *Journal of Geophysical Research (Space Physics)*, 111, A03205, <https://doi.org/10.1029/2005JA011046>, 2006.
- Diaz-Michelena, M.: Small Magnetic Sensors for Space Applications, *Sensors*, 9, 2271–2288, <https://doi.org/10.3390/s90402271>, 2009.

- Díaz-Michelena, M., Sanz, R., Cerdán, M. F., and Fernández, A. B.: Calibration of QM-MOURA three-axis magnetometer and gradiometer, *Geoscientific Instrumentation, Methods and Data Systems*, 4, 1–18, <https://doi.org/10.5194/gi-4-1-2015>, 2015.
- Dougherty, M. K., Southwood, S. K. D. J., Balogh, A., Smith, E. J., Tsurutani, B. T., Gerlach, B., Glassmeier, K.-H., Gleim, F., Russell, C. T., Erdos, G., Neubauer, F. M., and Cowley, S. W. H.: The Cassini magnetic field investigation, *Space Science Reviews*, 2004.
- 5 Fish, C. S., Swenson, C. M., Crowley, G., Barjatya, A., Neilsen, T., Gunther, J., Azeem, I., Pilinski, M., Wilder, R., Allen, D., Anderson, M., Bingham, B., Bradford, K., Burr, S., Burt, R., Byers, B., Cook, J., Davis, K., Frazier, C., Grover, S., Hansen, G., Jensen, S., LeBaron, R., Martineau, J., Miller, J., Nelsen, J., Nelson, W., Patterson, P., Stromberg, E., Tran, J., Wassom, S., Weston, C., Whiteley, M., Young, Q., Petersen, J., Schaire, S., Davis, C. R., Bokaie, M., Fullmer, R., Baktur, R., Sojka, J., and Cousins, M.: Design, Development, Implementation, and On-orbit Performance of the Dynamic Ionosphere CubeSat Experiment Mission, *Space Science Reviews*, 181, 61–120, <https://doi.org/10.1007/s11214-014-0034-x>, 2014.
- 10 Fraser, B. J.: ULF Waves: Exploring the Earth’s Magnetosphere, in: *Advances in Geosciences 14*, edited by Ip, W.-H. and Duldig, M., World Scientific, 2007.
- Goel, A., Krishnamoorthy, S., Swenson, T., West, S., Li, A., Crew, A., Phillips, D. J., Screve, A., and Close, S.: Design for CubeSat-based dust and radiation studies at Europa, *Acta Astronautica*, 136, 204–218, <https://doi.org/10.1016/j.actaastro.2017.03.016>, 2017.
- 15 Hamilton, D. C., Gloeckler, G., Ipavich, F. M., Wilken, B., and Stuedemann, W.: Ring current development during the great geomagnetic storm of February 1986, *Journal of Geophysical Research*, 93, 14 343–14 355, <https://doi.org/10.1029/JA093iA12p14343>, 1988.
- Harteringer, M. D., Welling, D., Viall, N. M., Moldwin, M. B., and Ridley, A.: The effect of magnetopause motion on fast mode resonance, *Journal of Geophysical Research (Space Physics)*, 119, 8212–8227, <https://doi.org/10.1002/2014JA020401>, 2014.
- Heilig, B., Lühr, H., and Rother, M.: Comprehensive study of ULF upstream waves observed in the topside ionosphere by CHAMP and on the ground, *Annales Geophysicae*, 25, 737–754, <https://doi.org/10.5194/angeo-25-737-2007>, 2007.
- 20 Heine, T. R. P., Moldwin, M. B., Zou, S., Arlas, J., Desai, A., Heidt, B., McCarty, S., Nastasioiu, A., and Singh, V.: A CubeSat Concept for Multipoint Ionospheric GPS Occultation, *Journal of Small Satellites*, 4, 329–356, 2015.
- Jacobs, J. A., Kato, Y., Matsushita, S., and Troitskaya, V. A.: Classification of Geomagnetic Micropulsations, *Journal of Geophysical Research*, 69, 180–181, <https://doi.org/10.1029/JZ069i001p00180>, 1964.
- 25 Kepko, L. and Le, G.: Magnetospheric Constellation, Tech. rep., NASA Goddard Space Flight Center, 2004.
- Kessel, R. L.: Solar wind excitation of Pc5 fluctuations in the magnetosphere and on the ground, *Journal of Geophysical Research (Space Physics)*, 113, A04202, <https://doi.org/10.1029/2007JA012255>, 2008.
- Kivelson, M. G.: ULF Waves from the Ionosphere to the Outer Planets, in: *Magnetospheric ULF Waves: Synthesis and New Directions*, edited by Takahashi, K., Chi, P. J., Denton, R. E., and Lysak, R. L., Wiley, <https://doi.org/10.1029/169GM04>, 2006.
- 30 Klesh, A., Baker, J., Castillo-Rogez, J., Halatek, L., Murphy, N., Raymond, C., Bellardo, J., Cutler, J., and Lightsey, G.: INSPIRE: Interplanetary NanoSpacecraft Pathfinder In Relevant Environment, in: *AIAA SPACE 2013 Conference and Exposition*, AIAA, <https://doi.org/10.2514/6.2013-5323>, 2013.
- Lepri, S. T., Raines, J. M., Gilbert, J. A., Cutler, J., Panning, M., and Zurbuchen, T. H.: Detecting negative ions on board small satellites, *Journal of Geophysical Research (Space Physics)*, 122, 3961–3971, <https://doi.org/10.1002/2016JA023327>, 2017.
- 35 Leuzinger, A. and Taylor, A.: Magneto-Inductive Technology Overview, Tech. rep., PNI Sensor Corporation, 2010.
- Liemohn, M. W., Kozyra, J. U., Thomsen, M. F., Roeder, J. L., Lu, G., Borovsky, J. E., and Cayton, T. E.: Dominant role of the asymmetric ring current in producing the stormtime Dst, *Journal of Geophysical Research*, 106, 10 883–10 904, <https://doi.org/10.1029/2000JA000326>, 2001.

- Matandirotya, E., Zyl, R. R. V., Gouws, D. J., and Saunderson, E. F.: Evaluation of a Commercial-Off-the-Shelf Fluxgate Magnetometer for CubeSat Space Magnetometry, *Journal of Small Satellites*, 2, 133–146, 2013.
- MEDA: uMAG Series Handheld Fluxgate Magnetometers, <http://www.meda.com/Catalog/umag%20data%20sheet%20rev%20a.pdf>, 2005.
- Menk, F. W.: Magnetospheric ULF Waves: A Review, in: *The Dynamic Magnetosphere*, edited by Liu, W. and Fujimoto, M., Springer, https://doi.org/10.1007/978-94-007-0501-2_13, 2011.
- Menk, F. W., Orr, D., Clilverd, M. A., Smith, A. J., Waters, C. L., Millng, D. K., and Fraser, B. J.: Monitoring spatial and temporal variations in the dayside plasmasphere using geomagnetic field line resonances, *Journal of Geophysical Research*, 104, 19 955–19 970, <https://doi.org/10.1029/1999JA900205>, 1999.
- Miles, D. M., Mann, I. R., Ciurzynski, M., Barona, D., Narod, B. B., Bennest, J. R., Pakhotin, I. P., Kale, A., Bruner, B., Nokes, C. D. A., Cupido, C., Haluza-DeLay, T., Elliott, D. G., and Milling, D. K.: A miniature, low-power scientific fluxgate magnetometer: A stepping-stone to cube-satellite constellation missions, *Journal of Geophysical Research (Space Physics)*, 121, 11, <https://doi.org/10.1002/2016JA023147>, 2016.
- Moldwin, M.: *An Introduction to Space Weather*, Cambridge University Press, <https://doi.org/10.1017/CBO9780511801365>, 2008.
- Moretto, T.: CubeSat Mission to Investigate Ionospheric Irregularities, *Space Weather*, 6, S11002, <https://doi.org/10.1029/2008SW000441>, 2008.
- Ponder, B., Sheinker, A., and Moldwin, M. B.: Using Cellphone Magnetometers for Science on CubeSats, *Journal of Small Satellites*, 5, 449–456, 2016.
- Russell, C. T., Anderson, B. J., Baumjohann, W., Bromund, K. R., Dearborn, D., Fischer, D., Le, G., Leinweber, H. K., Leneman, D., Magnes, W., Means, J. D., Moldwin, M. B., Nakamura, R., Pierce, D., Plaschke, F., Rowe, K. M., Slavin, J. A., Strangeway, R. J., Torbert, R., Hagen, C., Jernej, I., Valavanoglou, A., and Richter, I.: The Magnetospheric Multiscale Magnetometers, *Space Science Reviews*, 199, 189–256, <https://doi.org/10.1007/s11214-014-0057-3>, 2016.
- Shen, X. C., Zong, Q.-G., Shi, Q. Q., Tian, A. M., Sun, W. J., Wang, Y. F., Zhou, X. Z., Fu, S. Y., Hartinger, M. D., and Angelopoulos, V.: Magnetospheric ULF waves with increasing amplitude related to solar wind dynamic pressure changes: The Time History of Events and Macroscale Interactions during Substorms (THEMIS) observations, *Journal of Geophysical Research (Space Physics)*, 120, 7179–7190, <https://doi.org/10.1002/2014JA020913>, 2015.
- Shen, X. C., Shi, Q. Q., Zong, Q.-G., Tian, A. M., Nowada, M., Sun, W. J., Zhao, H. Y., Hudson, M. K., Wang, H. Z., Fu, S. Y., and Pu, Z. Y.: Dayside magnetospheric ULF wave frequency modulated by a solar wind dynamic pressure negative impulse, *Journal of Geophysical Research (Space Physics)*, 122, 1658–1669, <https://doi.org/10.1002/2016JA023351>, 2017.
- Springmann, J. C., Sloboda, A. J., Klesh, A. T., Bennett, M. W., and Cutler, J. W.: The attitude determination system of the RAX satellite, *Acta Astronautica*, 75, 120–135, <https://doi.org/10.1016/j.actaastro.2012.02.001>, 2012.
- Takahashi, K. and Ukhorskiy, A. Y.: Timing analysis of the relationship between solar wind parameters and geosynchronous Pc5 amplitude, *Journal of Geophysical Research (Space Physics)*, 113, A12204, <https://doi.org/10.1029/2008JA013327>, 2008.
- Takahashi, K., McPherron, R. L., and Terasawa, T.: Dependence of the spectrum of Pc 3–4 pulsations on the interplanetary magnetic field, *Journal of Geophysical Research*, 89, 2770–2780, <https://doi.org/10.1029/JA089iA05p02770>, 1984.
- Takahashi, K., Ohtani, S.-I., Denton, R. E., Hughes, W. J., and Anderson, R. R.: Ion composition in the plasma trough and plasma plume derived from a Combined Release and Radiation Effects Satellite magnetoseismic study, *Journal of Geophysical Research (Space Physics)*, 113, A12203, <https://doi.org/10.1029/2008JA013248>, 2008.

Takahashi, K., Hartinger, M. D., Malaspina, D. M., Smith, C. W., Koga, K., Singer, H. J., Frühauff, D., Baishev, D. G., Moiseev, A. V., and Yoshikawa, A.: Propagation of ULF waves from the upstream region to the midnight sector of the inner magnetosphere, *Journal of Geophysical Research (Space Physics)*, 121, 8428–8447, <https://doi.org/10.1002/2016JA022958>, 2016.

Zurbuchen, T. H., Lal, B., Castillo-Rogez, J., Clegg, A., Lozano, P., Macdonald, M., Millan, R., Norton, C. D., Swartz, W. H., Title, A. M.,

- 5 Woods, T. N., Wright, E. L., and Young, A. T.: Achieving Science with CubeSats: Thinking Inside the Box, Tech. rep., National Academies of Sciences, Engineering, and Medicine, <https://doi.org/10.17226/23503>, 2016.