

Author comments to referee 1 (John R. Gray) comments on “An autonomous and low-power instrument platform for monitoring water and solid discharges in mesoscale rivers” by Nord et al.

In the following, the reviewer comments appear in black italic and our answers are provided in blue. When there are quotations from the text of the article, they appear in quotation marks and the new or corrected parts are highlighted in yellow.

[gi-2019-33-RC1.pdf](#)

This is John R. Gray, peer reviewer of the subject manuscript, submitting the results of my review by:

- 1. Checking boxes on this website, and*
- 2. Submitting a 7-page .pdf file that summarizes my NON-anonymous as a "supplement" on this website.*

I debated selecting "accept as is," but figured there are minor issues that the authors might opt to address that could result in changes to the paper.

Please let me know if all of this information was not captured. Thanks for the opportunity to review this excellent paper. John

Please also note the supplement to this comment:

<https://www.geosci-instrum-method-data-syst-discuss.net/gi-2019-33/gi-2019-33-RC1-supplement.pdf>

Answer: we sincerely thank John R. Gray for his very careful review of this paper. We acknowledge his extensive experience in measuring liquid and solid fluxes (fine and coarse sediments) in rivers. We have tried to take his considerations into account as much as possible. We have replied below to his comments

[gi-2019-33-RC1-supplement.pdf](#)

Thanks for the opportunity to review this manuscript on a subject Near and Dear to My Professional Heart. As the National Sedimentologist in the U.S. Geological Survey's (USGS) Office of Surface Water (1996-2014), my primary objective was to abet and augment the development of surrogate technologies for monitoring fluvial sediment and sorbed-constituent fluxes. In the 1990s, my then-USGS colleague Randy Parker suggested formulation of a "Sediment-Superga(u)ge Network" that would combine collection of hydrological data at a number of river sites, each using traditional and surrogate monitoring methods. A "Sediment Monitoring Instrumentation and Analysis Research Program (SMIARP)" among several U.S. Federal Agencies that encapsulated the Supergage concept ensued (Gray and Glysson, 2003; Gray, 2005). The RIPLE concept is a most-welcome and promising extension to the "Supergage" concept.

I have completed the on-line evaluation of the manuscript. As is my professional habit of 40+ years, I provide "Notable Observations and Considerations" before sharing my detailed review comments per page/line numbers. These are followed by my "references cited," which are provided solely for your information with neither an explicit nor implicit "requirement" for your use or even review.

Aside...the review format greatly facilitated my review. Kudos to the editor et al.

Do not hesitate to follow up directly with me with respect to my review comments at GraySedimentology@gmail.com.

Without further ado...

Answer: once again, we thank John R. Gray for his professionalism and insightful comments. We also thank him for the bibliographical references that include the direct links to the related documents. We respond to the Notable Observations and Considerations in the next section and to the detailed review comments thereafter.

NOTABLE OBSERVATIONS AND CONSIDERATIONS

1. First and foremost, it is evident that this the RIPLE project was thoughtfully conceived and carefully developed. The authors are commended for their obvious in-depth knowledge of sedimentology, inventiveness, writing, and exposition skills.

Answer: we are pleased that the development of this platform meets with the current quality standards of the scientific community and more specifically in the field of sedimentology.

As cited in the text, the development of this platform was possible thanks to a fifteen-year expertise in hydrometric and sediment measurements within the IGE laboratory and more broadly within the research laboratories in the Grenoble and Lyon communities and local companies such as EDF. This work was supported by the EQUIPEX CRITEX project (grant no. ANR-11-EQPX-0011, PIs J. Gaillardet and L. Longuevergne) whose main objective was to build a national park of instruments for the study of the Critical Zone (<https://www.critex.fr/>). Yoann Michielin benefited from an engineer contract (1.5 years) from the CRITEX project to develop the RIPLE platform.

2. The figures, particularly the photographs, are top-notch. The project sites are neat, and the beauty of the surrounding area(s) is stunning. I suggest all authors decline compensation for this effort due to the stunning work environment and ability to have so much fun on-the-job. Seriously?

Answer: It is true that we work in a very pleasant environment. The measurement sites we usually follow are located in south-eastern France (Nord et al., 2017; Esteves et al., 2019), mountain regions subject to Mediterranean influences where erosion is significant. This aesthetic environment makes it possible to compensate for the efforts and sometimes the ingratitude involved in monitoring these morphologically active and very dynamic rivers.

3. One important concept of the Sediment Monitoring Instrument and Analysis Program (SMIARP, see later) is the key requirement for ground-truth data to be obtained concurrently with surrogate data. If this theme appears in the paper, I've missed it. The importance of ground-truth data can't be overstated for current calibration purposes, and for historical-to-present-to-future comparisons of

datasets obtained using different technologies. There are examples of major 'breaks' in sediment transport in the USA that were subsequently determined to spurious artifacts of the data-collection process (instruments and/or methods).

Answer: For suspended sediment monitoring, we systematically take water samples during floods to measure directly the suspended sediment concentration (SSC) and establish turbidity-SSC relations. Therefore, there are ground-truth data. This is fundamental in these mesoscale rivers where the nature of the transported materials varies greatly depending on the sources of erosion activated within the watershed. Indeed turbidity-SSC relations are particularly sensitive to the size of the materials transported and can change from one flood to another or even during a flood. In addition, the characterization of the sediment settling velocity using SCAF (sediment settling velocity characterization device) is carried out in situ, directly after sampling, to avoid flocculation/disaggregation problems that may occur later and the inconvenience of sub-sampling.

We believe that the comment of the referee refers to flow discharge measurements (gauging) on the one hand and direct measurements of bed load fluxes on the other. Concerning flow discharge measurements, our publications (e.g. Nord et al., 2017; Esteves et al., 2019) show that we have spent a lot of time and energy carrying out gauging, including during floods. This involves measurements by portable SVR, LSPIV, dilution method, current meter taking into account that the sites are remote from the lab (2 or 3 hour drive) and subject to with very short hydrological reactions. We continue these measurements regularly at our sites. However, we recognize that it is almost impossible to maintain traditional stage-discharge rating curves in very morphologically active rivers. This is why we have been interested in developing almost direct flow discharge estimation methods in recent years (Tafasca, 2017; Hasanyar, 2019).

With regard to bed load fluxes measurements, we recognize that they have not been performed yet for the sites presented in this study. We are considering carrying out some measurement campaigns by mobile bag samplers but the success is very uncertain on this very turbulent and dynamic type of river. Direct monitoring of bed load fluxes is not included in the RIPLE platform since there is no method that can be applied in mesoscale rivers. There have indeed been attempts to monitor bedload fluxes by direct methods in our immediate environment, but limited to small rivers (Liebault et al., 2016). Within the Draix observatory, a monitoring of total event bed load yield is carried out (Mathys, 2006) by emptying sediment traps, but once again, this is not possible for mesoscale rivers. The passive hydro-acoustic method integrated into the RIPLE platform has been verified against alternative methods or ground-truth data at other sites (Geay et al., 2017a; Geay et al., 2017b). More recently, we have complemented the monitoring by passive seismic at RIPLE sites. To date, our objective is not to produce an estimation of bedload fluxes but rather to be able to say whether or not there is bedload transport and possibly to characterize a level of amplitude of the phenomenon.

4. I was pleased to see uncertainty estimates included with most of the parameters being measured.

Answer: we agree with this comment.

5. Turbidity monitoring may be useful, but eventually one should consider including (an admittedly expensive but quite useful) subaqueous laser device for SSC AND particle-size distributions determined volumetrically. See the LISST-100X (or newer version) by Sequoia Scientific Inc., Bellevue, Washington,

USA. I am not a fan of turbidity as a suspended-sediment concentration (SSC) surrogate even if I am a co-author of the 2009 USGS "turbidity guidelines."

Answer: We did consider this technology. However, the LIST is not suitable for rivers with SSC values typically higher than a few g/l. Moreover, the SCAF device was developed to meet metrological needs in rivers with high SSC values. We know that there has been an attempt to develop a sub-sampling system to carry out in situ monitoring with a LIST in a tropical river with high SSC values during floods (Lajeunesse et al., 2018). However, such a system has not been industrialized and is relatively heavy in maintenance. As soon as there is a validated and available system, we will be ready to integrate it into the RIPLE platform.

6. For SSC values exceeding ~20 g/L, and particularly for hyperconcentrated streamflows, consider the ~simple and ~inexpensive densimetric technique (Brown and others, 2015).

Answer: we thank John R. Gray for this information and the corresponding reference. It is a technology we should test in the future. The only limitation we see is that it does not allow low SSC to be measured. This means that several measurement systems are required to cover the entire SSC range and then combine the different measurements.

In the site where RIPLE is currently installed (Galabre), SSC values can reach typically several tens of g/l. The commercial turbidimeters we have selected, which operate in backscattering (MJK Susix or previously WTW Visolid 700 IQ), are designed to operate in high SSC ranges. Our experience is more limited for the MJK Susix model but the WTW Visolid 700 IQ model has given good results for SSC of more than 100 g/l (see fig.3 Navratil et al., 2011). This allows us to have continuous timeseries of turbidity using a single instrument for both low and high SSC values. We recognise that it is still necessary to take automatic samples to calibrate the turbidity-SSC relations.

It should also be noted that the so-called "capteur marseillais" turbidimeter, integrated into the RIPLE platform, was originally designed for very high SSC ranges. It has been operating in Draix since 1994 and has measured turbidity for SSC above 500 g/l (Bergougnoux et al., 1998).

7. For bedload monitoring, it would be appropriate to state that passive hydroacoustics are relevant "only to gravel-bedload transport," if it can't be proven otherwise (wasn't so a decade ago...see Gray and others, 2010),.

Answer: Indeed, hydrophones have been mostly tested in gravel-bed rivers. This statement has been precised (3/30) as follows: "The acoustic power of bedload sounds has been related to bedload fluxes by using site-specific calibration curves **in gravel-bed rivers**". However, we shall mention that Thorne used hydrophones for monitoring the bedload transport of sand in marine environment [Diameters>0.1 mm]. See for example a review of his work (Thorne, 2014). If this is theoretically possible to record the sound generated by sand impacts, it is however limited by the type of river in which the measurements are done. Indeed, sand impacts generates high frequency sounds. This high frequency sounds do not propagate in all rivers, high frequency sounds are heavily attenuated in steep rivers (see Geay et al., 2019). However, in sand rivers or marine environment, the sound of sand particles can be used to monitor bedload transport. Finally, we can not state that the use of hydrophones is "largely limited" to gravel-bed rivers.

8. Much of the “spec”-type information was tedious. Table 2 captures the “power balance,” but I wonder if information on uncertainties, etc. might be included in yet another table?

Answer: we could add a Table with the uncertainties of the sensors already mentioned in the text but we are not convinced of the added-value of this Table. Indeed, the actual uncertainty, in the case of a sensor installed in the field, is often much higher than the uncertainty value given by the manufacturer which corresponds to an idealized situation. In the field, there are many other sources of uncertainty that should be taken into account and this requires a specific work.

DETAILS, DETAILS

1-10: Suggest that the acronym “RIPLE” instead be spelled out and followed by (RIPLE) in the abstract.

Answer: Yes thanks, it's a mistake on our part. This has been corrected in the abstract.

1-13: Terms such as “mesoscale” (somewhat defined on page 16-2 as having depths <5m), “fine” and “coarse” sediment (some consider the division at 0.062 mm, some at 2 mm), etc. would benefit from (more-or-less) precise definition.

Answer: By mesoscale rivers, we refer to rivers which drain mesoscale catchments, i.e. from 10 to 1000 km² (Singh et al., 2018). It is true that this information was not specified in the text. This has been added at the end of the first sentence of the abstract.

In this study, the boundary between fine and coarse sediments, which also applies to distinguish between suspended and bedload transport, refers to sand-sized particles. This limit, arbitrarily fixed around 2 mm, is explained by the fact that the suction velocity of the automatic sampler is 0.58 m/s for a suction height of 4.6 m (data provided by ISCO for the 3700 model), which does not allow to collect particles coarser than a few millimeters. We sometimes find sand-sized particles in river samples, but they are rare. Representative sampling of sand-sized particles remains a very topical and unresolved issue to date. We have added this sentence in the introduction: “In this study, suspension load applies for particles finer than 2 mm.”

1-16: Hydrophones...no mention of the bed type in which this technology is applicable. Unless times have changed, use of hydrophones (and geophones) is largely limited to gravel-bed rivers. If so, it would be appropriate to delimit the use of the hydrophones in the text.

Answer: See our response to comment 7 in “notable observations and considerations”.

1-18: I am a Big Fan of “robustness,” even if some accuracy is lost. However, regarding accuracy, most of the RIPLE sub-technologies are qualified by uncertainty values. This is a practical and tractable approach, with which I concur.

Answer: we agree with this comment.

2-15: A good reference on “persistent turbidity” is available in USGS SIR 2007-5178, “Major Turbidity Events in the North Santiam River Basin, Oregon, Water Years 1999–2004” (<https://pubs.usgs.gov/sir/2007/5178/index.html>).

Answer: we agree with this comment. This reference has been added to the text.

2-31: Fluxes are “estimated” or “computed,” no? I.e., “Estimates of suspended-sediment flux are usually obtained...”

Answer: ok, the sentence has been corrected as followed: “Estimates of suspended sediment flux are usually obtained by multiplying the water discharge by the SSC...”

3-1: “...method to obtain ...SSC measurement...is not currently available.” Advances in hydroacoustic determinations of sediment fluxes have gained considerable traction in the USA. I can provide several references upon request.

Answer: We are aware that hydroacoustic is one of the tools that will make possible in the coming years to estimate sediment fluxes by class of particle size thanks to the use of multi-frequency technology. In fact, we had considered integrating the Aquascat instrument (by Aquatec) into the RIPLE platform (see Table 2). However, at present, to the best of our knowledge (Thorne and Hurther, 2014; Vergne et al., 2017), it is still necessary to develop theoretical bases to inverse the acoustic signal under natural flow conditions with a wide range of particle sizes of non-spherical shape and in the presence of air bubbles. As soon as the theoretical framework allows this type of instrument to be used routinely in rivers, we will integrate hydroacoustic into RIPLE for sediment fluxes estimation. Nevertheless, we are interested in the references that can be provided by the referee.

3-4/5: I have measured many turbulent rivers and have often found substantial cross-sectional and vertical gradients in SSC. A not-best example of this can be found in figures 3 and 4 in Gray and O’Halloran (2015) (I can provide more dramatic horizontal gradients, and many examples of vertical gradients if pressed).

Answer: We recognize that the spatial distributions of SSC across the cross section of the river may be heterogeneous in some cases. However, we hypothesize that in mountainous mesoscale rivers where the bed slope is greater than 0.1% and where the turbulence generated during floods is sufficiently high, the spatial distribution of SSC is relatively homogeneous. This hypothesis was partially validated by Mano (2008) during his PhD on the Isère river in Grenoble using manual samples during a hydraulic dam flushing and for SSC values of a few g/l. It is true that this question of the spatial distribution of SSC across the section remains a scientific issue, particularly in rivers where the SSC is greater than a few g/l. This issue will remain a barrier until we have the means to spatially sample suspended sediment fluxes. Hydroacoustic will be able to provide some keys to these locks but probably not in the case of high SSC values (due to potential attenuation) and in rivers subjected to flash floods with damaging impact.

3-10/11: Can reference American Society for Testing and Materials, 2000, Standard test methods for determining sediment concentration in water samples: D 3977-97, vol. 11.02, Water (II) 395-400. I have a copy of this standard.

Answer: we agree with this comment. We added the following reference in the text: "International Organization for Standardization, 2005: Liquid flow measurement in open channels – Sediment in streams and canals — Determination of concentration, particle size distribution and relative density. ISO 4365, Geneva."

3-15: Concur.

Answer: no comment.

3-19: No hyphen is needed after "hydraulically" given that it is an adverb and can only refer to "based." Picky, aren't I...?!

Answer: Yes, thanks for that precision. The correction has been made in the text.

4-5: Might considering starting sentence with, "Knowledge...essential for..."

Answer: OK, thanks for the proposition. The sentence was corrected as follows: "Knowledge of water discharge is essential whether it is for estimating suspended sediment fluxes, dissolved matter fluxes, nutrient or contaminant fluxes associated with fine particles."

4-8: "hysteretic" might be favored (more descriptive) over "dynamic."

Answer: OK, thanks for the proposition. The sentence has been corrected as follows: "... solid discharges can demonstrate a hysteretic and transitory behavior, more impulsive than the flow itself, ..."

4-14: "substantial" might be favored over "significant." I try to limit the use of the latter to statistics.

Answer: "significant" was replaced by "substantial".

4-20++: Believe more paragraph breaks would benefit the paper here and elsewhere. I'd be glad to suggest where to insert paragraph breaks upon request, but I'm confident the authors can attend to this on their own.

Answer: OK, a paragraph break has been added. A new paragraph starts with: "The first variable that has been added to hydrometric stations is velocity."

Elsewhere in the text, there are paragraph breaks that may not be visible because there is no line break. This has been fixed.

5-11: "...but little or none for monitoring..."?

Answer: Thanks, this has been corrected in the text.

5-20: Suggest express units either as l/s or as m³/s.

Answer: we agree with this comment. "(from a few dozen l/s to several hundred of m³/s)" has been replaced by "(from 10⁻² to 10² m³/s)".

5-23: Suggest "...commercially available equipment..." instead of "...company equipment..."

Answer: thanks. "company equipment" has been replaced by "commercially available equipment".

5-25/6: aDcps, if considered non-intrusive, arguably qualify as "existing to monitor SSC."

Answer: We do not consider aDcp as a non-intrusive device available to monitor SSC. Furthermore, we justify the choice not to use aDcp for different reasons:

- moving-boat aDcp is difficult to consider for monitoring. Moreover application of moving-boat aDcps to steep rivers (slope >1%) during flood is not feasible due to waves on the water surface that prevent the permanent contact of the aDcp with the water surface and due to floating debris.

- alternatively V-aDcps such as the Sontek IQ Plus (see Table 2) can be integrated in the RIPLE platform. This was done in the Claduègne river by Nord et al. (2017). Such device, which is fixed to the bottom of the river, can be used to monitor velocity profile in a specific vertical of the cross section. However it is an intrusive instrument and its installation is hazardous depending on the type of river. Furthermore, this model does not provide the backscattered intensity, which is necessary to derive SSC.

- signal attenuation may be strong when SSC values are high (typically higher than a few g/l), which may prevent to estimate velocity and SSC (Nord et al., 2014).

5-30/1: Suggest, "All 'recording' instruments should be controlled..." but upon reflection a few days later, ignore this suggestion, given the impossibility of controlling non-recording equipment remotely...?!

Answer: no comment.

6/1-4: See "Sediment Monitoring Instrument and Analysis Program (SMIARP)" entry under "notable comments."

Answer: See our response to comment 3 in "notable observations and considerations".

6/4: Table 1, very informative/good.

Answer: OK, thanks.

6/18 (also 12/27): I was a peer reviewer for the PASS sampler paper. Very useful device; I recommended its acceptance after several back-and-forths with the principal author (Nic a very good scientist). However, the PASS technology as originally published doesn't provide information that would enable reliable flux estimates of suspended-sediment transport.

Answer: we agree with this comment.

6/29: Appendix A is succinct and quite informative. I am impressed.

Answer: OK, thanks.

6/31: 10-minute data-measurement/recording interval: My experience indicates that this should be fine even if the rising phase of the hydrograph might be less than an hour in duration (?) for a "mesoscale river."

Answer: we agree with this comment. The rising phase can be very fast (typically one hour) in steep rivers that give rise to flash floods. The 10-minute time step is a good compromise between representative sampling and the time required to scan all instruments integrated in RIPLE.

6/31-2: Data are plural...as you indicate in 15/8... Elsewhere the verb is correctly plural. Picky reviewer?!

Answer: OK, thanks for your correction. The text has been changed accordingly.

7/11: I smiled at power consumption "estimate" of 7,758 mA.h/day. Are four significant figures for an estimate appropriate, even if it is mathematically (excruciatingly) correct...? But overall the power-consumption considerations and calculations are Far More Involved than I ever performed at any of my gauges. I just tried to "overpower" them...! Well done.

Answer: we agree with this comment but this does not seem problematic to us since the power consumptions are expressed in mA.h/day.

7/24: Excellent table 1 and figure 2. Your efforts on figures make what otherwise would be a "dry" paper easier and more enjoyable to review.

Answer: OK, thanks.

7/27: At first, I was unsure whether this was an aerial or subaqueous camera. Easily discerned, but might be useful to start sentence with "The aerial control camera..." Suite yourselves.

Answer: OK, the word "aerial" was added to the sentence.

8/30: Index velocity range is given, but value(s) used not so. Would it not be desirable to define “them” empirically with, say, a manually deployed aDcp? USGS has guidelines on the index-velocity method.

Answer: we understand the comment of the reviewer. The procedure indicated in the text is very generic. The values of the coefficient that links the average velocity in a vertical to the corresponding surface velocity are taken from the literature. We are aware that it is preferable to apply the USGS guidelines. This was actually done in our cases of application (Nord et al., 2014; Tafasca, 2017) where aDcp or current meter gaugings were available.

The sentence was complemented as follows: “A transect of surface velocity along the cross section of the river is extracted and converted to a transect of depth averaged velocity over the vertical using a coefficient that relates the depth averaged velocity to the surface velocity. Such coefficient commonly ranges between 0.75 and 0.85 (Hauet et al., 2008; Le Coz et al., 2010; Welber et al., 2016) but it is preferable to define it from aDcp or current meter measurements.”

9/1: Wholeheartedly concur.

Answer: OK, no comment.

9/2: As I’ve aged (regrettably, I have considerable experience in that process), I’ve shied away from gender-specific references whenever possible. Instead of “manpower” I refer to “human resources.” Yes, I know this is politically correct, but I’m the reviewer and that’s what I wrote...

Answer: Yes, that is a very good point. “Manpower” has been replaced by “human resources” in the text.

9/6: Another foible, the USGS, for which I worked 37 years, mandates “relation” when used in scientific comparisons, and “relationship” to what I have with my wife, kids and grandson (born on October 26, 2019, I’m a rookie grandfather...). You of course aren’t bound by USGS rules.

Answer: it is noted. “Relationship” has been replaced by “relation”.

9/8: Reference is made to “...lack of brightness...” but I do not recall any reference to/caveats associated with “night monitoring.” If this observation is correct and that some of the data could only be obtained half-the-time, it should be stated so. Perhaps in abstract and in body of text.

Answer: The control camera is only activated during day time. We have completed the following sentence: “The triggering of the acquisition is programmed as follows: (i) the camera is started by the data logger only during day time via the electrical relay (typically once an hour)”

On the other hand, The LSPIV camera, is activated when triggering conditions of turbidity and water levels are overcome. For the sequences acquired during the night, an IR projector housed into the camera is used. However, the effectiveness of this projector depends on the distance between the camera and the river section. It is specified on page/line 10/9 that “primarily tests have shown that the projector is not powerful enough to illuminate up to the water surface.” Future camera models or the use of independent IR projectors may improve this point. In the meantime, sequences

acquired during the night or in low light conditions are not used for LSPIV analysis. That is why the term “lack of brightness” was mentioned on page/line 9/8 for the manual selection of the video sequences to be used for LSPIV analyses.

9/15: I found in the USGS “supergage” program that costs associated with human resources (!) required to operate and post-process surrogate data far outweighed capital costs of instruments. In fact, I called this my “Trojan Horse” project: I’d give instruments to eager-if-unsuspecting field folks who only later realized the extent of their commitment...! However, as time went on and the instruments were “figured out,” such time commitments (and costs) diminished substantially.

Answer: We fully agree with this comment. The monitoring of hydrometric variables is very time-consuming. Despite the automation of measurements, it is still necessary to visit the monitoring sites regularly, for example to check the state of the sensors, clean the sensors, adapt their position to the morphological changes in the bed...

10/15: Laser inclined upstream or downstream? And in a fixed position?

Answer: We are not very sure of the object to which this comment refers because the line indicated does not seem appropriate but we think that the reviewer refers to the surface velocity radar. The manufacturer recommends an orientation of the radar towards upstream, but this is not always optimal depending on the study sites. We have several times considered that the hydraulic conditions were more favorable by looking at downstream and this did not affect the quality of the measurements. On the other hand, the radar must be fixed and its position must remain unchanged over time.

11/13: Radar, good.

Answer: OK, no comment.

11/14: Electrical conductivity versus Specific Conductivity: The latter is the “common” language, is indexed to a cm width of river water at 25 C (I recall).

Answer: We are not specialists in this measurement. The information provided in the article comes from the technical documentation of the selected instrument. We prefer to leave the text as it is.

12/21: Time averaged data for QW parameters is a good idea. Maybe not so for some physical parameters. I can explain if needed.

Answer: We average the physical and chemical parameters over a short period of time, typically 30 s or less. A large number of measurements are made during this period at frequency ≥ 1 Hz and these measurements are finally averaged. This method avoids to be affected by turbulent fluctuations.

12/30: Suggest use, "including..." instead of ending sentence with "..."

Answer: OK thanks, this has been corrected in the text as follows: "... for all subsequent analyses of dissolved and particulate phases including major ions, nutrients, contaminants, microorganisms, DNA."

13/8: Use of strainer good idea (a lesson I learned the hard way).

Answer: Yes, this is recommended by the manufacturer and it is true that it prevents clogging the pipe that brings water to the pump of the sampler.

13/21++: Two turbidimeters at low and high range, very wise. However, I'm not a fan of turbidity to infer SSC even if I co-authored the "Rasmussen et al. (2009)" paper which we refer to as the USGS "turbidity protocol for estimating SSC." See "notable comment" on (expensive) alternative.

Answer: We explained the principle and the motivation of our approach in the response to the comment 6 in "notable observations and considerations".

13/25: See "notable comments" on densimetric technique for high/hyperconcentrated streamflow SSC determinations.

Answer: See the response to the comment 6 in "notable observations and considerations".

15/3: Instead of "allows," perhaps "enables?"

Answer: Yes, thanks. This has been corrected in the text as follows: "The device enables to measure the temporal evolution..."

15/5+: Suspended solids vs SSC: I avoid the former unless the metric is Total Suspended Solids (TSS), which I studied 2 decades ago and declared fundamentally unreliable. See Gray et al. 2000 and other papers that "condemn" TSS data.

Answer: thanks for the reference. Here the comment between SSC and TSS does not really apply because SCAF enables to measure a settling velocity distribution but not a particle size distribution. Nevertheless, we propose to replace "suspended solids" with "suspended sediment".

15/8: SCAF is a very neat innovation. Congratulations. It in itself (with calibrating data) worth a paper?

Answer: thanks. Yes, a paper will be published as soon as we have enough data including samples collected during floods.

15/27: *Echo-sounder is at-a-point...?*

Answer: Yes, as written on page/line 15/25, the echo-sounder is installed at a fixed point, usually a river bank or a bridge pier, with the sensor tilt with an angle of less than 25° from the vertical axis oriented towards the center of the river. It measures the evolution of the level of the river bed at a point of the cross section.

17++ *I neither reviewed "data transfer" nor "visualization" closely, as I wouldn't have much to add given you're far ahead of me on these (and certainly other) topic(s).*

Answer: OK, no comment.

22/7: *"Sites" or "gauges" on two rivers?*

Answer: OK, the text was changed as follows: "To date, RIPLE platform has been tested on **two river sites located in the French Alps...**".

It was already specified in the text that the first site was previously gauged since there was an existing hydrometric station managed by the Electricité De France (EDF) company (22/12). On the other hand, it has been added that the second site was ungauged before the installation of RIPLE: "The second site corresponds to **an ungauged site located in** a more pristine river in the Southern Alps where sediment loads can be high..."

23/11: *My Ph.D. dissertation was on "calibration coefficients for 4 pressure-difference bedload samplers." I am keenly interested in using surrogate bedload data, but first things first (in USA, anyway) is to make sure we know trapping efficiencies of our ground-truth instruments. I found that some pressure-difference bedload samplers had substantially super-efficient trapping coefficients.*

Answer: Trapping efficiency of pressure-difference bedload samplers is a very difficult question to raise. Determining the efficiency of a particular sampler deployed in a particular river is very difficult as the number of parameters influencing the measurements are high (bag clogging, position of sampler on a rough river-bed, size of sampler mouth versus bedload grain sizes, hydraulic efficiency...). It is indeed necessary to develop knowledge, share good practices on the use of these devices. However, the use of surrogate methods has to be considered as a step toward new data that are very difficult to obtain with sampling methods (such as continuous monitoring with remote transmission). Of course, validation of these surrogate methods have to be done. They will be continued by using "ground-truth" instruments.

23/26: *Dissolved Oxygen is (now) easily measured by luminescence technique, but of course its relevance is suspect-at-best in most non-tidal rivers.*

Answer: yes, that is a good idea. We could easily add such an oxygen sensor in the future to RIPLE.

24/6: Aquatic drone. Sounds neat, but how to use? I'm a rapt observer...

Answer: Images and videos illustrating the use of the aquatic drone are available on the website of the company that manufactures the drone: <http://riverdrone.fr/>.

Instruments such as echo-sounder, turbidimeter, aDcp, hydrophone can be embarked on the aquatic drone to obtain spatialized measurements and to carry out profiles across or along the river.

References

- Bergougnoux L., Misguich-Ripault J., and Firpo J-L: Characterization of an optical fiber bundle sensor, *Rev. Sci. Instrum.* 69, 1985-1990, 1998.
- Esteves, M., Legout, C., Navratil, O., and Evrard, O.: Medium term high frequency observation of discharges and suspended sediment in a Mediterranean mountainous catchment, *Journal of Hydrology*, 568, 562-574, <https://doi.org/10.1016/j.jhydrol.2018.10.066>, 2019.
- Geay, T., Belleudy, P., Gervaise, C., Habersack, H., Aigner, J., Kreisler, A., Seitz, H. and Laronne, J. B.: Passive acoustic monitoring of bed load discharge in a large gravel bed river, *J. Geophys. Res. Earth Surf.*, 21, <https://doi.org/10.1002/2016JF004112>, 2017a.
- Geay, T., Belleudy, P., Laronne, J. B., Camenen, B., and Gervaise, C.: Spectral variations of underwater river sounds, *Earth Surf. Proc. Land.*, 42, 2447–2456, <https://doi.org/10.1002/esp.4208>, 2017b.
- Geay, T., L. Michel, S. Zanker, and J. R. Rigby (2019), Acoustic wave propagation in rivers: an experimental study, *Earth Surf. Dyn.*, 7(2), 537–548, doi:10.5194/esurf-7-537-2019.
- Lajeunesse, E., Delacourt, C., Allemand, P., Limare, A., Dessert, C., Ammann, J., Grandjean, P., Monitoring riverine sediment fluxes during floods : new tools and methods. <https://hal.archives-ouvertes.fr/hal-01917118/document>
- Liébault, F., Jantzi, H., Klotz, S., Laronne, J.B., Recking, A., 2016. Bedload monitoring under conditions of ultra-high suspended sediment concentrations. *J. Hydrol.* 540, 947–958. <https://doi.org/10.1016/j.jhydrol.2016.07.014>.
- Mano, V. : Processus fondamentaux conditionnant les apports de sédiments fins dans les retenues - optimisation des méthodes de mesure et modélisation statistique, Ph.D. thesis, Université Joseph-Fourier, 2008. Available at <https://tel.archives-ouvertes.fr/tel-00365349> (tested on 02/10/2019).
- Masihullah H. (2019). Estimation of flow discharge by non-contact measurements. Master 2, Hydraulics and Civil Engineering, ENSE3, G-INP.
- Mathys, N. (2006). Analyse et modélisation à différentes échelles des mécanismes d'érosion et de transport de matériaux solides : cas des petits bassins versants de montagne sur marne (Draix, Alpes-de-Haute-Provence), PhD thesis, Université Joseph Fourier, France.
- Navratil, O., Esteves, M., Legout, C., Gratiot, N., Némery, J., Willmore, S., and Grangeon, T.: Global uncertainty analysis of suspended sediment monitoring using turbidimeter in a small mountainous river catchment, *J. Hydrol.*, 398, 246–259, <https://doi.org/10.1016/j.jhydrol.2010.12.025>, 2011.
- Nord, G., Gallart, F., Gratiot, N., Soler, M., Reid, I., Vachtman, D., Latron, J., Martín Vide, J. P., and Laronne, J. B.: Applicability of acoustic Doppler devices for flow velocity measurements and discharge estimation in flows with sediment transport, *J. Hydrol.*, 509, 504–518, <https://doi.org/doi:10.1016/j.jhydrol.2013.11.020>, 2014.
- Nord, G., Boudevillain, B., Berne, A., Branger, F., Braud, I., Dramais, G., Gérard, S., Le Coz, J., Legoût, C., Molinié, G., Van Baelen, J., Vandervaere, J.-P., Andrieu, J., Aubert, C., Cialianno, M., Delrieu, G., Grazioli, J., Hachani, S., Horner, I., Huza, J., Le Boursicaud, R., Raupach, T. H., Teuling, A. J., Uber, M., Vincendon, B., and Wijbrans, A. (2017) A high space–time resolution dataset linking meteorological forcing and hydro-sedimentary response in a mesoscale Mediterranean catchment (Auzon) of the Ardèche region, France, *Earth Syst. Sci. Data*, 9, 221-249, <http://dx.doi.org/10.5194/essd-9-221-2017>.
- Singh, S.K., and Stenger, R.: Indirect Methods to Elucidate Water Flows and Contaminant Transfer Pathways through Meso-scale Catchments – a Review, *Environ. Process.* (2018) 5: 683. <https://doi.org/10.1007/s40710-018-0331-6>
- Tafasca S. (2017). Use of velocity measurement to improve flow discharge estimation in a mountain stream. Master 2, Hydraulics and Civil Engineering, ENSE3, G-INP.
- Thorne, P. D. (2014), An overview of underwater sound generated by interparticle collisions and its application to the measurements of coarse sediment bedload transport, *Earth Surf. Dyn.*, 2(2), 531–543, doi:10.5194/esurf-2-531-2014.

P. D. Thorne, D. Hurther, An overview on the use of backscattered sound for measuring suspended particle size and concentration profiles in non-cohesive inorganic sediment transport, *Continental Shelf Research*, 73, pp. 97-118, 2014.

A. Vergne, C. Berni, J. Le Coz. Acoustic measurement of suspended sediments in rivers: potential impact of air micro-bubbles?. *Underwater Acoustics Conference and Exhibition 2017*, Sep 2017, Skiathos, Greece. pp.749-754. <https://hal.archives-ouvertes.fr/hal-01768427/document>

Author comments to referee 2 comments on “An autonomous and low-power instrument platform for monitoring water and solid discharges in mesoscale rivers” by Nord et al.

In the following, the reviewer comments appear in black italic and our answers are provided in blue. When there are quotations from the text of the article, they appear in quotation marks and the new or corrected parts are highlighted in yellow.

gi-2019-33-RC2.pdf

The authors present a setup for a gauging station to monitor water and sediment transport in high temporal resolution. The station is designed for fast responding, mountainous, mesoscale rivers in remote areas. Both processes – water and sediment transport - are difficult to measure especially in these environments and subject to lots of efforts and uncertainties. Thus, the development of appropriate and robust monitoring techniques as well as their combined application is highly recommended and needed. This is also of special interest for process understanding and model parameterization regarding sediments. Several sensors are assembled in one monitoring system, measuring different parameters which serve as proxies or auxiliary variables to derive water and sediment discharge. The system also aims for data storage and analysis (some measures of primary statistics), data transfer, and remote supervision and control. Also a user web-interface is provided. The manuscript is very good organized. The technical presentation of the RIPLE system with its several components is comprehensive and supported by meaningful figures and tables. However, a comprehensive presentation of the monitoring results is missing or only available partly. Here it would be good to give the reader an impression, what he/she could expect and how the (raw) measurements look like at least for one flood event. Sure, figure 8 shows some of them, but there are more graphs inside than explained and the legends are not self explaining. It would be beneficial if the authors show more results for the same event for other sensors/variables especially regarding the bedload. Figure 9 to 12 are less informative in this regard since they show other periods in time or aspects of minor interest like Figure 12. Furthermore, I have a few doubts about the English language. I am not a native speaker but some phrases sound a bit strange for me.

Answer: we sincerely thank referee #2 for his/her careful reading of the paper and the ways proposed to improve it. We have added a new figure (see below **Figure 14**) showing the raw data measured by 6 sensors for the event of 8 to 9 August 2017 in Bourg d’Oisans (Romanche river). The data are provided by the following sensors: water level radar, surface velocity radar, susix MJK turbidity sensor, conductivity probe, echo sounder and hydrophone. This figure complements Figure 9 of the paper which showed incomplete results since extracted from a snapshot of the user web-interface. This new figure is inserted at the end of the document in section 6 “Case study” (see below specific comment 22-20).

Additionally, for the period from 8 to 9 August 2017, the videos (provided by the Large Scale Particle Image Velocimetry digital camera), photos (provided by the control camera), the two text files “Riple_DATA.txt” (data from all instruments) and “Riple_SAV.txt” (data that enable to remotely control the proper functioning of the platform), and the raw data of the hydrophone are in open access via the following perennial link: https://doi.osug.fr/data/public/RIPLE_8to9August2017/

This provides a comprehensive picture of the data produced by the station in terms of formats, file sizes and data quality.

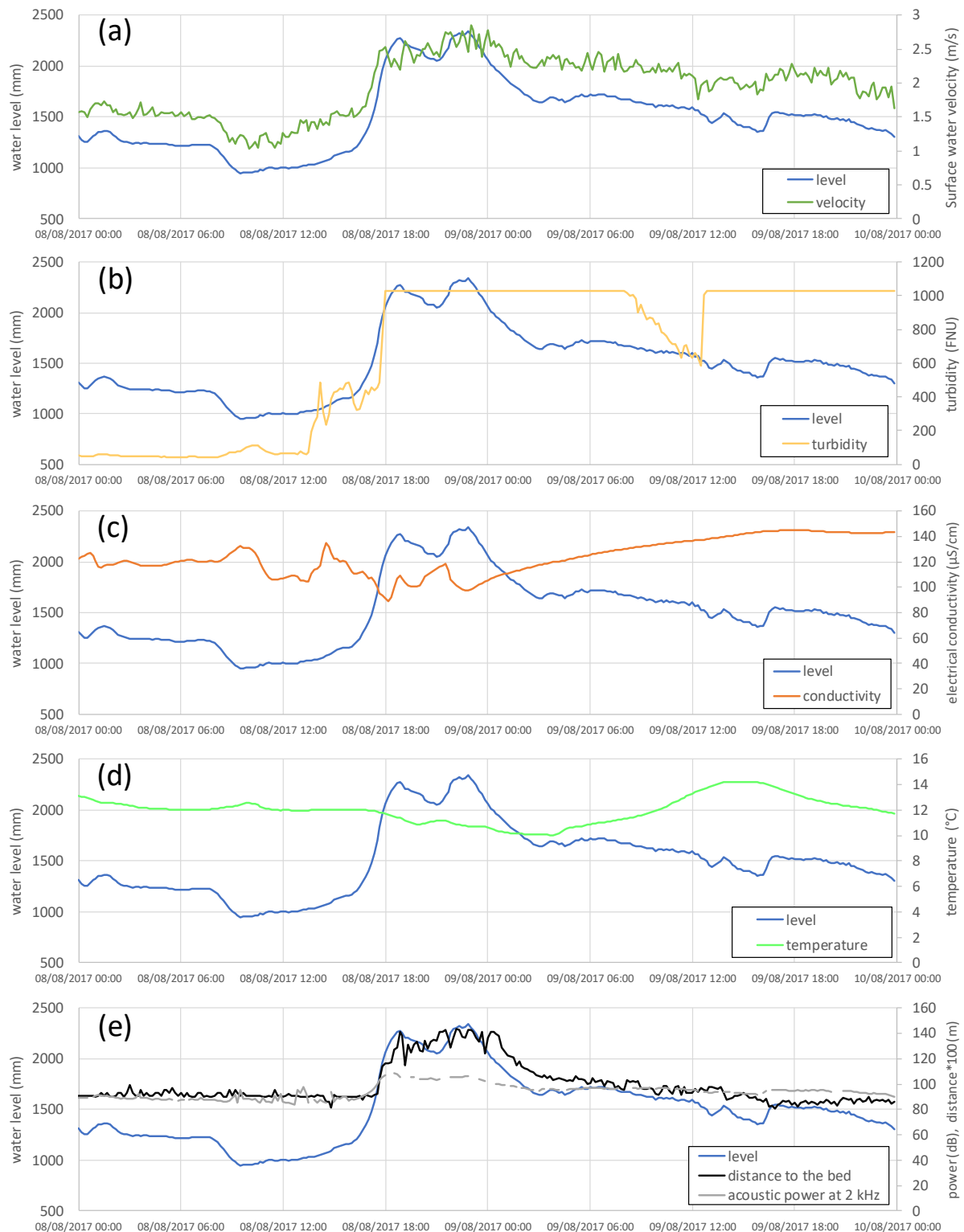


Figure 14: Raw data derived from the “Riple_DATA.txt” file for the 8 to 9 August 2017 in Bourg d’Oisans (Romanche river). (a) Time series of water level and surface water velocity. (b) Time series of water level and turbidity (susix MJK). Due to an inappropriate parameterization of the sensor, there is saturation of the signal above 1000 FNU. (c) Time series of water level and electrical

conductivity. (d) Time series of water level and temperature. (e) Time series of water level, distance from the echosounder to the river bed and acoustic power at 2 kHz measured by the hydrophone.

Regarding the remark about the English language, a large number of corrections proposed by referee #1 John Gray, who is a native English-speaker, as well as other corrections proposed by referee #2 have been taken into account.

Here are some details:

1-19: You can shorten the abstract by removing the information in brackets.

Answer: we would like to remain the information in brackets in the abstract as we believe it provides important clarification to readers, before eventually starting a more in-depth reading of the entire paper. We have only removed information on the geographical coordinates and elevations of the test sites.

1-23: "The RIPLE platform has been designed... " - I don't understand the meaning of this sentences.

Answer: we agree that this sentence is unclear and does not provide relevant information. We have deleted it.

1-28/29: information in brackets not needed in the abstract.

Answer: As mentioned above, we have removed this information from the abstract.

3-4: split the sentence after "... the cross section"

Answer: we agree, the sentences have been corrected as followed: "In turbulent rivers, it is assumed that the SSC is relatively homogeneous within the cross section. Therefore point measurement of turbidity from the river bank is acceptable."

3-6: Maybe, start sentence with "But this assumption..."

Answer: we agree, the sentences have been corrected as followed: "However this assumption is questionable for sand-sized particles (Camenen et al., 2019) and there is no reference method for sand-sized particles to date."

3-9: without returned? -> "... are analysed in the laboratory to measure..."

Answer: we agree, the sentences have been corrected and complemented as followed: "Samples collected at regular intervals or when thresholds are exceeded (e. g. water level, turbidity) are manually retrieved during site visits and brought to the laboratory. They are then analysed to measure..."

3-23: aDcp or ADCP?

Answer: as recommended also by referee #1, we have applied aDcp everywhere.

3-27: "record" instead of "consist in recording"

Answer: we agree, "consist in recording" has been replaced by "record".

4-1: "Up to date, whatever the indirect method used,..." -> I think an english revision is required.

Answer: we have read again the sentence and it does not seem problematic to us.

4-5: Suggest reversing the sentence: "Knowledge of..."

Answer: this correction was also proposed by referee #1 and it has been taken into account as followed: "Knowledge of water discharge is essential whether it is for estimating suspended sediment fluxes, dissolved matter fluxes, nutrient or contaminant fluxes associated with fine particles."

5-9: Suggest: "There are studies ..." instead of

Answer: we agree, "There has been studies..." has been replaced by "There are studies..."

6-21: Suggest: "Therefore, they..." instead of "They therefore..."

Answer: we agree, "They therefore ..." has been replaced by "Therefore, they ..."

7-28: Suggest: "The camera is an AXIS P1427-E. Its selection based on various criteria such as image quality,..."

Answer: we agree, the text has been corrected as followed: "The selected camera is an AXIS P1427-E. Its selection was based on various criteria..."

8-25-32: You are using a standard method for deriving discharge from surface velocity measurements. You can also refer to USGS guidelines or ISO norms.

Answer: we agree, thank you for this remark. The text has been complemented as followed: "A transect of surface velocity along the cross section of the river is extracted and converted to a transect of depth averaged velocity over the vertical using a coefficient that relates the depth averaged velocity to the surface velocity. Such coefficient commonly ranges between 0.75 and 0.85 (Hauet et al., 2008; Le Coz et al., 2010; Welber et al., 2016) but it is preferable to define it from aDcp or current meter measurements in accordance with ISO 748 and USGS guidelines."

The reference to the norm ISO 748 has also been added to the list of references:

“International Organization for Standardization, 2007: Hydrometry — Measurement of liquid flow in open channels using current-meters or floats. ISO 748:2007, Geneva.”

8-29: “depth averaged velocity” sounds a bit crazy since you measure only surface velocities

Answer: yes, we understand your comment. It was also highlighted by referee #1. That is why we have reformulated the text as presented in the previous comment. We have added specifically the following recommendation *“but it is preferable to define it from aDcp or current meter measurements in accordance with ISO 748 and USGS guidelines.”*

However, we should keep in mind that for steep rivers, with slope typically greater than 1%, and particularly in the case of mobile bed rivers, it is almost impossible to maintain conventional stage-discharge rating curves and to measure velocity distributions within the cross section during floods.

9-14: see comment 7-28

Answer: we agree, the text has been corrected as followed: *“The selected camera is an AXIS P1435-LE. Its selection was based on various criteria...”*

9-18: What is meant by “bitter points”? Do you mean “control point”?

Answer: yes, thank you. “bitter points” has been replaced by *“control point”* in the text.

9-25: What is meant by “sides of flow”? Do you mean “river bank”?

Answer: yes, thank you. “sides of flow” has been replaced by *“river bank”* in the text.

9-32: “... the interval ... is constant ...” instead of “be”

Answer: we have read again the sentence and it does not seem problematic to us.

9-34: “... it is not taking movies.” instead of “pictures” Or do you use single pictures from this camera too?

Answer: yes, “pictures” has been replaced by *“movies”*.

10-9: “... to illuminate the water surface.” Without “up to”

Answer: we agree, “up to” has been removed from the text.

10-11: *“exceeded” instead of “overcome”*

Answer: yes, thank you. “overcome” has been replaced by “exceeded” in the text.

10-15: *“... processing steps are executed in the laboratory ...”*

Answer: we agree, “will be” has been replaced by “are” in the text.

10-28: *suggest “target area” instead of “area targeted”*

Answer: we agree, “elliptical area targeted” has been replaced by “elliptical target area” in the text.

10-34: *suggest to remove “... with no connection to the data logger.”*

Answer: yes, thank you. “with no connection to the data logger” has been removed.

11-25: *“... the radar derives the distance separating the radar from the water surface.” Sentence is not understandable. Please revise. And what is its relation to the “blind area” mentioned afterwards?*

Answer: we agree, we have rewritten these two sentences as follows: “Accounting for this time of flight and the velocity of the wave in the air, which depends on the air temperature, the radar calculates the distance from the sensor to the water surface. Distances of less than 0.15 m cannot be measured, this is known as the blind zone.”

12-27: *Please add a reference to “PASS”.*

Answer: we agree, two references “(Huon et al., 2017; M-Tropics, 2017)” have been added in the text and in the list of references:

“Huon S., Evrard O., Gourdin E., Lefèvre I., Bariac T., Reyss J.L., des Tureaux T.H., Sengtaheuanghoung O., Ayrault S., and Ribolzi O.: Suspended sediment source and propagation during monsoon events across nested sub-catchments with contrasted land uses in Laos, *J Hydrol: Regional Studies*, 9, 69–84, 2017.

M-Tropics, Service de données OMP (SEDOO): Stations and acquisition parameters, [online] Available from: https://mtropics.obs-mip.fr/stations-and-acquisition-parameters/laos-lak-sip-catchment/?noredirect=en_US (Accessed 16 January 2020), 2017.”

13-10: *“Above some ... “ ??? Suggest to rephrase: “If ... thresholds are exceeded,*

Answer: we agree, “above some” has been replaced by “In case of exceeding” in the text.

13-34: *“display unit” instead of “Display Unit”*

Answer: yes, it has been corrected.

14-28: *That's not possible since you write before that the sensor is installed above low flow water levels.*

Answer: this sentence was not clear. It has been rewritten as followed: "It was therefore decided to install it at a higher position than the Susix sensor so that it is immersed for a shorter period of time than the Susix sensor, i.e. generally only during the central part of the floods, around the peak of the flood."

15-1: *Please avoid abbreviations in headlines.*

Answer: we agree, "SCAF" has been replaced by "System characterizing aggregates and flocs" in the text.

16-2: *suggest "... of angles less ..." instead of "... with angles of less ..."*

Answer: we have decided to remain the initial formulation.

16-5: *0.007m -> Diameter of 7mm would be really nice. Is this right?*

Answer: good remark. "0.007 m" has been replaced "0.07 m".

18-1: *Suggest: "All procedures ... are presented ..."*

Answer: we agree, the proposition has been applied.

19-18: *Am I right that the echo sounder is mounted next to the lowest water level looking towards the bottom?*

Answer: not really. In the case of the Romanche river in Bourg d'Oisans, the echo-sounder is installed on the central pier of the bridge, about 1 m above the river bed looking down. The echo-sounder is inclined at an angle of about 20° from the vertical. As can be seen in Figure 9 and in the added figure (Figure 14), the distance from the echo-sounder to the river bed varies between 0.9 and 1.4 m during the flood event of the 8 to 9 August 2017.

21-19: *Suggest: "... the FTP-server" instead of "FTP"*

Answer: we agree, "FTP" has been replaced by "FTP server"

22-20: You write "... the platform has worked properly, recording a large data set that will be of great interest for the understanding of sediment transport processes in alpine rivers." Please show an example of this data set at least by visualization of all measured variables for one flood event.

Answer: As presented above, a new Figure has been added. The end of section 6 was complemented as followed: "Figure 14 shows the raw data measured by 6 sensors for the event of 8 to 9 August 2017 on the Romanche river in Bourg d'Oisans. The data are provided by the following sensors: water level radar, surface velocity radar, Susix MJK turbidity sensor, conductivity probe, echo sounder and hydrophone. Figure 14 focuses on the same flood event as Figure 9 which was only a screenshot of the user web-interface. Additionally, the videos (provided by the Large Scale Particle Image Velocimetry digital camera), photos (provided by the control camera), the two text files "Riple_DATA.txt" (data from all instruments) and "Riple_SAV.txt" (data that enable to remotely control the proper functioning of the platform), and the raw data of the hydrophone are in open access for this flood event through this link: https://doi.osug.fr/data/public/RIPLE_8to9August2017/

This provides a comprehensive picture of the data produced by the station in terms of formats, file sizes and data quality."

22-29: Please revise "much". Maybe: "... it is also adjustable and transferable ..."

Answer: we agree, the sentence has been corrected as followed: "The platform has been designed to be applied preferably to rivers in mountainous areas, but it is adjustable and transferable to lowland rivers."

23-15: Suggest: "These measurements must be performed under conditions that are close to the in situ environment in order to avoid subsequent flocculation/disaggregation processes."

Answer: we agree, "most closely resemble those of" has been replaced by "are close to".

24-8: You write "... of the same variables as those measured by RIPLÉ platform at other points ..." How can bedload and suspended sediments be measured by drone? Please revise this paragraph or remove it. You can also place your hints on improvements in remote sensing in the paragraphs before.

Answer: we do not really understand this remark because the aquatic drone can carry submerged instruments to make measurements at any point in the river. Nevertheless, one sentence has been changed to make the things clearer: "The aquatic drone can thus carry submerged instruments (e.g. conductivity probe, turbidimeter, echo-sounder, hydrophone, automatic sampler) to perform measurement campaigns..."

A new sentence was also added concerning the point on remote sensing: "Remote sensing instruments (e.g. radiometers) could also be added to perform non-intrusive turbidity measurements."

An autonomous and low-power instrument platform for monitoring water and solid discharges in mesoscale rivers

Guillaume Nord¹, Yoann Michielin¹, Romain Biron¹, Michel Esteves¹, Guilhem Freche¹, Thomas Geay², Alexandre Hauet³, Cédric Legouët¹, Bernard Mercier¹

¹Univ. Grenoble Alpes, CNRS, IRD, Grenoble INP, IGE, 38000 Grenoble, France

²Univ. Grenoble Alpes, CNRS, Grenoble INP, GIPSA-lab, 38000 Grenoble, France

³Electricité de France, DTG, Grenoble, France

Correspondence to: G. Nord (guillaume.nord@univ-grenoble-alpes.fr)

Abstract. We present the development of the **River Platform for monitoring Erosion (RIPLE) platform** designed for the monitoring at high temporal frequency (~ 10 min) of water discharge, solid fluxes (bedload and suspended load) and properties of fine particles (settling velocity) in mesoscale rivers, **i.e. which drain mesoscale catchments ($\approx 10\text{-}10^3 \text{ km}^2$)**. This platform responds to a request to continuously measure these variables in rivers using a single, centralized device, and in the most direct way possible. The platform integrates the following instruments: (i) for water discharge: water level and surface velocity radars, digital cameras, echo-sounder; (ii) for fine sediment load: turbidimeters, automatic samplers including the SCAF (sediment settling velocity characterization device), (iii) for bedload: a hydrophone, (iv) for water quality: a conductivity probe and water sampling. As far as water discharge monitoring is concerned, priority has been given to non-intrusive instruments to improve the robustness of the system. All the instruments are driven by a data logger (Campbell® CR6), which stores locally the data and then upload them to a remote server every hour during the day using a 3G modem. SMS (Short Message Service) alerts can be sent depending on scheduled conditions (e.g. low battery voltage, water level threshold, all samples of the automatic sampler collected). The platform has been designed to be as autonomous as possible: it is powered by a battery supplied by a solar panel. Limiting the power consumption of the platform was one of the main technical challenges, because of the quantity of instruments integrated. A simple 100 W solar panel is sufficient to power up the entire platform, even during winter or low insulation conditions. ~~The RIPLE platform has been designed to facilitate its use and maintenance.~~ A user-friendly interface has been developed enabling to visualize the data collected by the platform from an internet connection. It is also possible to remotely configure the platform within this interface, for example to modify water sampling thresholds or alert thresholds. Finally, the platform is relatively easy to move from one site to another site because its installation requires little civil engineering. To date, RIPLE has been tested on two rivers of the Alps in France: the Romanche river in Bourg d'Oisans ([45.1158°N, 6.0134°E, 710 m elevation](#)) from September, 2016 to July, 2018 and the Galabre river in La Robine sur Galabre ([44.1586°N, 6.2360°E, 680 m elevation](#)) since October, 2018, demonstrating the proper functioning of the platform.

Mis en forme : Anglais (Royaume-Uni)

Mis en forme : Surlignage

Mis en forme : Surlignage

Mis en forme : Surlignage

1 Introduction

Sediment transport has an impact on the ecological status of water bodies, the morphological dynamics of the river, the stability of river banks and structures, as well as many human activities such as energy production and drinking water supply (Renwick et al., 2005; Lee and Foster, 2013). Two modes of transport are classically considered: bedload and suspended load (Julien, 1995). Bedload consists of coarse particles transported by sliding, rolling or saltation on the bottom of the river. Suspended load refers to the transport of fine particles through the turbulent field, within the water column. **In this study, suspension load applies for particles finer than 2 mm.** The river sediment material is generally a mixture of coarse and fine particles that can interact together in relation to hydrology (the succession of floods and low flows), vegetation and human activities (material extraction, riverbed modification, presence of dams and weirs) (Corenblit et al., 2007). The transfer of coarse and fine particles downstream can lead to progressive siltation of structures, such as hydroelectric power plants (Morris and Fan, 1998; Walling and Fang, 2003), or to degradation of river quality by clogging the bottom or by direct attack on the respiratory organs of fish species (Owens et al., 2005). Alternatively, high-energy rivers with insufficient supply of sediment load can lead to erosion of the main channel (Frings et al., 2014). Suspended sediments are also a privileged vector for the transport of nutrients (C, N, P) or contaminants (pesticides, metals, organic products, microorganisms). Finally, the increase in turbidity leads to significant over costs for water treatment when it is used as drinking water (Sobieszcyk, 2007). Overall, there is a need for systems able to monitor water and solid discharges in rivers, and these systems should take into account both fine and coarse sediments.

Mis en forme : Surlignage

High frequency monitoring of water and solid discharges is also a key element for the scientific community interested in the functioning of the Critical Zone (earth's near surface) in response to global changes (climatic change, land use and land cover changes). The understanding of the Critical Zone requires a holistic approach involving the monitoring of a combination of variables such as hydrological, chemical and biological variables (Brantley et al., 2016; Gaillardet et al, 2018) in different compartments of the catchment, i.e. soil, groundwater, river, surface-atmosphere interface, vegetation. One of the main issues of the people working on the Critical Zone is the determination of mass balance of water and associated mater and energy balance. The fluxes exported through the river system are of primary importance as the river collects a large part of the surface and subsurface flows within the catchment. There has been a recent attempt by the French Critical Zone community (Gaillardet et al, 2018) to develop a list of variables to be monitored continuously in each of the compartments of the Critical Zone. For rivers, this list includes variables such as flow discharge, electrical conductivity, temperature, turbidity, suspended sediment concentration (SSC), chemical and isotopic composition of the water.

Mis en forme : Surlignage

Estimates of suspended sediment flux are ~~The suspended sediment flux is~~ usually obtained by multiplying the water discharge by the SSC, typically expressed in g/l of the mixture of water and suspended sediment. High-frequency SSC monitoring is

Mis en forme : Surlignage

required for reliable estimate of the suspended sediment flux. Nevertheless, a reliable and easy method to obtain a direct, continuous SSC measurement is not currently available. Alternatively, a proxy of the SSC, which can be easily monitored continuously and related to SSC, is employed. The most commonly used proxy to date is turbidity (Gray and Gartner, 2009; Rasmussen et al., 2009; Navratil et al., 2011). In turbulent rivers, it is assumed that the SSC is relatively homogeneous within the cross section, and therefore that a point measurement of turbidity from the river bank is acceptable. This is easily the case in rivers where the slope of the bed is greater than 0.1% (Mano, 2008.; Navratil et al., 2011) and for silt size particles or finer. However, this assumption is questionable for sand-sized particles (Camenen et al., 2019) and, however, there is no reference method for sand-sized particles to date. The turbidity-SSC rating curve is established from direct measurements of SSC that are performed through automatic water sampling. Samples collected at regular intervals or when thresholds are exceeded (e.g. water level, turbidity) are manually retrieved during site visits and brought to returned to the laboratory, and they are then analysed to measure the SSC using the filtration method (for low SSC, typically < 2 g/l) or the total evaporation method (for higher SSC) (Navratil et al., 2011; Nord et al., 2014; ISO 4365). A global turbidity-SSC rating curve can be established using all direct SSC measurements performed at a station and allow the turbidity time series to be converted into the SSC time series. However, in headwater catchments where sediment sources can vary rapidly during a flood, it is strongly recommended to perform a specific calibration for each flood to reduce measurement uncertainty (Navratil et al., 2011). Indeed, turbidity is very sensitive to particle size and also to the shape and colour of the particles.

Mis en forme : Surlignage

Mis en forme : Surlignage

Mis en forme : Surlignage

Mis en forme : Surlignage

Mis en forme : Surlignage

Mis en forme : Surlignage

High-frequency bedload sampling is required for reliable estimate of the bedload flux since bedload transport is a very dynamic process and can even be discontinuous through the occurrence of intermittent pulses (Aigner et al., 2017). However bedload samplings are very challenging to be performed continuously over long periods. Alternatively, hydraulically-based equations are mostly used to compute bedload sediment budget (e.g. Recking et al., 2012) but their reliability is sometimes questionable (Gray and Simões, 2008). In the last decades, several proxies were used to get a continuous monitoring of bedload processes with surrogate methods (Gray et al., 2010). Among these methods, three of them do not need the installation of heavy, dedicated structures in the stream flow: (i) acoustic Doppler current profiler (aDcp), (ii) passive acoustic and (iii) seismic. aDcp can be used to measure an apparent bedload velocity which is related to bedload fluxes (Rennie et al., 2002, 2017). However, the deployment of aDcp operating from the surface is not appropriate in the case of rivers with steep slope (typically > 1%) because the presence of waves at the surface of the water hinders the measurement and floating objects transported during floods may damage the device. Passive acoustic and seismic monitoring consist in recording record the noises that are naturally generated by bedload transport when impacting the riverbed (Thorne and Foden, 1988; Tsai et al., 2012). Passive acoustic monitoring is achieved with hydrophones that sense the acoustic waves propagating under water. The acoustic power of bedload sounds has been related to bedload fluxes by using site-specific calibration curves in gravel-bed rivers (Marineau et al., 2016; Geay et al., 2017a). Seismic monitoring is achieved with geophones or seismometers which record the seismic waves propagating in the soil layer (surface waves). Similarly, the power of bedload seismic noises has been related to bedload fluxes in laboratory experiments (Gimbert et al., 2018) and partially in field-experiments (Roth et al., 2016). Acoustic and seismic monitoring

Mis en forme : Surlignage

Mis en forme : Surlignage

Mis en forme : Surlignage

provide continuous proxies that are related to bedload fluxes but these proxies are also dependent on additional bedload parameters (i.e. grain size distribution, bedload kinematics) and on processes related to wave propagation (Geay et al., 2017b). Up to date, whatever the indirect method used, calibration efforts with direct bedload samplings are needed to elaborate rating curves and to finally provide a continuous monitoring of bedload fluxes.

5 ~~Knowledge of water discharge is essential Whether it is for estimating suspended sediment fluxes, dissolved matter fluxes, nutrient or contaminant fluxes associated with fine particles. knowledge of water discharge is essential.~~ The monitoring of water discharge is not easy, especially in mountainous rivers where flow discharge can vary of several orders of magnitude in a few hours (Borga et al., 2014) and solid discharges can demonstrate a ~~very dynamic behavior over time~~ hysteric and ~~transitory behavior, even~~ more impulsive than the flow itself, resulting in significant changes in the morphology of the river. Therefore monitoring discharge deserves a special attention. The conventional monitoring of flow discharge involves the measurement of a primary variable such as water depth or water level. A calibration curve, so-called stage-discharge rating curve, is usually established based on information such as gauging (punctual discharge measurements performed using different techniques such as slug injection of a tracer in solution, current meter, aDcp, handheld surface velocity radar gun) or hydraulic modelling to convert the water level time series into flow discharge time series (World Meteorological Organization 2010; Tomkins, 2012). This work typically involves ~~significant~~ substantial human and financial effort. It is indeed very demanding to mobilize technical work force to carry out gauging. Moreover, the mobilization of work force during floods is not without risk for the operators. It is also not so frequent to be present in the field during the biggest hydrological events. Finally, when a morphogenic flood occurs, the changes of the river geometry implies to start over the calibration curve. Thus, new methods are required to provide more direct access to the water discharge (without using the stage-dicharge rating curve) and therefore reduce the field work related to gauging and bathymetry surveys. These methods involve the use of other variables in addition to the water level.

25 The first variable that has been added to hydrometric stations is velocity. During the last decade, the introduction of fixed flow velocity monitoring systems (transit time ultrasonic flow meters, acoustic Doppler current profiler horizontal (H-aDcp) and vertical (V-aDcp), surface velocity radars) into hydrometric stations equipment has gradually become more widespread (Costa et al., 2006; Levesque and Oberg, 2012; Nord et al., 2014; Thollet et al., 2017). These systems all provide a more or less local monitoring of flow velocity. More recently, systems using cameras and the Large Scale Particle Imagery Velocity (LSPIV) method have been developed and deployed in the field to estimate the surface velocity field (Hauet et al., 2008; Leduc et al., 30 2018; Le Coz et al., 2010 ; Muste et al., 2008; Stumpf et al., 2016). These systems provide field data of velocity on a stretch of river. Whether it is fixed flow velocity monitoring systems or LSPIV systems, there is no direct access to the mean channel velocity which is the variable of interest to estimate directly the flow discharge by multiplying the mean channel velocity by the cross-sectional flow area. Thus the development of innovative methods is necessary to estimate the mean channel velocity from surrogate monitoring. The first attempts concern the index velocity method but this approach is still largely based on the

Mis en forme : Surlignage

Mis en forme : Surlignage

Mis en forme : Surlignage

Mis en forme : Surlignage

use of gauging (Levesque and Oberg, 2012; Morlock et al., 2002). Continuous monitoring of the cross-sectional flow area by a direct method is not possible to date because of the lack of dedicated technology. Alternatively, a relation between stage and channel area, called a 'stage-area rating' is established based on topographic surveys, which are repeated typically once a year or after each morphogenic flood. Changes in the water level-velocity relationship make it possible to detect changes in the bathymetry and the need to survey new bathymetry of the section (Thollet et al., 2017).

Therefore, being able to carry out high frequency monitoring of water and solid discharges in any river and at any site of convenience is a high expectation for both operational and research applications. This should make it possible to extend the monitoring to isolated sites that have not yet been gauged, in environments that may be remote, difficult to access, under potentially extreme conditions (humidity, temperature, wind, radiation) or subject to destructive phenomenon (cyclone, floods, vandalism, etc.). The availability of power, continuous data transmission and possible remote configuration remains a challenge in these environments. There have been ~~are~~ studies that have developed autonomous monitoring platforms in hostile environments to remain unattended for several months or years (Musko et al., 2009; Bhatti and Ridley, 2014; Clauer et al., 2014; Peters et al., 2014; Morschhauser et al., 2017) but little or none for monitoring of water and solid (both fine and coarse particles) discharges in rivers (Mueller et al., 2013; Navratil et al., 2011; Comiti et al., 2014; Griffiths et al., 2014). This study presents the development of a multi-instrumental platform called RIPLE (~~River Platform for monitoring Erosion~~). The different variables measured relate to the flow discharge, water quality, fluxes of fine and coarse sediment and optionally the properties of suspended fine sediments (settling velocity). A user interface is also presented that enables data visualization and remote configuration of the platform. A case study is described to validate the platform's operation.

2 Design consideration

The development of RIPLE is preferably aimed at mesoscale rivers, with potentially high SSC values (peak values typically between 1 and 100 g/l), flow discharge ranging over several orders of magnitude in a short period of time (from 10^{-2} to 10^2 m^3/s a few dozen l/s to several hundred of m^3/s) and bedload particles composed of a variety of grains from sand to cobbles or even boulders. However, it should be noted that the proposed instrumentation could be applied directly or after some modifications to lowland rivers and/or larger rivers. The choice was made to integrate into the platform instruments with a level of development that allows them to be easily assembled and to include recently developed instruments in the laboratory when ~~commercially available equipment~~ ~~company equipment~~ do not yet exist. Priority was given to non-intrusive instruments because of their robustness. Indeed, floods may produce important damage or destructions to any device present in the water. However, if non-intrusive instruments are commonly available for hydrometric applications, they do not really exist for the monitoring of sediment fluxes in this type of environment. The minimum set of variables to be integrated in the platform is as follows for: (i) hydrometry: surface velocity and water level; (ii) water quality: water conductivity, temperature and water sampling; (iii) suspended sediment: turbidity and SSC via water sampling; (iv) bedload: acoustic power and elevation of the

Mis en forme : Surlignage

Mis en forme : Surlignage

Mis en forme : Surlignage

Mis en forme : Surlignage

river bed. A staff gauge and a control camera are also required to establish a local elevation reference frame and check the general state of the platform. All instruments should be controlled by a central control system.

The platform should allow interaction between the different measurements (enabling triggering conditions to be activated and easily parametrized), data storage, remote data transfer, sending alarms, remote and real-time management. In addition, the platform should be autonomous in energy and easily movable from one site to another. The different functions taken into account in the development of this platform are shown in the diagram of [Figure 1](#).

The sections presented in the following correspond to the sequential tasks that have been performed during the development of the platform: 1) the definition of the architecture and the choice of the acquisition and control system; 2) the development of an integrated solution: definition, development, test and formalization of protocols: power supply, sensors electronics, data storage, remote data transfer, enclosure/mechanics, and control software; 3) the development of a software interface allowing remote archiving and visualization of data and maintenance of the platform by sending new programs to modify the operation of the control system and the interaction between measurements; 4) the deployment of the platform in the field for test and validation.

3 System design

3.1 Control system

The instruments integrated in RIPLE are listed in [Table 1](#). They are sorted according to the type of measurement they provide: hydrometry, water quality, suspended load, and bedload. The name of the variable, the physical principle of the measurement, the name of the model, the name of the manufacturer and the integration status in RIPLE are given for each instrument. A detailed description of each instrument is given in Section 3.3. All instruments are produced and marketed by manufacturers with the exception of the optic fiber turbidimeter (so-called “capteur marseillais”) for high turbidity, and PASS (automatic water sampling) which are developed in public research laboratories and individually manufactured at the moment. The SCAF (sediment settling velocity) has recently been marketed by the Aqualabo company. Two instruments, i.e. PASS (automatic water sampling) and SCAF, are now integrated in RIPLE but were not included in the case study presented in Section 6. [Therefore, they therefore](#) appear as optional in Table 1.

The devices integrated in RIPLE are all controlled by the Campbell CR6 data logger ([Figure 2](#)). This data logger was chosen because of its robustness in isolated sites and under difficult environmental conditions (humidity, temperature), its flexibility in terms of ports (universal ports), Ethernet port, Secure Digital (SD) memory card slot, large number of possible expansion modules (CDM-A108: analog expansion module, SDM-SIO1A: RS-232 RS-485 RS-422 expansion modules) enabling to control the large number of instruments integrated. This control system has a wireless connection option, allowing

Mis en forme : Surlignage

to remote control the system from the car or from a shelter during bad weather. The type of communication with each instrument is shown in [Figure 2](#). The other technical elements necessary for the operation of the platform are a solar panel, a solar regulator, a battery and a modem. The electrical diagram of RIPLÉ is presented in the [Appendix A](#).

5 The sampling period of the platform is 10 minutes which is a good compromise between saving energy and obtaining a good description of water and sediment fluxes temporal variability in mesoscale rivers (Navratil et al., 2011). During the day, data ~~is~~ **are** streamed every hour via a 3G/GPRS modem to the server located in the laboratory in Grenoble and a digital control image is also transmitted. The modem is switched off at night to limit power consumption. For sites where a 3G connection would not be available, it is possible to switch to a 2.5G connection. It is still acceptable for ASCII data but it should be kept
10 in mind that few images can be transmitted in this case. Alternatively, a satellite connection could be considered taking into account the higher subscription cost.

Mis en forme : Surlignage

3.2 Power supply

RIPLÉ is powered by a combination of battery and photovoltaic panel to make it autonomous in energy and installable in a wide range of site, even if there is no wired power grid. The power of the solar panel must be checked for each installation
15 according to the sunshine on the site (latitude and elevation of the site, orientation and angle of the panel, presence of masks). In [Table 2](#), the detail of the power balance is displayed for the case study presented in Section 6. The total consumption of the platform was estimated at 7758 mA.h/day or 97.7 W.h/day. This calculation takes into account a 10 minutes sampling period for most of the instruments except the cameras which are switched on only every hour. Furthermore, the calculation is made with a sampling of 24 bottles during a single day. The data logger, which operates continuously, has the largest energy
20 consumption, then comes the automatic sampler. Considering an autonomy of the battery of 5 days, which means a period of 5 days without any solar input, and a battery level that should not fall below 25% of its capacity, we obtain a capacity of 51.7 A.h. Considering an additional safety factor of 65%, the minimum battery capacity is 80 A.h. The selected battery model is a Sonnenschein Dryfit Solar Block SB 12 / 100A.h. The Photovoltaic Geographical Information System (PVGIS) proposed by the European Commission (<http://re.jrc.ec.europa.eu/pvgis/>) was exploited to define the power of the photovoltaic panel to be
25 used in combination with the battery of 100 A.h. The results showed that a photovoltaic panel of 100 W was sufficient to comply with the criteria of charge of the battery (at least 25% of its capacity), even at the heart of winter, when the radiation is at its lowest. A photovoltaic panel Sunmodule SW 100 poly RIB (100 W) and a solar regulator STECA PR1010 10A/12-24V were therefore selected.

3.3 Sensors

30 The different instruments integrated in the RIPLÉ platform are presented in Table 1 and Figure 2. This section aims to provide more detailed information on each of the sensors and equipment.

3.3.1 Control camera

The **erial** control camera acts as a webcam, allowing to remotely visualize the instruments and the river. The camera can help to make a remote diagnosis in case of malfunctioning of the platform. The **selected** camera is an AXIS P1427-E. **Its selection** **was** based on various criteria such as image quality, zoom and focus, power consumption, robustness to the environment and transfer in real time of images. The maximal image resolution of the camera is 5 Mega Pixels (MP). Tests in the lab have shown that the image resolution should be at least 3 MP to allow details to be seen by zooming in the image. The minimum–maximum focal lengths of the zoom lens are 2.8–9.8 mm. The lens has a fixed aperture of f/1.6. The horizontal angle of view ranges between 27° and 92°. A wide horizontal angle of view (at least 80° to 100°) is required to get an overview of the site and of all the sensors. It means that the entire section of the river on which the platform is located and the adjacent river reach (about ten meters upstream and downstream) should be visible in the image. This makes it possible to understand the hydraulic behaviour of the river reach under all water level conditions. The control camera is usually installed at the opposite river bank to the staff gauge in order to see both the staff gauge and most of the sensors. The consumption of the camera is 5 W and it can be turned off while it is not taking pictures. The camera supports for HTTP, UDP and FTP protocols. The camera is connected to a Power over Ethernet (PoE) injector, which in turn is connected to the data logger via an Ethernet cable (see [Appendix AAppendix A](#)). The PoE injector is connected to the power supply (12 V). The data logger controls a relay that supplies power to the PoE injector. In terms of protection against solids and liquids, the enclosure of the camera complies with the Ingress Protection IP66. The camera can operate from -30 °C to 50 °C and with relative humidity between 10% and 100% (including condensation).

The triggering of the acquisition is programmed as follows: (i) the camera is started by the data logger **only during day time** via the electrical relay (typically once an hour) (ii) the camera takes a picture at the end of a 2 minutes heating period (iii) the camera sends the picture to a FTP address via the data logger and also locally records a copy of the image on its 64 GB SD memory card (iv) the camera is switched off via the relay.

Ideally it would have been possible to zoom in and even orient the camera remotely. However, these specifications were not retained since they would have had a strong impact on the power consumption of the platform (motors within the camera, need to keep the modem on when driving the camera) and on the amount of data passing through the network (limited by the GPRS subscription). As a result, the camera maintains fixed position, focal length and focus.

It is necessary to regularly retrieve the images that are stored directly on the SD card of the control camera by connecting to the camera from a Personal Computer (PC) using the Ethernet link from the RIPLE cabinet during the field visits. This allows to retrieve all the control images for subsequently archiving because it is possible for some images to be poorly or not at all remotely transferred by the data logger due to the variable quality of the 3G connection.

Mis en forme : Surlignage

Mis en forme : Surlignage

Mis en forme : Surlignage

3.3.2 Large Scale Particle Image Velocimetry digital camera

This camera is dedicated to the Large Scale Particle Image Velocimetry (LSPIV) analysis, an optical technique for measuring surface velocity fields from image processing algorithms, analyzing the movement of natural tracers (leaves, floating branches, turbulent eddies) present on the water surface using a video of the river. A transect of surface velocity along the cross section of the river is extracted and converted to a transect of depth averaged velocity over the vertical using a coefficient that relates the depth averaged velocity to the surface velocity. Such coefficient commonly ranges between 0.75 and 0.85 (Hauet et al., 2008; Le Coz et al., 2010; Welber et al., 2016) but it is preferable to define it from aDcp or current meter measurements in accordance with ISO 748 and USGS guidelines. Afterwards, knowing the cross section geometry, discharge is calculated by integrating depth averaged velocities along the cross section with an accuracy of approximately 20% (Welber et al., 2016).

The major advantages of this technique are the non-intrusive aspect (sensor out of water) and the automation of the acquisition which allows to obtain surface velocity fields without any human resources/manpower on site. There is no risk for operators and no risk of missing the peaks of the floods, with the exception of night time and technical problems. In this study, the LSPIV technique is not used to obtain continuous time series of discharge due to the limitations of the method (see below) and our inability to monitor the bathymetry of the section continuously. Alternatively, this technique provides a set of “automatic” discharge measurements that makes easier and faster the building of a stage-discharge relationship. The main drawbacks of the technique are as follows: (i) a manual selection of the video sequences is necessary because some videos are not usable (e.g. lack of brightness, sun reflections, presence of dirt or water drops on the lens); (ii) the LSPIV processing steps are relatively time consuming and require a specific expertise. These steps include a possible correction (depending on the focal length used) of image distortion, orthorectification of images (transformation of the image from fixed objects whose exact GPS location is known) in order to have the same scale at each point of the images, calculation of surface velocity and flow discharge. These steps are performed using the Fudaa-LSPIV software, a free software available online (<https://forge.irstea.fr/projects/fudaa-lspiv/files>) that uses the Fudaa libraries released under the GPL licence; (iii) the method is not applicable during the night.

The selected camera is an AXIS P1435-LE. Its selection was based on various criteria such as image resolution, acquisition frequency, zoom and focus, power consumption, robustness to the environment, possibility of recording on SD card and presence of an integrated IR projector for tests at night-time. The camera has an adjustable resolution from 160 * 90 to 1920 * 1080 (2 MP). Preliminary tests have shown that a minimum resolution of 600 * 400 is required for rivers with widths less than 30 m but resolution can be increased if needed. Resolution is more important for the precise positioning of the biter control points than for the visualization of the tracers. There is a link between resolution and focal length to be taken into account. The minimum–maximum focal lengths of the zoom lens are 3–22 mm. The aperture is f/1.4 for focal lengths from 3

Mis en forme : Surlignage

Mis en forme : Surlignage

Mis en forme : Surlignage

Mis en forme : Surlignage

Mis en forme : Surlignage

Mis en forme : Surlignage

Mis en forme : Surlignage

to 10.5 mm and f/1.85 for focal lengths from 10 to 22 mm. The horizontal angle of view ranges between 18° and 95°. This wide range of angle of view makes it possible to adapt to many sites. For positioning the camera and adjusting the angle of view, the following conditions must be respected (Le Boursicaud et al., 2016): (i) both river banks have to be visible in the image so that a complete cross-section is monitored; (ii) fixed and permanent markers (tree trunk, boulder, bridge pier, etc.) should be present within the images, ideally placed on both sides of the flow, river banks; (iii) the targeted cross-section should be close to the cross section that includes the water level sensor and the staff gauge to have an accurate estimation of the wetted cross section. Furthermore, to optimize the results of the LSPIV technique, it is suitable to focus on an area where surface flow is as regular as possible; favour a stretch of river with a hard and stable bottom and avoid as much as possible solar reflections, scintillations and cast shadows. To meet all these criteria, it is preferable to install the camera at a significant height above the river. This will also prevent the use of a low focal length that causes high distortion with this type of lens and is difficult to correct later.

Mis en forme : Surlignage

The frame rate is up to 50/60 frames per second (fps) in all resolution. A minimum frame rate of 25 frames per second is used in this study. It is important that the interval between two images be constant and accurate. The consumption of the camera is 5 W and it can be turned off while it is not taking pictures. The camera is connected to a PoE (Power over Ethernet) injector (see Appendix A-Appendix A). The PoE injector is connected to the power supply. The data logger controls a relay that supplies power to the PoE injector. In terms of protection against solids and liquids, the enclosure of the camera complies with the Ingress Protection IP66. The camera can operate from -30 °C to 55 °C and with a relative humidity between 10% and 100% (including condensation). The duration of the video sequences is 10 s. It is a compromise between, on the one hand, the minimum number of image pairs required to make a robust calculation and to average turbulent velocities and, on the other hand, the amount of data to be stored. The video sequences can be recorded on a SD memory card. A 10-second film at a resolution of 2 MP and an acquisition rate of 25 fps without further compression typically generates a 30 Mega Bytes (MB) file. A 64 Giga Bytes (GB) SD memory card is therefore used in this application. For night measurements, an integrated Infra-Red (IR) projector based on highly efficient Light Emitting Diodes (LEDs) with adjustable intensity and angle of illumination is available. However, primarily tests have shown that the projector is not powerful enough to illuminate the water surface.

Mis en forme : Surlignage

The triggering of the acquisition is programmed as follows: (i) the camera is started by the data logger via the relay for 2 minutes at regular intervals (typically every 30 minutes) when triggering conditions of turbidity and water levels are overcome, i.e. during flood (ii) the camera takes a short video (10 seconds) of the river and records the acquisition directly on its 64 GB SD memory card (iii) the camera is switched off via the relay.

Mis en forme : Surlignage

The video sequences stored in the LSPIV camera are retrieved regularly during field visits by connecting to the camera from a PC using the Ethernet link from the RIPLE cabinet. The LSPIV processing steps will be executed back in the laboratory

Mis en forme : Surlignage

in Grenoble. It is important not to change the position, angle of view and focus of the camera in order to easily reproduce the LSPIV processing chain. Finally, it was chosen not to use the same camera for the control and for the LSPIV, even if this solution had initially been considered, because the installation constraints specific to each of them are generally very different.

3.3.3 Surface velocity radar

5 The surface velocity radar model RG-30 from Sommer company was selected in this study. It was designed for non-contact measurement of the surface flow velocity of river and channels. The sensor is mounted above the river, usually installed on bridges or river banks using extension arms (Figure 4). The radar sensor requires a low maintenance operation over many years.

10 The sensor emits a 24 GHz microwave beam (K-band) towards the water surface inclined by an angle of 58° from the vertical axis. The radar sensor has an opening angle of 12° , hence, the projected area over the water surface of the river is an ellipse. The measurement of the flow velocity is based on the principle of the Doppler frequency shift. The reflected electromagnetic wave from the water surface is received by the antenna, analyzed and converted into surface water velocity. Every measurement is space averaged over the elliptical ~~target~~ area ~~targeted~~. The size of the targeted area, which depends on the

15 distance from the sensor to the reflecting water surface, increases as water level decreases. The velocities appearing in this area have a specific distribution depending on the flow conditions. The velocity distribution is determined with a digital signal processor via spectral analysis and the dominant velocity in the measurement area is calculated (internal processing developed by the Sommer company and not available to the user). Spectra can be output using the RQCommander software (Sommer company) by connecting directly a PC to the RG30 using a serial connection (RS485) ~~with no connection to the data logger~~.

20 These spectra cannot be sent to the data logger, they can therefore only be used to evaluate the quality of the measurements during visits to the site. The quality of radar velocity measurements depends on flow surface patterns. As the flow surface gets exposed to external disturbance, caused by wind or rain, the system measurements become less reliable. Similarly, when no surface patterns are present on the surface, the measurement is biased (Welber et al., 2016). Velocity measurements are possible, if the wave height exceeds 3 mm, higher waves improve the reproducibility of the measurement. In the same way,

25 best measurements are obtained when water is turbid.

The enclosure of the RG-30 complies with the Ingress Protection IP68. It has been designed to withstand exceptional floods with punctual immersion and can operate from -30°C to 55°C . The radar sensor can be mounted in a range from 0.5 to 30 m above the water surface or river bed. The radar sensor can either be mounted in or opposite to the flow direction. The view

30 direction against the flow direction is recommended by the manufacturer. The measuring range is from 0.30 m/s to 15 m/s, the accuracy is ± 0.02 m/s and the resolution is 1 mm/s. However, the experience shows that the signal can be noisy at low velocity, typically less than 0.5 m/s.

Mis en forme : Surlignage

Every 10 minutes, the measurement is ordered by the data logger using a Serial Data Interface at 1200 baud (SDI12) protocol. Every measurement is time averaged over 30 records obtained in a time interval of 30 seconds. In addition to the velocity, a quality value of the measurement is provided and recorded. The radar is put on standby by the data logger between each measurement to limit power consumption.

5 3.3.4 Water level radar

The water level radar CRUZOE manufactured by Paratronic was selected in this study. It is designed for non-contact measurement of water level in rivers or channels. The sensor is mounted above the river, usually installed on bridges or river banks using extension arms (Figure 4). Flow areas that can be hydraulically disturbed by bridge piers must be avoided. The sensor should preferably be placed in the same section as the staff gauge.

The system emits a short microwave impulse (24.125 GHz, K band) towards the water surface and captures the reflected signal. The radar sensor has an opening angle of 12°. The radar antenna is both emitting and receiving. The sensor derives the time of flight of the impulse. Accounting for ~~this time of flight and~~ the velocity of the wave in the air, ~~which depends on the air temperature, the radar calculates the distance and applying a correction with respect to the air temperature, the radar derives the distance separating the radar from~~ ~~from the sensor to~~ the water surface. ~~Distances of less than 0.15 m cannot be measured, this is known as the blind zone. There is therefore a blind area of 0.15 m directly under the sensor.~~

The radar CRUZOE is easy to use. It does not require any parameter setting. Indeed, the "factory settings" allow its direct use in most cases. It is only necessary to convert the output value into an elevation in the staff gauge which is the absolute elevation reference of the station. Readings of the staff gauge during field visits or by mean of the images sent by the control camera allow to check the validity of the measurement and detect any possible changes in the geometry of the riverbed.

The enclosure of the CRUZOE radar complies with the Ingress Protection IP68. It has been designed to withstand exceptional floods with immersion of 100 days under 1 m and can operate from -20 °C to 60 °C. The radar sensor can be mounted in a range from 0.15 m to 30 m above the water surface or river bed. The accuracy is +/- 5 mm and the resolution is 1 mm.

This radar implements the JBUS protocol on an RS485 link. MODBUS instructions of the data logger allow communication with this radar. Every 10 minutes, the measurement is ordered by the data logger. Each logged value is the average of three measuring cycles, each lasting 4 s and separated by 5 s. During the measurement cycles, the instrument makes 16 measurements per second. In addition, the standard deviation of water level, the ambient air temperature, and ~~four-three~~ quality indicators of the distance measurement are recorded. The radar is put on standby by the data logger between each measurement to limit power consumption.

Mis en forme : Surlignage

Mis en forme : Surlignage

Mis en forme : Surlignage

Mis en forme : Surlignage

3.3.5 Conductivity and temperature probes

The Campbell Scientific 547 (CS547) probe with the A547 interface were selected for the measurement of electrical conductivity (EC) and temperature of water. The EC sensor consists of three stainless steel rings mounted in an epoxy tube. Resistance of water in the tube is measured by excitation of the center electrode with positive and negative voltage. Temperature is measured with a thermistor since the EC of a solution is highly dependent on the water temperature. Indeed, as the temperature of a sample increases, the viscosity of the sample decreases, resulting in increased ion mobility. As a result, the observed conductivity of the sample also increases, even if the ion concentration remains constant. To obtain comparable results, the measured values must be reported at a uniform reference temperature, generally 25° C. A simple method of correction of the effect of temperature on the EC measurement is applied assuming a linear relationship between temperature and EC.

The CS 547 probe is resistant to water and corrosion. It is easy to clean. The output signal is analogical (4-20 mA). The range of measurement for EC is from 0.005 to 7 mS/cm and the accuracy is +/- 10% of reading for 0.005 to 0.44 mS/cm and +/- 5% for 0.44 to 7.0 mS/cm. The range of measurement for temperature is from 0°C to 50°C and the accuracy is +/- 0.4 °C.

Every 10 minutes, the measurement is ordered by the data logger. Every measurement is time averaged over 30 records obtained in a time interval of 30 seconds. In addition to the average EC and average temperature of water, the min and max values of EC, the standard deviation of EC and the average value of raw EC (the value with no correction for temperature effect) are recorded.

3.3.6 Automatic river water samplers

Two types of automatic river water samplers were selected for this study: (i) the ISCO 3700 manufactured by Teledyne, and (ii) the PASS (Huon et al., 2017; M-Tropics, 2017), developed by IRD (Institut de Recherche pour le Développement) for low-cost applications with adaptable number and volume of sampling bottles. As shown in Figure 2, automatic water samplers are useful both for measuring SSC and for all subsequent analyses of dissolved and particulate phases (including major ions, nutrients, contaminants, microorganisms, DNA...).

(i) The ISCO 3700 portable sampler is commonly used in hydrological, biogeochemical and suspended sediment studies. It can contain 24 wedge shaped, 1 liter polypropylene bottles or 24 cylindrical, 350 ml glass bottles. The ISCO 3700 allows to perform sequential or composite samples based on time or physical conditions that come from other sensors (e.g. water level, discharge or turbidity). In this study, only sequential samples are taken and the sampling is triggered with external impulses coming from the data logger. The ISCO 3700 features a patented liquid detector. It is equipped with a peristaltic pump which

Mis en forme : Surlignage

Mis en forme : Surlignage

Mis en forme : Surlignage

delivers accurate, repeatable sample volumes time after time. The system includes an automatic compensation for changes in head heights and an automatic suction line rinsing to eliminate sample cross contamination. The pump maintains a suction velocity of 0.66 m/s recommended by ISO standard 5667-10 up to 4.5 m of vertical drop. The suction strainer is generally located relatively low in the river depth to sample any type of flood and any type of suspended particle.

5 In case of exceeding Above some turbidity and water level thresholds, the values of which depend on the site and the season, the data logger will send an impulse to the sampler which will initiate the sampling of a river water sample. If both turbidity and water level thresholds continue to be exceeded and if a time interval is reached since the last sampling, the next sample will be collected. The time interval between two sampling depends mainly on the site and the season.

Mis en forme : Surlignage

10 (ii) The PASS sampler is a more flexible alternative than the ISCO in terms of the number and shape of its containers. Any container in plastic, glass or other material with a top opening can be used. This system is controlled by a Campbell CR200 data logger that controls a pump and 4 stepper motors (2 in X and 2 in Y). This system was completely developed and tested in the M-TROPICS Critical Zone Observatory in Laos (Ribolzi et al, 2017). In this study, the same pump as the ISCO 3700 portable sampler was tested.

15

3.3.7 Turbidimeters

Two types of turbidimeters were selected for this study: (i) a standard instrument manufactured by MJK (the Susix sensor) for turbidity ranging from 0.001 to 9999 FNU/NTU (equivalent to suspended solids ranging from 0.001 to 400 g/l of SiO₂ according to the manufacturer) and (ii) a turbidimeter developed by IUSTI (Institut Universitaire des Systèmes Thermiques Industriels) for the specific case of rivers with very high SSC (up to several hundreds of g/l of SSC).

20

(i) The SuSix sensor uses a multi-beam, pulsed infrared light system (wave length = 860 nm). The beam forming optics for multi-angle detection combined with a progressive algorithm using neural logic constitutes a reliable high quality measurement of turbidity in a single sensor according to the manufacturer. The turbidity measurement complies with ISO standard 7027.

25

The Susix sensor is equipped with a wiper to remove mineral and organic deposits from the optical cells. A SuSix Converter without display (10 - 30 V DC) on which certain parameters can be adjusted (unit, measuring range) is needed between the Susix sensor and the data logger. The standard RS-485 is used for the serial communication between the sensor and the converter with a proprietary protocol. An additional Display Unit for SuSix is installed and connected exceptionally for the configuration of the system and the sensor. During normal operation, the converter without display allows the most economical

30

use possible in terms of power consumption. The converter outputs a 4-20 mA signal to the data logger. The setting of the 4-20 mA output range depends on the turbidity range. In the case of a river with high SSC, the following values are used: 4mA = 0 FNU, 20mA = 9999 FNU. The SuSix sensor is constructed of stainless steel with chromium-dioxide coating and scratch resistant sapphire lenses in a highly polished stainless steel sensor face. The accuracy is +/- 0,1% of reading.

Mis en forme : Surlignage

Mis en forme : Surlignage

The converter is started by the data logger via the relay every 10 minutes. Every measurement lasts for 30 seconds and records 30 values. In addition to the average turbidity, the min and max values of turbidity, the standard deviation of turbidity and raw value of turbidity in mV are recorded. Finally, the converter is switched off via the relay. The wiper for cleaning the sensor is activated when a 12V pulse is received, generated once a day by the data logger.

(ii) The turbidimeter developed by IUSTI, so-called "capteur marseillais", is a sensor made up of a bundle of optical fibers. This sensor which was initially designed for the Draix Observatory has shown great robustness, operating on site without maintenance since July 1994. Four sensors and their electronics are still in operation today. The operating principle of the "capteur marseillais" is described in detail by Bergougnoux (1995), Bergougnoux et al. (1998) and Bellino et al. (2001). The sensor head is made of optical fibers with a diameter of 750 μm . There is an emitting fibre in the centre surrounded by two rings of receiving fibres. The first layer contains 6 receiving fibers, the second layer contains 12 receiving fibers. The sensor consists of a stainless steel head to be immersed in the river, a flexible black polyamide sheath to guarantee good mechanical protection of the optical fibers, a waterproof housing containing the LED and the two photodiodes to which the two families of receiving fibers are connected. An electronic box connected to the fiber optic sensor by 3 BNC connectors of 5 m cable allows the amplification of the signals delivered by the two families of receiving fibers. This electronic box, powered by a 0-12V DC supply, is equipped with 2 analog outputs in voltage between 0 and 5V, compatible with the acquisition system. These devices are located in the main electronics box of the platform (Figure 3). The gains applied to 0-5V analog outputs must be adjusted in relation to the expected turbidity range. The ratio between the signals of the two receiver fibers layers gives a proxy of the turbidity. The accuracy of the turbidity measurement depends on the absorption capacity of the particles, it is about 3% for suspended sediment concentration (SSC) between 1 and 40% in volume. This sensor is limited to the measurement of high turbidity values. In addition, it does not have a cleaning system (e.g. wiper or ultrasonic system). It was therefore decided to install it above the water surface for low flow conditions at a higher position than the Susix sensor so that it would only be submerged during floods, is immersed for a shorter period of time than the Susix sensor, i.e. generally only during the central part of the floods, around the peak of the flood.

Every 10 minutes, the data logger starts up the power supply of the "capteur marseillais" via the relay. Every measurement lasts for 30 seconds and records 30 values. The recorded measurements are the average and standard deviation of the output voltage of each receiver fibers layers as well as the average and standard deviation of the logarithm of the ratio between the signals of the two receiver fibers layers.

Mis en forme : Surlignage

Mis en forme : Surlignage

3.3.8 System characterizing aggregates and flocs SCAF

The System Characterizing Aggregates and Flocs (SCAF) is an optical settling column composed of a series of 16 infrared emitters/receivers regularly spaced every centimeter (Wendling et al., 2015). The device ~~allows-enables to~~ measure the temporal evolution of the vertical profile of optical absorbance during the quiescent settling of a suspension, immediately after its sampling from the river. From the slopes of multiple isoabsorbance lines, settling velocity distributions (SVD) of suspended ~~solids-sediment~~ can be calculated, as well as an indicator of the propensity of particles to flocculate (Wendling et al. 2015). The SCAF is able to operate for a wide range of SSC (from one to several tens of g/l) and settling regimes (free, flocculated, and hindered settling regimes) as illustrated in Legout et al. (2018). The data produced by the SCAF are useful for the understanding and the modelling of the suspended sediment transport in rivers.

Mis en forme : Surlignage

Mis en forme : Surlignage

Mis en forme : Surlignage

Each unit instrument was designed to be incorporated into sequential samplers. The SCAF was adapted to fit into typical 1 l wedge shaped polypropylene bottles used for ISCO 3700 automatic samplers. A round bottle in glass (0.20 m high and 0.035 m in diameter) receiving the suspension sampled from the river (170 ml) and the associated memory card is housed inside the 1 l wedge shaped polypropylene bottle. The optical system is composed of 16 infrared ($\lambda = 980$ nm) emitters and 16 diametrically opposed photo-sensors measuring at a frequency of 210 Hz. Currently, up to 8 units can be placed in a ISCO 3700 sampler dedicated to the SCAF device.

The SCAF measurements begin after a delay of 20 seconds following the impulses emitted by the data logger to the ISCO. The delay corresponds to the time of purge and pumping of the 170 ml of the suspension by the ISCO sampler. Measurements are acquired every 100 ms each value being the average of 10 measurements. The SCAF measurements typically last over 5 hours as shown in Legout et al. (2018). Each SCAF unit is working separately, waiting for the various impulses sequence of the data logger.

3.3.9 Echo sounder

The echo sounder Airmar SS510 was selected to be integrated into RIPLE platform. It allows to perform a continuous measurement of the distance to the riverbed at one point of the cross section. As a result, changes in the geometry of the cross section related to erosion/deposition of sediment or bedload transport can be detected at high temporal resolution, especially during flood events when geomorphic processes may occur. As shown in Figure 2, the echo sounder provides information on the bathymetry of the cross section that is useful for both bedload and hydrometry. The Airmar SS510 sensor, featuring embedded micro-electronics, processes depth and temperature signals inside the sensor, transmits data via two separate communication protocols. The first is a bi-directional interface compliant with the NMEA-0183 protocol and the second is a transmit-only interface with a proprietary protocol using RS-485, which is used in this study. The acoustic frequency used by

the sensor is 235 kHz. The power output from the transmitter is 100 W. There are minimal side lobes for concentrated energy on target. The beam width is 8° and the range of depth is between 0.4 and 200 m with an accuracy of +/-0.03 m for applications in mesoscale rivers (depth typically lower than 5 m) with the sensor tilt with angles of less than 25° from the vertical axis. The accuracy of temperature sensor is +/-0.05°C. The operating temperature ranges from -5°C to 60°C. The sensor is robust with stainless-steel housing and an acoustic window in urethane. The cylindrical shape and the relatively small size (diameter of 0.07 m) of the sensor offers flexibility in types of mounting. An adjustable attachment piece was designed in this study to fix the echo sounder from a river bank or bridge pier. The mechanical integration of the echo sounder into the river is the main problem associated with this instrument as it is potentially exposed to bedload transport and there is not always a hard point available to fix it.

Mis en forme : Surlignage

Every 10 minutes, the measurement is ordered by the data logger via a RS-422 serial communication. By default, the echo sounder returns the measured depth and water temperature every second. Every measurement is time averaged over 30 records. The recorded measurements are the average, min, max and standard deviation of depth as well as the average, min, max and standard deviation of water temperature.

Additionally, the RS-485 interface available on the echo sounder allows to retrieve detailed information on each measurement made by the echo sounder. To do this, it is necessary to establish a connection from a PC to the echo sounder with a converter from FTDI (Future Technology Devices International) USB to RS-485 and open a 921600 baud terminal to display this data.

3.3.10 Hydrophone

The deployment of hydrophones in the watercourse enables a continuous monitoring of the sounds naturally generated by bedload transport in the river (Marineau et al., 2016; Geay et al., 2017a). The hydrophone Colmar GP0190 interfaced with the SDA14 acoustic data recorder were selected in this study. The Colmar GP0190 is a preamplified omnidirectional hydrophone, for application up to 170 kHz (working band: 5 -170.000 Hz). The hydrophone can work up to 1000 m depth. The body of the instrument is in stainless steel. The SDA14 acoustic data recorder was designed by the RTsys company for the acquisition of acoustic signals from passive or pre amplified hydrophones. It integrates four analog receivers, allowing recording four sound sources simultaneously. Its broadband analog inputs allow over 500 kHz (from 3 Hz to over 500 kHz) with a dynamic range greater than 100 dB guaranteeing efficient signal to noise ratio. The embedded digital signal processor allows high speed acquisition, filtering, storage and pre-processing of the acoustic data. Its power consumption is between 600 mW to 2 W in active mode (i.e. during measurements) and less than 1 mW in sleep mode. The system is designed to operate in standalone mode or towed mode. The standalone mode is used in this study. Configuration of the SDA14 acoustic data recorder is possible by connecting a PC via Ethernet and using a web interface.

The SDA14 is controlled by the data logger via an RS-232 link and a 0-5 V output. The triggering of the acquisition is programmed as follows: (i) the data logger sends a 5V pulse to wake up the SDA14; (ii) the SDA14 starts and automatically launches an acquisition (manual mode): a record of 30 seconds at 156 Khz and with a 24 bits resolution is performed. For information, the parameters of duration, frequency and resolution of the acquisition can be modified in the data logger acquisition program; (iii) data are stored in files with .wav format; (iv) a fast Fourier transform algorithm is operated by the SDA14 to compute the acoustic root mean square power in third-Octave bands; (v) the SDA transmits integrative spectrum data (RMS power in third-Octave bands, about twenty points of the spectrum) to the data logger via an RS-232 link, so that useful information on the operation of the hydrophone can then be tele-transmitted to the manager of the platform (it would not be possible to tele-transmit the .wav files by GPRS or 3G as they are too heavy, i.e. 10 MB for 30 seconds of recording) (vi) the data logger puts the SDA14 in standby via the RS-232 link.

Concerning step (iii) on data storage, the SDA14 is equipped with a 128 GB SD memory card and a 2 Tera Bytes (TB) hard disk drive (HDD) (ext4 format). In order to limit the number of on/off times of the HDD (which would severely limit its lifetime), acquisitions are first recorded on an SD memory card and once it is full, the HDD is turned on to empty the SD card. This is called the "hybrid" mode. There is an RS-232 command returning the available memory in the SD card and in the HDD. The data logger will send an alert when the hard disk is almost full. The SDA14, the SD memory card and the HDD are located in the main electronics box of the platform. The transfer time from the 2 TB HDD to a PC would be far too long to be done in the field. A second HDD was therefore purchased to allow rotations to be done: when a disk is almost full (the state of the storage of the HDD is visible in the RIPLE interface), it is simply replaced by the second HDD previously emptied, and the transfer of the full HDD can be done in the laboratory.

The hydrophone is housed in a polyethylene tube next to the other immersed instruments (turbidimeter, conductivity and temperature probes) which are not switched on during hydrophone acquisitions.

3.4 Remote data transmission

The 2G/3G modem Erco&Gener GenPro 325e was selected in this study as it allows the data logger to upload data and images to the FTP server of the laboratory in Grenoble and also to send alert SMS (text) messages. 2G antennas are no longer maintained by access providers in France, so we opted for a modem that can use 3G to remotely transmit data. A SIM (Subscriber Identity Module) card linked to an M2M (Machine to Machine) subscription is inserted into the modem to ensure its operation.

The solution of the private IP address was selected in this study. By making this choice, we accept the dependence on the Loggernet software of Campbell Scientific, which makes it easy to manage the data logger and set up automatic collections of

data. Having a private IP address avoids the possibility of being hacked by a "robot" circulating on the net, which could cause a very significant increase in expenses related to the GPRS subscription. In France, Internet service providers only provide dynamic IP addresses. The Loggernet software was configured to establish a connection with a station whose address is dynamic by accepting the possibility of losing temporarily the connection because of a change in IP address.

5

All the procedure for the data collection and data transfer to the remote FTP server Arcis presented in Figure 7. The modem queries the Internet service provider to obtain a private IP address. The data logger is then connected to the 2G/3G network. The data logger contacts the Loggernet server via port 6786. The Loggernet software running on the Loggernet server recognizes the data logger with its Pakbus number (225 for RIPLÉ), the connection between the data logger and the Loggernet server is then established. It is then possible for the manager of the platform to communicate remotely with the data logger. The Loggernet software can manage different stations, the distinction between different data loggers is made by a unique internal Pakbus address assigned to each station and not by IP address or domain name. In case of a change of IP address, a connection failure occurs until the data logger automatically sends the next tag to the Loggernet server and can communicate once again with it. The IP address is changed on average every 24 hours and also when the modem starts up. It is unlikely that the change of IP address occurs within a few hours after the modem is started. As long as the connection is established, the data logger sends its data tables and control images to the FTP server of the laboratory using FTPClient instructions.

10

15

The advantages of the selected solution are (i) the possibility to use a classic GPRS modem (low energy consumption and low cost), (ii) the management of data flow in case of transmission errors, (iii) the possibility to have a 2-way communication link. The shortcomings are (i) the dependency to the Loggernet package proposed by Campbell Scientific, (ii) the likelihood to lose temporarily the connection if the IP address is changed.

20

The CR6 turns the modem on during the day and off at night to limit the power consumption of the platform. Therefore, no data or alerts can be transmitted during night.

25

3.5 Housing

RIPLÉ platform is organized in several parts: (i) the control block, (ii) submerged instruments and (iii) non-intrusive instruments.

30

(i) The control system (CR6, CDM-A108, 4 SDM-SIO1A), the power supply (battery, solar regulator, 4 relays, 2 PoE injectors), the instrument electronics boxes (SuSix turbidimeter interface, power supply of the "capteur marseillais", A547 interface of the conductivity probe, SDA14 card of the hydrophone) and the remote transmission module (modem, antenna) are grouped in an electrical box (dimensions H = 1.40 m, L = 0.80 m, D = 0.46 m) located on the the river bank at a height

Mis en forme : Surlignage

Mis en forme : Surlignage

sufficient to avoid being flooded ([Figure 3](#)). Everything is grouped into a single element to facilitate the installation and relocation of RIPLE to other sites. In addition, the ISCO automatic sampler is placed next to the electrical box and the solar panel is fixed on a mast or against the structure of a bridge.

5 (ii) Three main submerged instruments (conductivity probe, SuSix turbidimeter, hydrophone) are housed in polypropylene tubes, 3 m long and 0.10 m in diameter, fixed to the bank of the river, parallel to each other. These tubes are clamped between metal profiles at 3 points (top, middle and bottom of the tubes). The metal profiles are themselves anchored in the bank of the river (bedrock or large blocks) using threaded rods. The 3 polypropylene tubes are perpendicular to the direction of the flow in the river (see [Figure 4](#)). The instruments are installed within the tubes using PVC pieces of the inner diameter of
10 the tubes that are machined to allow the sensors to be inserted. These PVC pieces, connected to the top of the pipes by 4 mm diameter threaded rods, prevent the movement of the sensors inside the pipes, allow the sensors to be easily removed without human intervention in the river and allow to put the sensors back to the same location. The lower end of the tubes is at a level low enough to ensure that the instruments are submerged during low water periods.

15 In addition, the "capteur marseillais", which is composed of a waterproof box including the LED source and photodiodes and a 1.5 m long sheath including the optical fibers, are fixed to the outside of the polypropylene tubes using cable ties. The dimensions of the box and the length of the optical fibers mean that this instrument cannot be housed inside the polypropylene tubes and the optical fibers heads cannot be lowered to the lower end of the tubes. The measurement is made at a higher level in the water column than the SuSix turbidimeter. The flexible plastic tube that allows ISCO to collect water and suspended
20 sediment from the river is also attached to the polypropylene tubes using cable ties. The end of the flexible tube is positioned very close to the SuSix turbidimeter, at the same level in order to have a maximum correspondence between the two measurements. The other submerged instrument that is not installed within the polypropylene tubes is the echo sounder. This one has a specific support that has been designed to be fixed to a vertical wall (bridge pier for example) by adjusting the angle of orientation of the instrument with respect to the vertical. Finally, a staff gauge is installed in the cross section near the water
25 level radar.

(iii) The four non-intrusive instruments used for hydrometric purposes are fixed on masts for both cameras (control, LSPIV) and on extendible mounting brackets for both radars (water level, water surface velocity) as shown in [Figure 4](#). The brackets are easily movable to facilitate radar maintenance. These devices (masts or mounting brackets) are attached to the
30 structure of a bridge for example. The velocity radar should preferably be placed in the center of the cross section, in the zone of highest velocities. The cameras must be located on the banks at a level high enough to see the full width of the river and part of the banks.

4 Control software

The data logger controlling program is written in CRBasic programming language, the proprietary format of Campbell Scientific. As shown in [Figure 5](#), there is a main program that reads a configuration file, initializes the instruments and controls two families of subprograms: those which are active every 10 minutes or every hour.

The subprograms that are active every 10 minutes control all instruments except the control camera. When the water level and turbidity conditions are exceeded and the time since the last sample exceeds a certain interval set by the user, the first automatic sampler is launched. A SCAF measurement is also started, preferably using a second automatic sampler dedicated exclusively to SCAF measurements. Similarly, when a water level condition is exceeded and the time since the last video shot exceeds a certain interval set by the user, the LSPIV camera records a film sequence. The other subprograms that are called at an hourly frequency are only active during day time. This concerns the operation of the modem, image capture by the control camera, image and data transmission, SMS message sending in case of alerts (low battery voltage, full ISCO sampler, etc.).

RIPLE platform is interfaced with the rest of the world via the FTP server, which allows exchanges between the interface (see section 5) and the platform as shown in [Figure 6](#). The procedure for the operation of data storage and transfer can be illustrated by [Figure 7](#).

Concerning specifically the control camera, we use the data logger as an FTP server, on which the camera places an image every hour. The data logger then transmits this image to the FTP server of the laboratory in Grenoble. Since the Loggernet software is not able to automatically collect files other than data tables, the data logger must therefore perform PUSH on the FTP of the laboratory server to retrieve the control images (the data logger can be both server and FTP client). The advantage of this method is that a traditional GPRS modem can be used. A drawback is that the images have to pass through the data logger storage memory but this does not have much impact on performance and consumption of the control system.

5 User interface

A solution with a remote web server was chosen, i.e. it is the server in the lab that generates a web page from the collected data. The RIPLE user interface is developed in R using the Shiny package (JavaScript elements for web interfaces) and dygraphs (graphics). An executable file for this application has been generated to display the results on a dedicated web page to avoid having to install RStudio and to have access to the interface from any terminal equipped with an internet connection.

5.1 Data visualization

By default, the interface starts on the "Data visualization" menu, in which all the data transmitted by RIPLE platform can be seen (the display may take a little time due to the amount of data). It is possible to choose the type of time series to display:

- Fixed time series (default): these are 4 graphs displaying the more common data as shown in [Figure 8](#), the water level being present in each of these graphs as a common reference. There is a first graph with water level and surface water velocity, a second graph with water level and turbidity, a third graph with water level and water temperature, a fourth graph with water level and water electrical conductivity. These graphs gives an overview of how the station works for the basic variables.

- Customized time series (optional): there is a single graph on which it is possible to add two curves on each y axis, among all the variables transmitted by RIPLE platform as illustrated by [Figure 9](#).

All the data that can be displayed is read from the Riple_DATA.txt file ([Figure 6](#)) that is located on the FTP server in Grenoble, i.e. the file uploaded by RIPLE platform.

For each type of time series, it is possible:

- To modify the time window to be displayed. There are four options: the last day, the last week, the last month or a manual selection of start and end dates.

- To download the displayed data in an ASCII file in the same format as the one originally produced by the CR6. It is possible to select either only specific variables or all variables as in the file uploaded by RIPLE.

5.2 Control images

A second menu “Control images” allows to remotely view the RIPLE platform by displaying the control images that are stored on the FTP server in the laboratory. For example, it allows to visualize the hydraulic behaviour during floods and at low flows (see [Figure 10](#)). Only fully transmitted images are accessible by default. It is still possible to consult all the control images later on, after having retrieved manually the control images during field visits. All control images are thus stored in an archive directory independent on the FTP server.

5.3 Supervision

The “Supervisions menu” allows to remotely control the proper functioning of the platform. The data displayed in this menu are read from the Riple_SAV.txt file that RIPLE uploads to the FTP server ([Figure 6](#)). These are technical variables concerning the control unit (reference identifiers, OS version, internal battery voltage, PakBus address), the name of the current program of the control unit, the status of the power supply and temperature in the electrical cabinet of RIPLE platform, the data collected (number of measurement, date and time of measurement, watchdog errors, skipped scans, error with the SDA14 card, status of the SD memory card and of the HDD of the hydrophone).

For example, it is possible to check the status of the power supply of the platform by looking at the battery voltage time series ([Figure 11](#)). The temperature measured by the data logger, i.e. the temperature inside the cabinet, must also be controlled, especially in winter (be careful if air temperature is below -10 °C) and in summer (be careful if air temperature is

Mis en forme : Surlignage

above 45°) because the battery is also present in the electrical box. Based on these thresholds, a SMS alert is sent and the fan is triggered. In addition, if a “skippedScan error message” appears, it means that the measurement time of some instruments should be reduced to allows the data logger to perform all the measurements in one cycle.

5.4 Configuration

- 5 Some parameters of the RIPLE platform can be configured remotely, from the "Configuration menu" of the interface (see [Figure 12](#) ~~Figure 12~~). This menu is only used by RIPLE's main "administrators". To modify other variables, e.g. duration of a scan, measurement time on each instrument, it is necessary to modify the Campbell program of the data logger. It is also possible to do it remotely but it is preferable that it remains exceptional.

6 Case study

- 10 To date, RIPLE platform has been tested on [two river sites located in the French Alps](#) ~~two rivers of the French Alps~~: the Romanche in Bourg d'Oisans (45.1158°N, 6.0134°E, elevation 710 m) from September 2016 to July 2018 and the Galabre in La Robine sur Galabre (44.1586°N, 6.2360°E, elevation 680 m) since October 2018. Photos of the installation sites are shown in Figure 13.

- 15 The first site corresponds to a large embanked river typical of anthropized alpine valleys: presence of dams upstream and dikes giving rise to a very rectilinear river. The width of the river is about 30 m, the depth is typically between 0.5 and 1 m at low flows. SSC typically changes between 0 and 10 g/l all over the year. The platform has benefited from the existing hydrometric station managed by the Electricité De France (EDF) company, including regular discharge measurements and a reference stage-discharge rating curve.

- 20 The second site corresponds to [an ungauged site located in](#) a more pristine river in the Southern Alps where sediment loads can be high (max SSC ~ 360 g/l) (Esteves et al., 2019), due to the presence of numerous active badland areas. The width of the river is about 10 m, the depth is typically 0.1-0.2 m at low flows. The station also benefited from a hydrosedimentary station located 2,5km upstream (Esteves et al., 2019), managed since 2007 by the IGE and belonging to the Draix-Bléone observatory and the research infrastructure OZCAR (Gaillardet et al., 2018).

- 25 During these two years of testing on two sites, the platform has worked properly, recording a large data set that will be of great interest for the understanding of sediment transport processes in alpine rivers. [Figure 14 shows the raw data measured by 6 sensors for the event of 8 to 9 August 2017 on the Romanche river in Bourg d'Oisans. The data are provided by the following sensors: water level radar, surface velocity radar, Susix MJK turbidity sensor, conductivity probe, echo sounder and hydrophone. Figure 14 focuses on the same flood event as Figure 9 which was only a screenshot of the user web-interface.](#)

Mis en forme : Surlignage

Mis en forme : Surlignage

Mis en forme : Surlignage

Mis en forme : Surlignage

Mis en forme : Surlignage

Mis en forme : Surlignage

Mis en forme : Surlignage

5 Additionally, the videos (provided by the Large Scale Particle Image Velocimetry digital camera), photos (provided by the control camera), the two text files "Riple_DATA.txt" (data from all instruments) and "Riple_SAV.txt" (data that enable to remotely control the proper functioning of the platform), and the raw data of the hydrophone are in open access for this flood event through this link: https://doi.osug.fr/data/public/RIPLÉ_8to9August2017/. This provides a comprehensive picture of the data produced by the station in terms of formats, file sizes and data quality.

Mis en forme : Surlignage

Mis en forme : Surlignage

The use of RIPLE data is in progress. For example, a current work is being done to combine radar surface velocity measurements with LSPIV velocity measurements to estimate the mean channel velocity and identify the moments when the geometry of the river is significantly modified by deposition and erosion processes.

10 7 Conclusions and outlook

The characteristics of the presented platform dedicated to monitoring erosion in mesoscale rivers result from a fifteen-year expertise in hydrometric and sediment measurements within the IGE laboratory and more broadly within the research laboratories in the Grenoble and Lyon communities and local companies such as EDF. The platform has been designed to be applied preferably to rivers in mountainous areas, but ~~much of the system~~ is adjustable and transferable to lowland rivers.

Mis en forme : Surlignage

15 Through this study, emphasis was put on water discharge as this elementary variable is not trivial to monitor in situ. Further developments are needed to improve this measurement, especially in rivers where geomorphological processes are very active. A future objective is to produce methods for accessing continuously and directly to discharge data, with a very limited use of gauging and human resources. In addition to the set of measurements provided by the presented platform, a major challenge for the next decade, will be the development of methods allowing to monitor continuously the bathymetry within the river cross section.

Mis en forme : Surlignage

25 For fine sediment transport, the generalization of the use of the turbidimeter associated with automatic river water sampling for the calibration of turbidity-SSC relationships has allowed a fairly rapid extension of the monitoring of suspended sediment fluxes during the last decades. However, it is still necessary to improve the spatialization of this measurement within the river cross section, particularly in the case of coarse silt or sandy sized particles, which often do not have a homogeneous concentration profile within the water column but rather an increasing concentration profile with depth. It seems necessary to develop non-intrusive technologies for the measurement of suspended sediment fluxes to increase the robustness of the measurement and reduce in situ maintenance. Furthermore, the measurement of the physical characteristics of particles is important because it provides information on transport capacity and deposition processes, on the spatial origin of eroded particles and indicates the propensity of particles to transport adsorbed substances (nutrients, metals, organic products, micro-organisms, micro plastics, etc.). These measurements must be performed under conditions that ~~most closely resemble those of~~ are close to the in situ environment to avoid subsequent flocculation/disaggregation processes.

Mis en forme : Surlignage

Concerning coarse sediment transported by bedload, recent metrological developments make it possible to start considering continuous and high frequency monitoring of fluxes and physical characteristics of particles (size distribution) using proxies and inversion models. Passive acoustic and passive seismic methods are experimenting on-going developments. The first results point to a promising future, although the difficulty lies in validating these methods. Indeed, in situ sampling of transported coarse particles is difficult to carry out and cannot be automated. In this study, the choice was made to integrate passive acoustics technology. These measurements of bedload correspond to a strong demand from the scientific community and more generally from the society.

Finally, water quality is partially taken into account in the RIPLE platform through the measurement of electrical conductivity and water temperature and also through the automatic sampling of river water which allows, after a filtration step in the laboratory, to carry out any type of analysis from the filtered phase, so-called dissolved phase (chemical, microbiological, DNA, etc.). Automatic sampling makes it possible to collect water during flood periods or during low water conditions. The collected samples are also useful for performing analyses (chemical, microbiological, DNA, etc.) on the particulate phase.

In the end, we want to show that RIPLE platform is a unifying tool that contributes to multidisciplinary studies on understanding the functioning of the Critical Zone. This is the way this tool has been designed and will continue to evolve. RIPLE platform is in constant evolution: new innovative instruments are integrated when they have been validated and are in a development phase that allows their integration. Recent examples of integration are the SCAF and the hydrophone. **Remote sensing instruments (e.g. radiometers) could also be added to perform non-intrusive turbidity measurements.** RIPLE is an autonomous and low-power instrument platform, which transmits real time data to a remote server and can be controlled remotely enabling to fully exploit its potential. The visualization software interface that has been developed allows an easy follow-up of all measured variables and a beginning of data quality control.

The CRITEX project has made it possible to purchase an aquatic drone, the FoRiver 1 manufactured by River Drone, which offers the opportunity to plan spatial campaigns of certain variables at “hot moments” (low water level, flood, hydraulic flushing). The **aquatic drone** can thus carry **submerged instruments on-board (e.g. conductivity probe, turbidimeter, echosounder, hydrophone, automatic sampler)** to perform measurement campaigns of the same variables as those measured by RIPLE platform at other points in the cross section or at other points in the profile along the river at different moments.

Author contribution

Yoann Michielin developed and implemented the integration of the RIPLE platform and developed the visualization interface. Michel Esteves and Guillaume Nord supervised the work of Yoann Michielin. Thomas Geay contributed to the integration of the hydrophone into RIPLE. Cédric Legoût and Bernard Mercier contributed to the integration of SCAF into RIPLE. Alexandre

Mis en forme : Surlignage

Mis en forme : Surlignage

Mis en forme : Surlignage

Mis en forme : Surlignage

Hauet contributed to the integration of the control camera and the LSPIV camera into RIPLE. Yoann Michielin and Guillaume Nord supervised the installation of RIPLE on the Romanche site, with the help of the IGE technical service. Romain Biron and Guillaume Nord supervised the installation of RIPLE on the Galabre site, with the help of the IGE technical service. Romain Biron and Guilhem Freche are responsible for the maintenance of RIPLE. Romain Biron supervises RIPLE on a daily basis. Guillaume Nord wrote the manuscript using as main basis the technical documentation of the platform written by Yoann Michielin. All the co-authors reviewed the document and contributed more specifically to certain sections.

Competing interests

The authors declare that they have no conflict of interest.

Acknowledgments

This work was supported by the EQUIPEX CRITEX project (grant no. ANR-11-EQPX-0011, PIs J. Gaillardet and L. Longuevergne). Yoann Michielin benefited from an engineer contract from the CRITEX project. The work of Thomas Geay was funded by a research program between Electricité de France (EDF) and Université de Grenoble (GIPSA-Lab / IGE). The development of this platform was carried out with the support of the technical service of the IGE. The deployment of RIPLE platform in the field was also supported by Labex OSUG@2020 (ANR10 LABX56) and the Institut National des Sciences de l'Univers (INSU/CNRS). Most of the instruments presented in this study are the property of the CNRS. They are part of the national park of instruments for the study of the Critical Zone set up as part of the CRITEX project (<https://www.critex.fr/>).

The authors thank Norbert Silvera for his help in integrating the PASS sampler into the RIPLE platform. The authors also thank the French research infrastructure OZCAR (Observatoires de la Zone Critique, Applications et Recherche), the Draix-Bléone observatory, EDF, the AD Isère Drac Romanche and the department of Alpes de Haute Provence for allowing RIPLE platform to be installed on the Romanche and Galabre rivers.

References

- Aigner, J., A. Kreisler, R. Rindler, C. Hauer, and Habersack, H.: Bedload pulses in a hydropower affected alpine gravel bed river, *Geomorphology*, 291, 116–127, <https://doi.org/10.1016/j.geomorph.2016.05.015>, 2017.
- Bellino I., Bergougnoux L., Misguich-Ripault J., and Firpo J-L.: Particle size effects on an optical fiber sensor response, *Powder Technol.*, 115, 68-74, 2001.
- Bergougnoux., L. : Diagnostic optique pour la mesure de concentration de matières en suspension, Ph.D. thesis, Aix-Marseille Université, ISBN : 9781847190970, 1995.
- Bergougnoux L., Misguich-Ripault J., and Firpo J-L: Characterization of an optical fiber bundle sensor, *Rev. Sci. Instrum.* 69, 1985-1990, 1998.

- Borga, M., Stoffel, M., Marchi, L., Marra, F., and Jakob, M.: Hydrogeomorphic response to extreme rainfall in headwater systems: Flash floods and debris flows, *J. Hydrol.*, 518, 194–205, <https://doi.org/10.1016/j.jhydrol.2014.05.022>, 2014.
- Brantley, S. L., DiBiase, R. A., Russo, T. A., Shi, Y., Lin, H., Davis, K. J., Kaye, M., Hill, L., Kaye, J., Eissenstat, D. M., Hoagland, B., Dere, A. L., Neal, A. L., Brubaker, K. M., and Arthur, D. K.: Designing a suite of measurements to understand the critical zone, *Earth Surf. Dynam.*, 4, 211–235, <https://doi.org/10.5194/esurf-4-211-2016>, 2016.
- 5 Camenen, B., Naudet, G., Dramais, G., Coz, J.L.e., and Paquier, A.: A multi-technique approach for evaluating sand dynamics in a complex engineered Piedmont river system. *Sci. Total. Environ.* 657, 485–497, <https://doi.org/10.1016/j.scitotenv.2018.11.394>, 2019.
- Clauer, C. R., Kim, H., Deshpande, K., Xu, Z., Weimer, D., Musko, S., Crowley, G., Fish, C., Nealy, R., Humphreys, T. E., Bhatti, J. A., and Ridley, A. J.: An autonomous adaptive low-power instrument platform (AAL-PIP) for remote high-latitude geospace data collection, *Geosci. Instrum. Method. Data Syst.*, 3, 211–227, <https://doi.org/10.5194/gi-3-211-2014>, 2014.
- 10 Comiti, F., Marchi, L., Macconi, P., Arattano, M., Bertoldi, G., Borga, M., Brardinoni, F., Cavalli, M., D’Agostino, V., Penna, D., and Theule, J.: A new monitoring station for debris flows in the European Alps: first observations in the Gadria basin, *Nat Hazards*, 73, 1175–1198, <https://doi.org/10.1007/s11069-014-1088-5>, 2014.
- 15 Corenblit, D., Tabacchi, E., Steiger, J., and Gurnell, A.M.: Reciprocal interactions and adjustments between fluvial landforms and vegetation dynamics in river corridors: A review of complementary approaches, *Earth-Science Reviews*, 84, 56–86, <https://doi.org/10.1016/j.earscirev.2007.05.004>, 2007.
- Costa, J. E., Cheng, R. T., Haeni, F. P., Melcher, N., Spicer, K. R., Hayes, E., Plant, W., Hayes, K., Teague, C., and Barrick, D.: Use of radars to monitor stream discharge by noncontact methods, *Water Resour. Res.*, 42, W07422, <https://doi.org/10.1029/2005WR004430>, 2006.
- 20 Esteves, M., Legout, C., Navratil, O., and Evrard, O.: Medium term high frequency observation of discharges and suspended sediment in a Mediterranean mountainous catchment, *Journal of Hydrology*, 568, 562–574, <https://doi.org/10.1016/j.jhydrol.2018.10.066>, 2019.
- Frings, R.M., Gehres, N., Promny, M., Middelkoop, H., Schüttrumpf, H., and Vollmer, S.: Today’s sediment budget of the Rhine River channel, focusing on the Upper Rhine Graben and Rhenish Massif, *Geomorphology*, 204, 573–587, <https://doi.org/10.1016/j.geomorph.2013.08.035>, 2014.
- 25 Gaillardet, J., Braud, I., Hankard, F., et al.: OZCAR: the French network of critical zone observatories, *Vadose Zone J.*, 17, 180067, <https://doi.org/10.2136/vzj2018.04.0067>, 2018.
- Geay, T., Belleudy, P., Gervaise, C., Habersack, H., Aigner, J., Kreisler, A., Seitz, H. and Laronne, J. B.: Passive acoustic monitoring of bed load discharge in a large gravel bed river, *J. Geophys. Res. Earth Surf.*, 21, <https://doi.org/10.1002/2016JF004112>, 2017a.
- 30 Geay, T., Belleudy, P., Laronne, J. B., Camenen, B., and Gervaise, C.: Spectral variations of underwater river sounds, *Earth Surf. Proc. Land.*, 42, 2447–2456, <https://doi.org/10.1002/esp.4208>, 2017b.

- Gimbert, F., Fuller, B. M., Lamb, M. P., Tsai, V. C. and Johnson, J. P. L.: Particle transport mechanics and induced seismic noise in steep flume experiments with accelerometer-embedded tracers, *Earth Surf. Process. Landforms*, 44, 219-241, <https://doi.org/10.1002/esp.4495>, 2018.
- Gray, J. R., and Simões, F. J. M.: Estimating Sediment Discharge, *Sediment. Eng.*, 1067–1088, <https://doi.org/10.1061/9780784408148.apd>, 2008.
- Gray, J.R., and Gartner, J.W.: Technological advances in suspended-sediment surrogate monitoring. *Water Resources Research*, 45, <https://doi.org/10.1029/2008WR007063>, 2009.
- Gray, J. R., Laronne, J. B. and Marr, J. D. G.: Bedload-surrogate monitoring technologies: U.S. Geological Survey Scientific Investigations Report 2010–5091, <https://doi.org/10.3133/sir20105091>, 2010.
- Griffiths, R.E., Topping, D.J., Anderson, R.S., Hancock, G.S., and Melis, T.S.: Design of a sediment-monitoring gaging network on ephemeral tributaries of the Colorado River in Glen, Marble, and Grand Canyons, Arizona: U.S. Geological Survey Open File Report 2014–1137, <http://dx.doi.org/10.3133/ofr20141137>, 2014.
- Hauet, A., Kruger, A., Krajewski, W.F., Bradley, A., Muste, M., and Creutin, J.D.: Experimental system for real-time discharge estimation using an image-based method, *Journal of Hydrological Engineering*, 13, 105–110, 2008.
- Julien, P.-Y. (Eds.): *Erosion and sedimentation*, Cambridge University Press, <https://doi.org/10.1017/CBO9781139174107>, 1995.
- Huon S., Evrard O., Gourdin E., Lefevre L., Bariac T., Reyss J.L., des Tureaux T.H., Sengtaheuanghoung O., Ayrault S., and Ribolzi O.: Suspended sediment source and propagation during monsoon events across nested sub-catchments with contrasted land uses in Laos. *J Hydrol: Regional Studies*, 9, 69–84, 2017.
- International Organization for Standardization, 2005: *Liquid flow measurement in open channels – Sediment in streams and canals – Determination of concentration, particle size distribution and relative density. ISO 4365*. Geneva.
- International Organization for Standardization, 2007: *Hydrometry – Measurement of liquid flow in open channels using current-meters or floats. ISO 748:2007*. Geneva.
- Le Boursicaud, R., Pénard, L., Hauet, A., Thollet, F., and Le Coz, J.: Gauging extreme floods on YouTube: application of LSPIV to home movies for the post-event determination of stream discharges, *Hydrol. Process.*, 30, 90–105. <https://doi.org/10.1002/hyp.10532>, 2016.
- Le Coz, J., Hauet, A., Pierrefeu, G., Dramais, G., and Camenen, B.: Performance of image-based velocimetry (LSPIV) applied to flash-flood discharge measurements in Mediterranean rivers, *J. Hydrol.*, 394, 42–52, 2010.
- Leduc, P., Ashmore, P., and Sjogren, D.: Technical note: Stage and water width measurement of a mountain stream using a simple time-lapse camera, *Hydrol. Earth Syst. Sci.*, 22, 1-11, <https://doi.org/10.5194/hess-22-1-2018>, 2018.
- Lee, C., and Foster, G.: Assessing the potential of reservoir outflow management to reduce sedimentation using continuous turbidity monitoring and reservoir modelling, *Hydrological Processes*, 27, 1426–1439, <https://doi.org/10.1002/hyp.9284>, 2013.

Mis en forme : Anglais (États-Unis)

Mis en forme : Surlignage

Mis en forme : Surlignage

Mis en forme : Surlignage

Mis en forme : Surlignage

Mis en forme : Surlignage

- Legout C., Droppo I.G., Coutaz J., Bel C., and Jodeau M.: Assessment of erosion and settling properties of fine sediments stored in cobble bed rivers: the Arc and Isère alpine rivers before and after reservoir flushing, *Earth Surface Processes and Landforms*, 43, 1295-1309, <https://doi.org/10.1002/esp.4314>, 2018.
- Levesque, V.A., and Oberg, K.A., 2012: Computing discharge using the index velocity method: U.S. Geological Survey Techniques and Methods 3–A23, <https://doi.org/10.3133/tm3A23>, 2012.
- 5 Mano, V. : Processus fondamentaux conditionnant les apports de sédiments fins dans les retenues - optimisation des méthodes de mesure et modélisation statistique, Ph.D. thesis, Université Joseph-Fourier, 2008. Available at <https://tel.archives-ouvertes.fr/tel-00365349> (tested on 02/10/2019).
- Marineau, M. D., Wright, S. A. and Gaeuman, D.: Calibration of sediment-generated noise measured using hydrophones to bedload transport in the Trinity River, California, USA, in: *Proceedings of River Flow Conf.*, Iowa City, USA, 11-14 July 2016, 1519–1526, 2016.
- Morlock, S.E., Nguyen, H.T., and Ross, J.H.: Feasibility of Acoustic Doppler Velocity Meters for the Production of Discharge Records from U.S. Geological Survey Streamflow-Gaging Stations: U.S. Geological Survey Water-Resources Investigations Report 2001-4157, <https://doi.org/10.3133/wri20014157>, 2002.
- 15 Morris, G.L., and Fan, J. (Eds.): *Reservoir sedimentation handbook: design and management of dams, reservoirs, and watersheds for sustainable use*, McGraw-Hill, New York, USA, 1998.
- Morschhauser, A., Haseloff, J., Bronkalla, O., Müller-Bretschneider, C., and Matzka, J.: A low-power data acquisition system for geomagnetic observatories and variometer stations, *Geosci. Instrum. Method. Data Syst.*, 6, 345-352, <https://doi.org/10.5194/gi-6-345-2017>, 2017.
- 20 **M-Tropics, Service de données OMP (SEDOO): Stations and acquisition parameters, [online] Available from https://mtropics.obs-mip.fr/stations-and-acquisition-parameters/laos-lak-sip-catchment/?noredirect=en_US (Accessed 16 January 2020), 2017.**
- Mueller, P., Thoss, H., Kaempf, L., and Güntner, A.: A Buoy for Continuous Monitoring of Suspended Sediment Dynamics, *Sensors*, 13, 13779-13801, <https://doi.org/10.3390/s131013779>, 2013.
- 25 Musko, S. B., Clauer, C. R., Ridley, A. J., and Kenneth, L. A.: Autonomous low-power magnetic data collection platform to enable remote high latitude array deployment, *Rev. Sci. Instrum.*, 80, <http://dx.doi.org/10.1063/1.3108527>, 2009.
- Muste, M., Fujita, I., Hauet, A.: Large-scale particle image velocimetry for measurements in riverine environments. *Water Resources Research*, 44, <http://dx.doi.org/10.1029/2008WR006950>, 2008.
- Nord, G., Gallart, F., Gratiot, N., Soler, M., Reid, I., Vachtman, D., Latron, J., Martín Vide, J. P., and Laronne, J. B.: Applicability of acoustic Doppler devices for flow velocity measurements and discharge estimation in flows with sediment transport, *J. Hydrol.*, 509, 504–518, <https://doi.org/doi:10.1016/j.jhydrol.2013.11.020>, 2014.
- 30 Navratil, O., Esteves, M., Legout, C., Gratiot, N., Némery, J., Willmore, S., and Grangeon, T.: Global uncertainty analysis of suspended sediment monitoring using turbidimeter in a small mountainous river catchment, *J. Hydrol.*, 398, 246–259, <https://doi.org/10.1016/j.jhydrol.2010.12.025>, 2011.

Mis en forme : Surlignage

Mis en forme : Surlignage

Mis en forme : Surlignage

Mis en forme : Surlignage

Mis en forme : Surlignage

Mis en forme : Surlignage

Mis en forme : Surlignage

- Owens, P.N., Batalla, R.J., Collins, A.J., Gomez, B., Hicks, D.M., Horowitz, A.J., Kondolf, G.M., Marden, M., Page, M.J., Peacock, D.H., Peticrew, E.L., Salomons, W., and Trustrum, N.A.: Fine-grained sediment in river systems: environmental significance and management issues, *River Res. Appl.*, 21, 693–717, <https://doi.org/10.1002/rra.878>, 2005.
- Peters, N., Oppenheimer, C., and Kyle, P.: Autonomous thermal camera system for monitoring the active lava lake at Erebus volcano, Antarctica, *Geosci. Instrum. Method. Data Syst.*, 3, 13–20, <https://doi.org/10.5194/gi-3-13-2014>, 2014.
- Renwick, W.H., Smith, S.V., Bartley, J.D., and Buddemeier, R.W.: The role of impoundments in the sediment budget of the conterminous United States, *Geomorphology*, 71, 99–111. <https://doi.org/10.1016/j.geomorph.2004.01.010>, 2005.
- Rasmussen, P.P., Gray, J.R., Glysson, G.D., and Ziegler, A.C.: Guidelines and procedures for computing time-series suspended-sediment concentrations and loads from in-stream turbidity-sensor and streamflow data: U.S. Geological Survey Techniques and Methods 3-C4, book 3, chap. 4, <https://doi.org/10.3133/tm3C4>, 2009.
- Recking, A., Liébault, F., Peteuil, C., and Jolimet, T.: Testing bedload transport equations with consideration of time scales, *Earth Surf. Process. Landforms*, 37, 774–789, <https://doi.org/10.1002/esp.3213>, 2012.
- Rennie, C. D., Millar, R. G. and Church, M. A.: Measurement of bed load velocity using an acoustic Doppler current profiler, *J. Hydraul. Eng.*, 128, 473–483, [https://doi.org/10.1061/\(ASCE\)0733-9429\(2002\)128:5\(473\)](https://doi.org/10.1061/(ASCE)0733-9429(2002)128:5(473)), 2002.
- Rennie, C. D., Vericat, D., Williams, R. D., Brasington, J. and Hicks, M.: Calibration of acoustic doppler current profiler apparent bedload velocity to bedload transport rate, in: *Gravel-Bed Rivers Process Disasters*, edited by: Tsutsumi, D., and Laronne, J. B., John Wiley & Sons Ltd., 209–233, <https://doi.org/10.1002/9781118971437.ch8>, 2017.
- Ribolzi, O., Evrard, O., Huon, S., de Rouw, A., Silvera, N., Latschack, K.O., Souleuth, B., Lefèvre, I., Pierret, A., Lacombe, G., Sengtaheuanghoung, O., and Valentin, C.: From shifting cultivation to teak plantation: Effect on overland flow and sediment yield in a montane tropical catchment, *Sci. Rep.*, 7:3987, <https://doi.org/10.1038/s41598-017-04385-2>, 2017.
- Roth, D. L., Brodsky, E. E., Finnegan, N. J., Rickenmann, D., Turowski, J. M., and Badoux, A.: Bed load sediment transport inferred from seismic signals near a river, *J. Geophys. Res. Earth Surf.*, 121, 725–747, <https://doi.org/10.1002/2015JF003782>, 2016.
- Sobieszczyk, S., Urich, M.A., and Bragg, H.M: Major turbidity events in the North Santiam River basin, Oregon, water years 1999–2004: U.S. Geological Survey Scientific Investigations Report 2007–5178. <https://pubs.usgs.gov/sir/2007/5178/index.html>, 2007.
- Stumpf, A., Augereau, E., Delacourt, C., and Bonnier, J.: Photogrammetric discharge monitoring of small tropical mountain rivers: A case study at Rivière des Pluies, Réunion Island, *Water Resour. Res.*, 52, 4550–4570, <https://doi.org/10.1002/2015WR018292>, 2016.
- Thollet F., Le Coz J., Dramais G., Nord G., Le Boursicaud R., Jacob E., Buffet A.: Streamflow monitoring at stage / velocity radar stations using the index velocity method, *La Houille Blanche*, 5, 9–15, <https://doi.org/10.1051/lhb/2017038>, 2017.
- Thorne, P. D., and Foden, D. J.: Generation of underwater sound by colliding spheres, *J. Acoust. Soc. Am.*, 84, 2144–2152, <https://doi.org/10.1121/1.397060>, 1988.

Tomkins, K.M.: Uncertainty in streamflow rating curves: methods, controls and consequences, *Hydrological Processes* 28, 464–481, <https://doi.org/10.1002/hyp.9567>, 2012.

Tsai, V. C., Minchew, B., Lamb, M. P. and Ampuero, J.-P.: A physical model for seismic noise generation from sediment transport in rivers, *Geophys. Res. Lett.*, 39, 2–7, <https://doi.org/10.1029/2011GL050255>, 2012.

- 5 Walling, D.E., and Fang, D.: Recent trends in the suspended sediment loads of the world's rivers, *Global and Planetary Change* 39, 111–126, [https://doi.org/10.1016/S0921-8181\(03\)00020-1](https://doi.org/10.1016/S0921-8181(03)00020-1), 2003.

Welber, M., Le Coz, J., Laronne, J. B., Zolezzi, G., Zamler, D., Dramais, G., Hauet, A., and Salvaro, M.: Field assessment of noncontact stream gauging using portable surface velocity radars (SVR), *Water Resour. Res.*, 52, 1108–1126, <https://doi.org/10.1002/2015WR017906>, 2016.

- 10 Wendling V., Gratiot N., Legout C., Droppo I., Coulaud C. and Mercier B.: Using an optical settling column to assess suspension characteristics within the free, flocculation and hindered settling regimes, *Journal of Soils and Sediments*, 15, 1991–2003, <https://doi.org/10.1007/s11368-015-1135-1>, 2015.

World Meteorological Organization (Ed.): *Manual on stream gauging, volume 1 Fieldwork*, World Meteorological Organization, WMO-No. 1044, Geneva, Switzerland. 248 pp., 2010.

15

20

25

30

Tables and Figures

Table 1: Selection of instruments integrated in RIPLE platform. The “ni” exponent in the column “Instrument name” means non-intrusive instruments.

Compartment	Variable	Physical principle of measurement	Instrument name	Manufacturer	Integration in RIPLE [1: yes, opt: optional]
hydrometry	Water level	Time of flight radar	cruzo ⁿⁱ	Paratronic	1
	Surface water velocity	Doppler radar	RG30 ⁿⁱ	Sommer	1
	Surface Velocity field	Camera + LSPIV* analysis	P1435-LE ⁿⁱ	Axis	1
water quality	Conductivity and Temperature of water	Conductivity probe	CS547	Campbell Scientific	1
	Properties of the dissolved phase	Automatic water sampling (24 x 1 liter polypropylene or 350 ml glass)	3700	Teledyne ISCO	1
		Automatic water sampler (variable size and number of bottles)	PASS	IRD	opt
suspended sediment	Turbidity	Optic backscattering (standard)	susix	MJK	1
	High Turbidity (concentration 10 -> 500g/l)	Optic backscattering (laboratory development)	capteur marseillais	IUSTI Marseille	1
	Suspended sediment concentration	Automatic water sampling (24 x 1 liter polypropylene or 350 ml glass)	3700	Teledyne ISCO	1
		Automatic water sampler (variable size, number and material of bottles)	PASS	IRD	opt
	Properties of the particulate phase	Automatic water sampling (24 x 1 liter polypropylene or 350 ml glass)	3700	Teledyne ISCO	1
		Automatic water sampler (variable size, number and material of bottles)	PASS	IRD	opt
Fall velocity	optical absorbance	SCAF ** bottles	IGE	opt	
bedload	Acoustic power	Hydrophone (passive acoustic)	GP0190	Colmar	1
	River bed elevation	Echo sounder (Acoustic time of flight)	echorange	Airmar	1

* LSPIV : Large Scale Particle Image Velocimetry

** SCAF : Suspended aggregates and flocs characterisation system

5

IUSTI is an acronym for Institut Universitaire des Systèmes Thermiques Industriels, IRD is an acronym for Institut de Recherche pour le Développement, IGE is an acronym for Institut des Géosciences de l'Environnement

10

15

20

Table 2: Power balance of instruments integrated in RIPLE platform.

System	Number of measurements per day	Operating consumption [mA.h/day]	Standby consumption [mA.h/day]	Integration in current version of RIPLE [0: no, 1: yes]	Total daily consumption [mA.h/day]	Total daily consumption [W.h/day]
Campbell CR6	x	1560.0	780	1	2340.0	29.5
Module CDMA-108	x	240.0	187.2	1	427.2	5.4
Modem	1	193.7	10	1	203.7	2.6
Water level radar	144	18.0	0	1	18.0	0.2
Water velocity radar	144	132.0	22.8	1	154.8	2.0
LSPIV camera	24	333.3	0	1	333.3	4.2
Control camera	24	333.3	0	1	333.3	4.2
IQ Plus	144	300.0	48	0	0.0	0.0
Conductivity probe	144	12.0	0	1	12.0	0.2
S::CAN	144	840.0	108	0	0.0	0.0
Turbidimeter	144	664.0	0	1	664.0	8.4
Optic fiber turbidimeter	144	540.0	0	1	540.0	6.8
Aquascap	0	100.0	1.9	0	0.0	0.0
Water sampler	0	1600.0	165.2	1	1765.2	22.2
SCAF	4	666.7	0	0	0.0	0.0
Hydrophone	144	400.0	86.4	1	486.4	6.1
Echo sounder	144	480.0	0	1	480.0	6.0
TOTAL		8413.0	1409.5		7758 mA.h/day	97.7 W.h/day

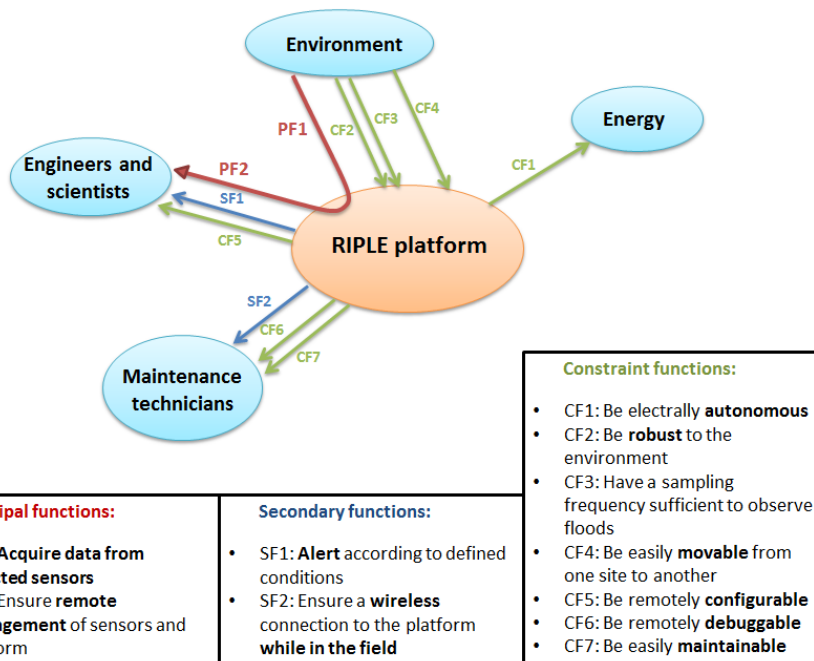
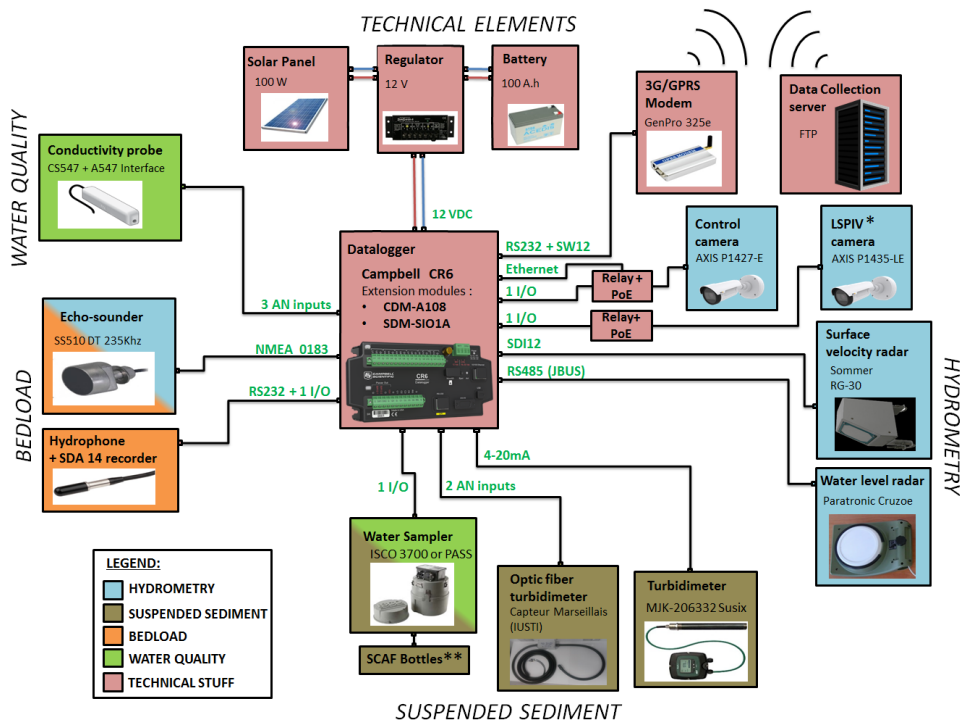


Figure 1: Diagram of the functions to be taken into account for the design of the RIPLE platform.



* LSPIV : Large Scale Particle Image Velocimetry
 ** SCAF : Suspended aggregates and flocs characterisation system

Figure 2: RIPLE platform architecture.

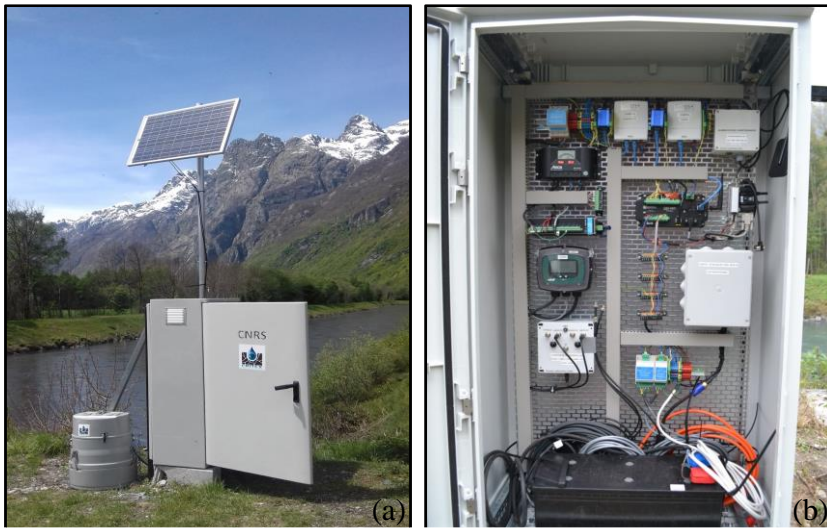


Figure 3 : Photos of the box that houses all the electronics of the platform and the battery: (a) outside view where we also see the solar panel and the ISCO automatic river water sampler, (b) inside view.

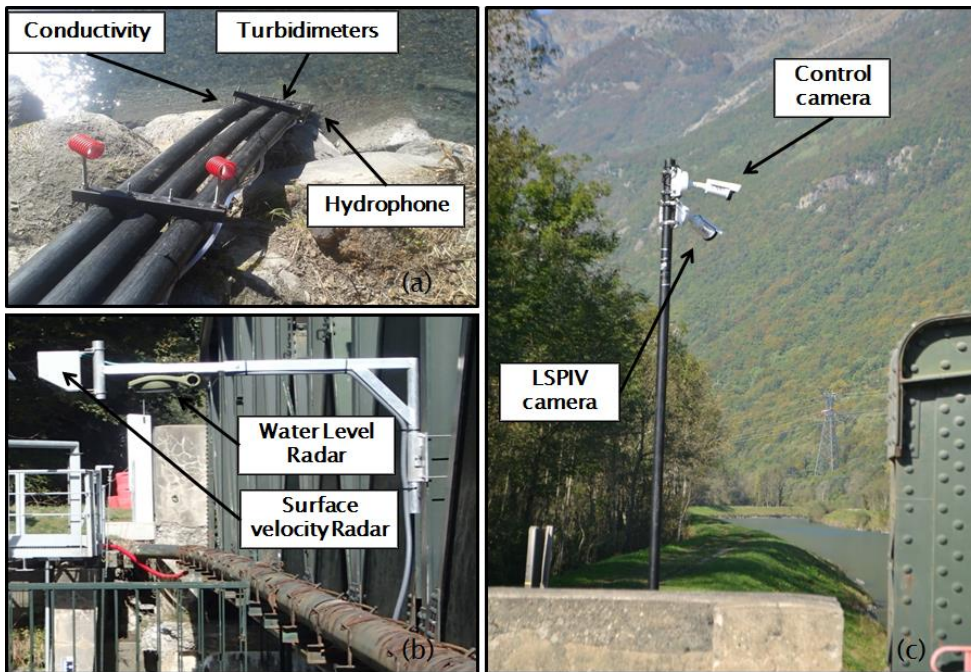


Figure 4: Photos illustrating the deployment of instruments in situ (a) submerged instruments (conductivity probe, turbidimeters and hydrophone) housed in the polypropylene tubes anchored to the river bank, (b) water level and surface velocity radars supported by extensible brackets fixed to the bridge parapet, (c) control digital camera and LSPIV digital camera fixed at the top of a mast located on a river bank.

5

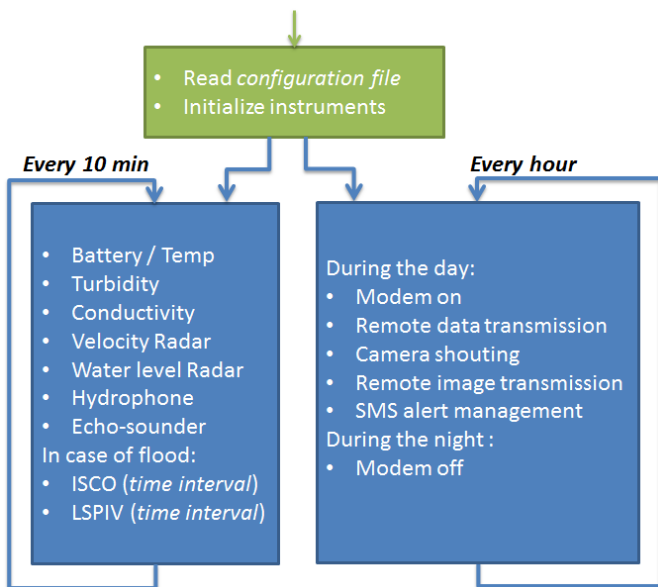


Figure 5: Architecture of the main program that controls the RIPLE platform

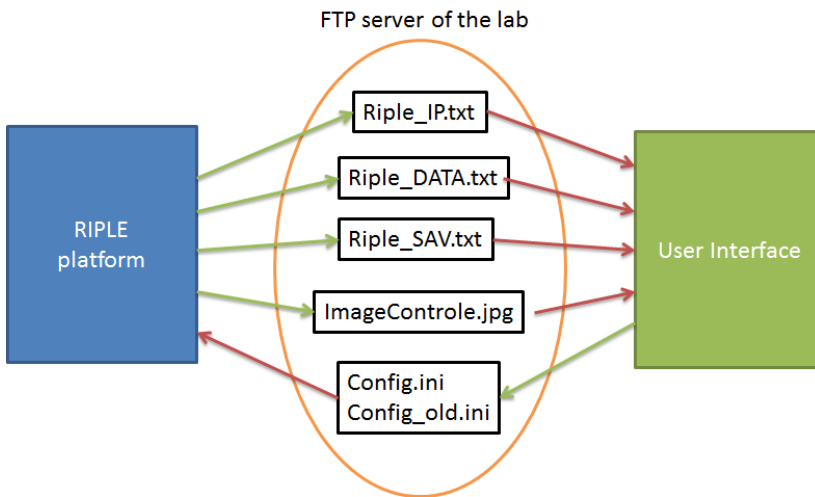


Figure 6: Diagram describing the links between the RIPLE platform, the remote server and the user interface

The “Riple_IP.txt” file contains the current IP address (public and dynamic) of the RIPLE platform.

5 The “Riple_DATA.txt” file contains the data from each instrument of the RIPLE platform.

The “Riple_SAV.txt” file contains the data that enable to remotely control the proper functioning of the RIPLE platform.

“imageControle_Date.jpg” is the image file that data logger puts them on the FTP. A copy of the image is saved locally on the camera in order to make a reliable archiving of the images (in case of malfunction of the remote transmission for example).

“Config.ini” is the configuration file of the platform, which is generated when the user wants to change the configuration of
 10 the platform from a remote location using the RIPLE interface (section 5). A backup of the old configuration is made in the
 “Config_old.ini” file.

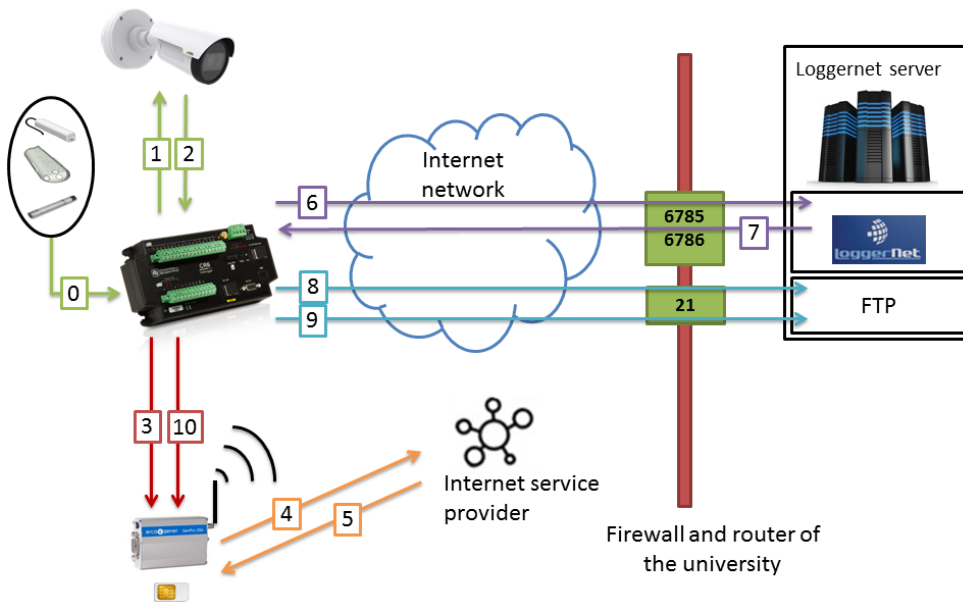
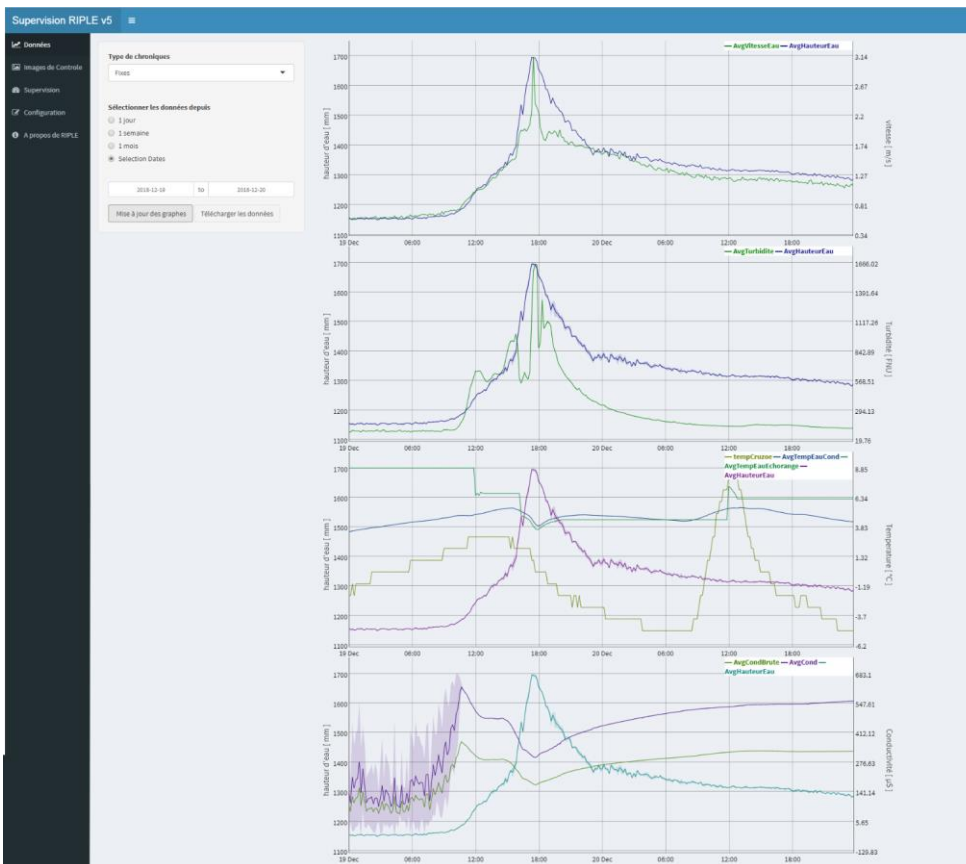


Figure 7: Diagram of the data collection and data transfer to the remote FTP server

0. The data logger continuously retrieves data from the instruments integrated in RIPLE and stores the result in a table.
1. The data logger supplies power to the control camera for a few minutes, which automatically takes an image when it starts up.
2. The camera, configured as an FTP client, places the image on the data logger, which includes an FTP server.
3. The data logger supplies power to the GPRS modem.
4. The modem queries the Internet service provider to obtain a private IP address.
5. The data logger is then connected to the 2.5G, 3G, 4G network.
6. The data logger contacts the Loggernet server via port 6786.
7. The Loggernet software running on the Loggernet server recognizes the data logger with its Packbus number, the connection is established. It is now possible for the manager of the platform to communicate remotely with the data logger.
8. The data logger sends its data tables to the FTP server of the laboratory (FTPClient instruction).
9. The data logger transmits the control image to the FTP server of the laboratory (FTPClient instruction).
10. The data logger switches off the modem after a few hours.
11. A web page created under Shiny (R package) is updated after each new data transmission.



5

Figure 8: Screenshot of the “data visualization menu” of the user interface in the default mode. Four time series graphs are displayed from top to bottom: (1) water level and surface water velocity, (2) water level and turbidity, (3) water level and temperature, (4) water level and conductivity

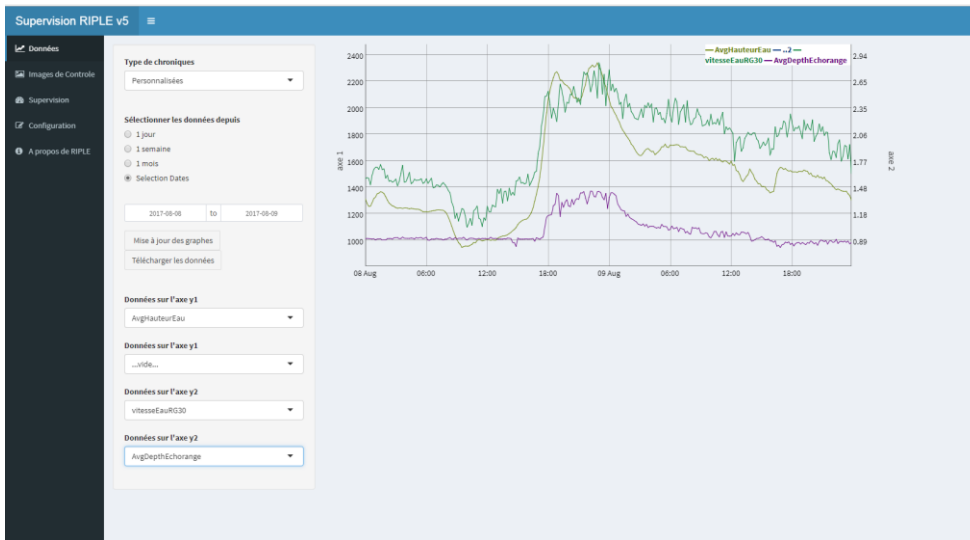


Figure 9: Screenshot of the “data visualization menu” of the user interface in the personalized mode. A graph can be created with two variables on the 1st y-axis, two variables on the 2nd y-axis and in abscissa the time. In this case, the water level, water surface velocity and distance measured by the echo sounder are displayed.

5

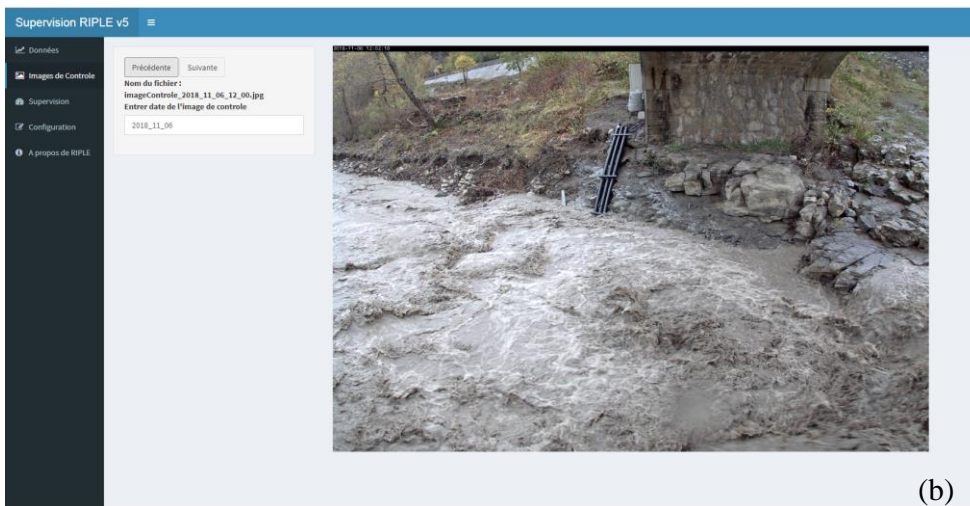
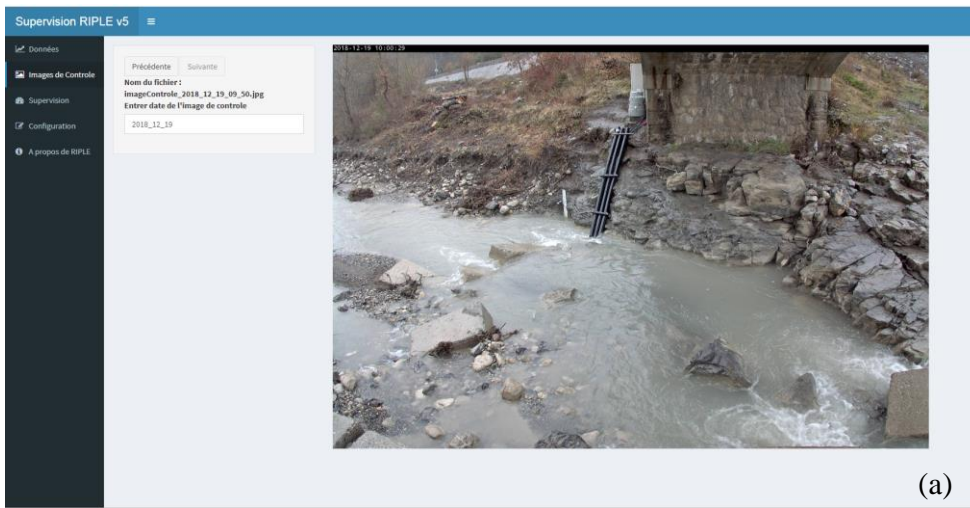


Figure 10: Screenshots of the “images of control menu” of the user interface at two dates: (a) 06/11/2018 12:00 (UTC) for low water conditions, (b) 19/12/2018 10:00 (UTC) during a flood



5 Figure 11: Screenshots of the “supervision menu” of the user interface. A time series graph is displayed with minimum and maximum battery voltage on the 1st y-axis, min and max air temperature on the 2nd y-axis

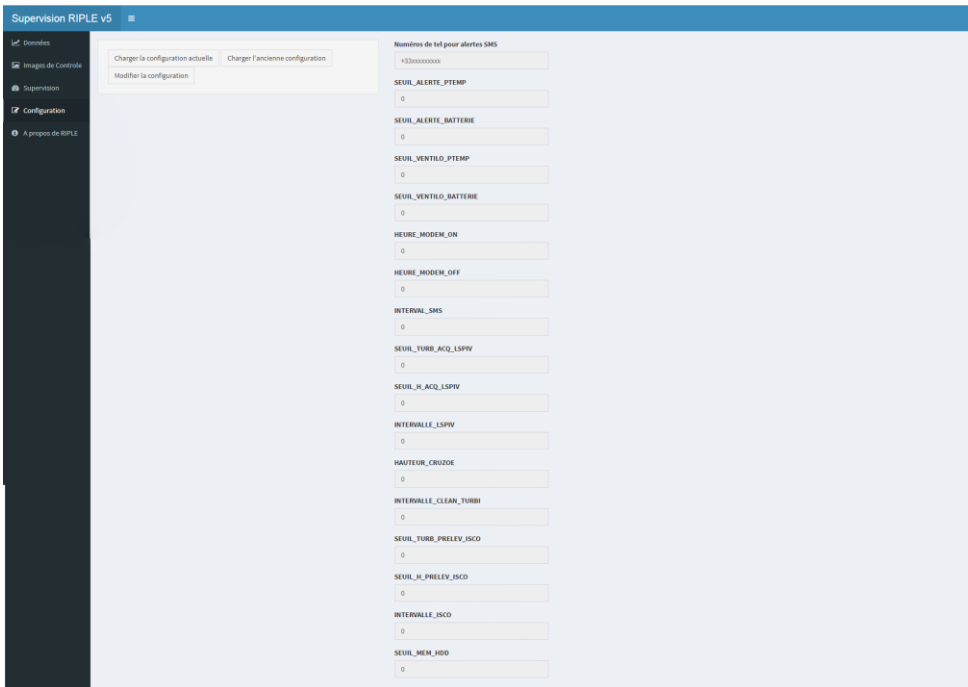


Figure 12: Screenshots of the “configuration menu” of the user interface. All the external variables of the program that can be modified are given below.

“Numéros de tel pour alertes SMS”: List of phone numbers that receive SMS alerts sent by RIPLÉ platform.

5 “SEUIL_ALERT_PTEMP”: Threshold on the temperature of the data logger [in °C] above which an SMS alert is sent.

“SEUIL_ALERT_BATTERIE”: Threshold on the battery voltage [in V] below which an SMS alert is sent.

“SEUIL_VENILO_PTEMP”: Threshold on the temperature of the data logger [in °C] above which the fan is switched on.

“SEUIL_VENILO_BATTERIE”: Minimum battery voltage [in V] to allow the fan to work.

10 “HEURE_MODEM_ON”: UTC time at which the RIPLÉ modem turns on each day, allowing data and images to be transmitted remotely.

“HEURE_MODEM_OFF”: UTC time at which the RIPLÉ modem turns off to limit power consumption.

“INTERVALLE_SMS”: Time interval [in hours] between two SMS alerts.

“SEUIL_TURB_ACQ_LSPV”: Turbidity threshold [in FNU] above which the LSPIV digital camera takes a video.

“SEUIL_H_ACQ_LSPV”: Water level threshold [in mm] above which the LSPIV digital camera takes a video.

“INTERVALLE_LSPIV”: Time interval between 2 consecutive LSPIV video acquisitions [in min]. Must be a multiple of the scan time (10 minutes in this study).

“HAUTEUR_CRUZOE”: difference in elevation between the 0 of the staff gauge and the position of the radar [mm]. The water level is then calculated as the difference between “HAUTEUR_CRUZOE” and the distance measured by the radar.

5 “INTERVALLE_CLEAN_TURBI”: Interval between two consecutive cleanings of the turbidimeter using a small brush [in hours].

“SEUIL_TURB_PRELEV_ISCO”: Turbidity threshold above which the automatic water sampler starts its regular sampling [in FNU].

10 “SEUIL_H_PRELEV_ISCO”: Water level threshold above which the automatic water sampler starts its regular sampling [in mm].

“INTERVALLE_ISCO”: Time interval between two samples [in min]. Must be a multiple of the scan time (10 minutes in this study).

“SEUIL_MEM_HDD”: Threshold of the remaining memory on the hydrophone's HDD below which a collection must be planed [in GB].

15

The button « charger la configuration actuelle » triggers the reading of the "config.ini" file on the FTP by the data logger. This file contains the values of the variables currently loaded by RIPLE paltform.

The button « charger l'ancienne configuration » triggers the reading of the file "config_old.ini" on the FTP by the data logger, in which there is a backup of (n-1) configuration of RIPLE platform (in case of false manipulation).

20 The button « modifier la configuration » [ADMIN]: after entering the password, it allows to edit the value of each variable to change the RIPLE platform configuration.

25

30



Figure 13: Overview (from downstream) of the river section where the RIPL platform is located on a) the Romanche in Bourg d'Oisans (45.1158°N, 6.0134°E, elevation 710 m) and b) the Galabre in La Robine sur Galabre (44.1586°N, 6.2360°E, elevation 680 m).

5

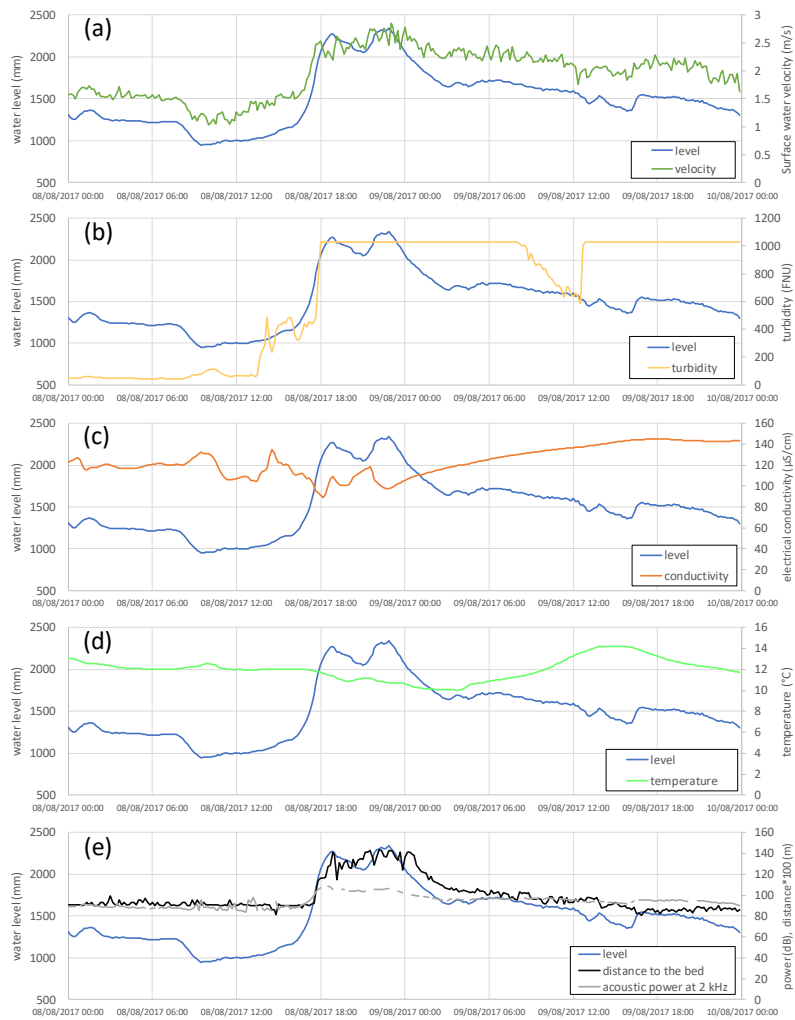


Figure 14: Raw data derived from the "Rinle_DATA.txt" file for the 8 to 9 August 2017 in Bauru d'Oisans (Romanche river). (a) Time series of water level and surface water velocity. (b) Time series of water level and turbidity (susix MJK). Due to an inappropriate parameterization of the sensor, there is saturation of the signal above 1000 FNU. (c) Time series of water level and

Mis en forme : Surlignage

Mis en forme : Légende

electrical conductivity. (d) Time series of water level and temperature. (c) Time series of water level, distance from the echosounder to the river bed and acoustic power at 2 kHz measured by the hydrophone

Mis en forme : Anglais (Royaume-Uni), Surlignage

5

10

15

20

25

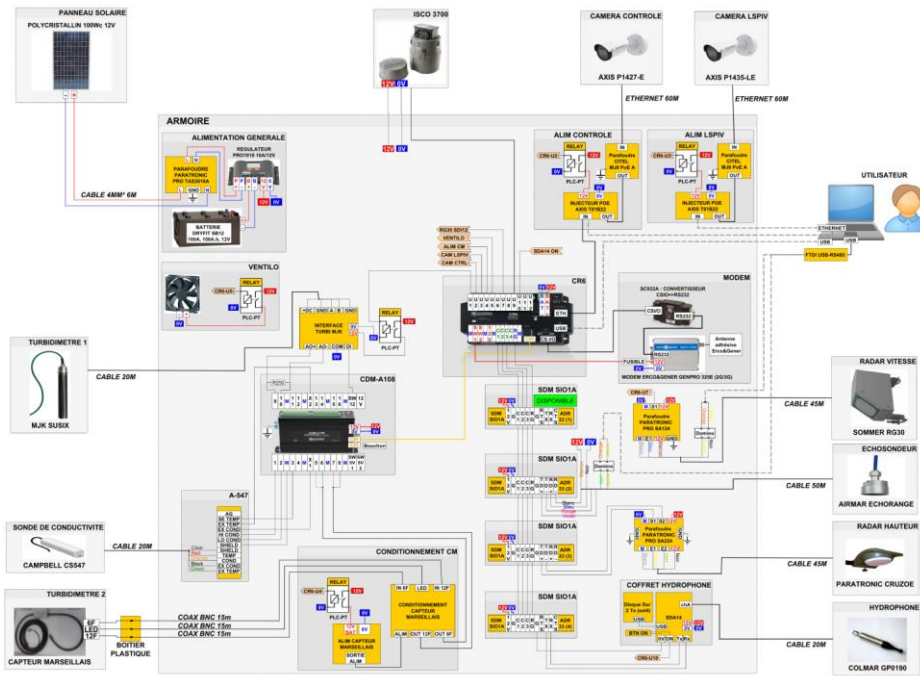
30

Mis en forme : Anglais (États-Unis)

Mis en forme : Normal

Appendix A: the electric diagram of RIPLE platform

Mis en forme : Police :9 pt, Gras



5

10

