

Feasibility of Irrigation Monitoring with Cosmic-ray Neutron Sensors

Cosimo Brogi¹, Heye Reemt Bogena¹, Markus Köhli², Johan Alexander Huisman¹, Harrie-Jan Hendricks Franssen¹, Olga Dombrowski¹

5 ¹Agrosphere Institute (IBG-3), Forschungszentrum Jülich GmbH, 52425 Jülich, Germany

²Physikalisches Institut, Heidelberg University, Heidelberg, Germany

Correspondence to: Cosimo Brogi (c.brogi@fz-juelich.de)

Abstract. Accurate soil moisture (SM) monitoring is key in irrigation as it can greatly improve water use efficiency. Recently, Cosmic-Ray Neutron Sensors (CRNS) have been recognized as a promising tool in SM monitoring due to their large footprint of several hectares. CRNS also have great potential for irrigation applications, but few studies have investigated whether irrigation monitoring with CRNS is feasible, especially for irrigated fields with a size smaller than the CRNS footprint. Therefore, the aim of this work-study is to use Monte Carlo simulations to investigate the feasibility of monitoring irrigation with CRNS. This was achieved by simulating irrigation scenarios with different field dimensions (from 0.5 ha to 8 ha) and SM variations between 0.05 and 0.50 cm³ cm⁻³. Moreover, the energy dependent response functions of eight moderators with different high-density polyethylene (HDPE) thickness or additional gadolinium thermal shielding were investigated. It was found that a considerable part of the neutrons that contribute to the CRNS footprint can originate outside an irrigated field, which is a challenge for irrigation monitoring with CRNS. The use of thin HDPE moderators (e.g., 5 mm) generally resulted in a smaller footprint and thus stronger contributions from the irrigated area. However, a thicker 25 mm HDPE moderator with gadolinium shielding improved SM monitoring in irrigated fields due to a higher sensitivity of neutron counts with changing SM. ~~Such-This~~ moderator and shielding set-up provided the highest chances of detecting irrigation events, especially when the initial SM was relatively low. However, it was found that variations in SM outside a small, irrigated field (i.e., 0.5 and 1 ha) can affect the count rate more than SM variations due to irrigation. This suggests the importance of retrieving SM data from the surrounding of a target field to obtain more meaningful information for supporting irrigation management, especially for small, irrigated fields.

25

1 Introduction

~~Soil moisture (SM) affects a variety of biogeochemical and energy related processes (Seneviratne et al., 2010; Vereecken et al., 2008) and is crucial for understanding hydrological processes in the vadose zone (Brogi et al., 2022).~~ As a reduction in soil moisture (SM) availability can negatively affect crop health, ~~which is why with repercussions on food security,~~ irrigation is often employed to prevent yield reduction and crop failure connected to droughts and heat waves (Kukul and Irmak, 2019; Siebert et al., 2017; Tack et al., 2017; Webber et al., 2016; Zaveri and Lobell, 2019). Worldwide, ~~one ~25 % quarter~~ of the cropped land is irrigated ~~and irrigation accounts for more than 70% of human blue water consumption (Rost et al., 2008).~~ ~~Especially in semiarid and arid regions, irrigation helps~~ to increase food production and stabilize yields, ~~especially in arid and semiarid regions~~ (Kamali et al., 2022; Troy et al., 2015). ~~Unfortunately, irrigation can rapidly deplete local freshwater resources.~~ ~~It is thus~~ predicted that water scarcity will be a key challenge in ensuring food security ~~for the world's growing population, especially~~ in the light of expected climate change (Elliott et al., 2014; Molden, 2013; Pisinaras et al., 2021). To meet this challenge, improvement of water use efficiency in irrigation is crucial (Abioye et al., 2020; Adeyemi et al., 2017). This can be achieved, for example, through an accurate ~~characterization and~~ monitoring of SM in space and time (Vereecken et al., 2008).

~~SA wide range of sensors that~~ monitor ~~spatial and temporal~~ SM variations ~~is available.~~ These are generally either large-scale remote sensing techniques that only sense shallow soil depths ~~(up to 5 cm)~~ and are strongly influenced by vegetation and surface roughness (Bogena et al., 2010; Wagner et al., 2007; Walker et al., 2004), or point-scale instruments that only offer local information (Mohanty et al., 2017). ~~Combining measurements from these two groups is challenging due to the differences in scale and the inherent spatial heterogeneity of SM (Crow et al., 2012; Western and Blöschl, 1999).~~ Recently, ~~hydrogeophysical methods have led to improvements in the monitoring of SM at larger field scales (Binley et al., 2015).~~ In particular, Cosmic-Ray Neutron Sensors (CRNS) have been identified as a promising method to close the gap between point- and large-scale measurements of SM ~~due to their large footprint of tens of hectares (Andreasen et al., 2016; Bogena et al., 2015) (Bogena et al., 2015; Heistermann et al., 2021).~~

CRNS detect neutrons that are produced by natural cosmic ~~ray~~ radiation. ~~The detected neutrons are generally in the thermal (below 0.5 eV) or epithermal (0.5 eV to 0.5 MeV) energy regime.~~ The amount of epithermal neutrons is known to be negatively correlated with the abundance of hydrogen atoms near the soil surface, and thus with the SM nearby the CRNS (Desilets et al., 2010; Köhli et al., 2021; Zreda et al., 2008; Zreda et al., 2012) ~~(Desilets et al., 2010; Zreda et al., 2008; Zreda et al., 2012).~~ CRNS are not only sensitive to SM but also to snow cover (Bogena et al., 2020; Schattan et al., 2017) and, to a generally lesser degree, vegetation (Baatz et al., 2015), atmospheric water vapour (Rosolem et al., 2013), and intercepted water in the canopy and lattice water (Bogena et al., 2013). The accuracy of CRNS- based SM estimates is ~~thus~~ affected by environmental conditions. For example, the count rate is inversely proportional to SM such that dry soils ~~result in have a~~

higher environmental neutron density that allows more accurate measurements compared to wet soils (Bogena et al., 2013; Desilets et al., 2010). Instrument design and set-up can also affect the accuracy of CRNS performance measurements of SM. ~~Thus, r~~Recent sensor developments have focused, for example, on enhancing neutron count rates to obtain a higher temporal resolution for SM estimation. ~~;~~ This can be achieved with larger sensors or by using multiple counter tubes (Chrisman and Zreda, 2013; Schrön et al., 2018b). Additionally, neutrons detected by CRNS are generally in the thermal (below 0.5 eV) or epithermal (0.5 eV to 0.5 MeV) energy regime (Weimar et al., 2020), with the former having smaller footprint and ~~penetration depth as well as different sensitivity to SM and biomass~~ (Jakobi et al., 2021; Jakobi et al., 2022). To enhance the detection of epithermal neutrons, the energy sensitivity (i.e., energy dependent response function) of a CRNS (Köhli et al., 2021) can be shifted towards the epithermal energy range ~~or on refining the sensitivity to thermal or epithermal neutrons (Weimar et al., 2020)~~. Higher count rates can be achieved with larger sensors or by using multiple counter tubes (Chrisman and Zreda, 2013; Schrön et al., 2017). The sensitivity to neutrons of different energy can be modified by using a high-density polyethylene (HDPE) moderators ~~of different size~~ (Desilets et al., 2010; Weimar et al., 2020). In addition, as well as by a gadolinium-based (Ney et al., 2021) or cadmium-based (Andreasen et al., 2016) shielding can be used to prevent the detection of thermal neutrons (Desilets et al., 2010).

A CRNS provides SM information for an area of several tens of hectares and tens of centimetres deep into the soil (Köhli et al., 2015). Compared to point-scale SM monitoring sensors, a CRNS is non-invasive, offers passive and continuous measurements with relatively high temporal resolution, requires low maintenance (Schrön et al., 2018b), and is invariant to certain environmental variables such as soil temperature (Finkenbiner et al., 2019). In the context of agricultural applications, a CRNS ~~additionally can be placed in between or out of the way of routine production practices~~. It consequently does not present the logistic challenges associated with networks of directly inserted sensors, which need to be removed and reinstalled during harvest, planting, and other management actions (Franz et al., 2016). CRNS applications have increased rapidly in recent years, ~~including, even though the principles behind the measurement approach have been known for decades (Kodama et al., 1985)~~. ~~CRNS have been used for the~~ validation of satellite-based remote sensing products (Montzka et al., 2017) ~~and, the~~ improvement of hydrological and land-surface model predictions (Baatz et al., 2017; Shuttleworth et al., 2013) ~~(Shuttleworth et al., 2013) and land surface model prediction (Baatz et al., 2017), and the~~ ~~monitoring of snowpack dynamics~~ (Bogena et al., 2020; Schattan et al., 2017); among many other applications. In the upcoming years, additional coverage, real-time data availability, and rover-based measurements are expected to further increase the use of CRNS (Dong et al., 2014; Jakobi et al., 2020), for example to study prolonged droughts or flood events (Bogena et al., 2022).

Cosmic-ray neutron sensing has shown potential for monitoring and informing irrigation (Franz et al., 2020). However, the most accurate results are obtained in environments where SM within the footprint is rather homogeneous (Schrön et al., 2017). Although Franz et al. (2013) indicated a rather small effect of horizontal SM heterogeneity on CRNS measurements

under natural conditions, individual ~~areas with contrasting SM can be wrongly represented by a single~~ ~~contributions from~~ ~~areas with different SM content can be overlooked by a single~~ CRNS (Badiee et al., 2021; Schattan et al., 2019; Schrön et al., 2022; Schrön et al., 2018a). Sub-footprint heterogeneity can be reconstructed using multiple instruments, but this comes with increased costs and necessitates further assumptions regarding spatial continuity (Heistermann et al., 2021). As a result, it can be difficult to distinguish local SM variations (Francke et al., 2022), such as the difference between the SM in a small, irrigated field and ~~in~~ its surroundings. ~~Furthermore, if the irrigated area is only a small portion of the area sensed by the CRNS, the detection of irrigation-related SM variations might not be possible (Li et al., 2019).~~ Despite such limitations, Ragab et al. (2017) reported that CRNS measurements were useful for monitoring soil moisture deficit in the root-zone and Finkenbiner et al. (2019) found that information obtained from combined CRNS measurements and electrical conductivity surveys could improve water use efficiency in a field irrigated with a centre pivot system in Nebraska (USA). ~~Also~~ In addition, Baroni et al. (2018) reported a clear response of CRNS to irrigation, although quantification of single irrigation events was not possible due to effects of precipitation and irrigation of nearby fields. In the case of drip irrigation, where the irrigated area is only a small portion of the volume sensed by the CRNS, the detection of irrigation-related SM variations can be more challenging. In Li et al. (2019), ~~found that~~ it was not possible to accurately monitor drip irrigation with a standard CRNS in a citrus orchard in Spain. This was a consequence of the relatively small area wetted by drip irrigation, which resulted in a small mean SM change in the instrument footprint. However, ~~it was suggested that~~ better results could be achieved in irrigated fields with a larger wetted area, in drier regions, and for longer and more intense irrigation periods as well as by using instruments with higher count rates. These previous studies highlight that it is currently not clear if CRNS can be used as an accurate stand-alone tool in irrigation management. In particular, the effects of the dimension of the irrigated area, SM variation due to irrigation, and the design of the sensor are largely unaddressed.

Within this context, the aim of this study is to analyse the feasibility of CRNS-based SM monitoring in irrigated environments. To achieve this, neutron transport and detection in irrigated environments was investigated with physics-based Monte Carlo simulations. ~~These, which~~ are widely used in CRNS studies (Andreasen et al., 2016) (~~Andreasen et al., 2016; Köhli et al., 2015~~) that are focused on, ~~for example, Monte Carlo simulations have been used to the~~ description ~~of the~~ footprint characteristics (Zreda et al., 2008) (~~Köhli et al., 2015; Zreda et al., 2008~~) and to improve local site arrangement and instrument calibration strategies (Desilets and Zreda, 2013; Schrön et al., 2017). In this study, the Ultra Rapid Adaptable Neutron-Only Simulation (URANOS) model developed by Köhli et al. (2015) was used. Simulations were performed for five different dimensions of irrigated areas (i.e., 0.5, 1, 2, 4, and 8 ha) and SM variations between $0.05 \text{ cm}^3 \text{ cm}^{-3}$ and $0.50 \text{ cm}^3 \text{ cm}^{-3}$ both within and outside the irrigated area. To ~~also~~ evaluate how detector design can help to improve irrigation monitoring, the energy dependent response functions of eight different moderators were also considered. The analysis of this set of Monte Carlo simulations will allow us to investigate the effect of different moderators, dimensions of the irrigated area, and SM variations inside and outside the irrigated area on CRNS-based irrigation monitoring.

2 Materials and methods

2.1 Soil moisture monitoring with CRNS

CRNS measure SM by detecting the environmental neutron density produced by cosmic radiation, which is inversely related with below- and aboveground hydrogen pools that surround the sensor. These environmental neutrons have different energies depending on the amount and type of interactions that have occurred. Primary cosmic rays with energies around 1 GeV generate high-energy (larger than 20 MeV) neutrons in the atmosphere. By interacting with heavy atoms, these neutrons lose energy and become fast neutrons (0.5 to 20 MeV). The energy of these fast neutrons is further reduced by elastic collisions with lighter atoms (generally hydrogen), first to the epithermal regime (0.5 eV to 0.5 MeV), and finally to a thermal equilibrium (below 0.5 eV). CRNS typically measure neutrons in the thermal to fast energy regimes (Köhli et al., 2021; Weimar et al., 2020). The measured neutron flux is affected by multiple hydrogen pools, such as soil water, water bodies, lattice water, and biomass. Typically, the CRNS signal is mainly controlled by SM variations, but the additional hydrogen pools can strongly influence the accuracy of the SM estimates (Baatz et al., 2015; Baroni et al., 2018; Iwema et al., 2021; Jakobi et al., 2020; Zreda et al., 2012). ~~(Baatz et al., 2015; Bogaen et al., 2022; Jakobi et al., 2020; Zreda et al., 2012).~~

Generally, a CRNS is composed of one or more neutron detectors. ~~These are gas-filled metal tubes that can be bare (thermal-epithermal neutron detection) or moderated with HDPE (epithermal to fast neutron detection). When a neutron from a certain energy range collides with the detector gas, this results in a charge pulse that is registered by the pulse detection module. A data logger periodically retrieves and stores neutron counts and pulse diagnostics from the pulse detection module. Additionally, a meteorological station can be added for data correction and a modem can be installed to deliver data in near-real time.~~ More detailed information on the main detector components and physics can be found in Zreda et al. (2012), Schrön et al. (2018b), and Weimar et al. (2020).

2.2 CRNS footprint and penetration depth

The quantitative description of the horizontal area over which a CRNS measures is named footprint. Detected neutrons that had no contact with the ground (non-albedo neutrons) are, by definition, excluded from the footprint calculation. Thus, the footprint only depends on detected neutrons that had contact with the ground (albedo neutrons). ~~Since CRNS cannot detect~~ ~~As~~ the origin of a neutron and whether it had contact with soil ~~nuclei cannot be recorded by a CRNS~~, the footprint is generally obtained via neutron transport simulations. ~~Although some studies suggested an asymmetric or “amoeba-like” footprint (Schattan et al., 2019; Schrön et al., 2022), most studies assume a simplified circular~~ ~~that is assumed to be circular and~~ depends on the Euclidean distance between the points where neutrons had first contact with the ground and the point of detection. A quantile definition is widely used to define a distance within which most detected neutrons originate (Desilets and Zreda, 2013; Zreda et al., 2008). Commonly used radii are the one *e*-folding length (~63% of neutrons) and the two *e*-folding length (~86% of neutrons). The footprint varies depending on environmental conditions and instrument

characteristics (Schrön et al., 2017). Monte Carlo simulations showed that the two e -folding footprint (R86) is ~240 m in fully dry conditions and is reduced by up to 40% with increasing SM and, to a lesser degree, with variations in humidity, vegetation, and other environmental variables (Köhli et al., 2015). The penetration depth of a CRNS also depends on SM and is higher below the instrument where it ranges between 83 and ~15 cm (Köhli et al., 2015) depending on SM. The characterization of the CRNS support volume in terms of footprint and measurement depth is a complex and ongoing research subject (Schrön et al., 2022), as shown by a range of recent simulation and field studies that further investigated the spatial sensitivity of SM determined with CRNS (Badiée et al., 2021; Francke et al., 2022; Schrön et al., 2017) as well as the footprint of thermal neutrons (Jakobi et al., 2021).

2.3 Neutron transport modelling with URANOS

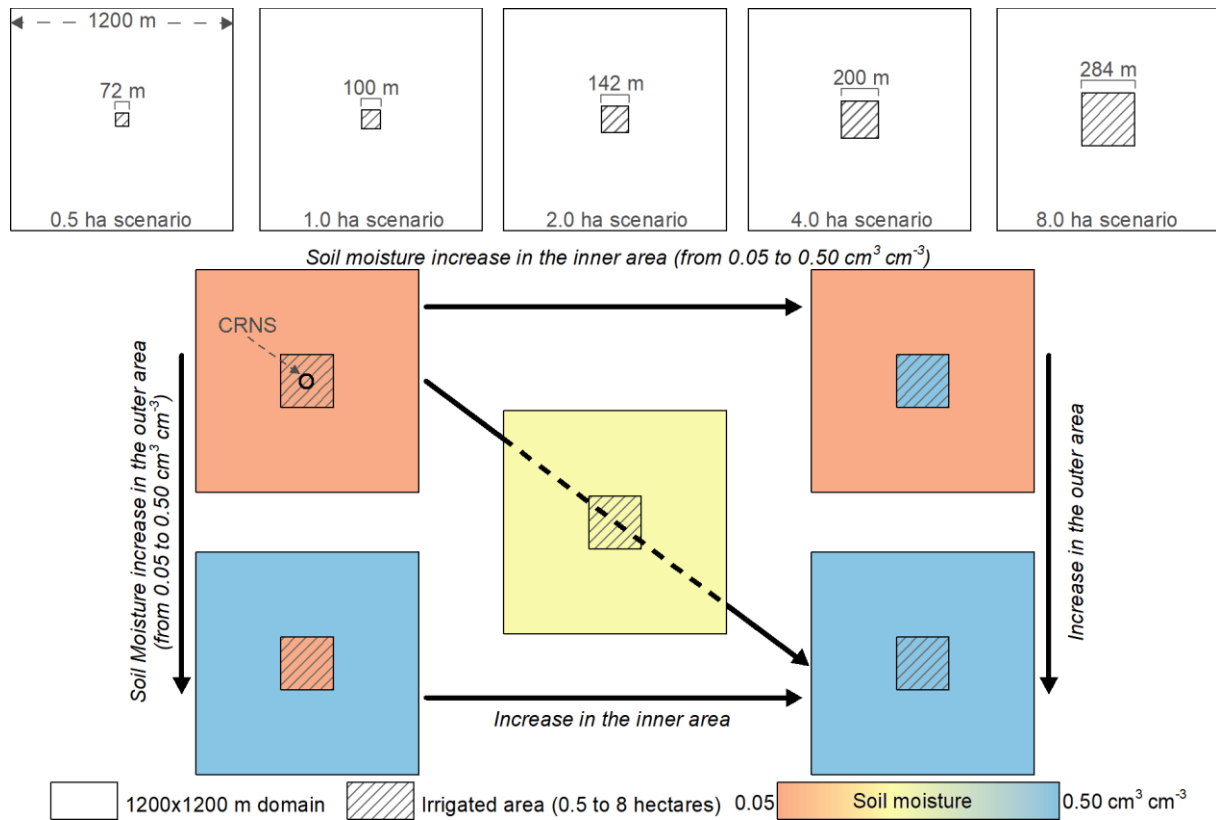
The URANOS model, which is freely available online (<http://www.ufz.de/uranos>), was used in this study. This model was first developed to address neutron-only interactions and was later adapted to the cosmic-ray neutron problem (Köhli et al., 2015). URANOS is based on a Monte Carlo approach for the simulation of neutron transport and interactions with matter (Köhli et al., 2018). It is tailored to the study of neutron transport in environmental science and thus certain processes such as gamma cascades or fission are neglected or represented by effective models. This reduces the computational effort and generally allows the simulation of a larger number of neutrons, which results in more accurate simulations (Köhli et al., 2015). In URANOS, neutrons are emitted from point sources that are randomly distributed within a user-defined source layer with energies sampled from a realistic spectrum matching that of the earth's atmosphere (Sato, 2015). Then, URANOS uses a standard calculation routine that features a ray-casting algorithm for single neutron propagation and tracks the relevant physical interactions for millions of neutrons (e.g., elastic collisions, inelastic collisions, absorption, and emission processes such as evaporation). URANOS follows the ENDF (Evaluated Nuclear Data File) database standard implementations from Romano and Forget (2013) with cross-sections, energy distributions, and angular distributions obtained from the datasets of Chadwick et al. (2011) and Shibata et al. (2011).

180 2.4 Simulation setup

The model domain in URANOS was composed of six layers: one soil and five atmospheric layers. The soil layer extended to 1.6 m depth. The atmospheric layers extended from the soil surface to 1000 m height. The thickness of the five layers was 2, 0.5, 47.5, 30, and 920 m from the bottom to the top layer. The fourth layer was the source layer (from 50 to 80 m above the soil surface, respectively). The pressure of the atmosphere and of the air in the porous media were set to 1020 hPa. A humidity of 3 g cm⁻³ and a composition of 78% nitrogen, 21% oxygen, and 1% argon were assumed. The soil bulk density was set to 1.43 g cm⁻³ and the porosity was set to 50%.

The simulation domain was 1200x1200 m (144 ha) with a resolution of 1 m. It was divided in two areas: a) a square area at the centre of the domain with five different dimensions (i.e., 0.5, 1, 2, 4, and 8 ha) and b) the surrounding area. The SM in

190 the inner and in the outer areas was modified independently with increments of $0.05 \text{ cm}^3 \text{ cm}^{-3}$. The SM variations were applied homogeneously (both vertically and horizontally) within each area. **Figure 1** conceptually describes the simulation strategy taking the 8 ha scenario as an example. A first simulation is performed with a uniform SM of $0.05 \text{ cm}^3 \text{ cm}^{-3}$ in both inner and outer areas. Then, the SM is varied either in the inner area, the outer area, or in both areas. This results in 100 simulations with different SM combinations for each scenario, and a total of 500 simulations. For each simulation, 10^8 neutrons were used as this provided sufficient precision and a reasonable computation time (Köhli et al., 2015).



200 **Figure 1: Examples of the dimensions of the inner area relative to the simulation domain and schematization of the simulation design and setup with an example for the 8 ha scenario. A 1200x1200 m domain is used with an inner area of 8 hectares and a CRNS placed at its center. The SM is then systematically varied in the inner and outer area with increments of $0.05 \text{ cm}^3 \text{ cm}^{-3}$ for a total of 100 simulations.**

2.5 Investigated moderators and their energy-dependent response functionsefficiencies

Each simulation provided information on the simulated neutrons that crossed the detector at the centre of the domain (e.g., energy at detection, coordinates of first soil contact). The detector was a vertical cylinder of 9 m radius positioned in the second atmospheric layer (2 to 2.5 m aboveground) and at the centre of the simulation domain. However, not all neutrons that pass through the detector tube are detected, whereby the probability of detection depends on neutron energy and

direction, as well as on sensor characteristics such as the used conversion gas, geometrical configuration, and moderator type (Köhli et al., 2018). Different moderators are commercially available and are typically made of HDPE of various thicknesses. In this study, we investigated the use of 5, 10, 15, 20, 25, 30, and 35 mm HDPE moderators. Furthermore, ~~a moderator composed of 25 mm HDPE and~~ an additional gadolinium oxide (Gd_2O_3) shield was investigated for a moderator composed of 25 mm HDPE. For the gadolinium variant, a 25 mm HDPE moderator thickness was selected as it was proposed by Desilets et al. (2010). In addition, Weimar et al. (2020) found only small differences in response for moderator thicknesses of 20 to 27.5 mm HDPE with gadolinium shielding. Thus, the combination of gadolinium shielding with other moderator thicknesses was not considered. The energy dependent response functions of the investigated moderators as reported by Köhli et al. (2018) are shown in ~~Figure 2~~Figure-2. Detectors with thin HDPE moderators (e.g., 5 mm HDPE) are highly sensitive to thermal neutrons while detectors with thicker moderators have a higher sensitivity to epithermal neutrons. The 25 mm HDPE moderator with gadolinium shielding has similar sensitivity to epithermal neutrons ~~compared-ast~~ the non-shielded variant but shows less sensitivity to thermal neutrons (Köhli et al., 2018; Weimar et al., 2020). In fact, such shielding can absorb and thus prevent the detection of more than 90% of the incoming thermal neutrons (Ney et al., 2021), which have a smaller footprint and different sensitivity to SM than epithermal neutrons (Jakobi et al., 2021; Jakobi et al., 2022; Rasche et al., 2021). A cubic spline of each response function was applied to the output of each simulation and a weight was assigned to each neutron depending on its energy at detection. Then, these weights were ~~either~~ summed to obtain the number of detected neutrons and subsequently~~or~~ used in a weighted calculation of the R86. The effect of the angular distribution of the neutrons was not considered here as it was assumed to be negligible, which is reasonable given the~~due to~~ ~~the~~ absence of changes (e.g., vegetation, atmospheric pressure, humidity) in the vicinity of the detector ~~between simulations~~.

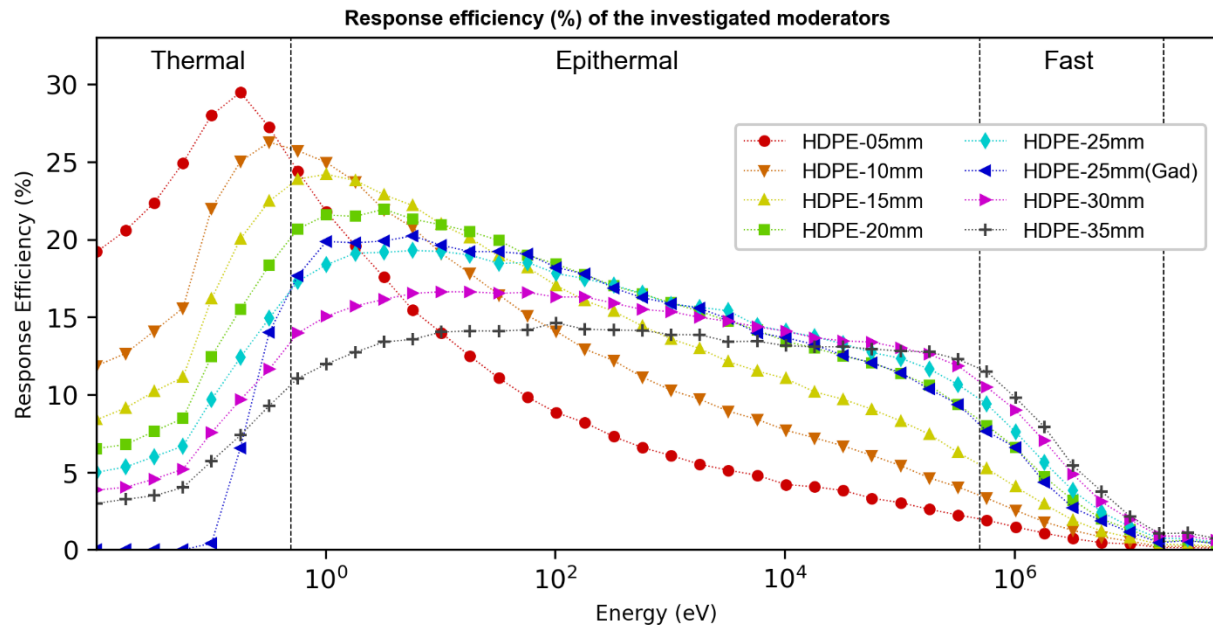


Figure 2: Energy dependent response functions of different moderators made of 5 to 35 mm thick high-density polyethylene (HDPE) and, in the case of 25mm HDPE, an additional gadolinium based thermal shielding.

230 2.6 Investigation of the feasibility of irrigation monitoring with CRNS

235 ~~The detected neutrons in each simulation were divided in two types: albedo and non-albedo neutrons. Albedo neutrons carry environmental SM information and were further divided in neutrons that originated within the inner area and neutrons that originated in the outer area. Here, it was assumed that the neutrons that originate within the inner irrigated field carry the bulk of the information of interest. Next, the changes of R86 due to SM variations in the inner and outer areas as well as the use of different moderators were analysed. Although it has been shown that a footprint description that relies on a single value can be misleading (Badiee et al., 2021) (Badiee et al., 2021; Schrön et al., 2022), the R86 represents a standard in CRNS applications and was thus selected to investigate the simulations of this study. Here, the initial hypothesis it is assumed that having a relatively small R86 is beneficial when monitoring irrigation in small fields as a lower contribution from the surrounding area could be expected. To analyse the Monte Carlo simulation runs, the detected neutrons in each~~

240 ~~simulation were divided in two types: albedo and non-albedo neutrons. Albedo neutrons carry environmental SM information and were further divided in neutrons that originated within the inner area and neutrons that originated in the outer area. Here, it was assumed that the neutrons that originate within the inner irrigated field carry the bulk of the information of interest. Although neutrons that originate outside the irrigated field can have occasional within-field interactions before reaching the CRNS (Köhli et al., 2015), these were considered of secondary importance for the scope of~~

245 ~~this study.~~ In a following step, the relative changes in detected neutrons with SM variations were investigated. For a given dimension of the inner area, moderator type, and SM of the outer area (10 simulations), the highest simulated neutron count was set to 100%. Then, the results of the other nine simulations were scaled to that count rate. The influence of the

moderator type, the dimension of the irrigated area, and the SM in the outer area were then compared. Here, larger changes of detected neutrons were considered beneficial as this leads to higher accuracy of the SM estimates.

250

Next, the sensitivity to irrigation events was assessed in more detail for the moderator type that provided the largest relative changes in detected neutrons. Starting from homogeneous SM conditions in the simulated domain, an irrigation event was assumed to increase the SM in the irrigated area either by 0.05 or by 0.10 cm³cm⁻³. The initial homogeneous SM conditions were between 0.05 and 0.25 cm³cm⁻³ as this is the relevant range for irrigation applications. The selected detection thresholds, shown in [Table 1](#), were based on the relative error of the simulations:

255

$$\sigma = 100 * \sqrt{1/N_1 + 1/N_2} \tag{1}$$

where N_1 and N_2 are the neutron counts obtained with the initial and ~~with the~~ final SM conditions, respectively. In addition to σ , a value of $\alpha = 1\%$ was included in each threshold to represent a generic detection uncertainty limit for a detector that can achieve ~1000 counts per hour and aggregation times of < 12 hours that are relevant in [irrigation-SM](#) monitoring (Schrön et al., 2022).

260

Table 1: Detection thresholds that were adopted to investigate the CRNS sensitivity to irrigation events.

Threshold value	Sensitivity
Below $\sigma + \alpha$	Uncertain results
$\sigma + \alpha$ to $2\sigma + \alpha$	Good detection chance
$2\sigma + \alpha$ to $3\sigma + \alpha$	High detection chance
Above $3\sigma + \alpha$	Detectable

265

Lastly, relative changes in detected neutrons due to homogeneous SM variations within the simulation domain were compared with those due to SM variations that occur in the inner or in the outer areas only. Again, the moderator type that had provided the largest relative changes in detected neutrons was selected. For each dimension of the irrigated area (100 simulations), the highest simulated neutron count was set to 100%. The reduced sensitivity of the detection-SM relationship in the case of SM variations that occur only in the inner area was assessed. Here, a lower reduction in sensitivity was considered beneficial for irrigation monitoring. Also, the influence of the SM in the outer area on the count rate was compared to that of SM variations in the inner area. A strong influence of the SM in the outer area was considered disadvantageous for irrigation monitoring.

270

3.1 Detected albedo neutrons and their origin

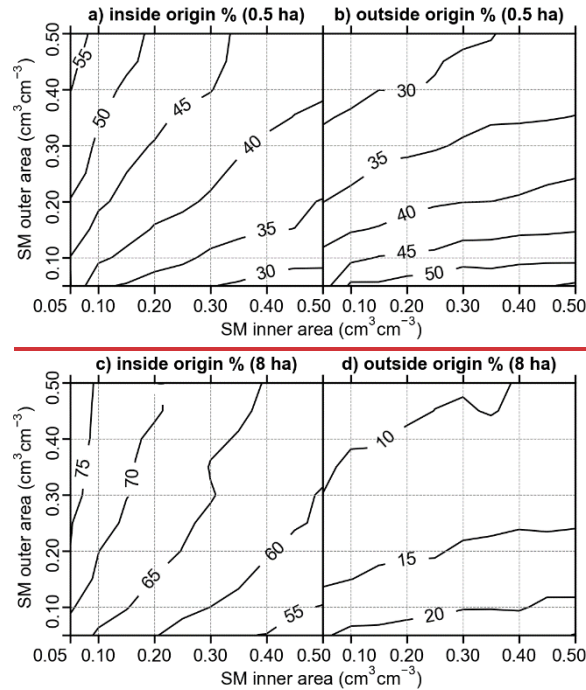
For each dimension of the simulated inner area and for each moderator type, Table 2 shows the minimum and maximum percentages of detected neutrons that originate in the inner area depending on SM conditions. This percentage represents the detected neutrons that originate within an irrigated field and thus carry the information of interest in case of irrigation applications. Considerable differences are found between simulations depending on the SM in the inner and outer area. The dimension of the irrigated area obviously also influences the results. In particular, 27.7 % to 61.1 % of the detected neutrons originate from within a 0.5 ha irrigated field whereas larger fields show higher percentages (e.g., 51% to 85% from within an 8 ha field). Also, thinner moderators generally show a higher percentage of detected neutrons from the inner area.

Table 2: Minimum and maximum percentage of detected albedo neutrons originating within the inner area depending on SM conditions with different moderators and different scenarios. The colour in each cell indicates the mean percentage with low values in white and high values in grey.

Moderator	Scenario (inner area dimension)				
	0.5 ha	1 ha	2 ha	4 ha	8 ha
5 mm	34.5–61.1	41.0–67.9	48.1–75.1	57.7–81.4	66.4–85.3
10 mm	32.0–59.9	38.3–66.1	44.7–72.8	53.9–78.9	62.3–83.0
15 mm	30.5–59.0	36.5–64.9	42.4–71.2	51.1–77.0	59.2–81.2
20 mm	29.4–58.1	34.9–63.6	40.4–69.4	48.5–75.0	56.1–79.2
25 mm	28.8–57.6	34.1–62.9	39.3–68.5	47.0–73.9	54.4–78.0
25 mm Gad	27.3–57.3	32.6–62.5	37.5–68.1	45.1–73.5	52.4–77.9
30 mm	28.2–57.0	33.3–61.9	38.2–67.3	45.5–72.6	52.4–76.6
35 mm	27.7–56.4	32.5–61.1	37.2–66.3	44.1–71.3	50.7–75.3

Figure 3 shows the variation of the percentage of detected neutrons that originate in the inner (Figure 3a) or in the outer area (Figure 3b) for the 0.5 ha scenario as a function of the SM of both areas for a detector with a 25 mm HDPE moderator with gadolinium shielding. For a more detailed description of the detected non albedo neutrons, please refer to Appendix A. Clearly, the fraction of neutrons originating in the inner and outer area strongly depends on SM. The percentage of neutrons originating in the inner area is smallest when the inner area is wet and the outer area is dry (27.3%). This percentage increases up to 45.3% if the SM in the inner area is reduced to $0.05 \text{ cm}^3 \cdot \text{cm}^{-3}$ and then to 57.3% when the SM of the outer area increases to $0.50 \text{ cm}^3 \cdot \text{cm}^{-3}$. The percentage of neutrons originating in the outer area (Figure 3b) shows the opposite trend. From these results, it is clear why CRNS applications focused on irrigation of small fields can face considerable challenges. Especially in small irrigated fields, the number of detected neutrons that originate outside the irrigated area can be higher than the number of neutrons that originate inside of the irrigated area. This is especially true when the SM outside the irrigated area is relatively low, which is often the case when the inner area is irrigated. Figure 3 also presents the same

300 analysis for an 8 ha field and a detector with 25 mm HDPE moderator with gadolinium shielding. The percentage of
 neutrons originating from the inner (Figure 3c) and outer (Figure 3d) area varies with a similar pattern as in the 0.5 ha case.
 However, the percentage of neutrons from the inner area is higher in the 0.8 ha scenario and shows a lower overall variation.
 Again, the lowest percentage of detected neutrons originating from the inner area (52.4%) is found when the inner area is
 wet and the outer area is dry, whereas the highest value (77.9%) is found with reversed SM conditions. A comparison of the
 305 0.5 ha scenario (Figure 3a-b) and the 8 ha scenario (Figure 3c-d) shows a clear difference in the sensitivity to SM variations.
 The 8 ha scenario shows higher sensitivity to SM variations in the inner area and less sensitivity to SM variations in the outer
 area compared to the 0.5 ha scenario.

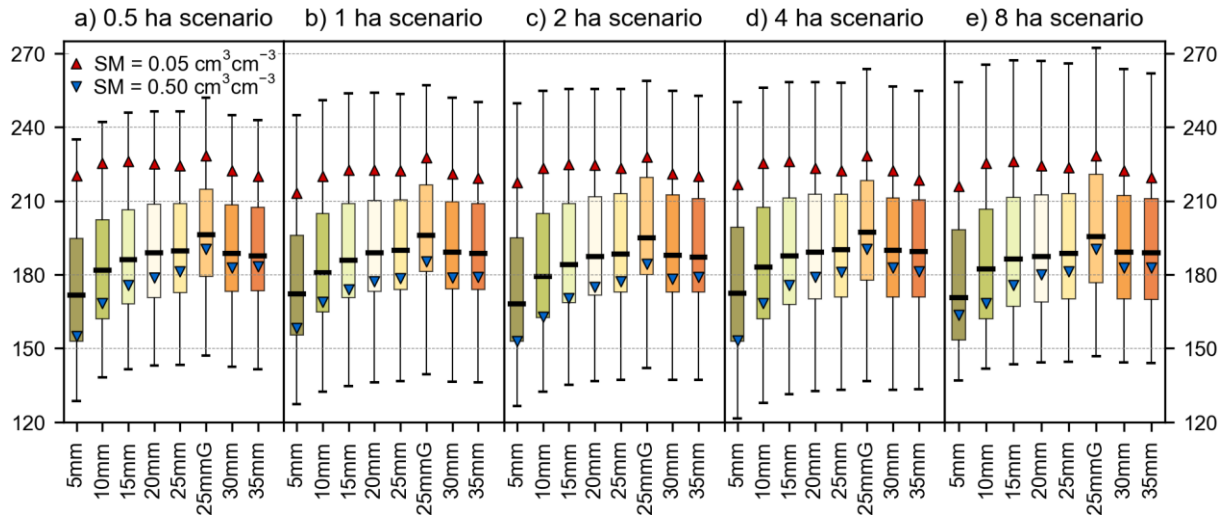


310 **Figure 3: Percentages of detected neutrons that originate in the a) inner and b) outer area for the 0.5 ha scenario or in the d) inner and c) outer area for the 8 ha scenario. These results are shown for a detector with a 25mm HDPE moderator with gadolinium shielding.**

3.12 CRNS footprint variations with SM heterogeneity and moderator type

The analysis of the CRNS footprint ~~canis be useful tofor~~ understanding the area-general distance from which the measured
 315 neutrons originate. The boxplots of R86 for all moderators and for different dimensions of the irrigated field are shown in
Figure 3Figure-4. In general, the footprint increases when a thicker HDPE moderator is used and increases further when
 gadolinium shielding is added. Additionally, there is a trend towards a larger variability of the footprint size with SM
 variations when larger inner-irrigated areasareas are considered. Generally, the largest R86 values are obtained using a 25
 mm HDPE moderator with gadolinium shielding (e.g., min =147, med =196, and max =273 m in the 8 ha scenario), whereas

320 the lowest values are obtained with a 5 mm HDPE moderator (e.g., min =127, med =162, and max =238 m in the 0.5 ha scenario). Nonetheless, for each dimension of the irrigated area, the difference in R86 obtained with different moderators and shielding is rather small and in the order of 10 to 20 m only. Such differences in R86 may thus have limited influence on CRNS measurements of small, irrigated fields.



325

Figure 34: Boxplots of R86 in meters for different moderator types and size of the inner area, i.e. a) 0.5 ha, b) 1 ha, c) 2 ha, d) 4 ha, and e) 8 ha. Each boxplot refers to one moderator type (100 combinations of SM) and shows the minimum and maximum values with whisker caps, the interquartile range with bars, and the median with a black line. Blue and red triangles show R86 values for homogeneous SM of 0.05 and 0.50 cm³ cm⁻³ respectively.

330 A more in-depth analysis of how R86 changes with SM variation is shown in Figure 4Figure-5 for a 5 mm HDPE moderator and for a 25 mm HDPE moderator with gadolinium shielding. The value of R86 depends on both the SM of the inner and outer area. Similar patterns in R86 variation with SM are found when other moderators are used (not shown). For example, for a 5 mm HDPE moderator, ~~t~~The highest R86 value in the 0.5 ha scenario is ~234250 m for high SM in the inner and low SM in the outer area (bottom right in Figure 4Figure-5a). The R86 decreases to ~220229 m when the SM in the inner area is reduced to 0.05 cm³ cm⁻³. A more pronounced decrease of R86 to ~132147 m occurs when the SM in the outer area is increased up to 0.50 cm³ cm⁻³. When the size of the inner area increases (Figure 4Figure-5b-e), the general trends in R86 with SM remain rather constant except for simulations where SM is high in the inner area and low in the outer area (bottom right corners). For these conditions, R86 tends to increase with increasing size of the inner area. For example, R86 is ~258274 m in the 8 ha scenario (Figure 4Figure-5eb), which is more-almost 15 than 20 m larger than the R86 in the 0.5 ha scenario (~234250 m) for a SM of 0.50 cm³ cm⁻³ in the inner area and 0.05 cm³ cm⁻³ in the outer area. Similar considerations can be drawn for a 25 mm HDPE moderator with gadolinium shielding (Figure 4d-f).

335

340

In previous studies, the smallest R86 was often assumed to occur for the highest SM in the CRNS surroundings. This is true for homogeneous SM conditions, but may be different for heterogeneous SM distributions (Schrön et al., 2022). When the SM of the inner area is low and that of the outer area is high, the outer area becomes a less important source of neutrons and thus the footprint is reduced. An opposite effect occurs when the inner SM is high, and the outer SM is low. In this case, the inner area is a smaller source, and the neutrons from the outer area become more important, resulting in a larger footprint. For example, with a 5 mm HDPE moderator (Figure 4a) the R86 of a 0.54 ha field reduces by 39.938.7 % when SM increases from 0.05 to 0.50 $\text{cm}^3 \text{cm}^{-3}$ in the outer area whereas the same SM increase in the inner area enlarges R86 by 41.26,4 %. For a 25mm HDPE moderator with gadolinium shielding, these percentages are 37.2 % and 9.9 %, respectively.

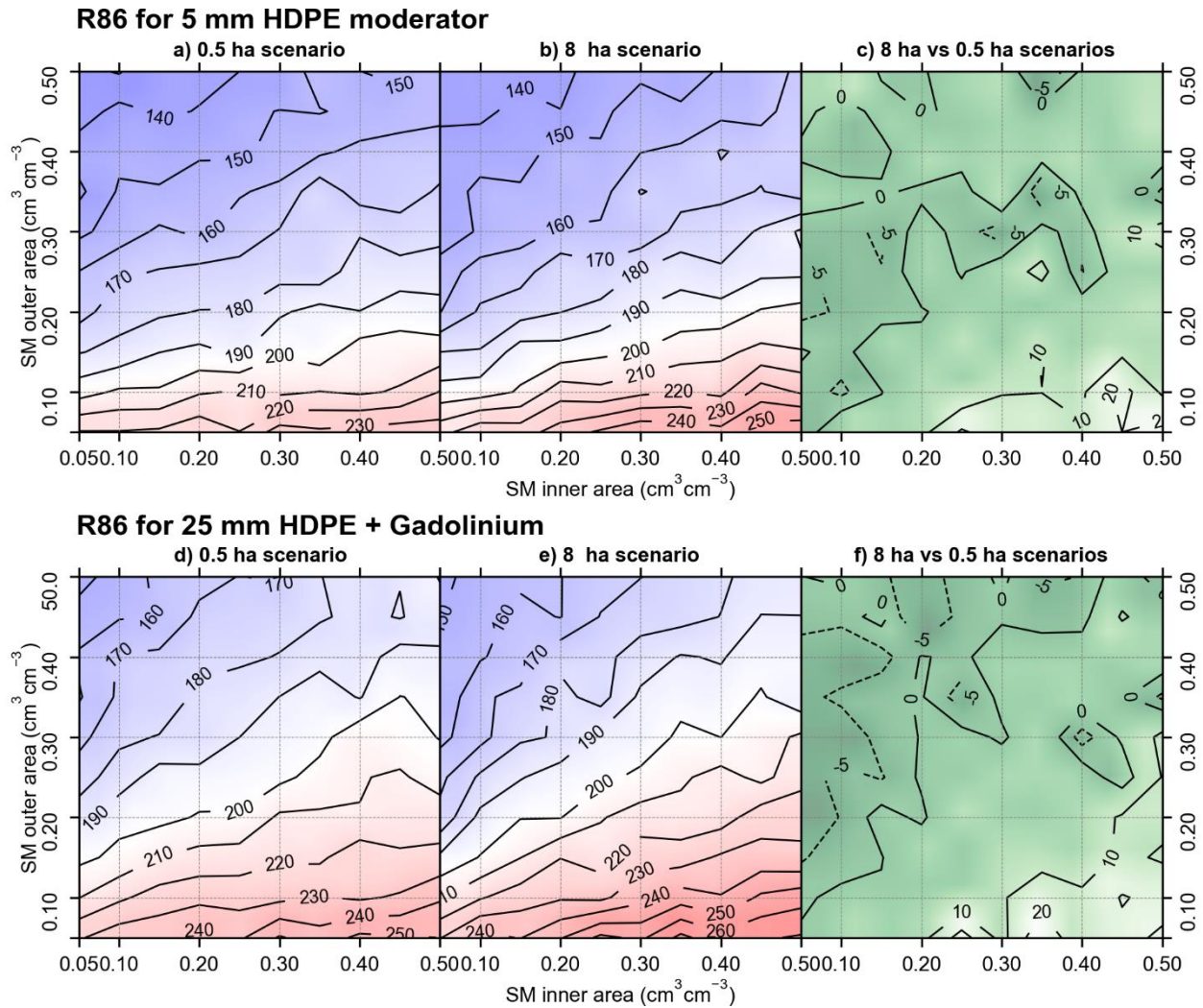


Figure 45: Variation of R86 with SM using a 25 mm HDPE moderator with gadolinium shielding for the a) 0.5 ha, and b) 1 ha, e) 2 ha, d) 4 ha, and e) 8 ha scenario and using a 25 mm HDPE moderator with gadolinium shielding for d) 0.5 ha and e) 8 ha scenario. The differences between the 8 ha and 0.5 ha scenarios are shown in cf) for the 5 mm HDPE moderator and in f) for the 25 mm

HDPE moderator with gadolinium shielding. Here, negative values indicate that the footprint of the 8 ha scenario is smaller than that of the 0.5 ha and vice versa.

3.2 Detected albedo neutrons and their origin

For each dimension of the simulated inner area and for each moderator type, Table 2 shows the minimum and maximum percentages of detected (albedo plus non-albedo) neutrons that originate in the inner area depending on SM conditions. This percentage represents the detected neutrons that originate within an irrigated field and thus carry the bulk of the information of interest in case of irrigation applications. Considerable differences are found between simulations depending on the SM in the inner and outer area. The dimension of the irrigated area also influences the results. In particular, 27.7 % to 61.1 % of the detected neutrons originate from within a 0.5 ha irrigated field whereas larger fields show higher percentages (e.g., 50.7 % to 85.3 % from within an 8 ha field). In addition, thinner moderators generally show a higher percentage of detected neutrons from the inner area.

Table 2: Minimum and maximum percentage of detected (albedo plus non-albedo) neutrons originating within the inner area depending on SM conditions with different moderators and different scenarios. The colour in each cell indicates the mean percentage with low values in white and high values in grey.

<u>Moderator</u>	<u>Scenario (inner area dimension)</u>				
	<u>0.5 ha</u>	<u>1 ha</u>	<u>2 ha</u>	<u>4 ha</u>	<u>8 ha</u>
<u>5 mm</u>	34.5 - 61.1	41.0 - 67.9	48.1 - 75.1	57.7 - 81.4	66.4 - 85.3
<u>10 mm</u>	32.0 - 59.9	38.3 - 66.1	44.7 - 72.8	53.9 - 78.9	62.3 - 83.0
<u>15 mm</u>	30.5 - 59.0	36.5 - 64.9	42.4 - 71.2	51.1 - 77.0	59.2 - 81.2
<u>20 mm</u>	29.4 - 58.1	34.9 - 63.6	40.4 - 69.4	48.5 - 75.0	56.1 - 79.2
<u>25 mm</u>	28.8 - 57.6	34.1 - 62.9	39.3 - 68.5	47.0 - 73.9	54.4 - 78.0
<u>25 mm Gad</u>	27.3 - 57.3	32.6 - 62.5	37.5 - 68.1	45.1 - 73.5	52.4 - 77.9
<u>30 mm</u>	28.2 - 57.0	33.3 - 61.9	38.2 - 67.3	45.5 - 72.6	52.4 - 76.6
<u>35 mm</u>	27.7 - 56.4	32.5 - 61.1	37.2 - 66.3	44.1 - 71.3	50.7 - 75.3

Figure 5a shows the variation of the percentage of detected albedo neutrons that originate in the inner or in the outer area for the 0.5 ha scenario as a function of the SM of both areas for a detector with 25 mm HDPE moderator and gadolinium shielding, which shows the lowest percentages in Table 2. Non-albedo neutrons are not considered in Figure 5 and the reader is referred to Appendix A for a more detailed description of such detected non-albedo neutrons. Clearly, the fraction of neutrons originating in the inner and outer area strongly depends on SM. The percentage of neutrons originating in the inner area is smallest when the inner area is wet and the outer area is dry (31.4%). This percentage increases up to 58.0% if the SM in the inner area is reduced to $0.05 \text{ cm}^3 \text{ cm}^{-3}$ and then to 69.6% when the SM of the outer area increases to $0.50 \text{ cm}^3 \text{ cm}^{-3}$. The percentage of neutrons originating in the outer area shows the opposite trend. From these results, it is clear why CRNS applications focused on irrigation of small fields can face considerable challenges. Especially in small, irrigated fields, the

number of detected neutrons that originate outside the irrigated area can be higher than the number of neutrons that originate inside of the irrigated area. This is especially true when the SM outside the irrigated area is relatively low, which is often the case when the inner area is irrigated. Figure 5b presents the same analysis for an 8 ha field. Here, the percentage of neutrons from the inner area is higher than in the 0.5 ha scenario and shows a lower overall variation. Again, the lowest percentage of detected neutrons originating from the inner area (67.6%) is found when the inner area is wet and the outer area is dry, whereas the highest value (90.4%) is found with reversed SM conditions.

385

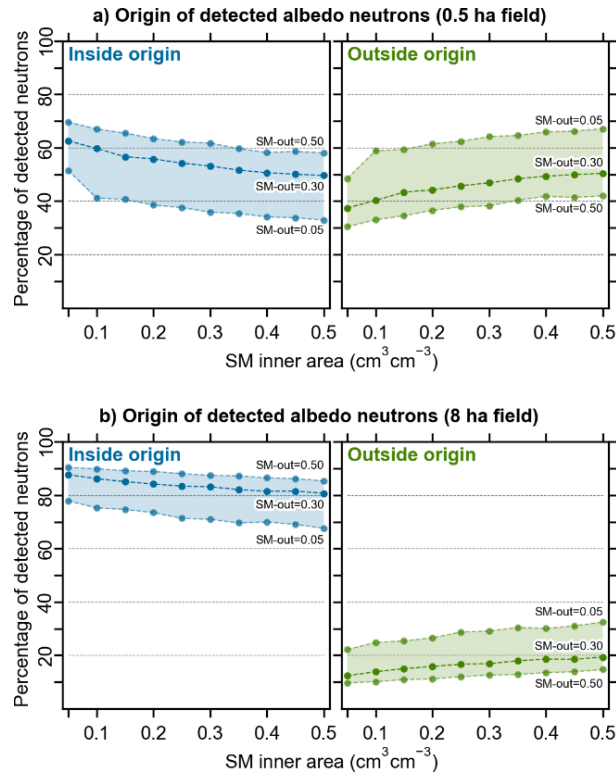


Figure 5: Percentages of detected neutrons that originate in the inner and outer area for a) the 0.5 ha scenario and b) the 8 ha scenario. These results are shown for a detector with a 25 mm HDPE moderator with gadolinium shielding.

390

3.3 Effect of spatial heterogeneity on the relationship between neutron counts and SM

The relationship between neutron count rate and SM ~~was~~has been mostly investigated for homogeneous SM conditions. Here, we also explore the effect of SM variations that occur only within an inner area that surrounds the instrument (e.g., through irrigation ~~measures~~). We considered sizes of the inner irrigated area from 0.5 to 8 ha and two opposite wetness situations for the outer area (i.e., SM of 0.05 and 0.50 cm³ cm⁻³). In addition, we considered the effect of the thickness of the moderator and additional shielding on the number of detected neutrons. In ~~Figure 6~~Figure 6 and in ~~Figure 7~~Figure 7, the neutron counts of the different simulations are scaled to the case with the highest count rates (SM of 0.05 cm³ cm⁻³

395

everywhere in the simulated domain). Generally, neutron count rates show a non-linear negative relationship with increasing SM in the irrigated area. The detector with a 5 mm HDPE moderator shows the smallest relative changes in neutron counts (Figure 6). Thicker HDPE moderators (i.e., 15, 25, and 35 mm) result in larger relative changes. The largest difference in relative changes is observed between a 5 mm and a 15 mm HDPE moderators whereas the differences between a 25 mm and a 35 mm HDPE moderator are rather small. The highest relative change in number of detected neutrons occurs for a 25 mm HDPE moderator with gadolinium shielding. Nonetheless, the described sensitivities are lower than with a homogeneous SM change in the entire domain (grey circles and squares in Figure 6). This-The relatively high sensitivity of the 25 mm HDPE moderator with gadolinium shielding seems to contradict the relatively large R86 values as well as the relatively low percentage of detected neutrons that originate within the irrigated area found for such moderator, the 25 mm HDPE moderator with gadolinium shielding. This is attributed to and is likely due to small relative variations of the R86 between different moderators and to the low amount of detected thermal neutrons (< 5%), that-which only contain limited SM information (see Appendix B). The SM in the outer area also has an influence on the results, although to a lesser degree. For example, a SM of $0.50 \text{ cm}^3 \text{ cm}^{-3}$ in the outer area (Figure 6b) leads to greater variations in detected neutrons than a SM of $0.05 \text{ cm}^3 \text{ cm}^{-3}$ in the outer area (Figure 6a).

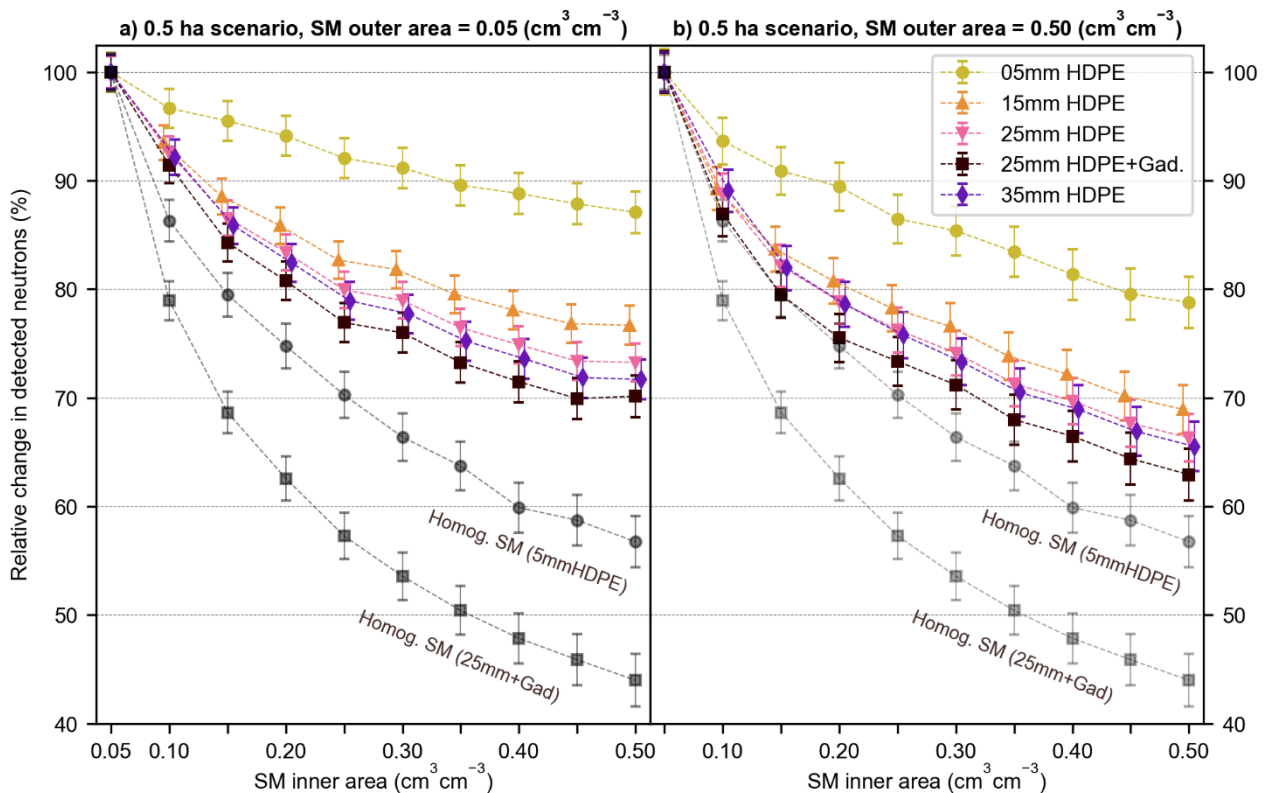


Figure 6: Relative change in number of detected neutrons due to SM variations obtained using different moderators (i.e., 5, 15, 25, 35 mm HDPE and 25 mm HDPE with gadolinium shielding) for a) $0.05 \text{ cm}^3 \text{ cm}^{-3}$ SM and b) $0.50 \text{ cm}^3 \text{ cm}^{-3}$ SM in the outer area of

a 0.5 ha field. The error bars indicate the relative error of the simulations. Grey circles and squares indicate the relative change for two selected moderators when the SM changes from 0.05 to 0.50 cm³ cm⁻³ are applied to the entire simulation domain.

The neutron count rates obtained with a 25 mm HDPE moderator with gadolinium shielding for sizes of the irrigated areas ranging from 0.5 to 8 ha are shown in Figure 7Figure-7. An increased size of the irrigated area results in larger relative changes in the number of detected neutrons with SM variations, especially when the outer area is dry (Figure 7Figure-7a). Higher SM of 0.50 cm³ cm⁻³ in the outer area (Figure 7Figure-7b) results in larger relative changes in the number of detected neutrons, although this is mostly the case for relatively small dimensions of the irrigated area. For the 8 ha scenario, the impact of the SM in the outer area is very limited.

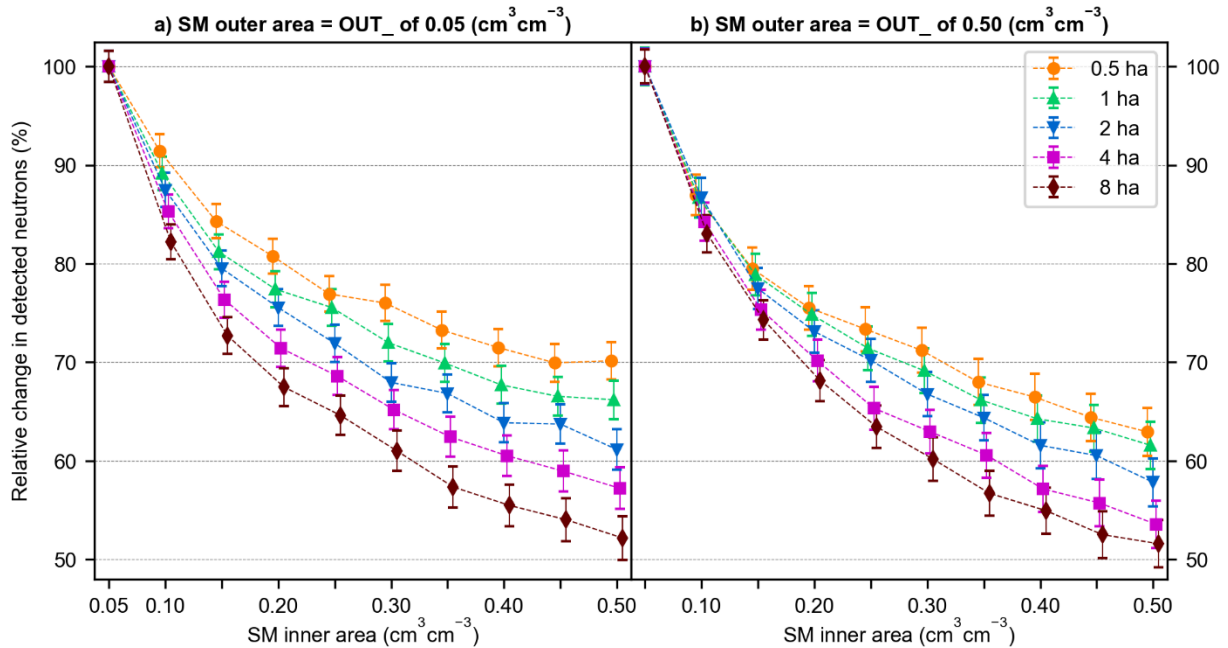
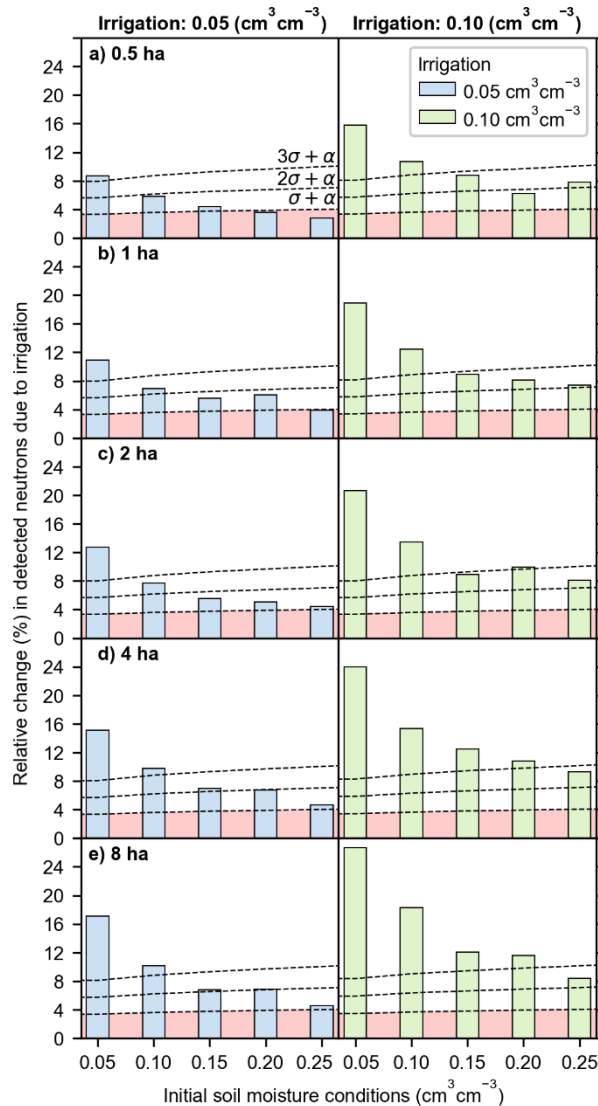


Figure 7: Relative change in number of detected neutrons using a 25 mm HDPE moderator with gadolinium shielding for different dimensions of the irrigated area and two different SM in the outer area: a) 0.05 cm³ cm⁻³ and b) 0.50 cm³ cm⁻³. The error bars indicate the relative error of the simulations.

Generally, larger relative changes in detected neutrons with SM variations lead to an improved performance of a given CRNS in a certain environment. Thus, our analysis shows that the CRNS performance in an irrigated environment depends on both the moderator type and the SM outside of the irrigated area. However, the effect of different moderator types on the performance is stronger. A relatively thin HDPE moderator will generally result in low changes of the neutron count rate with SM variations, independent from the dimension of the irrigated field. A thicker HDPE moderator will provide higher neutron count changes and thus better sensitivity to SM changes in the inner area. Overall, a 25 mm HDPE moderator with gadolinium thermal shielding achieves the best results.

3.4 CRNS sensitivity to irrigation events

The sensitivity of a CRNS is further analyzed to assess if it is possible to detect irrigation events in fields between 0.5 and 8 ha in size (Figure 8). A 25mm HDPE moderator with gadolinium shielding is used as it provides larger relative changes in the neutron count rate compared to the other investigated moderators. An irrigation event is assumed to increase the SM of the irrigated area by 0.05 or by 0.10 cm³cm⁻³ starting from a homogeneous SM condition within the domain. The detection thresholds (see Figure 8) are based on the relative error (σ) of the simulations (Eq. 1), which varied between 2.3 and 3.4 % depending on the number of detected neutrons.



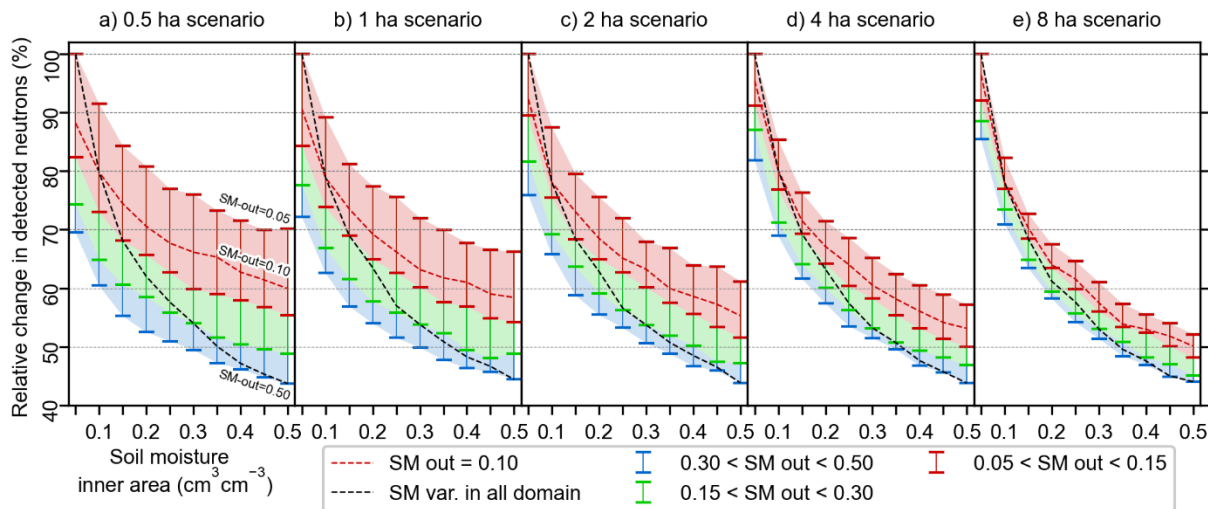
445 **Figure 8: CRNS chance of detecting irrigation events of $0.05 \text{ cm}^3 \text{ cm}^{-3}$ (blue and green bars respectively) in a) 0.5 ha, b) 1 ha, c) 2 ha, d) 4 ha, and e) 8 ha irrigated fields. The bars show the relative change in detected neutrons induced by the irrigation event while the dashed lines show the prescribed detection certainty thresholds. The red area below the $\sigma + \alpha$ threshold indicates uncertain detection.**

As shown in [Figure 8](#), an irrigation event that leads to a $0.05 \text{ cm}^3 \text{ cm}^{-3}$ increase in SM can be detected with CRNS
 450 (relative change in detected neutrons higher than $3\sigma + \alpha$) when the initial SM of the simulation domain is $0.05 \text{ cm}^3 \text{ cm}^{-3}$. This is the case for all five investigated dimensions of the irrigated area. In the case of 4 ha and 8 ha fields, detection of this type of irrigation event is also achieved with an initial SM of $0.10 \text{ cm}^3 \text{ cm}^{-3}$. For ~~values of~~ initial SM larger than $0.05 \text{ cm}^3 \text{ cm}^{-3}$, the chance of detecting irrigation events depends on the dimension of the irrigated area with larger irrigated fields yielding higher detection chances. Overall, the detection of a $0.05 \text{ cm}^3 \text{ cm}^{-3}$ irrigation event is uncertain (relative change in

455 detected neutrons lower than $\sigma + \alpha$) when the initial SM is $0.2015 \text{ cm}^3 \text{ cm}^{-3}$ or higher in a 0.5 ha field (Figure 8a) or $0.25 \text{ cm}^3 \text{ cm}^{-3}$ in 1 ha and 2 ha fields (Figure 8b-e). Irrigation events that induce larger SM variations of $0.10 \text{ cm}^3 \text{ cm}^{-3}$ result in larger relative changes in detected neutrons and thus have a higher chance of detection. Here, the CRNS detects irrigation events with initial SM up to $0.10 \text{ cm}^3 \text{ cm}^{-3}$ in 0.5, 1, and 2 ha fields, and with initial SM up to $0.20 \text{ cm}^3 \text{ cm}^{-3}$ in 4 ha and 8 ha fields. If the investigation of a $0.10 \text{ cm}^3 \text{ cm}^{-3}$ irrigation event is extended to higher initial SM (i.e., 0.30 to $0.40 \text{ cm}^3 \text{ cm}^{-3}$), the only uncertain detection (lower than $\sigma + \alpha$) is that of an initial starting SM of $0.40 \text{ cm}^3 \text{ cm}^{-3}$ in a 0.5 ha field (not shown).

3.5 Influence of SM in the outer area

In fields between 0.5 ha and 8 ha, a CRNS is not only sensitive to the irrigation of the target field but also to SM variations in the outer area (i.e., precipitation events or irrigation of neighbouring fields). It is thus important to assess the impact of SM variations that occur outside the field of interest. Figure 9 shows the relationships between SM variations (that occur in the inner area, in the outer area, or in both areas as well) and the consequent resulting relative changes in detected neutrons for a 25 mm HDPE moderator with gadolinium shielding. SM variations that are limited to the irrigated field show a reduced sensitivity of the relative change in neutron count rate compared to the case where SM variations occur homogeneously in the entire domain, which is due to the influence of the SM value in the outer area. The strongest reduction in the sensitivity of this relationship is found for the 0.5 ha field (Figure 9a). The sensitivity increases with larger dimensions of the irrigated area and the observed reduction is lowest in the case of the 8 ha field (Figure 9e).



475 **Figure 9: Relative changes in detected neutrons due to SM variations in a) 0.5 ha, b) 1 ha, c) 2 ha, d) 4 ha, and e) 8 ha irrigated areas. The black dashed line shows SM variations that are homogeneous within the simulated domain. The red dashed lines and the error bars indicate SM variations that occur only within the irrigated area for a different SM in the outer area.**

In the case of a 0.5 ha irrigated field, SM variations in the outer area generally induce a higher relative change in detected neutrons compared to SM variations that occur within the irrigated area. For example, a SM variation from 0.05 to 0.10 cm³ cm⁻³ in the outer area (Figure 9a) induces a larger relative change (-11.8%) compared to the same SM variation in the inner area (-8.6%). With larger irrigated areas, the influence of the outer area is reduced. In the 8 ha scenario, a SM variation from 0.05 to 0.10 cm³ cm⁻³ in the inner area induces a larger relative change in detected neutrons than that of a SM variation from 0.05 to 0.50 cm³ cm⁻³ in the outer area. These results suggest that it may be necessary to obtain SM information from the surroundings of a target field in real-world applications of CRNS-based irrigation monitoring.

It is also of interest to reduce this analysis to a smaller range of SM in the outer area (i.e., 0.05 to 0.15 cm³ cm⁻³) as this is generally the case in irrigated agricultural environments (shaded red area in Figure 9). In the case of 0.5 and 1 ha fields, a SM variation of 0.10 cm³ cm⁻³ in the outer area (red error bars in Figure 9a-b) produces a relative change of the neutron count rate that is higher than that of an irrigation event of 0.05 cm³ cm⁻³. This is not the case when the initial SM of the domain is 0.05 cm³ cm⁻³ in the 2 ha scenario (Figure 9c), 0.05 to 0.15 cm³ cm⁻³ in the 4 ha scenario (Figure 9d), and 0.05 to 0.20 cm³ cm⁻³ in the 8 ha scenario (Figure 9e). Overall, even if the range of the SM in the outer area is reduced, it can still have a considerable impact on the CRNS. This again underlines the importance of obtaining information on the SM in the outer area, especially in case of relatively small irrigated fields.

4 Limitations and outlook

The results of this study suggest ~~the feasibility of that~~ irrigation monitoring with CRNS is feasible for field dimensions and SM conditions that are relevant in irrigation applications. However, it is important to emphasize here that the presented simulation results constitute a best-case scenario as it assumes a square shape of the irrigated area, homogeneous SM changes in the inner irrigated area, as well as stable SM conditions in the surroundings. Different dimensions of the irrigated field, such as irregular or elongated shapes, might be more challenging for irrigation monitoring with CRNS. Moreover, the possible influence of additional other environmental conditions ~~(such as e.g., vegetation,~~ vertical SM distribution, ~~heterogeneous land cover~~ atmospheric variables (e.g., humidity), and ~~vegetation~~) was not considered here. For example, a heterogeneous vertical SM distribution may result in a reduction in performance of the CRNS if only the topsoil is wetted by an irrigation event. Additionally, air humidity, which affects the R86, could modify the contribution to detected neutrons of the irrigated field. Real-world irrigation monitoring may thus prove more challenging than what these results suggest as the accuracy of CRNS-based SM products may suffer from heterogeneities in SM and in environmental conditions. For example, the role of within-field SM heterogeneity should be further investigated as drip (Li et al., 2019), border strip, and lateral move irrigation can lead to an uneven SM distribution which can be exacerbated by soil heterogeneity and surface roughness. Moreover, SM information from the surroundings of a target field may be necessary to correct CRNS-based SM products not only in relatively small fields (up to 2 ha) but also in larger ones. Real-world studies should thus assess in more detail the influence of the shape of the irrigated field and of the within-field heterogeneity as well as the need-benefit of SM

510 ~~measurements outside the irrigated field for such information in the correction of CRNS-based SM products for irrigation applications.~~ For this, a CRNS installed in an irrigated field could be supported by a single and inexpensive point-scale SM monitoring instruments installed outside the~~could be used to periodically retrieve SM values outside of a~~ target field. Such addition would not substantially increase the installation and maintenance costs and would not interfere with agricultural management. Moreover, a single point-scale device could support multiple CRNS in an agricultural area if irrigated fields
515 are sufficiently distanced and if the SM in the unmanaged area is relatively homogeneous in space. Within this context, Monte Carlo simulations of neutron transport represent an added value as they inform on the relative contribution from the surroundings of an irrigated field to the neutron count. Future research should investigate if generalized neutron transport simulations are sufficiently accurate or if simulations should be tailored to a target irrigated area. As a result, Monte Carlo simulation results
520 ~~In addition, although simulations only offer a simplification of actual conditions, they~~ could be employed before installation to provide farmers with an estimate of the costs and benefits of a CRNS-based irrigation monitoring system.

5 Conclusions

This study explores the feasibility of irrigation monitoring with CRNS by using Monte Carlo neutron transport simulations. Specifically, it investigates the influence of the moderator type, the dimensions of the irrigated area, and of the SM variations
525 within and outside the irrigated area. Results show that the CRNS footprint (R86) depends both on the SM in the irrigated area and its surroundings as well as, to a lesser degree, on the moderator type and on the dimension of the irrigated area. Generally, detectors with thinner HDPE moderators result in smaller footprints although differences between the investigated moderators are relatively small. Regarding the origin of detected neutrons, a considerable fraction of the detected neutrons can originate from outside the irrigated region, which may represent a challenge in CRNS-based irrigation
530 monitoring. This fraction varies considerably with the size of the irrigated area. Relatively higher contributions from the irrigated field are obtained for larger sizes of the irrigated area (e.g., 28% to 61% in 0.5 ha and 51% to 85% in 8 ha), higher SM outside the irrigated area, and, to a lesser degree, by detectors with thin HDPE moderators. ~~The CRNS footprint depends both on the SM in the irrigated area and its surroundings as well as, to a lesser degree, on the moderator type and on the dimension of the irrigated area. Generally, detectors with thinner HDPE moderators result in smaller footprints and thus in~~
535 ~~stronger contributions from the irrigated field. However~~Despite a relatively larger R86 combined with lower contributions from the irrigated field, thicker HDPE moderators and the addition of a thermal shielding result in higher relative changes in detected neutrons with respect to SM variations. Thus, such moderator types are expected to bring improvements in CRNS-based irrigation monitoring.

540 A CRNS with a 25 mm HDPE moderator and gadolinium shielding can detect irrigation events that increase SM by $0.05 \text{ cm}^3 \text{ cm}^{-3}$ even in fields as small as 0.5 ha when the SM in the entire simulated domain is $0.05 \text{ cm}^3 \text{ cm}^{-3}$. Detection is uncertain in

a 0.5 ha field when initial SM ~~was is~~ 0.20-5 $\text{cm}^3 \text{cm}^{-3}$ or higher and again uncertain in 1 ha ~~and 2 ha~~ fields when initial SM ~~was is above~~ 0.25 $\text{cm}^3 \text{cm}^{-3}$ ~~or above~~. Higher detection chances are found in the case of irrigation events that increased SM by $0.10 \text{ cm}^3 \text{cm}^{-3}$. Generally, larger irrigated fields, lower initial SM, and higher SM variations due to irrigation provided higher chances of detection. Using the same moderator, the relationship between relative changes in detected neutrons and SM variations for irrigated fields shows a reduced sensitivity compared to the case of homogeneous SM variations within the entire simulated domain. Such sensitivity reduction is due to the influence of SM from the outer area and is stronger in small, irrigated fields compared to large ones. If SM in the outer area of 0.5 and 1 ha fields is between 0.05 and $0.15 \text{ cm}^3 \text{cm}^{-3}$, it is generally not possible to distinguish whether a relative change in detected neutrons is due to irrigation or to SM variations in the surroundings. On the contrary, in an 8 ha field, irrigation-related SM variations of $0.05 \text{ cm}^3 \text{cm}^{-3}$ can be identified up to a maximum SM of $0.20 \text{ cm}^3 \text{cm}^{-3}$, independently from the SM of the surrounding area. The results suggest the importance of obtaining information on the SM of the outer area in real-world applications of CRNS-based irrigation monitoring.

Overall, this study shows that CRNS can be successfully employed in irrigation monitoring for both field dimensions and SM conditions that are relevant in irrigation applications. Nonetheless, real-world conditions may prove challenging due to the presence of additional factors and limitations that were not considered in this study. For example, vertical and horizontal heterogeneous SM variations within the irrigated field should be investigated in future studies as well as different shapes of the irrigated field. Moreover, the use of SM information from the surroundings of an actual irrigated field with limited size could be considered to correct CRNS-based irrigation products by combining actual measurements with Monte Carlo simulations. Prior to installation, Monte Carlo simulations could also be employed to assess the costs and benefits of a given detector in a specific irrigated environment. In the long run, the combination of simulations and real-world installations should be considered to establish CRNS as a decision support system for irrigation management and thus provide an additional tool to improve water use efficiency in agriculture.

Appendix A

In all the 500 simulations, the percentage of non-albedo detected neutrons varied with SM variations and with the type of moderator (Table A 1~~Table A-1~~). Non-albedo neutrons represented a considerable percentage of the total detected neutrons. No meaningful variations were obtained with different dimensions of the irrigated area. Thick moderators resulted in higher percentages of detected non-albedo neutrons compared to thin moderators (e.g., 5.5 to 9.9 % with a 5 mm HDPE moderator and 15.2 to 31.8 % with a 35 mm HDPE moderator).

Table A 1: Minimum and maximum percentage of non-albedo neutrons detected with different moderators and different scenarios. The colour in each cell indicates the mean percentage with low values in white and high values in grey.

Moderator	Scenario (inner area dimension)				
	0.5 ha	1 ha	2 ha	4 ha	8 ha

5 mm	5.5 - 9.9	5.5 - 10.1	5.5 - 9.8	5.6 - 9.7	5.8 - 9.9
10 mm	7.4 - 14.5	7.4 - 14.7	7.3 - 14.5	7.5 - 14.4	7.8 - 14.6
15 mm	9.1 - 18.5	9.1 - 18.6	8.9 - 18.7	9.2 - 18.5	9.4 - 18.7
20 mm	11.1 - 23	11.1 - 22.9	10.9 - 23.3	11.2 - 23.0	11.3 - 23.2
25 mm	12.2 - 25.6	12.2 - 25.5	12.1 - 25.8	12.4 - 25.5	12.4 - 25.8
25 mm + Gad.	12.1 - 27.2	12.1 - 27.1	11.9 - 27.5	12.3 - 27.2	12.3 - 27.3
30 mm	13.7 - 28.7	13.7 - 28.6	13.6 - 29.0	13.9 - 28.5	13.9 - 29.0
35 mm	15.2 - 31.5	15.2 - 31.3	15.0 - 31.8	15.4 - 31.3	15.3 - 31.8

Appendix B

Thermal neutrons were found to have a smaller footprint compared to epithermal neutrons (Jakobi et al., 2021). The number of detected thermal neutrons and their percentage among all detected neutrons changes abruptly when different moderators are used (Figure B 1Figure B-1). A moderator of 5 mm HDPE results in thermal neutrons being above the 50% level of detected neutrons. Such percentage can be reduced by increasing the thickness of the HDPE moderator and by adding a gadolinium shielding. Moderators that detect more thermal neutrons will result in smaller footprint compared to other detectors (see Figure 3Figure-3 and Figure 4Figure-4) and, likely, in more detected neutrons originating within an irrigated field (see Table 2Table-2).

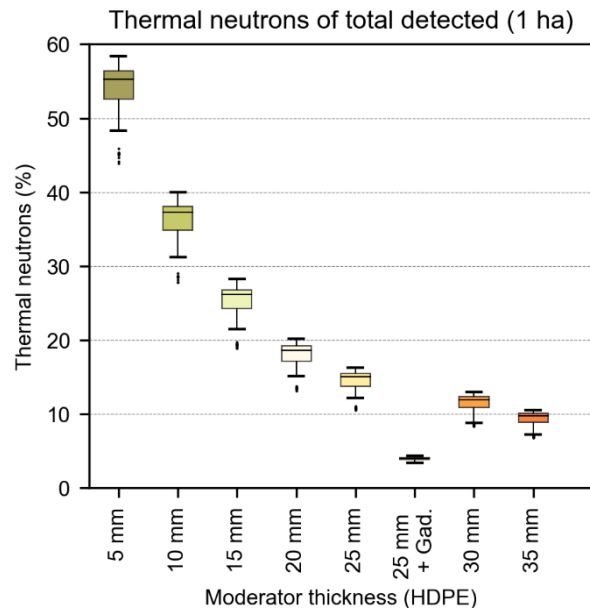


Figure B 1: Boxplot of the percentage of detected thermal neutrons over the total number of neutrons that are detected neutrons with different moderator types for the 1 ha scenario (each boxplot shows the results of 100 simulations).

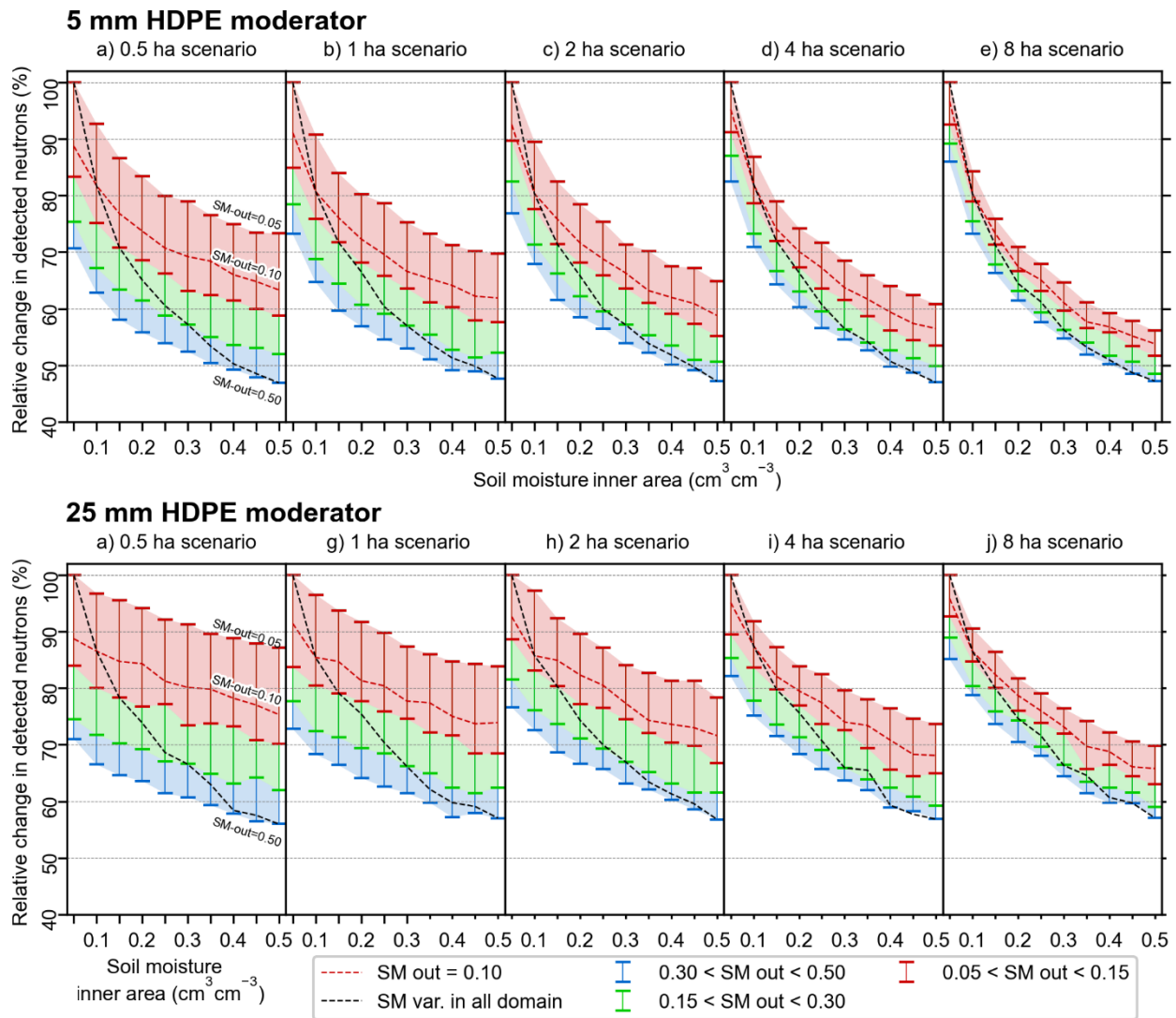
585 Table B 1 shows that the variation in detected thermal neutrons that originate within a 1 ha irrigated field is rather small with a 5 mm HDPE moderator (although it should be noted that the relative errors are not negligible as detected thermal neutrons range between ~700 and ~800). Consequently, thermal neutrons can concentrate the instrument footprint over a small area (e.g., an irrigated field) but this might not be followed by an added value in the detection of SM changes within such area.

590 **Table B 1: Thermal neutrons with origin in IN_1ha detected with a 5mm HDPE moderator and expressed as a fraction of the maximum value (i.e., 840 thermal neutrons detected with SM of $10 \text{ cm}^3 \text{ cm}^{-3}$ in IN_0.5ha and $0.05 \text{ cm}^3 \text{ cm}^{-3}$ in OUT_0.5ha).**

		SM ($\text{cm}^3 \text{ cm}^{-3}$) in the 1 ha field									
		0.05	0.10	0.15	0.20	0.25	0.30	0.30	0.40	0.45	0.50
SM in outer area	0.50	0.92	0.95	0.98	0.90	0.92	0.91	0.89	0.81	0.85	0.84
	0.45	0.94	0.96	0.96	0.95	0.97	0.91	0.89	0.86	0.84	0.79
	0.40	0.91	0.96	0.99	0.96	0.94	0.92	0.88	0.86	0.82	0.84
	0.35	0.94	0.93	0.98	0.98	0.94	0.93	0.86	0.85	0.86	0.83
	0.30	0.92	0.95	0.98	0.95	0.97	0.92	0.87	0.86	0.81	0.82
	0.25	0.91	0.98	0.96	0.97	0.97	0.89	0.91	0.87	0.82	0.82
	0.20	0.91	0.95	0.95	0.94	0.95	0.90	0.88	0.87	0.83	0.83
	0.15	0.90	0.96	0.99	0.97	0.96	0.94	0.92	0.89	0.83	0.81
	0.10	0.94	0.95	0.97	0.95	0.94	0.89	0.89	0.84	0.83	0.81
	0.05	0.95	1.00	0.98	0.96	0.92	0.92	0.88	0.84	0.85	0.82

Appendix C

595 Figure C 1, shows the relationship between SM variations (that occur in the inner area, in the outer area, or in both) and the consequent relative change in detected neutrons as well as the influence of the SM outside the irrigated field. This is shown for a 5 mm HDPE (Figure C 1a-e) and a 25 mm HDPE moderators (Figure C 1f-j). Compared to a 25 mm HDPE moderator with gadolinium shielding (Figure 9), the 25 mm HDPE and 5 mm HDPE moderators show a generally lower sensitivity and higher influence of the SM outside the irrigated field, especially for the 5 mm HDPE moderator version.



600 **Figure C 1: Relative changes in detected neutrons due to SM variations in a) 0.5 ha, b) 1 ha, c) 2 ha, d) 4 ha, and e) 8 ha irrigated areas for a 5 mm HDPE moderator and in f) 0.5 ha, g) 1 ha, h) 2 ha, i) 4 ha, and l) 8 ha for a 25 mm HDPE moderator. The black dashed line shows SM variations that are homogeneous within the simulated domain. The red dashed lines and the error bars indicate SM variations that occur only within the irrigated area for a different SM in the outer area.**

Data availability

605 Data are available upon contacting the authors. The URANOS model can be downloaded at the following address:
<http://www.ufz.de/uranos> (last access: 29.06.2022).

Author contributions

Conceptualization CB HRB MK, methodology CB HRB MK, investigation CB MK, methodology finalization CB HRB MK
610 JAH HJHF OD, writing - original draft preparation CB. writing - review and editing CB HRB MK JAH HJHF OD. All
authors have read and agreed to the published version of the manuscript.

Competing interests

M. Köhli holds a CEO position at StyX Neutronica GmbH.

Acknowledgements

This research received the support from the ATLAS project funded through the EU's Horizon 2020 research and innovation
615 program under grant agreement No. 857125 and from the DFG 425 (German Research Foundation) via the project
357874777, research unit FOR 2694 Cosmic Sense.

References

- Abioye, E. A., Abidin, M. S. Z., Mahmud, M. S. A., Buyamin, S., Ishak, M. H. I., Abd Rahman, M. K. I., Otuoze, A. O., Onotu, P., and
620 Ramlı, M. S. A.: A review on monitoring and advanced control strategies for precision irrigation, *Computers and Electronics in
Agriculture*, 173, 105441, 2020.
- Adeyemi, O., Grove, I., Peets, S., and Norton, T.: Advanced monitoring and management systems for improving sustainability in precision
irrigation, *Sustainability*, 9, 353, 2017.
- Andreasen, M., Jensen, K. H., Zreda, M., Desilets, D., Bogena, H., and Looms, M. C.: Modeling cosmic ray neutron field measurements,
625 *Water Resources Research*, 52, 6451-6471, 2016.
- Baatz, R., Bogena, H., Hendricks Franssen, H. J., Huisman, J., Montzka, C., and Vereecken, H.: An empirical vegetation correction for
soil water content quantification using cosmic ray probes, *Water Resources Research*, 51, 2030-2046, 2015.
- Baatz, R., Franssen, H.-J. H., Han, X., Hoar, T., Bogena, H., and Vereecken, H.: Evaluating the value of a network of cosmic-ray probes
for improving land surface modeling, *Hydrol. Earth Syst. Sci.*, 21, 2509-2530, 2017.
- 630 Badioe, A., Wallbank, J. R., Fentanes, J. P., Trill, E., Scarlet, P., Zhu, Y., Cielniak, G., Cooper, H., Blake, J. R., and Evans, J. G.: Using
additional moderator to control the footprint of a COSMOS Rover for soil moisture measurement, *Water Resources Research*, 57,
e2020WR028478, 2021.
- Baroni, G., Scheffele, L., Schrön, M., Ingwersen, J., and Oswald, S.: Uncertainty, sensitivity and improvements in soil moisture
estimation with cosmic-ray neutron sensing, *Journal of Hydrology*, 564, 873-887, 2018.
- 635 Binley, A., Hubbard, S. S., Huisman, J. A., Revil, A., Robinson, D. A., Singha, K., and Slater, L. D.: The emergence of hydrogeophysics
for improved understanding of subsurface processes over multiple scales, *Water Resources Research*, 51, 3837-3866,
10.1002/2015WR017016, 2015.
- Bogena, H., Herbst, M., Huisman, J., Rosenbaum, U., Weuthen, A., and Vereecken, H.: Potential of wireless sensor networks for
measuring soil water content variability, *Vadose Zone Journal*, 9, 1002-1013, 2010.
- 640 Bogena, H., Huisman, J., Baatz, R., Hendricks Franssen, H. J., and Vereecken, H.: Accuracy of the cosmic-ray soil water content probe in
humid forest ecosystems: The worst case scenario, *Water Resources Research*, 49, 5778-5791, 2013.
- Bogena, H., Huisman, J., Güntner, A., Hübner, C., Kusche, J., Jonard, F., Vey, S., and Vereecken, H.: Emerging methods for noninvasive
sensing of soil moisture dynamics from field to catchment scale: A review, *Wiley Interdisciplinary Reviews: Water*, 2, 635-647, 2015.
- Bogena, H., Herrmann, F., Jakobi, J., Brogi, C., Ilias, A., Huisman, J., Panagopoulos, A., and Pinaras, V.: Monitoring of snowpack
dynamics with cosmic-ray neutron probes: A comparison of four conversion methods, *Frontiers in water*, 2, 19, 2020.

- 645 Bogena, H., Schrön, M., Jakobi, J., Ney, P., Zacharias, S., Andreasen, M., Baatz, R., Boorman, D., Duygu, B., and Eguibar-Galán, M.: COSMOS-Europe: A European Network of Cosmic-Ray Neutron Soil Moisture Sensors, *Earth System Science Data Discussions*, 1-33, 2022.
- Broggi, C., Bogena, H., Vereecken, H., and Brocca, L.: Soil processes in the hydrologic cycle, in: *Encyclopedia of Soils in the Environment*, second edition, in publication, 2022.
- 650 Chadwick, M. B., Herman, M., Obložinský, P., Dunn, M. E., Danon, Y., Kahler, A., Smith, D. L., Pritychenko, B., Arbanas, G., and Arcilla, R.: ENDF/B-VII. 1 nuclear data for science and technology: cross sections, covariances, fission product yields and decay data, *Nuclear data sheets*, 112, 2887-2996, 2011.
- Chrisman, B. and Zreda, M.: Quantifying mesoscale soil moisture with the cosmic-ray rover, *Hydrology and Earth System Sciences*, 17, 5097-5108, 2013.
- 655 Crow, W. T., Berg, A. A., Cosh, M. H., Loew, A., Mohanty, B. P., Panciera, R., de Rosnay, P., Ryu, D., and Walker, J. P.: Upscaling sparse ground-based soil moisture observations for the validation of coarse-resolution satellite soil moisture products, *Reviews of Geophysics*, 50, 2012.
- Desilets, D., Zreda, M., and Ferré, T. P.: Nature's neutron probe: Land surface hydrology at an elusive scale with cosmic rays, *Water Resources Research*, 46, 2010.
- 660 Desilets, D. and Zreda, M.: Footprint diameter for a cosmic-ray soil moisture probe: Theory and Monte Carlo simulations, *Water Resources Research*, 49, 3566-3575, 2013.
- Dong, J., Ochsner, T. E., Zreda, M., Cosh, M. H., and Zou, C. B.: Calibration and validation of the COSMOS rover for surface soil moisture measurement, *Vadose Zone Journal*, 13, 2014.
- Elliott, J., Deryng, D., Müller, C., Frieler, K., Konzmann, M., Gerten, D., Glotter, M., Flörke, M., Wada, Y., Best, N., Eisner, S., Fekete, B. M., Folberth, C., Foster, I., Gosling, S. N., Haddeland, I., Khabarov, N., Ludwig, F., Masaki, Y., Olin, S., Rosenzweig, C., Ruane, A. C., Satoh, Y., Schmid, E., Stacke, T., Tang, Q., and Wisser, D.: Constraints and potentials of future irrigation water availability on agricultural production under climate change, *Proceedings of the National Academy of Sciences*, 111, 3239-3244, doi:10.1073/pnas.1222474110, 2014.
- Finkenbiner, C. E., Franz, T. E., Gibson, J., Heeren, D. M., and Luck, J.: Integration of hydrogeophysical datasets and empirical orthogonal functions for improved irrigation water management, *Precision agriculture*, 20, 78-100, 2019.
- 670 Francke, T., Heistermann, M., Köhli, M., Budach, C., Schrön, M., and Oswald, S. E.: Assessing the feasibility of a directional cosmic-ray neutron sensing sensor for estimating soil moisture, *Geoscientific Instrumentation, Methods and Data Systems*, 11, 75-92, 2022.
- Franz, T. E., Zreda, M., Ferre, T., and Rosolem, R.: An assessment of the effect of horizontal soil moisture heterogeneity on the area-average measurement of cosmic-ray neutrons, *Water Resources Research*, 49, 6450-6458, 2013.
- 675 Franz, T. E., Wahbi, A., Vreugdenhil, M., Weltin, G., Heng, L., Oismueller, M., Strauss, P., Dercon, G., and Desilets, D.: Using cosmic-ray neutron probes to monitor landscape scale soil water content in mixed land use agricultural systems, *Applied and Environmental Soil Science*, 2016, 2016.
- Franz, T. E., Wahbi, A., Zhang, J., Vreugdenhil, M., Heng, L., Dercon, G., Strauss, P., Brocca, L., and Wagner, W.: Practical data products from cosmic-ray neutron sensing for hydrological applications, *Frontiers in Water*, 2, 9, 2020.
- 680 Heistermann, M., Francke, T., Schrön, M., and Oswald, S. E.: Spatio-temporal soil moisture retrieval at the catchment scale using a dense network of cosmic-ray neutron sensors, *Hydrology and Earth System Sciences*, 25, 4807-4824, 2021.
- Iwema, J., Schrön, M., Koltermann Da Silva, J., Schweiser De Paiva Lopes, R., and Rosolem, R.: Accuracy and precision of the cosmic-ray neutron sensor for soil moisture estimation at humid environments, *Hydrological Processes*, 35, e14419, 2021.
- Jakobi, J., Huisman, J. H., Schrön, M., Fiedler, J., Brogi, C., Vereecken, H., and Bogena, H. R.: Error estimation for soil moisture measurements with cosmic-ray neutron sensing and implications for rover surveys, *Frontiers in Water*, 10.3389/frwa.2020.00010, 2020.
- 685 Jakobi, J., Huisman, J. A., Köhli, M., Rasche, D., Vereecken, H., and Bogena, H.: The footprint characteristics of cosmic ray thermal neutrons, *Geophysical Research Letters*, 48, e2021GL094281, 2021.
- Jakobi, J. C., Huisman, J. A., Fuchs, H., Vereecken, H., and Bogena, H.: Potential of thermal neutrons to correct cosmic-ray neutron soil moisture content measurements for dynamic biomass effects, 2022.
- 690 Kamali, B., Lorite, I. J., Webber, H. A., Rezaei, E. E., Gabaldon-Leal, C., Nendel, C., Siebert, S., Ramirez-Cuesta, J. M., Ewert, F., and Ojeda, J. J.: Uncertainty in climate change impact studies for irrigated maize cropping systems in southern Spain, *Scientific reports*, 12, 1-13, 2022.
- Kodama, M., Kudo, S., and Kosuge, T.: Application of atmospheric neutrons to soil moisture measurement, *Soil science*, 140, 237-242, 1985.
- 695 Köhli, M., Schrön, M., Zreda, M., Schmidt, U., Dietrich, P., and Zacharias, S.: Footprint characteristics revised for field-scale soil moisture monitoring with cosmic-ray neutrons, *Water Resources Research*, 51, 5772-5790, 2015.
- Köhli, M., Schrön, M., and Schmidt, U.: Response functions for detectors in cosmic ray neutron sensing, *Nuclear instruments and methods in physics research section A: Accelerators, spectrometers, detectors and associated equipment*, 902, 184-189, 2018.
- Köhli, M., Weimar, J., Schrön, M., Baatz, R., and Schmidt, U.: Soil moisture and air humidity dependence of the above-ground cosmic-ray neutron intensity, *Frontiers in Water*, 2, 66, 2021.
- 700

- Kukul, M. S. and Irmak, S.: Irrigation-limited yield gaps: trends and variability in the United States post-1950, *Environmental Research Communications*, 1, 061005, 2019.
- Li, D., Schrön, M., Kohli, M., Bogena, H., Weimar, J., Jiménez Bello, M. A., Han, X., Martínez-Gimeno, M. A., Zacharias, S., Vereecken, H., and Hendricks Franssen, H. J.: Can drip irrigation be scheduled with cosmic-ray neutron sensing?, *Vadose zone journal*, 18, 1-13, 2019.
- 705 Mohanty, B. P., Cosh, M. H., Lakshmi, V., and Montzka, C.: Soil moisture remote sensing: State-of-the-science, *Vadose Zone Journal*, 16, 1-9, 2017.
- Molden, D.: *Water for food water for life: A comprehensive assessment of water management in agriculture*, Routledge 2013.
- 710 Montzka, C., Bogena, H. R., Zreda, M., Monerris, A., Morrison, R., Muddu, S., and Vereecken, H.: Validation of spaceborne and modelled surface soil moisture products with cosmic-ray neutron probes, *Remote sensing*, 9, 103, 2017.
- Ney, P., Köhli, M., Bogena, H., and Goergen, K.: CRNS-based monitoring technologies for a weather and climate-resilient agriculture: realization by the ADAPTER project, 2021 IEEE International Workshop on Metrology for Agriculture and Forestry (MetroAgriFor), 203-208,
- 715 Pinaras, V., Paraskevas, C., and Panagopoulos, A.: Investigating the Effects of Agricultural Water Management in a Mediterranean Coastal Aquifer under Current and Projected Climate Conditions, *Water*, 13, 108, 2021.
- Ragab, R., Evans, J., Battilani, A., and Solimando, D.: The cosmic-ray soil moisture observation system (Cosmos) for estimating the crop water requirement: new approach, *Irrigation and drainage*, 66, 456-468, 2017.
- Rasche, D., Köhli, M., Schrön, M., Blume, T., and Güntner, A.: Towards disentangling heterogeneous soil moisture patterns in cosmic-ray neutron sensor footprints, *Hydrology and Earth System Sciences*, 25, 6547-6566, 2021.
- 720 Romano, P. K. and Forget, B.: The OpenMC monte carlo particle transport code, *Annals of Nuclear Energy*, 51, 274-281, 2013.
- Rosolem, R., Shuttleworth, W. J., Zreda, M., Franz, T. E., Zeng, X., and Kurc, S.: The effect of atmospheric water vapor on neutron count in the cosmic-ray soil moisture observing system, *Journal of Hydrometeorology*, 14, 1659-1671, 2013.
- Rost, S., Gerten, D., Bondeau, A., Lucht, W., Rohwer, J., and Schaphoff, S.: Agricultural green and blue water consumption and its influence on the global water system, *Water Resources Research*, 44, 2008.
- 725 Sato, T.: Analytical model for estimating terrestrial cosmic ray fluxes nearly anytime and anywhere in the world: Extension of PARMA/EXPACS, *PloS one*, 10, e0144679, 2015.
- Schattan, P., Baroni, G., Oswald, S. E., Schöber, J., Fey, C., Kormann, C., Huttenlau, M., and Achleitner, S.: Continuous monitoring of snowpack dynamics in alpine terrain by aboveground neutron sensing, *Water Resources Research*, 53, 3615-3634, 2017.
- 730 Schattan, P., Köhli, M., Schrön, M., Baroni, G., and Oswald, S. E.: Sensing area-average snow water equivalent with cosmic-ray neutrons: The influence of fractional snow cover, *Water Resources Research*, 55, 10796-10812, 2019.
- Schrön, M., Köhli, M., Scheiffle, L., Iwema, J., Bogena, H. R., Lv, L., Martini, E., Baroni, G., Rosolem, R., and Weimar, J.: Improving calibration and validation of cosmic-ray neutron sensors in the light of spatial sensitivity, *Hydrology and Earth System Sciences*, 21, 5009-5030, 2017.
- 735 Schrön, M., Rosolem, R., Köhli, M., Piussi, L., Schröter, I., Iwema, J., Kögler, S., Oswald, S., Wollschläger, U., and Samaniego, L.: Cosmic-ray neutron rover surveys of field soil moisture and the influence of roads, *Water Resources Research*, 54, 6441-6459, 2018a.
- Schrön, M., Zacharias, S., Womack, G., Köhli, M., Desilets, D., Oswald, S. E., Bumberger, J., Mollenhauer, H., Kögler, S., and Remmler, P.: Intercomparison of cosmic-ray neutron sensors and water balance monitoring in an urban environment, *Geoscientific Instrumentation, Methods and Data Systems*, 7, 83-99, 2018b.
- 740 Schrön, M., Köhli, M., and Zacharias, S.: Signal contribution of distant areas to cosmic-ray neutron sensors - implications on footprint and sensitivity, *EGUsphere*, 2022, 1-25, 10.5194/egusphere-2022-219, 2022.
- Seneviratne, S. I., Corti, T., Davin, E. L., Hirschi, M., Jaeger, E. B., Lehner, I., Orlowsky, B., and Teuling, A. J.: Investigating soil moisture-climate interactions in a changing climate: A review, *Earth-Science Reviews*, 99, 125-161, 2010.
- 745 Shibata, K., Iwamoto, O., Nakagawa, T., Iwamoto, N., Ichihara, A., Kunieda, S., Chiba, S., Furutaka, K., Otuka, N., and Ohsawa, T.: JENDL-4.0: a new library for nuclear science and engineering, *Journal of Nuclear Science and Technology*, 48, 1-30, 2011.
- Shuttleworth, J., Rosolem, R., Zreda, M., and Franz, T.: The COsmic-ray Soil Moisture Interaction Code (COSMIC) for use in data assimilation, *Hydrology and Earth System Sciences*, 17, 3205-3217, 2013.
- Siebert, S., Webber, H., Zhao, G., and Ewert, F.: Heat stress is overestimated in climate impact studies for irrigated agriculture, *Environmental Research Letters*, 12, 054023, 10.1088/1748-9326/aa702f, 2017.
- 750 Tack, J., Barkley, A., and Hendricks, N.: Irrigation offsets wheat yield reductions from warming temperatures, *Environmental Research Letters*, 12, 114027, 10.1088/1748-9326/aa8d27, 2017.
- Troy, T. J., Kipgen, C., and Pal, I.: The impact of climate extremes and irrigation on US crop yields, *Environmental Research Letters*, 10, 054013, 10.1088/1748-9326/10/5/054013, 2015.
- Vereecken, H., Huisman, J., Bogena, H., Vanderborght, J., Vrugt, J., and Hopmans, J.: On the value of soil moisture measurements in vadose zone hydrology: A review, *Water resources research*, 44, 2008.
- 755 Wagner, W., Blöschl, G., Pampaloni, P., Calvet, J.-C., Bizzarri, B., Wigneron, J.-P., and Kerr, Y.: Operational readiness of microwave remote sensing of soil moisture for hydrologic applications, *Hydrology Research*, 38, 1-20, 2007.

- Walker, J. P., Houser, P. R., and Willgoose, G. R.: Active microwave remote sensing for soil moisture measurement: a field evaluation using ERS-2, *Hydrological processes*, 18, 1975-1997, 2004.
- 760 Webber, H., Ewert, F., Kimball, B., Siebert, S., White, J. W., Wall, G., Ottman, M. J., Trawally, D., and Gaiser, T.: Simulating canopy temperature for modelling heat stress in cereals, *Environmental Modelling & Software*, 77, 143-155, 2016.
- Weimar, J., Köhli, M., Budach, C., and Schmidt, U.: Large-Scale Boron-Lined Neutron Detection Systems as a ^3He Alternative for Cosmic Ray Neutron Sensing, *Frontiers in Water*, 2, 10.3389/frwa.2020.00016, 2020.
- Western, A. W. and Blöschl, G.: On the spatial scaling of soil moisture, *Journal of hydrology*, 217, 203-224, 1999.
- 765 Zaveri, E. and Lobell, D. B.: The role of irrigation in changing wheat yields and heat sensitivity in India, *Nature Communications*, 10, 4144, 10.1038/s41467-019-12183-9, 2019.
- Zreda, M., Desilets, D., Ferré, T., and Scott, R. L.: Measuring soil moisture content non-invasively at intermediate spatial scale using cosmic-ray neutrons, *Geophysical research letters*, 35, 2008.
- Zreda, M., Shuttleworth, W., Zeng, X., Zweck, C., Desilets, D., Franz, T., and Rosolem, R.: COSMOS: The cosmic-ray soil moisture observing system, *Hydrology and Earth System Sciences*, 16, 4079-4099, 2012.
- 770