

MOLISENS: ~~a modular~~ A MOBILE LIDAR SENSOR SYSTEM TO EXPLOIT THE POTENTIAL OF ~~automotive~~ small industrial lidar devices FOR GEOSCIENTIFIC APPLICATIONS

Thomas Goelles^{2,1*}, Tobias Hammer^{1,2,3*}, Stefan Muckenhuber^{1,2,*}, Birgit Schlager^{2,3,*}, Jakob Abermann¹, Christian Bauer¹, Víctor J. Expósito Jiménez², Wolfgang Schöner¹, Markus Schratte², Benjamin Schrei¹, and Kim Senger⁴

¹University of Graz - Department of Geography and Regional Sciences, Heinrichstraße 36, 8010 Graz, Austria

²Virtual Vehicle Research GmbH, Inffeldgasse 21a, 8010 Graz, Austria

³Graz University of Technology - Institute of Automation and Control, Inffeldgasse 21b, 8010 Graz, Austria

⁴University Centre in Svalbard, P.O. Box 156, 9171 Longyearbyen, Norway

*These authors contributed equally to this work.

Correspondence: thomas.goelles@v2c2.at, hammer.tobias@gmx.de, stefan.muckenhuber@uni-graz.at, birgit.schlager@v2c2.at

Abstract. We propose a newly developed modular MOBILE LIDAR SENSOR SYSTEM (MOLISENS) to enable new applications for automotive light detection and ranging (lidar) sensors independent of a complete vehicle setup. The stand-alone, modular setup supports both monitoring of dynamic processes and mobile mapping applications based on Simultaneous Localization and Mapping (SLAM) algorithms. The main objective of MOLISENS is to exploit newly emerging perception sensor technologies developed for the automotive industry for geoscientific applications. However, MOLISENS can also be used for other application areas, such as 3D mapping of buildings or vehicle independent data collection for sensor performance assessment and sensor modeling. Compared to Terrestrial Laser Scanners (TLSs), automotive lidar sensors provide advantages in terms of size (in the order of 10cm), weight (in the order of 1kg or less), price (typically between 5,000EUR and 10,000EUR), robustness (typical protection class of IP68), frame rates (typically 10Hz-20Hz), and eye safety ~~of~~-class (typically 1). For these reasons, automotive lidar systems can provide a very useful complement to currently used TLS systems that have their strengths in range and accuracy performance. The MOLISENS hardware setup consists of a sensor unit, a data logger, and a battery pack to support stand-alone and mobile applications. The sensor unit includes the automotive lidar Ouster OS1-64 Gen1, a ublox multi-band active Global Navigation Satellite System (GNSS) with the possibility for Real-Time Kinematic (RTK), and a 9-axis Xsens Inertial Measurement Unit (IMU). Special emphasis was put on the robustness of the individual components of MOLISENS to support operations in rough field and adverse weather conditions. The sensor unit has a standard ~~screw~~-tripod thread for easy mounting on various platforms. The current setup of MOLISENS has a horizontal field of view of 360°, a vertical field of view with 45° opening angle, a range of 120m, a spatial resolution of a few cm, and a temporal resolution of 10Hz-20Hz. To evaluate the performance of MOLISENS, we present a comparison between the integrated automotive lidar Ouster OS1-64 and the state of the art, high accuracy and high precision TLS RIEGL VZ-6000. The mobile mapping appli-

20 cation of MOLISENS has been tested under various conditions and results are shown from two surveys in the Lurgrotte cave system in Austria and a glacier cave in Longyearbreen on Svalbard.

1 Introduction

Developing new, reliable measurement and monitoring techniques requires emerging cutting-edge technology. This paper introduces a stand-alone, modular MOBILE LIDAR SENSOR SYSTEM (MOLISENS) that ~~allows to build~~ builds on recent lidar, radar, and camera innovations, ~~originally from the automotive industry. Originally, these sensors were~~ developed for high-resolution environment perception of automated vehicles ~~to enable new measurement and monitoring methods for geoscientific applications. MOLISENS includes a Differential Global Navigation Satellite System (DGNSS). MOLISENS currently includes a lidar, a DGNSS, and an Inertial Measurement Unit (IMU) for georeferenced positioning and orientation. The modular setup permits the use of automotive lidar, design permits also the use~~ radar and camera sensors (including traffic monitoring sensors). ~~Furthermore, the setup works~~ without the necessity of a complete vehicle setup. This shall allow measuring geoscientific processes reliably, at any remote location, with very high spatial and temporal resolution, and at relatively low costs.

~~Non-automotive Terrestrial Laser Scanner (TLS) units have been used in many geoscientific applications such as spectral and structural geology, seismology, natural hazards, geomorphology, and glaciology as listed in the review Telling et al. (2017). Data products based on TLS are widely used and range from controlled outdoor studies (e.g., Rapstine et al., 2020; Rengers et al., 2021; Pro~~ to natural observations (e.g., Rengers et al., 2021) and damage assessments (e.g., Olsen and Kayen). Typically, multi-temporal lidar studies deal with repeated measurements over years (e.g., O'Neal and Pizzuto, 2011; Neugirg et al., 2016) or months (e.g., Rabatel et al., 2008; Rengers and Tucker, 2015) in order to investigate deforming surfaces. Recently, permanently mounted TLS have been used to monitor rockfall at intervals of an hour (Williams et al., 2018, 2019) or to monitor a high mountain environment at daily or hourly intervals (Voordendag et al., 2021). Rengers et al. (2021) recorded a mass flow with speeds greater than $1m s^{-1}$ for the first time. They used a modified VZ-400 TLS at a narrow field of view of $44^{\circ} \times 0.13^{\circ}$, which allowed a sampling rate of 60Hz.

~~Structure from motion (SfM) especially from Unmanned Aerial Vehicle (UAV), is another tool to derive 3-dimensional (3D) point clouds for geoscientific applications. For example, Lague (2020) compared SfM to TLS for fluvial geomorphology and Wilkinson et al. (2016) for digital outcrop acquisition. Its main advantages are low-cost, uniform point density, high resolution RGB information with the limitations of no penetration through vegetation, requirement of good Global Navigation Satellite System (GNSS) signal, and UAV flight regulations. In addition, SfM is problematic for surfaces with homogenous textures like snow and is limited to well-lit environments. In caves SfM has been used with digital close-range photogrammetry by a digital single-lens reflex camera mounted on a tripod in the study of Pukanská et al. (2020), where they also compared it to TLS data. Their conclusion was that both methods have their specific requirements, advantages, and disadvantages. Therefore, they recommended a combination of both methods for mapping complex cave spaces.~~

The goal of MOLISENS is to provide an additional tool to SfM and TLS with a unique set of requirements and advantages. It should be cheaper than TLS, with a high sampling frequency and be independent of natural or artificial light, while being

55 small and light enough to carry into tight spaces like caves. It needs to be suitable for static applications on a tripod as well as for mobile mapping. Furthermore, the mobile mapping approach should reduce the shadow effects from static TLS uses, all while keeping accuracy and precision high.

Today, the automotive industry is a leading technology driver for lidar, radar, and camera sensors, because the largest challenge for achieving the next level of vehicle automation is to improve the reliability of the vehicle's perception system (Watzenig and Horn, 2017). ~~Both, lidar, radar, and camera play essential roles in the perception system of automated vehicles (Marti et al., 2019). The presented work will focus on lidar sensors. However, since MOLISENS is designed as modular system, integration of radar and camera is possible with little effort.~~

Automotive lidar sensors record high-resolution point clouds with ~~very~~ high acquisition frequencies (around 10Hz-20Hz frame rate) to support applications in fast moving environment such as freeways. High costs of mechanically spinning lidars (currently around 5,000EUR to 10,000EUR) are still a limiting factor for many applications, but prices for automotive lidar have already dropped significantly during the last decade and are expected to drop by another order of magnitude in the upcoming years caused by newly emerging technologies like micro-electro-mechanical systems (MEMS) based mirrors, optical phased array, single-photon avalanche diode (SPAD) detectors, and vertical-cavity surface-emitting laser (VCSEL) sources (Hecht, 2018; Druml et al., 2018; Thakur, 2016). ~~One example is the Ouster ES2 (Ouster Inc., 2022), which includes a SPAD detector and VCSEL source. The Ouster ES2 is expected in late 2022 and shall have a range of at a cost of around~~ Examples for state-of-the-art automotive lidar types are Ouster OS0 (Ouster Inc., 2021a), Ouster OS1 (Ouster Inc., 2021b), 70 Ouster OS2 (Ouster Inc., 2021c), Velodyne Alpha Prime (Velodyne Lidar Inc., 2021), and Ibeo Lux 4L/8L/HD (Ibeo Automotive Systems GmbH, 2021). In addition to range information, several new lidar types, e.g., Ouster OS (Ouster Inc., 2021a, b, c), provide intensity information for each received point, which allows to take also the reflectance of the illuminated materials for new applications into account. Most state-of-the-art automotive lidars provide a single return or dual returns, while some have up to five returns (Ocular Robotics Limited, 2018) and one which offers full-waveform information (LeddarTech Inc., 2021). 75 Therefore, this limits the application of automotive lidar where multiple returns are needed, as for example for vegetation removal.

Due to the above listed advantages, automotive lidar sensors can complement, non-automotive TLS systems that are nowadays used for geoscientific applications. Examples for state-of-the-art TLS used in geosciences are Leica P30/P40 (Leica Geosystems AG, 2021a), Leica P50 (Leica Geosystems AG, 2021b), or the Riegl VZ-Series (Riegl Laser Measurement Systems GmbH, 2020). High-end TLS typically provide very detailed and highly accurate point clouds but are more expensive (order of 100,000EUR), heavier (order of 5kg to 10kg), less robust (typically IP64), and in certain field scenarios more difficult to handle than small and light-weight automotive lidar sensors.

~~To estimate the quality of automotive lidar point clouds, a RIEGL VZ-6000 3D ultra-long range TLS (Riegl Laser Measurement Systems) was used for ground-truth acquisition. A test setup was designed to compare the accuracy of the VZ-6000 to automotive lidar sensors (Hammer, 2021). The MOLISENS system made it possible to record data with an automotive lidar independent of the vehicle platform.~~

To support mobile mapping applications, MOLISENS includes a DGNSS and an IMU for georeferenced positioning and orientation. For registration of subsequently recorded point clouds into a cumulative point cloud, i.e., for creating a 3D map, the Simultaneous Localization and Mapping (SLAM) algorithm (Bălașa et al., 2021; Zhang and Singh, 2017) LIO-SAM (Shan et al., 2020) is used. Lidar based mobile mapping systems have already been tested in various disciplines such as indoor mapping applications (Tucci et al., 2018), urban mapping applications (Moosmann and Stiller, 2011; Zhang and Singh, 2017; Behley and Stachniss, 2018), and for geoscientific surveys (Bosse et al., 2012; Kukko et al., 2012; Wang et al., 2013). A major advantage of MOLISENS compared to previous systems is the modular setup focused on automotive sensors, that allows to easily exchange and update existing components and extend the system with additional automotive sensors, such as radar and camera.

Apart from newly emerging perception sensor technology, MOLISENS also benefit from recent developments in the GNSS sector. Typically, DGNSS technology for positioning requires extensive additional gear that must be transported into the field, i.e., rover and base station. New GNSS platforms integrate multi-band GNSS and Real-Time Kinematic (RTK) technology to yield accuracies in the order of centimeters with a single device and internet connection. Such GNSS platforms are designed primarily for industrial tracking and wearable applications so they are optimized in size, weight, update rate, and power consumption (Janos and Przemysław, 2021).

~~The~~ To estimate the quality of automotive lidar point clouds, a RIEGL VZ-6000 3D high accuracy and precision TLS (Riegl Laser Measurement Systems GmbH, 2020) was used for ground-truth acquisition. A test setup was designed to compare the accuracy of the VZ-6000 to automotive lidar sensors (Hammer, 2021). In addition, the MOLISENS system has been tested under various conditions and results are shown from two mapping surveys in the Lurgrotte cave system in Austria and a glacier cave in Longyearbreen on Svalbard.

Other potential use cases in physical geography are

- underground measurements: cave/mine mapping,
- monitoring glacier caves, calving glaciers,
- 110 - monitoring of snow and avalanches,
- monitoring of mass movements,
- monitoring of fluvial systems,
- monitoring of erosion and deposition processes,
- sea ice detection and mapping,
- 115 - coastal mapping,
- archaeology, historical and cultural preservation, and
- forestry surveys.

Potential use cases in urban environments are

- highways surveys,
- roadside inventory projects,
- power line corridor surveys,
- 3D City modeling, and
- 3D indoor modeling.

120

This article is organized as follows: Section 2 gives an overview on the hard- and software components of MOLISENS. In Section 3, the integrated automotive lidar OS1-64 is described and compared to the state-of-the-art TLS VZ-6000. In Section 4, the point cloud processing package *pointcloudset* and the used mapping algorithm are described. The results of two mapping campaigns are shown in Section 5. The discussion of the measurement campaigns and an outlook on future applications are given in Section 6. The conclusion is presented in Section 7.

125

2 MOLISENS setup

MOLISENS provides a stand-alone, modular framework which is capable of integrating various automotive lidar, radar, and camera sensors, that support Robot Operating System (ROS) functionality, with low adjustment effort. The hardware setup follows International Protection (IP) standards of automotive sensors, e.g., the OS1-64 has an IP class of 69K with the cable attached (Ouster Inc., 2020b), which makes it suitable for fieldwork in rough environments. Figure 1 depicts the hardware components of MOLISENS. The data logger and the sensor unit are connected via a self-developed wire harness which avoids the need of multiple cables. The setup can either be powered by batteries or by a Alternating Current (AC)/Direct Current (DC) mains adapter. The environment is scanned by the sensor unit and the transmitted sensor data are recorded by the data logger. The data can be downloaded via a Local Area Network (LAN) interface for further post-processing on a computer. ~~The weight of the whole setup, i.e., sensor unit, data logger, battery pack, and wire harness, is for mobile measurements (Table ??), which require external batteries. Table ?? shows also the dimensions of the modules of MOLISENS.~~

135

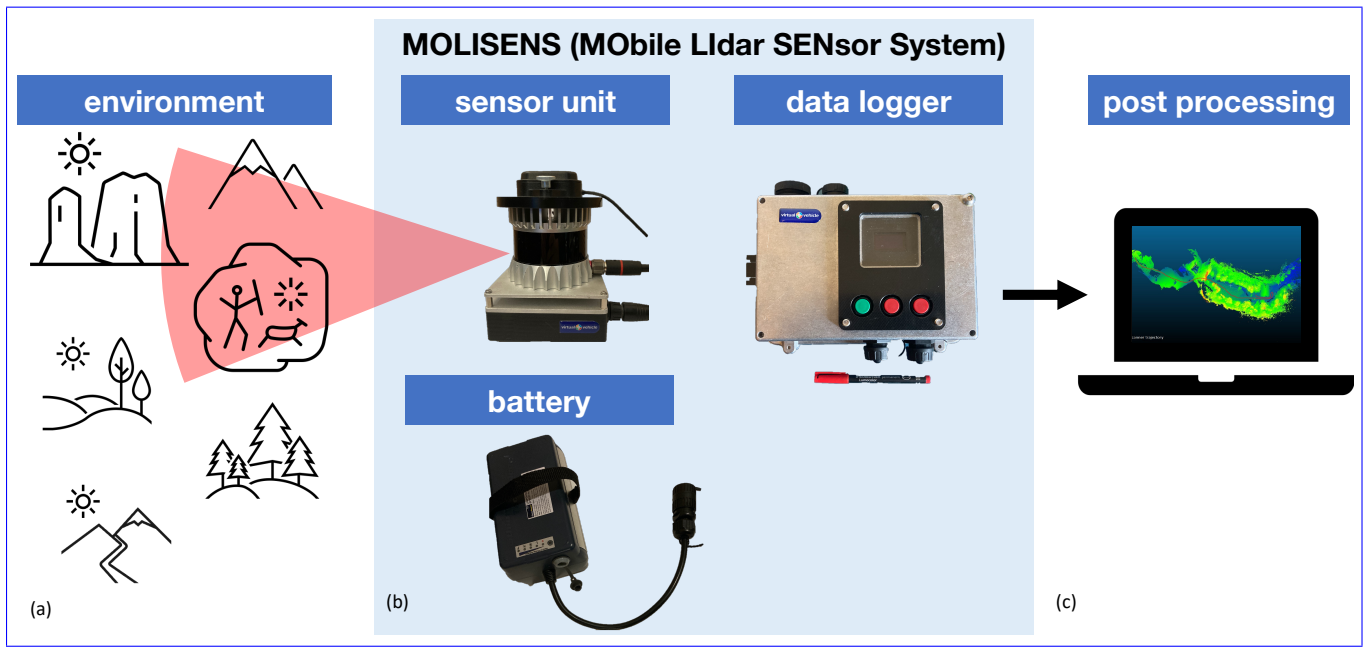


Figure 1. Hardware-MOLISENS concept with hardware components and interfaces of MOLISENS(b) with a pen for scale. The data logger is $21.5 \times 16 \times 14$ cm and weighs 2.1kg. The sensor unit weighs 1.0kg and the total weight of the complete system is 5.5kg

140 **Weight and dimensions of hardware setup. unit weight in dimensions in** data logger 21.5-16-14 sensor unit 10.5-10.5-15
 wire harness between data logger and sensor unit 200 Lithium-Ion (Li-ion) battery 16.7-10.0-7.9 **total weight**

2.1 Sensor unit

The sensor unit consists of the OS1-64 Gen1 which is an automotive rotating lidar sensor, a ublox active multi-band GNSS antenna of the ANN-MB series, and the 9-axis Xsens MTi 630 IMU. Between the OS1-64 and the IMU is a space that heat
 145 produced by the OS1-64 can be dissipated. The sensor unit has a Θ -1/4 inch thread, which is a standard camera thread, mountable on handles, tripods, or other standardized setups.

2.2 Data logger

2.2.1 Hardware

The data logger consists of two DC/DC converters, one 24V/24V converter and one 24V/5V converter for internal power supply, a RaspberryPi 4 as processing unit, a RaspberryPi hat-**Hardware Attached on Top (HAT)** for the real-time clock, a RaspberryPi hat-**HAT** with a 1TB Solid State Drive (SSD) for data storage, a RaspberryPi hat-**for Global Positioning System (GPS)-HAT for GNSS** data, a Long Term Evolution (LTE) stick to retrieve RTK data and the Ouster interface board that is responsible
 150 for powering the OS1-64 and for data transmission. Interfaces provided by the data logger are a connector for power supply

of the whole setup, a 24-pin connector for Ouster data and power supply, the IMU Universal Serial Bus (USB) interface, a
155 Sub-Miniature A (SMA) connector for the [GPS-GNSS](#) antenna, a Registered Jack 45 (RJ45) connector for Ethernet, and a
USB connector. Furthermore, the data logger's [-interface](#) includes one on/off button, two red buttons for selecting the measurement
programme, one green button for start and stop measurements, and an Organic Light Emitting Diode (OLED) display,
which shows the measurement programs, the state of the LTE connection, and the filename of the current measurement. The
aluminum housing of the data logger includes an aluminum plate to the integrated circuits on the RaspberryPi which allows
160 ~~for~~ appropriate cooling of the hardware. The OLED display can be seen through a transparent plastic window in the aluminum
housing.

2.2.2 Software

The software stack of the data logger is shown in Figure 2. Although the official operating system for RaspberryPi is Raspbian
(<https://www.raspbian.org/>), Ubuntu Server 20.04 Long Term Support (LTS) (<https://ubuntu.com/download/raspberry-pi>) was
165 installed as operating system for MOLISENS, since the integration with ROS (<https://www.ros.org>) works best on Ubuntu. ROS
is an open-source middleware widely used for robotic applications. A major advantage of ROS is the extensive list of open-
source third-party packages and tools for different domains, e.g., Autoware (<https://www.autoware.org/>) for the automotive
domain.

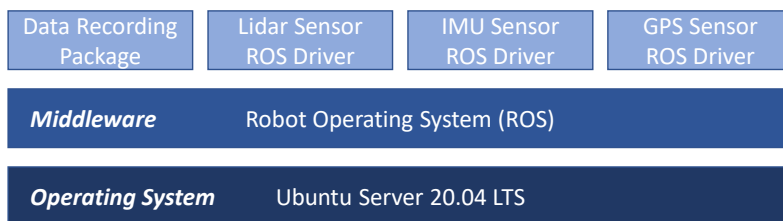


Figure 2. Software stack of the data logger.

In ROS, a master called roscore controls and registers all nodes running in the system. Each node, which can be defined
170 as an entity that performs a task, can exchange data with other nodes by publishing or subscribing messages through topics.
Topics are communication channels, which are defined by a unique name and a specified type of message that is transported.
ROS officially supports C++, Python, and Lisp but other programming languages are also possible through unofficial channels.
The specific software packages used in MOLISENS are:

- Data recording package: We developed a ROS package in Python that provides an easy interface to start and stop the
175 data recording as well as a flexible configuration for the specific requirements of the use case. Both, the sampling rate
of either 10Hz or 20Hz of the OS1-64 and the number of points in horizontal direction of either 1,024 or 2,048, can be
selected by the user just before the measurements by using the red and green buttons on the data logger. The IMU data

are recorded with 200Hz and the [GPS-GNSS](#) data with 1Hz. The ROS package records all messages from the specified topics and creates a time synchronous [rosbag-ROS bag](#) file including the data from all sensors. Later, this [rosbag-ROS bag](#) file can be used as input to a SLAM algorithm to generate a 3D map of the measurement area.

180

– Lidar sensor package: The ROS package provided by the sensor manufacturing company was implemented (Ouster Inc., 2020a). It provides transforming the raw data from the sensor into point cloud messages and also includes visualization tools to proof that the lidar sensor is correctly mapping the scenario and to check the light intensity of the points. Due to the computational limitations of the RaspberryPi, only raw data are recorded. The recorded raw data are converted into point cloud messages in a post-processing step.

185

– IMU sensor package: Similar to the lidar sensor, the ROS driver provided by the manufacturer is used (Xsens, 2021). Only the configuration and topic selection was adopted to meet the requirements of our use case. Most of the topics were omitted to increase the performance of the system.

190

– [GPS-GNSS](#) sensor package: Another self-developed Python package was used to retrieve the National Marine Electronics Association (NMEA) messages from the ublox [GPS-GNSS](#) module. This driver is also able to receive correction data from Radio Technical Commission for Maritime (RTCM) messages through the integrated Networked Transport of RTCM via Internet Protocol (NTRIP) client. By using this NTRIP client, correction data from the external services are included into the [GPS-GNSS](#) module to improve the accuracy of the measurements. The usage of this correction data is called [GPS-GNSS](#) RTK. The precision is below 2.5cm with fixed RTK when the signal from the satellites is clear and also the base station from the correction data service is not far away, i.e., less than 10km, from the [GPS-GNSS](#) module (Dunning, 2018). When the situation is not optimal, the module is still able to reach a precision between 10cm and 45cm with RTK float (Dunning, 2018).

195

2.3 Power supply

MOLISENS can be powered either with batteries (e.g., Lithium Iron Phosphate (LiFePO₄), Li-ion) or with an AC/DC mains adapter that provides a nominal voltage of 24V. The battery supply supports mobile measurements whereas the mains adapter may be used when recorded data are transferred to the post-processing computer. The described setup including the data logger and the sensor unit draws a current of about 1A when data of all three sensors are recorded. We used either a Li-ion-battery with 10.4Ah for 10.4h of measuring or two parallel LiFePO₄-batteries with 3.6Ah each, so 7.2Ah in total, for 7.2h of measuring. The operating temperature for discharging is limited between -20°C ~~to~~ [and](#) $+60^{\circ}\text{C}$ for both types of batteries. We used batteries from AccuPower (AccuPower Research, Development and Distribution Company (Ltd.), 2022).

205

3 MOLISENS with automotive lidar OS1-64 Gen1

3.1 OS1-64 Gen1 specifications

The Ouster OS1-64 is a mechanical spinning lidar scanner that costs about 10,000EUR. The ingress protection level is IP69K with Input/Output (I/O) cable attached, so it offers complete protection against contact, i.e., it is dust-tight and waterproof. It is classified as a mid-range lidar sensor and can detect objects up to a distance of 150m. The minimum range is 0.8m. The laser operates with eye safety class 1 per IEC 60825-1:2014, which makes it possible to operate the lidar without any restrictions regarding the eye safety of the operator or other persons within the measurement range. The wavelength of the laser is 855nm. The range resolution is 0.3cm, so it is able to detect individual objects when the distance between those objects in scanning direction is 0.3cm or greater. The range accuracy is stated with +/-5cm for Lambertian targets and +/-10cm for retroreflectors (Ouster Inc., 2020b). The precision depends on the range and is between +1cm and +5cm. The vertical resolution of the OS1-64 is given by the 64 channels which are evenly distributed within the 33.2° vertical field of view. The horizontal resolution is configurable and can be 512, 1,024, or 2,048 scanning points in horizontal direction for the 360° field of view. The angular sampling accuracy vertically and horizontally is +/-0.01°. The sampling frequency can be configured with 10Hz or 20Hz. At 10Hz, the scanner rotates and scans 10 times per second and produces up to 64 · 2,048 points per rotation. Therefore, the OS1-64 is able to detect over 1.3 million points per second at 10Hz rotation rate.

A computer with ROS installed can read and record the data which are forwarded by the Ouster interface box. In our case, the necessary components are integrated in MOLISENS. We decided to record only raw lidar data to be able to store [more data at](#) about 1.3 million points per second, IMU measurements with 200Hz, and [GPS-GNSS](#) measurements with 1Hz. The raw lidar data do not comprise the actual 3D-points with x-, y-, and z-coordinates, but information such as timestamp, measurement id, and range for each measurement. These data is used in a post-processing step for the derivation of 3D-points. Recording the raw data instead of the point cloud data reduces the total data rate, i.e., lidar, IMU, and [GPS-GNSS](#) data, from 77MB/s to 15.14MB/s, a factor of more than 5. Up to 18h of recording are possible with 1TB of data storage that we use in MOLISENS.

3.2 OS1-64 performance assessment

We assessed the performance of the OS1-64 against the VZ-6000 in a standardized test setup which is based on Boehler et al. (2003). The first frame of each OS1-64 measurement was used for the test. Specifically, the following attributes were analyzed: systematic and surface-induced range errors and angular errors.

We tested the systematic noise in the range measurements of the lidar. For that purpose, a plane target was scanned. We ~~took used~~ a wall perpendicular to the observation direction as the plane target. The wall was modeled as a plane. ~~Therefore,~~ [and](#) the normal distance between every point in the point cloud and this plane can be calculated. The standard deviation of the distribution of these normal distances, which represent the range errors, was derived (Figure 3). We investigated two different materials: retroreflective foil and a cardboard with black dull spray paint. Those surfaces need to be in the same plane perpendicular to the observation direction to quantify the deviations of surfaces with high and low reflectivity. This was realized by attaching the materials to a wooden board which was mounted on the wall. We analyzed the reflectance of the materials

based on the comparison to Lambertian targets. From a perpendicular angle the reflectivity of the retroreflector was 200% relative to a 100% Lambertian target. The black dull spray paint had a reflectivity of 10% relative to a 100% Lambertian target. ~~These reflectance values represent the ratio of the measured reflectance to the reflectance of a standard Lambertian material~~ (Muckenhuber et al., 2020, Birkebak et al., 2018). The scanned wall in the background was used to model a reference plane. The normal distances between points and reference plane can be calculated by subtracting the thickness of the wooden board and the target thickness. A ~~reflectance threshold~~ threshold in the reflectance value was used to select the points representing the target in the pointcloud.

We used scanned circles to determine the vertical and horizontal distances for quantifying the angular accuracy. We attached four circles, representing a rectangle, with dimensions of 4.5m · 2m, to a wall. This rectangle was scanned from three different positions which yields six independent vertical and six independent horizontal distances.

The results of the tests on systematic range errors showed that the OS1-64 has a higher standard deviation in the range error distribution compared to a TLS such as the VZ-6000 (Figure 3 (a)). The most significant range errors of up to 25cm occurred when scanning retroreflective targets with the OS1-64 (Figure 3 ~~d~~(d)). Furthermore, the range errors in this case are not only larger but are also spread out over a large range of values with a standard deviation of 6.9cm. According to the manufacturer, the errors occurring with retroreflectors result from the time walk error. This error is caused by clock errors and is an internal error source of lidar systems. This means that the light returns so strongly that it deforms the shape of the received signal which leads to an error in the estimation of the peak, i.e., the distance measured (Nahler et al., 2020).

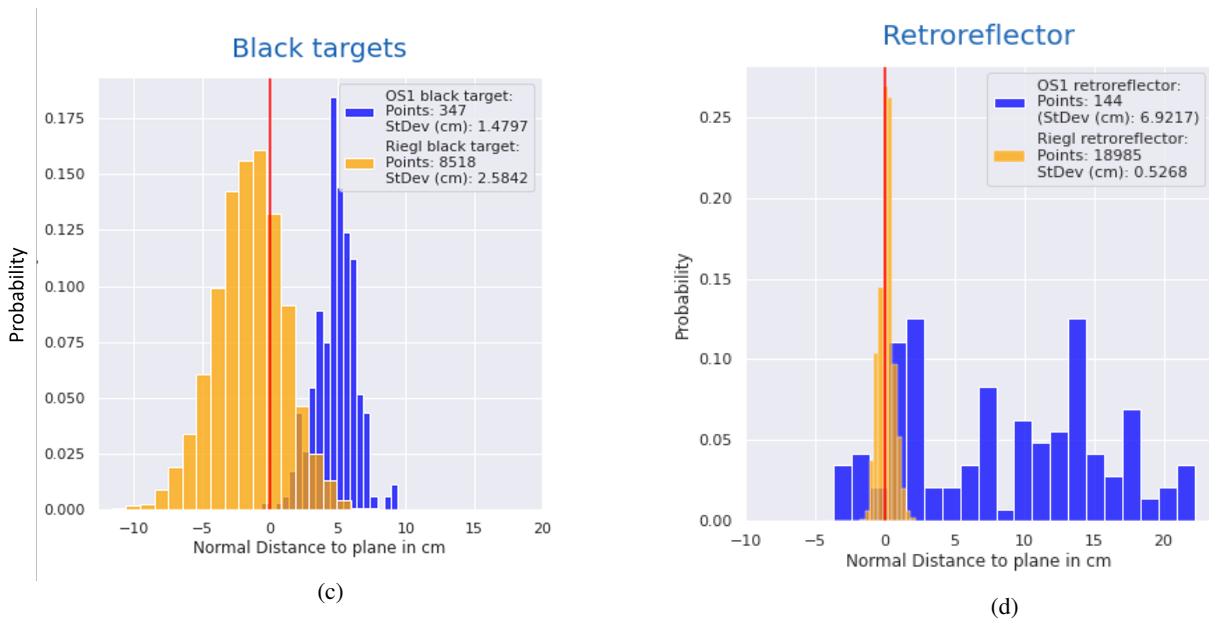
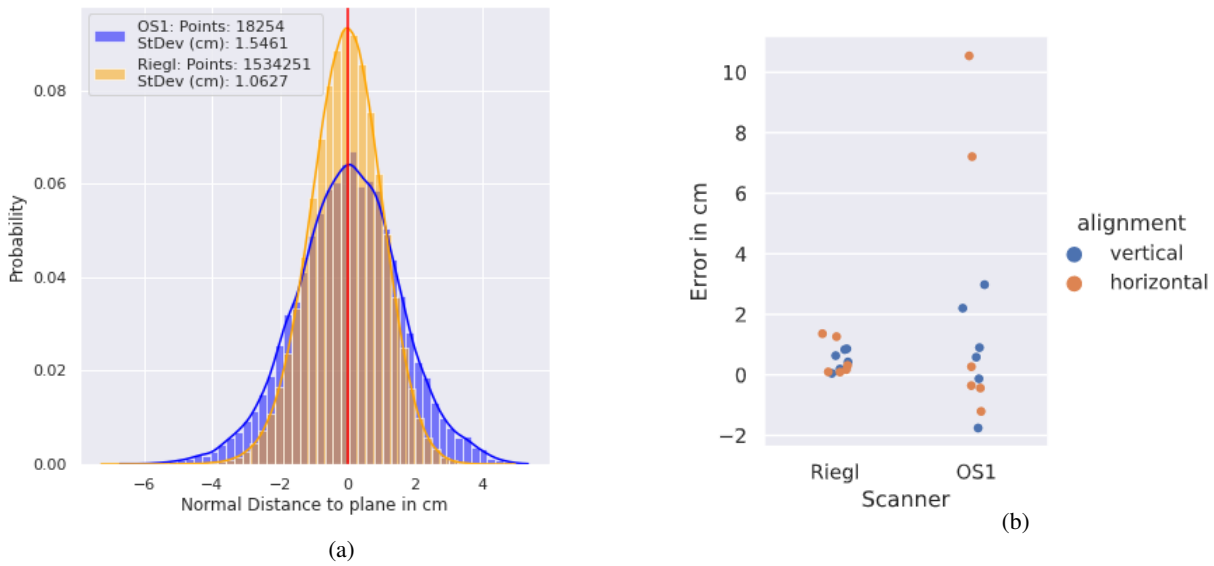


Figure 3. Results of the accuracy assessment of the OS1-64 compared to the VZ-6000 which was used as the reference lidar: (a) range error for a white wall, i.e., normal distances between measurements and ideal plane of the wall, (b) angular error, (c) range errors for black target with low reflectivity, i.e., normal distances between measurements and ideal plane of black target, (d) range errors for retroreflectors, i.e., normal distances between measurements and ideal plane of retroreflector.

Figure 4 shows parts of point clouds with observed artifacts. Areas without data appear near highly reflecting objects (Figure 4 (a) and (b)). The results also show that the OS1-64 performed better at detecting low reflectance targets in close proximity

than the VZ-6000 (Figure 4 (c) and (d)). ~~We found that the VZ-6000 shows larger errors when scans are conducted in indoor environments and at low ranges between and~~

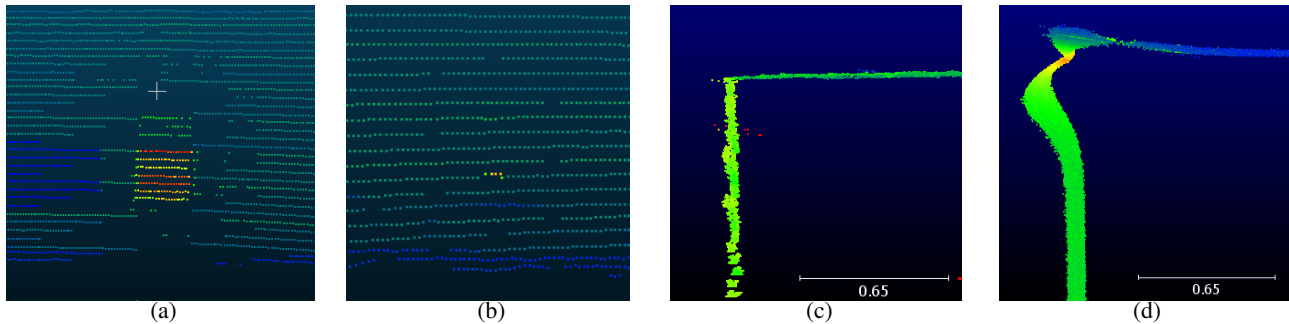


Figure 4. Artifacts observed in the accuracy tests: (a) and (b) areas without data resulting from blooming filter in the OS1-64 data, (c) a part of the OS1-64 point cloud with a corner of the room, (d) a part of the VZ-6000 point cloud with a corner of the room.

260 The found performance issues comprise the following artifacts: range errors at highly reflective targets for the OS1-64, areas without data around highly reflective targets for the OS1-64, corner artifacts for the VZ-6000, and multipath artifacts for the VZ-6000. The systematic range errors, which can be considered as noise, can have great impact on mapping micro-scale features. According to the manufacturer, the effect of areas without data is caused by an integrated blooming filter in the OS1-64. This filter removes bloomed, i.e., overly saturated, points. The range errors of the OS1-64 have a big impact on
265 current point cloud georeferencing methods where retroreflectors of known position are used as distinguishable objects in a point cloud. Other georeferencing methods, like the matching with georeferenced point clouds, must be considered.

4 Data processing for lidar applications

4.1 Data processing of point cloud time series

Automotive lidar sensors record point clouds in the order of a million points per second at acquisition rates ranging from 10Hz
270 to 20Hz. In addition to the x -, y -, and z - coordinates, also ~~other parameters such as range,~~ intensity, reflectivity, ~~noise, etc.~~ ~~are stored~~ ambient near infrared, azimuth angle, and time stamp for each point are stored (Ouster Inc., 2020b). This leads to datasets in the order of gigabytes in the form of 3D point clouds recorded over time. Most software deals with single point clouds and the tools provided by ROS are not designed for post-processing and data analytics. Therefore, a Python package called *pointcloudset* (Goelles et al., 2021) was developed along the sensor hardware. The package is available on the Python
275 Package Index (PyPI) for easy installation with pip. This package organizes the data in the following way: The point cloud data stored in a ROS bag-file (.bag) is read into a *pointcloudset Dataset*. This *Dataset* object consists of multiple *PointCloud* objects, timestamps, and metadata.

The package is optimized for analytics on the whole dataset to answer questions like: "At which point and when was the highest returned intensity of the whole dataset?" or "How many clusters of points in a 0.5m radius exist between 5 and ~~10~~ 10m in

280 x direction in the 124s frame?". Several queries like this can be chained together to form complex pipelines. The computation is only executed at the very last step when the answer is required by so called "lazy evaluation". The computation is performed on multiple Central Processing Units (CPUs) in parallel. The package is not limited to ~~build-in~~built-in functions and additional arbitrary functions can be implemented and applied. Furthermore, the package provides tools for visualization, import and export of widely used point cloud formats. Also a direct interface to the powerful open3D and pandas libraries (Zhou et al., 285 2018; The pandas development team, 2020) is implemented for additional applications. For more details see the documentation on <https://virtual-vehicle.github.io/pointcloudset/>.

4.2 SLAM algorithm

In robotics, SLAM algorithms are a fundamental prerequisite for feedback control, obstacle avoidance, and planning since SLAM allows a robot's six Degrees Of Freedom (DOF) state estimation (Bălașa et al., 2021). Here, we use a SLAM algorithm 290 to generate one cumulative point cloud from a time-series of point clouds. MOLISENS is either mounted on a moving platform or carried along by a person while recording data. The data recording unit uses ROS as middleware and all data is recorded in a ~~rosvag~~ROS bag file, which includes IMU, lidar, and GNSS data. Each recorded data type in the ~~rosvag~~ROS bag file has a timestamp. The recorded data is the input for the mapping algorithm LIO-SAM (Shan et al., 2020), which is applied offline in a post-processing step.

295 LIO-SAM uses the lidar odometry data to estimate the six DOF trajectory of the mapping sensor. The state estimation problem is solved by a factor graph. This incorporates IMU-pre-integration, lidar odometry, GNSS data, and loop closure. The system does not depend on continuous GNSS data. Therefore, the GNSS factor is only added when the estimated position covariance is larger than the received GNSS position covariance. The loop closure factor is responsible for detecting whether a new node has a small Euclidean distance to a prior state. If this is detected, the algorithm tries to match the new state to the 300 near, past state. This is especially useful to correct for potential ~~drifts~~drift in altitude when GNSS is the only absolute sensor available. These advantages compared to methods such as Lidar Odometry and Mapping (LOAM) (Zhang and Singh, 2017) and other previous state of the art algorithms made it well suited for our use cases.

5 Applications in geoscience

To test the MOLISENS setup in challenging field conditions, two mapping surveys in the Lurgrotte cave system in Austria and 305 in a glacier cave in Longyearbreen on Svalbard have been conducted. The following Section presents the results of these two measurement campaigns.

5.1 Application in speleology

The Lurgrotte, a partially water-bearing cave 15km north of Graz in Styria, Austria, was chosen as a study area for MOLISENS. The approximately 6km long cave passes through the Tanneben massif between the localities of Semriach and Peggau. Parts 310 of the cave are accessible to tourists. The cave is characterized by an abundance of speleothems, water-bearing passages, and a

heterogeneous cave geometry in which narrow passages alternate with large chambers, such as the Great Dome. With an area of approximately 5,100m², the Great Dome is one of the ten largest cave chambers in Austria (Plan and Oberender, 2016). Due to these heterogeneous characteristics, the Lurgrotte Semriach is well suited for testing the application of MOLISENS in speleology.

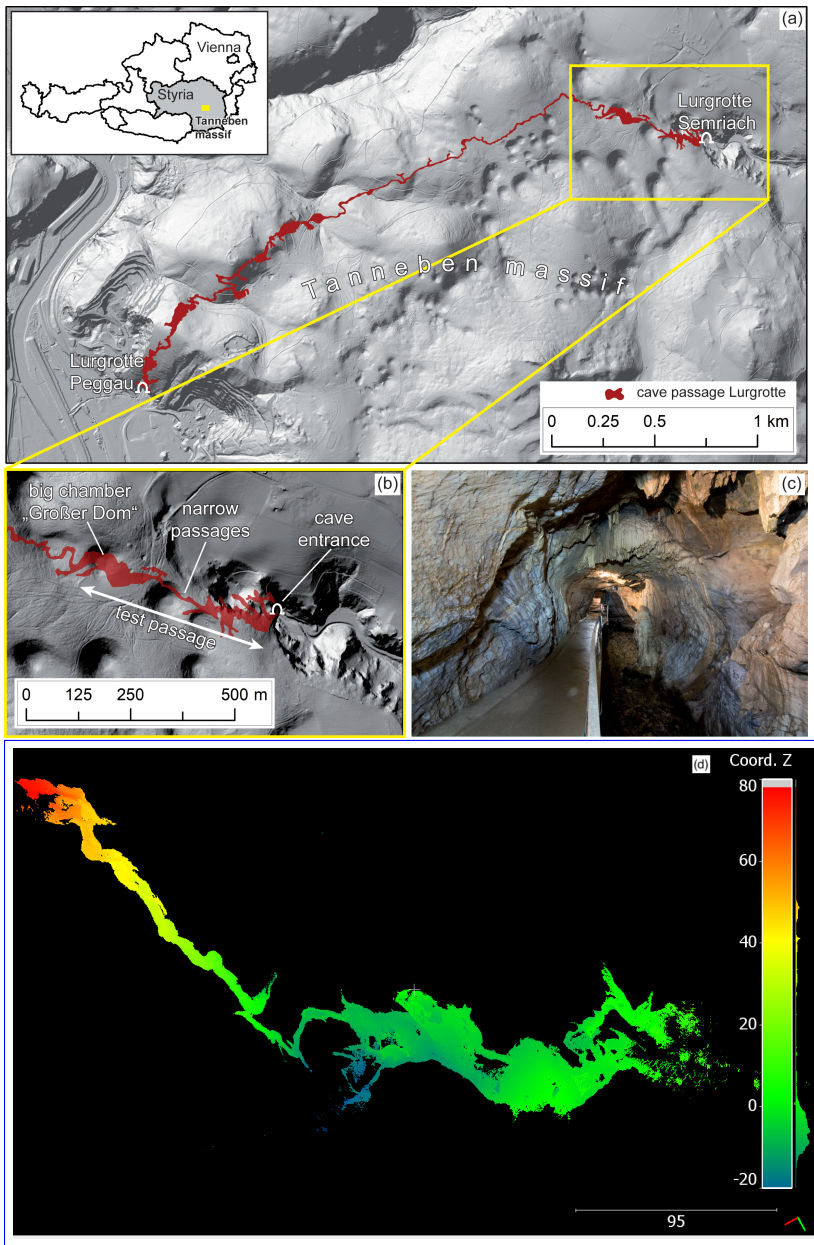


Figure 5. Study area Lurgrotte Semriach. (a) Hillshade visualization (1m · 1m raster resolution) and cave map (b) detailed view of the test passage in which the OS1-64 surveys were carried out including the Great Dome (Großer Dom) (c) a narrow passage with paved footpath within the cave segment open for visitors (image by Christian Bauer). Data: cave map: Bock and Dolischka (1953); ALS-data: CC-BY-4.0: Land Steiermark - data.steiermark.gv.at. (d) Measurement (2), starting at cave entrance, turning point right before the Great Dome, and end at cave entrance; point cloud colored by z-coordinate in metres, visualized with CloudCompare.

315 Scanning a cave system, such as the Lurgrotte Semriach, with a TLS would demand ~~several 10s to 100s~~ tens to hundreds
 scan positions, i.e., a significant effort in terms of time and costs. Using MOLISENS, we were able to produce a point cloud
 without the necessity of time consuming scans at individual positions. The mapping campaign demonstrated that MOLISENS
 can provide a cumulative point cloud even without the use of GNSS measurements. Also, the LIO-SAM algorithm was tested
 on whether it is able to co-register point clouds that were recorded partly outdoor and indoor. More than 300m of complex
 320 cave geometry could be scanned with MOLISENS in less than 12 minutes (Figure 5 (d)). Measurement (1) includes the switch
 from an outdoor environment to an indoor environment in a single measurement. Measurement (2) was conducted only inside
 the cave. An overview of the recorded data is given in Table 1.

Table 1. Comparison of measurements conducted in Lurgrotte; 0.1m is the minimum average point spacing that can be produced by LIO-SAM

Parameter	Measurement (1)	Measurement (2)
Duration	6min 37s	11min 58s
IMU messages	158,816	287,525
Lidar packet messages	499,368	912,505
Size of .bag file	6.0GB	10.9GB
Number of points in final point cloud	10,719,001	6,393,490
Average point spacing	0.1m	0.1m

It has to be noted that a final validation of the point cloud data was not possible at this stage. A validation of the data quality
 and accuracy requires a geodetic reference. A marked closed traverse and local reference points were measured from the cave
 325 entrance to the Great Dome after our fieldwork at the Lurgrotte. The drilled mountings of these marks could be used again
 for further tests with our system. A valid assessment of the accuracy of the produced map can then be accomplished with this
 reference.

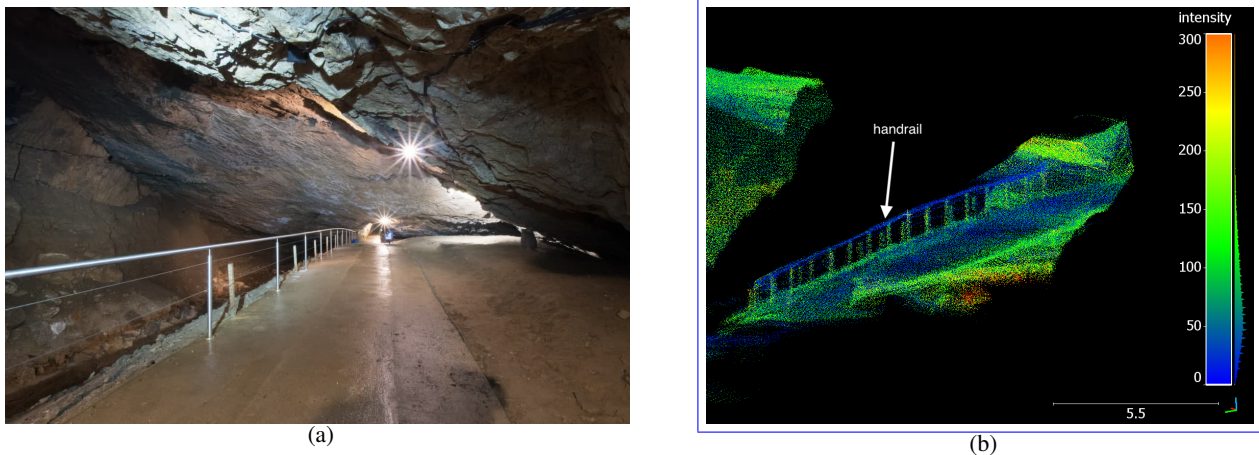


Figure 6. Panel (a) Karst shows karst shapes, artificial concrete, and metal elements-structures in the Lurgrotte cave (image by Christian Bauer). Panel (b) A shows a detailed view on the recorded 3D point cloud image of the depicted cave section, the scanned handrails mark including the walking path through the cave and handrail (visualized in created with CloudCompare).

5.2 Application in glaciology

To test MOLISENS for cryospheric applications, a glacier cave was mapped in the glacier Longyearbreen on the Svalbard archipelago, Norway. The morphological changes of glacier caves give information about the englacial water routing. Ice volume changes in caves are common throughout the year and the inter-seasonal comparison of ice dynamics can indicate a change in the hydro-climatic regime of the glacier (Perşoiu and Lauritzen, 2017). Previous work on cold glacier caves in the study area involved geomorphological mapping and seasonal temperature monitoring (Alexander et al., 2020; Guðmundsdóttir, 2011), but detailed 3D measurements of a glacier cave system are typically not available.

Our aim was to create a 3D point cloud which represent the shape of the glacier cave and the surrounding surface of the glacier. The results are shown in Figure 7. The measurement campaign showed that it is possible to create a cumulative point cloud from the predominant surfaces in and around glacier caves. These surfaces are composed of ice, snow, sediments, and moraine material. Measurements were recorded by walking through the caves bidirectionally with MOLISENS. The recorded data resulting were then processed with the LIO-SAM algorithm to create a cumulative point cloud of the glacier cave and the surrounding surface of the glacier.

Figure 7 (a) represents a segment of the processed point cloud showing the glacier cave and the glacier surface from below. The cross sections shown in Figure 7 (e) and (d) are one meter long segments along the cave direction. Some outlier points are visible that are might be a result of the scanners range errors, multi-path errors created by ice surfaces, and the torso of the person holding the scanner.

In general, the Ouster OS1-64 should perform well for glaciological applications due to the wavelength of 855nm where absorption in ice is lower (Warren and Brandt, 2008) than at the wavelength of the VZ-6000 at 1064nm or other TLS which have a wavelength of typically 1550nm (Deems et al., 2013). Further investigations of the errors are needed in the future.

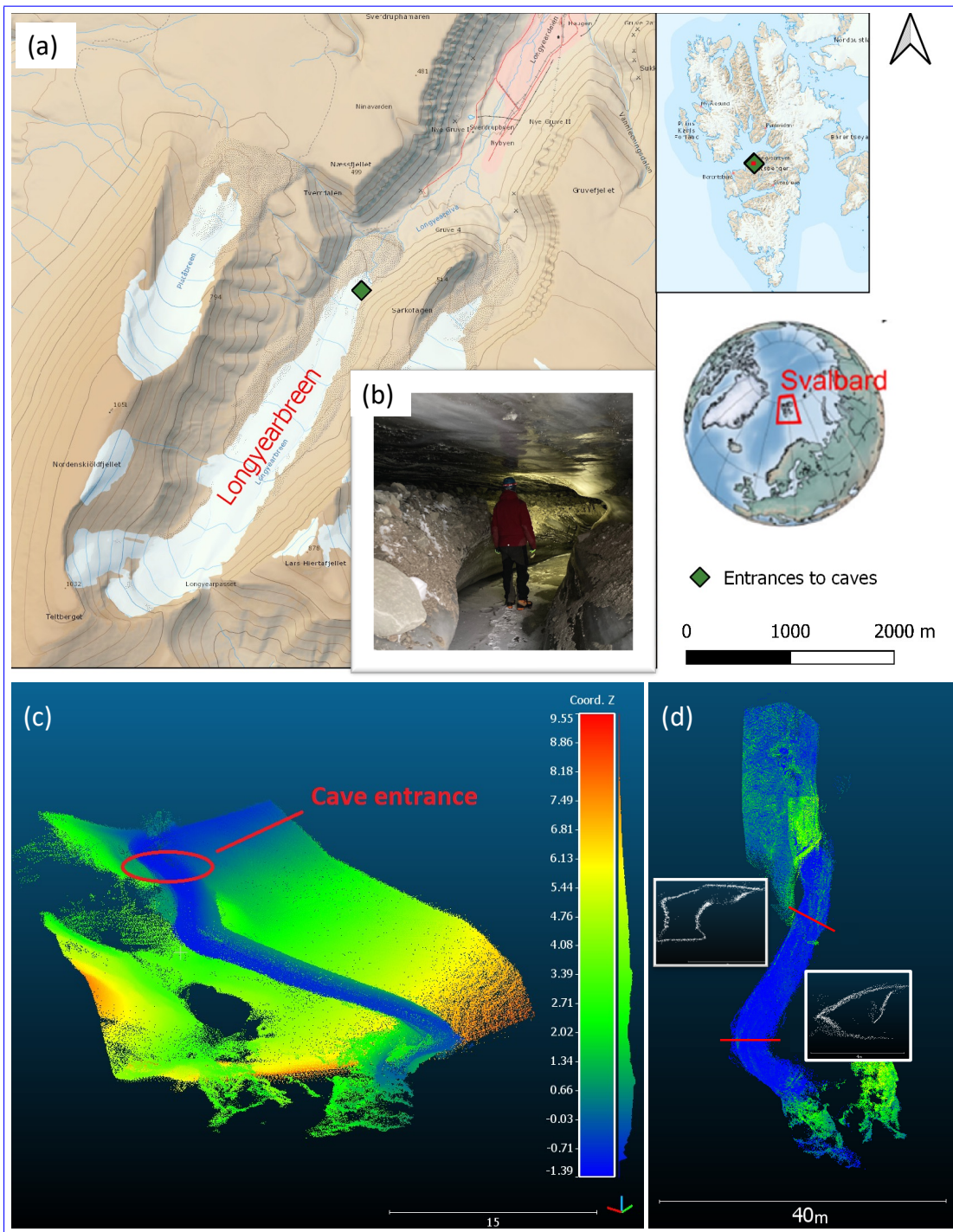


Figure 7. Resulting point cloud visualizations of the glacier cave on Longyearbreen (a). Panel (b) shows and image of the entrance and (c) a view from below the point cloud with the glacier cave and the glacier surface. Panel (d) shows the extracted cave (nadir view) with two cross sections with the same color bar as in (c).

Resulting point cloud visualizations of glacier cave 1 on Longyearbreen (a) shows the segment of the point cloud with the glacier cave and the glacier surface (view from below) (b) shows the extracted cave (nadir view) (c) cross section 1 (d) cross section 2 (e) photo of the entrance of the cave

6 Discussion and outlook

6.1 Automotive lidar as part of MOLISENS

350 Our comparison shows that automotive lidar sensors such as the OS1-64 can offer advantages for certain applications compared to conventional TLS such as the VZ-6000. These ~~are the price, size, advantages are the lower price, smaller size, lower weight,~~ and increased robustness but also the ability to acquire data in narrow spaces ~~-and while moving. We found that the VZ-6000 shows larger errors when scans are conducted in indoor environments and at low ranges between 5 and 15m.~~

The accuracy of the data depends on the target properties. A black target had errors of up to ~~5cm~~5cm, while a retroreflective material up to ~~22cm~~22cm. Nevertheless, for numerous applications the data can be the foundation for many kinds of analysis. We recommend to refrain from analyzing features smaller than ~~10cm~~10cm in the processed point clouds. The given accuracy of up to 5cm for ranges greater than 50m leads to an increase in noise when the SLAM algorithm is used. Applying smoothing filters on the cumulative point cloud is recommended. The frequency and magnitude of the distance error when scanning retroreflective surfaces is expected to be reduced with upcoming firmware version. Although, this must be considered if retro-
360 flective targets are used during geo-referencing. Better yet would be to use non-retroreflective target for geo-referencing, e.g., white paper with black markings. ~~The drifts in the SLAM processed point clouds has yet be quantified and workflows for geo referencing have to be tested~~Another challenging surface is water, which absorbs typical wavelengths of automotive lidar in the near-infrared (e.g., Lague, 2020).

In our fieldwork, MOLISENS has proven to record data in complex environments even without a GNSS signal. Although,
365 the drifts in the SLAM processed point clouds has yet be quantified and workflows for georeferencing have to be tested. With the data from our fieldwork, the mapping algorithm LIO-SAM was able to map the environment and the trajectory of the mapping sensor into a point cloud. This shows that results are possible under the following conditions:

- snow and ice surfaces,
- arctic weather conditions (-20°C),
- 370 – very narrow spaces ($< 1\text{m}$), and/or
- rough sensor handling due to rough terrain or narrow spaces.

The lack of GNSS data for cave measurements caused drifts induced by small propagating errors in the IMU data. These drifts are yet to be quantified.

6.2 Other automotive sensors

375 In addition to lidar, other automotive perception sensors such as radar systems can be integrated into MOLISENS. Modern automotive and traffic monitoring radar sensors typically operate at 24GHz, e.g., Smartmicro TRUGRD Stream (s.m.s, smart microwave sensors GmbH, 2021), or 77GHz (Ramasubramanian and Ramaiah, 2018), e.g., Continental ARS540 (Continental

AG, 2016, 2017), have a range up to 300m, and apply Frequency-Modulated Continuous Wave (FMCW) technologies for relative distance and velocity estimation (Patole et al., 2017) and digital beam-forming to control the direction of the emitted wave (Hasch, 2015). In addition to data on object level (i.e., list of detected traffic participants), radar data is typically also provided as radar clusters. Clusters represent radar detections with information like position, velocity, and signal strength. This raw data format allows to develop and apply new algorithms for detecting changes in the backscatter behavior of the environment caused by various geoscientific processes.

6.3 Potential applications

We envision MOLISENS as ~~an a~~ useful tool in geosciences. The IP level of the OS1-64 allows us to conduct measurements under adverse conditions and rough sensor handling. This opens a wide range of applications ranging from cave mapping, glacier surface analysis to meltwater channel monitoring with the potential to increase our understanding of the drainage systems of glaciers. A 3D model of a glacier cave can be used to parameterize volumetric properties of the cave with the aim of analyzing cave morphology (Gallay et al., 2015; Šupinský et al., 2019). The recorded intensity values for ice surfaces are significantly lower than for surfaces covered with, e.g., moraine material or sediments. ~~Hence, the generated data is also a useful basis for change detection of, e.g., the ice surface (Milius and Petters, 2012)~~In general, surface types could be distinguished if they have a significant difference in intensity.

The portable nature, low cost, and robustness of MOLISENS opens up for new applications well beyond cave mapping. Mobile high resolution 3D mapping of glacier fronts using snowmobiles on sea ice is another possible application and could be conducted at relatively high velocities (up to 60-80km/h). Similarly, regular mapping of coastal bluffs susceptible to coastal erosion ~~(e.g. Guégan and Christiansen, 2017)~~(e.g., Guégan and Christiansen, 2017), can be undertaken throughout the polar night season that hinder ~~structure-from-motion SfM~~ photogrammetry for large parts of the year in polar regions.

Besides mobile measurements, static measurements can be conducted with MOLISENS to record rapid processes in 3D over time with up to 20Hz. The scanner can be placed permanently in an area of interest and in case of an event, the scanning process could be initiated automatically or remotely. Vice versa constant scanning could detect a process happening which would trigger further process chains.

MOLISENS is also a handy teaching tool since it rapidly acquires data at a fraction of the cost of a conventional TLS. In addition, it can be taken along on excursions more easily, and safety concerns are minimal even in large groups due to the laser class 1 rating. ~~Both at~~At the University of Graz and the University Centre in Svalbard (UNIS) it is planned to use MOLISENS for excursions and practicals focusing on cryospheric topics, mapping methods, integrated geological methods, and digital geological techniques (Senger et al., 2021).

~~Other potential use cases in physical geography are:-~~

- ~~- Underground measurements: cave/mine mapping-~~
- ~~- Monitoring glacier caves, calving glaciers-~~
- ~~- Monitoring of snow and avalanches-~~

- ~~– Monitoring of mass movements~~
- ~~– Monitoring of fluvial systems~~
- ~~– Monitoring of erosion and deposition processes~~
- ~~– Sea ice detection and mapping~~
- 415 ~~– Coastal mapping~~
- ~~– Archaeology, historical and cultural preservation~~
- ~~– Forestry surveys~~

Potential use cases in urban environments are:

- ~~– Highways surveys~~
- 420 ~~– Roadside inventory projects~~
- ~~– Power line corridor surveys~~
- ~~– 3D City modeling~~
- ~~– 3D indoor modeling~~

This list can be further extended since the system can be attached to a wide range of platforms. Tests have been conducted
425 with platforms like cars, agricultural machines, and boats with promising results. Further optimizing weight and power consumption of the system can also enable small UAVs as potential platforms. Apart from geoscientific applications, MOLISENS provides an easy to use setup for testing automotive perception sensors for, e.g., sensor modeling and sensor Fault Detection, Identification, and Recovery (FDIR) method development.

7 Conclusion

430 In this work, we present a newly developed mobile lidar sensor system called MOLISENS. The system combines an automotive lidar with ~~IMU and GNSS~~ IMU and GNSS. It provides the opportunity to collect 3D data for a wide range of use cases and applications. Besides the hardware we introduced the post-processing tools provided by the two open source packages LIO-SAM and *pointcloudset*. LIO-SAM is a SLAM algorithm for cumulative point cloud generation, and *pointcloudset* a Python package for analysis and post-processing of static measurements.

435 The integration of the automotive lidar OS1-64 and the mobile mapping approach was tested in measurement campaigns in the Lurgrotte cave, Austria and in glacier caves on ~~Longyearbreen~~ Longyearbreen, Svalbard. The system offers a flexible, easy to use, and time-efficient way to acquire 3D point cloud, GNSS, and IMU data. The offline SLAM processing resulted in point

clouds which can be the basis to investigate numerous geoscientific problems. The robustness of the sensors and the data logger as well as the battery and storage capacities are well suited to demanding fieldwork situations.

440 In the near future, additional sensors, such as radar and camera, shall be integrated into MOLISENS and further broaden the range of applications. This is possible due to the modular design structure of MOLISENS.

Code and data availability. pointcloudset is available at <https://github.com/virtual-vehicle/pointcloudset> and LIO-SAM at <https://github.com/TixiaoShan/LIO-SAM>

Sample availability. Point cloud data from Longyearbreen Glacier Cave, Svalbard is available at <https://doi.org/10.3217/182j2-hdn17>

445 *Competing interests.* No competing interests are present.

Acknowledgements. The publication was written at the University of Graz and at the Virtual Vehicle Research GmbH. The authors would like to acknowledge the financial support within the COMET K2 Competence Centers for Excellent Technologies from the Austrian Federal Ministry for Climate Action (BMK), the Austrian Federal Ministry for Digital and Economic Affairs (BMDW), the Province of Styria (Dept. 12) and the Styrian Business Promotion Agency (SFG). The Austrian Research Promotion Agency (FFG) has been authorised for the programme management. A special thanks to Oliver Mariani from Virtual Vehicle Research GmbH for supporting the construction of several hardware parts of MOLISENS. The authors would like to acknowledge Andreas Schinnerl for providing access to the Lurgrotte Semriach and supporting the measurements. The fieldwork in Svalbard was in part funded by the Svalbard Science Forum Arctic Field Grant. The authors acknowledge the financial support by the University of Graz.

450

References

- 455 AccuPower Research, Development and Distribution Company (Ltd.): AccuPower AkkuPacks, <https://www.accupower.at/produkt-kategorie/akkus/lithium/akkupacks/>, accessed 01 February 2022, 2022.
- Alexander, A., Obu, J., Schuler, T. V., Kaab, A., and Christiansen, H. H.: Subglacial permafrost dynamics and erosion inside subglacial channels driven by surface events in Svalbard, *The Cryosphere*, 14, 4217–4231, <https://doi.org/10.5194/tc-14-4217-2020>, 2020.
- Bălașa, R. I., Olaru, G., Constantin, D., Ștefan, A., Bîlu, C. M., and Bălăceanu, M. B.: LIDAR based distance estimation for emergency
460 use terrestrial autonomous robot, 14th International Conference on Electronics, Computers and Artificial Intelligence (ECAI), 13, 1–4, <https://doi.org/10.1109/ECAI52376.2021.9515047>, 2021.
- Behley, J. and Stachniss, C.: Efficient Surfel-Based SLAM using 3D Laser Range Data in Urban Environments, in: Conference: Robotics: Science and Systems 2018, Pittsburgh, Pennsylvania, USA, <https://doi.org/10.15607/RSS.2018.XIV.016>, 2018.
- Birkebak, M., Stearns, J., Durell, C., and Scharpf, D.: Radiometry 101 Calibrating with diffuse reflecting targets, <https://www.photonicsonline.com/doc/radiometry-calibrating-with-diffuse-reflecting-targets-0001>, 2018.
465
- Bock, H. and Dolischka, A.: Plan der Lurgrotte Peggau – Semriach, Tech. rep., Graz, m = 1:2.500, 1953.
- Boehler, W., Vicent, M., and Marbs, A.: Investigating laser scanner accuracy, in: Proc. CIPA XIXth Int, Symposium. 34, 2003.
- Bosse, M., Zlot, R., and Flick, P.: Zebedee: Design of a Spring-Mounted 3-D Range Sensor with Application to Mobile Mapping, *IEEE Transactions on Robotics*, 28, 1104–1119, <https://doi.org/10.1109/TRO.2012.2200990>, 2012.
- 470 Continental AG: Technical Documentation ARS 404-21 (Entry) and ARS 408-21 (Premium), Version 1.0, Tech. rep., Continental Engineering Services GmbH, 2016.
- Continental AG: ARS 408-21 Premium Long Range Radar Sensor 77 GHz, ARS 408-21 datasheet, Tech. rep., Continental Engineering Services GmbH, 2017.
- Deems, J. S., Painter, T. H., and Finnegan, D. C.: Lidar measurement of snow depth: a review, *Journal of Glaciology*, 59, 467–479,
475 <https://doi.org/10.3189/2013JoG12J154>, 2013.
- Druml, N., Maksymova, I., Thurner, T., van Lierop, D., Hennecke, M., and A., F.: 1d Mems Micro-Scanning LiDAR, Conference on Sensor Device Technologies and Applications (SENSORDEVICES), 9, 2018.
- Dunning, D.: What Is Difference Between RTK Fix and RTK Float?, <https://sciencing.com/difference-between-rtk-fix-rtk-float-12245568.html>, accessed 04 February 2022, 2018.
- 480 Gallay, M., Kaňuk, J., Hochmuth, Z., Meneely, J., Hofierka, J., and Sedlák, V.: Large-scale and high-resolution 3-d cave mapping by terrestrial laser scanning: A case study of the Domica cave, Slovakia, *International Journal of Speleology*, 44, 277–291, 2015.
- Goelles, T., Schlager, B., Muckenhuber, S., Haas, S., and Hammer, T.: pointcloudset: Efficient Analysis of Large Datasets of Point Clouds Recorded Over Time, *Journal of Open Source Software*, 6, 3471, <https://doi.org/10.21105/joss.03471>, 2021.
- Guégan, E. B. M. and Christiansen, H. H.: Seasonal Arctic Coastal Bluff Dynamics in Adventfjorden, Svalbard, *Permafrost and Periglac. Process*, 28, 18–31, <https://doi.org/10.1002/ppp.1891>, 2017.
485
- Guðmundsdóttir, A. S.: Morphology and Development of the Longyearbreen Ice Cave, Central Spitsbergen, Svalbard, Bachelor Thesis BS, ritgerð, Jarðvísindadeild, Háskóli Íslands, 2011.
- Hammer, T.: New applications of automotive lidar sensors in geosciences, mathesis, TU Graz, 2021.
- Hasch, J.: Driving Towards Automotive Radar Technology Trends, *IEEE MTT-S International Conference on Microwaves for Intelligent*
490 *Mobility*, pp. 1–4, 2015.

- Hecht, J.: Lidar for self-driving cars, *Optics and Photonics News*, 29, 26–33, 2018.
- Ibeo Automotive Systems GmbH: ibeo LUX 4L / ibeo LUX 8L / ibeo LUX HD Datasheet, https://hexagondownloads.blob.core.windows.net/public/AutonomouStuff/wp-content/uploads/2019/05/ibeo_LUX_datasheet_whitelabel.pdf, accessed 4 October 2021, 2021.
- Janos, D. and Przemysław, K.: Evaluation of Low-Cost GNSS Receiver under Demanding Conditions in RTK Network Mode, *Sensors* 21, 495 16, 5552, <https://doi.org/10.3390/s21165552>, 2021.
- Kukko, A., Kaartinen, H., Hyypä, J., and Chen, Y.: Multiplatform mobile laser scanning: Usability and performance, *Sensors*, 12, 11 712–11 733, 2012.
- Lague, D.: Chapter 8 - Terrestrial laser scanner applied to fluvial geomorphology, vol. 23 of *Developments in Earth Surface Processes*, pp. 231–254, Elsevier, <https://doi.org/10.1016/B978-0-444-64177-9.00008-4>, 2020.
- 500 LeeddarTech Inc.: LeeddarTech Launches PixSet, the Industry’s First Full-Waveform Flash LiDAR Dataset, <https://leddartech.com/leddartech-launches-pixset-industrys-first-full-waveform-flash-lidar-dataset/>, 2021.
- Leica Geosystems AG: Leica ScanStation P30/P40: Leica P30/P40 data sheet, <https://leica-geosystems.com/-/media/files/leicageosystems/products/datasheets/scan/leica%20scanstation%20p30-p40%20ds%20832252%200119%20en%20arch%20bui%20bim%20lr.ashx?la=de-at&hash=FE9B9FD3A500B5D6332AF0439D725BD8>, accessed 4 October 2021, 2021a.
- 505 Leica Geosystems AG: Leica ScanStation P50: Leica P50 data sheet, <https://leica-geosystems.com/-/media/files/leicageosystems/products/datasheets/scan/leica%20scanstation%20p50%20ds%20869145%200119%20en%20lr.ashx?la=de-at&hash=9ABF78CC529268400306349359BE769A>, accessed 4 October 2021, 2021b.
- Marti, E., Perez, J., Miguel, M. A., and Garcia, F.: A Review of Sensor Technologies for Perception in Automated Driving, *IEEE Intelligent Transportation Systems Magazine*, pp. 94–108, <https://doi.org/10.1109/MITS.2019.2907630>, 2019.
- 510 Milius, J. and Petters, C.: Eisriesenwelt – from laser scanning to photo-realistic 3d model of the biggest ice cave on earth, *GI-Forum 2012: Geovisualization, Society and Learning*, Salzburg, 513, 513–523, 2012.
- Moosmann, F. and Stiller, C.: Velodyne SLAM, in: *Proceedings of the IEEE Intelligent Vehicles Symposium*, pp. 393–398, Baden-Baden, Germany, http://www.mrt.kit.edu/z/publ/download/Moosmann_IV11.pdf, 2011.
- Muckenhuber, S., Holzer, H., and Bockaj, Z.: Automotive lidar modelling approach based on material properties and lidar capabilities, 515 *Sensors (Switzerland)*, 20, 1–26, 2020.
- Nahler, C., Steger, C., and Druml, N.: Quantitative and qualitative evaluation methods of automotive time of flight based sensors, in: A., editors, *Proceedings - Euromicro Conference on Digital System Design, DSD 2020*, edited by Trost, A., Zemva, A., and Skavhaug, A., pp. 651–659, Institute of Electrical and Electronics Engineers, United States., 2020.
- Neugirg, F., Stark, M., Kaiser, A., Vlacilova, M., Della Seta, M., Vergari, F., Schmidt, J., Becht, M., and Haas, F.: Erosion processes in calanchi in the Upper Orcia Valley, Southern Tuscany, Italy based on multitemporal high-resolution terrestrial LiDAR and UAV surveys, 520 *Geomorphology*, 269, 8–22, <https://doi.org/10.1016/j.geomorph.2016.06.027>, 2016.
- Ocular Robotics Limited: RobotEye RE08 3D LIDAR, <https://www.ocularrobotics.com/products/lidar/re08/>, 2018.
- Olsen, M. J. and Kayen, R.: Post-Earthquake and Tsunami 3D Laser Scanning Forensic Investigations, pp. 477–486, *American Society of Civil Engineers*, <https://doi.org/10.1061/9780784412640.051>.
- 525 O’Neal, M. A. and Pizzuto, J. E.: The rates and spatial patterns of annual riverbank erosion revealed through terrestrial laser-scanner surveys of the South River, Virginia, *Earth Surface Processes and Landforms*, 36, 695–701, <https://doi.org/10.1002/esp.2098>, 2011.
- Ouster Inc.: Ouster Example Code, https://github.com/ouster-lidar/ouster_example/tree/20201209, accessed 01 February 2022, 2020a.

- Ouster Inc.: OS1 Mid-Range High resolution Imaging Lidar, Ouster OS-1 Gen1 data sheet, <https://data.ouster.io/downloads/datasheets/datasheet-gen1-v2p0-os1.pdf>, accessed 13 December 2021, 2020b.
- 530 Ouster Inc.: OS0 Ultra-Wide View High-Resolution Imaging Lidar, Ouster OS-0 data sheet, <https://data.ouster.io/downloads/datasheets/datasheet-revd-v2p1-os0.pdf>, accessed 4 October 2021, 2021a.
- Ouster Inc.: OS1 Mid-Range High resolution Imaging Lidar, Ouster OS-1 data sheet, <https://data.ouster.io/downloads/datasheets/datasheet-revd-v2p1-os1.pdf>, accessed 4 October 2021, 2021b.
- Ouster Inc.: OS2 Long-Range High-Resolution Imaging Lidar, Ouster OS-2 data sheet, <https://data.ouster.io/downloads/datasheets/datasheet-revd-v2p1-os2.pdf>, accessed 4 October 2021, 2021c.
- 535 Ouster Inc.: ES2 Solid-State Lidar is now Digital, <https://ouster.com/products/es2-solid-state-lidar-sensor/>, accessed 12 January 2022, 2022.
- Patole, S. M., Torlak, M., Wang, D., and Murtaza, A.: Automotive radars: A review of signal processing techniques, *IEEE Signal Processing Magazine*, 34, 22–35, <https://doi.org/10.1109/MSP.2016.2628914>, 2017.
- Perşoiu, A. and Lauritzen, S.-E.: Ice Caves, Elsevier, <https://doi.org/10.1016/C2016-0-01961-7>, 2017.
- 540 Plan, L. and Oberender, P.: Höhlen und Karst in Österreich, chap. Höhlen in Österreich, pp. 11–22, Oberösterreichisches Landesmuseum, 2016.
- Prokop, A., Schirmer, M., Rub, M., Lehning, M., and Stocker, M.: A comparison of measurement methods: terrestrial laser scanning, tachymetry and snow probing for the determination of the spatial snow-depth distribution on slopes, *Annals of Glaciology*, 49, 210–216, <https://doi.org/10.3189/172756408787814726>, 2008.
- 545 Pukanská, K., Bartoš, K., Bella, P., Gašinec, J., Blistan, P., and Kovanič, v.: Surveying and High-Resolution Topography of the Ochtiná Aragonite Cave Based on TLS and Digital Photogrammetry, *Applied Sciences*, 10, <https://doi.org/10.3390/app10134633>, 2020.
- Rabatel, A., Deline, P., Jaillot, S., and Ravanel, L.: Rock falls in high-alpine rock walls quantified by terrestrial lidar measurements: A case study in the Mont Blanc area, *Geophysical Research Letters*, 35, <https://doi.org/10.1029/2008GL033424>, 2008.
- Ramasubramanian, K. and Ramaiah, K.: Moving from Legacy 24 GHz to State-of-the-Art 77-GHz Radar, *ATZelextronik worldwide*, 13, 550 46–49, <https://doi.org/10.1007/s38314-018-0029-6>, 2018.
- Rapstine, T. D., Rengers, F. K., Allstadt, K. E., Iverson, R. M., Smith, J. B., Obryk, M., Logan, M., and Olsen, M. J.: Reconstructing the velocity and deformation of a rapid landslide using multiview video, *Journal of Geophysical Research - Earth Surface*, 125, <https://doi.org/10.1029/2019JF005348>, 2020.
- Rengers, F. K. and Tucker, G. E.: The evolution of gully headcut morphology: a case study using terrestrial laser scanning and hydrological monitoring, *Earth Surface Processes and Landforms*, 40, 1304–1317, <https://doi.org/10.1002/esp.3721>, 2015.
- 555 Rengers, F. K., Rapstine, T. D., Olsen, M., Allstadt, K. E., Iverson, R. M., Leshchinsky, B., Obryk, M., and Smith, J. B.: Using High Sample Rate Lidar to Measure Debris-Flow Velocity and Surface Geometry, *Environmental and Engineering Geoscience*, 27, 113–126, <https://doi.org/10.2113/EEG-D-20-00045>, 2021.
- Riegl Laser Measurement Systems GmbH: 3D Ultra Long Range Terrestrial Laser Scanner with Online Waveform Processing Riegl VZ-6000, 560 http://www.riegl.com/uploads/tx_pxpriegl/downloads/RIEGL_VZ-6000_Datasheet_2020-09-14.pdf, accessed 4 October 2021, 2020.
- Senger, K., Betlem, P., Grundvag, S. A., Horota, R. K., Buckley, S. J., Smyrak-Sikora, A., Jochmann, M. M., Birchall, T., Janocha, J., Ogata, K., Kuckero, L., Johannessen, R. M., Lecomte, I., Cohen, S. M., and Olaussen, S.: Teaching with digital geology in the high Arctic: opportunities and challenges, *Geoscience Communication*, 4, 399–420, <https://doi.org/10.5194/gc-4-399-2021>, 2021.
- Shan, T., Englot, B., Meyers, D., Wang, W., Ratti, C., and Daniela, R.: Lio-sam: Tightly-coupled lidar inertial odometry via smoothing and mapping, *IEEE/RSJ International Conference on Intelligent Robots and Systems (IROS)*, pp. 5135–5142, 2020.
- 565

- s.m.s, smart microwave sensors GmbH: SmartMicro Product information, traffic management sensor, TRUGRD Stream, https://www.smartmicro.com/fileadmin/media/Downloads/Traffic_Radar/Sensor_Data_Sheets__24_GHz_/Datashet_TRUGRD_Stream.pdf, accessed 4 October 2021, 2021.
- 570 Šupinský, J., Kaňuk, J., Hochmuth, Z., and Gallay, M.: Detecting dynamics of cave floor ice with selective cloud-to-cloud approach, *The Cryosphere*, 13, 2835–2851, 2019.
- Telling, J., Lyda, A., Hartzell, P., and Glennie, C.: Review of Earth science research using terrestrial laser scanning, *Earth-Science Reviews*, 169, 35–68, <https://doi.org/10.1016/j.earscirev.2017.04.007>, 2017.
- Thakur, R.: Scanning LIDAR in Advanced Driver Assistance Systems and Beyond: Building a road map for next-generation LIDAR technology, *IEEE Consumer Electronics Magazine*, 5, 48–54, 2016.
- 575 The pandas development team: pandas-dev/pandas: Pandas, <https://doi.org/10.5281/zenodo.3509134>, 2020.
- Tucci, G., Visintini, D., Bonora, V., and Parisi, E. I.: Examination of Indoor Mobile Mapping Systems in a Diversified Internal/External Test Field, *Applied Sciences*, 8, <https://doi.org/10.3390/app8030401>, 2018.
- Velodyne Lidar Inc.: Velodyne Lidar Alpha Prime: Velodyne Alpha Prime data sheet, <https://velodynelidar.com/products/alpha-prime/>, accessed 4 October 2021, 2021.
- 580 Voordendag, A. B., Goger, B., Klug, C., Prinz, R., Rutzinger, M., and Kaser, G.: Automated And Permanent Long-Range Terrestrial Laser Scanning In A High Mountain Environment: Setup And First Results, *ISPRS Annals of the Photogrammetry, Remote Sensing and Spatial Information Sciences*, V-2-2021, 153–160, <https://doi.org/10.5194/isprs-annals-V-2-2021-153-2021>, 2021.
- Wang, Y., Liang, X., Flener, C., Kukko, A., Kaartinen, H., Kurkela, M., Vaaja, M., Hyypä, H., and Alho, P.: 3d modeling of coarse fluvial sediments based on mobile laser scanning data, *Remote Sensing*, 5, 4571–4592, 2013.
- 585 Warren, S. G. and Brandt, R. E.: Optical constants of ice from the ultraviolet to the microwave: A revised compilation, *Journal of Geophysical Research: Atmospheres*, 113, <https://doi.org/https://doi.org/10.1029/2007JD009744>, 2008.
- Watzenig, D. and Horn, M.: Automated Driving - Safer and More Efficient Future Driving, Springer, Cham, <https://doi.org/10.1007/978-3-319-31895-0>, 2017.
- Wilkinson, M., Jones, R., Woods, C., Gilment, S., McCaffrey, K., Kokkalas, S., and Long, J.: A comparison of terrestrial laser scanning and structure-from-motion photogrammetry as methods for digital outcrop acquisition, *Geosphere*, 12, 1865–1880, <https://doi.org/10.1130/GES01342.1>, 2016.
- 590 Williams, J. G., Rosser, N. J., Hardy, R. J., Brain, M. J., and Afana, A. A.: Optimising 4-D surface change detection: an approach for capturing rockfall magnitude–frequency, *Earth Surface Dynamics*, 6, 101–119, <https://doi.org/10.5194/esurf-6-101-2018>, 2018.
- Williams, J. G., Rosser, N. J., Hardy, R. J., and Brain, M. J.: The Importance of Monitoring Interval for Rockfall Magnitude-Frequency Estimation, *Journal of Geophysical Research: Earth Surface*, 124, 2841–2853, <https://doi.org/10.1029/2019JF005225>, 2019.
- Xsens: Download MT Software Suite 2021.4, <https://content.xsens.com/mt-software-suite-download>, accessed 01 February 2022, 2021.
- Zhang, J. and Singh, S.: Low-drift and Real-time Lidar Odometry and Mapping, *Autonomous Robots*, 41, 401–416, <https://doi.org/10.1007/s10514-016-9548-2>, 2017.
- Zhou, Q.-Y., Park, J., and Koltun, V.: Open3D: A Modern Library for 3D Data Processing, arXiv:1801.09847, 2018.