



# New Hydrometeorological Observations from Inglefield Land and Thule, NW Greenland

5 Sarah E. Esenther<sup>1, 2</sup>, Laurence C. Smith<sup>1, 2</sup>, Adam LeWinter<sup>3</sup>, Lincoln H Pitcher<sup>4,5</sup>, Brandon T. Overstreet<sup>6</sup>, Aaron Kehl<sup>3</sup>, Cuyler Onclin<sup>7</sup>, Seth Goldstein<sup>2</sup>, Jonathan C. Ryan<sup>8</sup>

<sup>1</sup>Department of Earth, Environmental, and Planetary Sciences (DEEPS), Brown University, Providence, Rhode Island, 02912, USA

<sup>2</sup>Institute at Brown for Environment and Society (IBES), Brown University, Providence, Rhode Island, 02912, USA

<sup>3</sup>U.S. Army Corps of Engineers, Cold Regions Research and Engineering Laboratory, Hanover, New Hampshire, 03755, USA

10 <sup>4</sup>Cooperative Institute for Research in Environmental Sciences (CIRES), University of Colorado (CU) Boulder, Boulder, CO, 80309, USA

<sup>5</sup>Oak Ridge Institute for Science and Education (ORISE), Oak Ridge, TN, 37830, USA

<sup>6</sup>Department of Geology and Geophysics, University of Wyoming, 1000 E. University Ave. Laramie, WY, 82071, USA

<sup>7</sup>Consultant, Hydrology Technologist and Field Safety specialist, Saskatoon, Saskatchewan, S7J2S1, Canada

15 <sup>8</sup>Department of Geography, University of Oregon, Eugene, Oregon 97401, USA

*Correspondence to:* Sarah E. Esenther (sarah\_esenther@brown.edu)

**Abstract.** Meltwater runoff from the Greenland Ice Sheet (GrIS) is an important contributor to global sea level rise, but substantial uncertainty exists in its measurement and prediction. Common approaches for estimating ice sheet runoff are in situ gauging of proglacial rivers draining the ice sheet, and surface mass balance (SMB) modeling. To obtain hydrological and meteorological datasets suitable for both runoff characterization and SMB model validation, we established an automated weather station (AWS) and cluster of traditional and experimental river stage sensors on the Minturn River, the largest proglacial river draining Inglefield Land, NW Greenland. Secondary installations measuring river stage were installed in the Fox Canyon River and North River at Thule Air Base, NW Greenland. Proglacial runoff at these sites is dominated by supraglacial processes only, uniquely advantaging them for SMB studies. The three installations provide rare hydrological time-series and an opportunity to evaluate experimental measurements of river stage from a harsh, little-studied polar region. The installed instruments include submerged vented and non-vented pressure transducers, a bubbler sensor, experimental bank-mounted laser rangefinders, and time-lapse cameras. The first three years of observations (2019 to 2021) from these stations indicate a) a meltwater runoff season from late June to late August/early September, roughly synchronous throughout the region; b) early onset (~June 23 to July 8) of a strong diurnal runoff signal in 2019 and 2020, suggesting minimal meltwater storage in snow/firn; c) one-day lagged air temperature displays the strongest correlation with river stage; d) river stage correlates more strongly with ablation zone albedo than with net radiation; and e) late-summer rain-on-ice events appear to trigger the region's sharpest and largest floods. The new gauging stations provide valuable in situ hydrological observations

20  
25  
30



from a little-studied, rapidly changing area and are freely available through the PROMICE network (<https://promice.org/weather-stations/>).

## 35 Introduction

Climate change-induced meltwater runoff from the Greenland Ice Sheet (GrIS) is now the dominant mass loss pathway for the GrIS (Andersen et al., 2015; Mottram et al., 2019; Shepherd et al., 2020) and is projected to increase throughout the 21st century (Andersen et al., 2015; Lenaerts et al., 2015; Enderlin et al., 2014). However, current climate models typically calculate runoff as a mass-budget residual which is susceptible to propagated errors from other terms. There is therefore a growing need  
40 for accurate, in situ hydrological datasets for characterizing runoff magnitude and timing as well as validating ice sheet surface mass balance (SMB) models (Smith et al., 2017; Smith et al., 2021). In situ measurements of runoff are useful for direct observation of GrIS runoff contributions to sea level rise, as well as for assessing hydrological models, hydropower potential, and freshwater resources critical for decision makers (Smith et al., 2017; Alther et al., 1981; Instanes et al., 2015).

45 Despite this need for in situ hydrological measurements, few GrIS proglacial rivers are gauged and the majority of SMB runoff validation studies have been conducted in SW Greenland (Smith et al., 2017; Mernild et al., 2011; Mernild et al., 2018; Cooper et al., 2018; Smith et al., 2015). The NW GrIS has also experienced extensive melting since 2000 and is now one of the largest contributors to GrIS mass losses (Mouginot et al., 2019). By 2100, runoff mass losses from the NW GrIS are projected to reach 201 Gt/yr, far exceeding the anticipated dynamic losses of 22 Gt/yr from the region at that time (Muntjewerf et al., 2020).  
50 However, the NW GrIS lacks in situ measurements necessary to characterize the region's hydrometeorology, quantify ocean-going runoff, and validate ice sheet SMB models.

More generally, permanent river gauging installations are time- and resource-intensive to install and maintain in remote, harsh Arctic environments. Proglacial river gauging sites are typically difficult to maintain due to high sediment bedload and shifting,  
55 braided channels. In situ sensor systems generally require expert installation and repair, a difficulty compounded in remote study locations with poor accessibility. Traditional pressure-based river gauge technologies (i.e. pressure transducers) require full immersion and are thus poorly suited for Arctic rivers where thick ice, spring floods, and rolling cobbles can cause sensor damage, movement, or loss. Recently, non-contact methods of river stage measurement including radar, laser rangefinder, and camera have received increasing interest (Bandini et al., 2022; Buyaert et al., 2020; Goldstein et al., 2023), but laser rangefinder  
60 and radar sensors are traditionally nadir-looking and thus requiring mounting to a bridge, precluding their use in undeveloped Arctic locations. To our knowledge no in situ hydrological observations are currently available for NW Greenland, an exceedingly cold and remote region.



This paper describes new hydrometric sensor installations and their first three years of operation and data for three proglacial river gauging sites in NW Greenland. The sensors include vented and non-vented pressure transducers, a bubbler sensor, bank-mounted laser rangefinders, and time-lapse cameras to record river stage (water level), and an automated weather station. The bank-mounted laser rangefinders are oblique-looking, a novel approach to laser rangefinder stage measurement for remote river gauges. An initial assessment of data and instrument performance is provided for the 2019 to 2021 runoff seasons. To mitigate intermittent data gaps found in all instruments, we also create a hybrid, multi-sensor river stage product for the Minturn River, Inglefield Land. Following technical descriptions of the instruments and performance, a preliminary characterization of diurnal, seasonal, and interannual variability in NW GrIS meltwater runoff is presented. We conclude that experimental new hydrometeorological sensor installations can improve physical understanding of ice sheet runoff and SMB for a remote, little-studied, hydrologically active area of the Greenland Ice Sheet.

## 1 Study sites

In July 2019 we established three new hydrometric sensor installations on the Minturn River ( $78.590801^\circ$ ,  $-68.992706^\circ$ , Inglefield Land), North River ( $76.538980^\circ$ ,  $-68.728190^\circ$  located on Thule Air Base (AB)), and Fox Canyon River ( $76.466460^\circ$ ,  $-68.579060^\circ$ , near Thule AB) (Fig. 1). The Minturn River watershed is the largest of the three ( $3,864 \text{ km}^2$ ,  $\sim 76\%$  glaciated) with elevations ranging from 314 m to 1,653 m (Fig. 1, (a)). The smaller North River ( $229 \text{ km}^2$ ,  $\sim 56\%$  glaciated) and Fox Canyon River ( $115 \text{ km}^2$ ,  $\sim 31\%$  glaciated) watersheds drain through or near Thule AB (Fig. 1, (b) and (c)) with elevations ranging from 59 m to 1045 m and 199 m to 913 m, respectively. In each of the watersheds, the ice sheet is fully grounded with no known surface-to-bed connections (i.e. moulins or water-filled crevasses). Instead, ice sheet runoff is routed entirely over the ice surface through long, semi-parallel supraglacial streams directly onto bedrock-dominated proglacial zones (Fig. 2; see also Yang et al., 2019; Li et al., 2022), signifying that proglacial runoff is dominated by surface processes with negligible influence of en- or sub-glacial hydrology. The dominance of supraglacial hydrology in NW Greenland is distinctly different from the SW GrIS, where surface runoff typically enters moulins prior to reaching the proglacial zone (Smith et al., 2015; Yang et al., 2016), sometimes even at high elevations (Gagliardini and Werder, 2018).

## 2 Instruments and data collection

### 2.1 Minturn River, Inglefield Land

The hydrometric sensor package at the Minturn River includes a compact constant flow bubbler, two custom-built, bank-mounted, oblique-looking laser rangefinder systems, an automated weather station (AWS), and two StarDot NetCam SC 5 MPixel cameras. The bubbler, which began measurement on July 9, 2019, is a Sutron® Constant Flow Bubbler (CF Bubbler) (Compact Constant Flow Bubbler, 2022), a self-contained, precision device to measure water level and temperature. The CF Bubbler consists of a pump, tank, manifold, control board, display/keypad within a  $10.5'' \times 8.5'' \times 7.5''$  polycarbonate NEMA-



4X enclosure. Measurements are collected every 15-minutes and transmitted via Iridium satellite modem every hour. In 2021,  
95 an additional vented Level TROLL 700H Data Logger PT was installed at the site. The sensor is contained in a titanium body  
and measures water pressure and temperature, from which water level is determined. This second vented Level TROLL PT  
has operated across the river channel from the CF Bubbler since June 16, 2021.

River stage measurements are complemented by two custom-built, bank-mounted, oblique-looking Laser rangefinder systems  
100 (one on each riverbank). (Fig. 3). These ruggedized systems were built at CRREL in collaboration with Crane Johnson from  
the National Weather Service, who previously developed their concept and programming. A Laser Technology Inc. (LTI)  
Trusense S200 (Buytaert and Sah, 2020), a time of flight-based long range distance finder utilizing the 905 nm wavelength,  
and an inclinometer are contained in an aluminum enclosure positioned with a clear line of sight to the water surface. Fifty  
laser returns are recorded on the hour each hour and recorded by a Campbell Scientific CR1000X data logger, along with  
105 battery voltage, panel temperature, and inclinometer angle. Hourly first, strongest, and last laser returns are transmitted with  
the system information and number of transmission tries via the Iridium satellite network. The system is powered by a 10 watt  
solar panel on a versatile polar mast mounting system, with energy stored in a deep cycle sealed lead acid battery.

Meteorological measurements are collected by an automated weather station (AWS) which was installed at the Minturn River  
110 on July 9, 2019 (Fig. 4). Wind speed and direction are measured with a Sutron Ultrasonic Wind Sensor 5600-0215 (Wind  
Speed, 2022). Two Kipp and Zonen CMP3 Pyranometers (Kipp and Zonen, 2022), one facing upward and one facing  
downward, measure incoming and reflected solar irradiance. A Sutron Accubar Barometric Pressure Sensor 5600-0120  
(Accubar, 2022) containing a highly accurate solid state pressure transducer measures barometric pressure. Air temperature is  
recorded to the nearest  $\pm 0.1^{\circ}\text{C}$  by a Sutron Air Temperature Sensor 5600-0020 (Air Temperature, 2022) and to the nearest  
115  $\pm 0.3^{\circ}\text{C}$  by a Sutron AT/RH High Accuracy Sensor (AT/RH, 2022), which additionally measures relative humidity to the  
nearest  $\pm 1.5\%$ . These AWS measurements are collected every 15 minutes and telemetered via Iridium satellite modem every  
hour.

Finally, two StarDot NetCam SC 5 MPixel cameras (Multi-Megapixel, 2019), which were installed on July 12, 2019, collect  
120 images of the Minturn River and foreground every 3 hours when there is sufficient ambient lighting (e.g. night time and winter  
images will be underexposed and are therefore not useful data). The timing of these image acquisitions is alternated, yielding  
an image every 1.5 hours. Images are transmitted to CRREL via Iridium satellite modem. Each camera view includes the  
opposite bank of the river, allowing for calculation of river stage through edge detection (Goldstein et al.) as well as visual  
evidence of river ice, rain, snow, and other environmental conditions.

125

During the July 2019 field campaign, Terrestrial Laser Scanner (TLS) elevation point clouds of the site were collected with a  
RIEGL VZ-400i 3D Laser Scanner (RIEGL, 2022), using a Trimble R10 base station and rover for GNSS positional



measurements. Scans were taken from 27 positions around the site between July 10 and July 11, 2019. Scans from each position were aggregated into a 3D digital elevation model (DEM) that includes all permanently installed instrumentation. Optical surveys were conducted from July 8 to July 11, 2019 to independently establish the elevations of instruments and river stage relative to newly established benchmarks.

Annual service trips have been completed since the instrument cluster was established in 2019. Due to international research travel restrictions to Greenland during the COVID-19 pandemic, ASIAQ Greenland Survey and Vectrus (a mission-support organization servicing Thule AB, <https://www.vectrus.com/>), completed the 2020 and 2021 service trips, respectively. The ASIAQ service trip on June 21, 2020 replaced the AWS batteries, corrected wiring of its solar panel, replaced its SD card, replaced a SIM card to the right bank time-lapse camera, power cycled the lasers, and repaired a broken wire on the Sutron CF Bubbler. During a following Vectrus service trip on June 12, 2021, data was manually downloaded from all stations, the laser unit software was updated to retain the date while in sleep mode and wake up automatically on April 1, the batteries and charge controllers were all checked, the Level TROLL pressure transducer was installed, and all stations that had not yet turned on for the year were power cycled.

## 2.2 North and Fox Canyon River, Thule AB

On the right bank of the North River, a third custom-built, bank-mounted LT Trusense S200 laser rangefinder ranging system was installed during July 2019 and programmed to retrieve and telemeter river stage estimates every hour. As before, telemetry is via an Iridium satellite modem. Two Solinst Leveloggers (non-vented, self-contained, self-logging PTs) were installed on the left bank of the North River in July 2019 to record stage, one inserted on a slotted steel pipe and the other inserted in a slotted PVC pipe. A single corresponding Solinst Barologger was placed in the bank-mounted laser rangefinder box to record atmospheric pressure variations for later correction of the two PT stage records. All three pressure transducers record data every 15 minutes, aligned with the single beam laser rangefinder. Due to the close alignment of the two non-transmitting Levelogger records, the more complete Levelogger record was identified as the preferred pressure transducer record for the North River during the time period July 17, 2019 to May 22, 2021.

A vented Level TROLL 700H Data Logger PT was installed alongside the laser rangefinder on the North River in 2021 and began transmitting records on June 4, 2021. This vented Level TROLL PT is used as the PT stage record beginning June 4, 2021. These measurements were complemented by TLS elevation point clouds of the North River which were acquired on July 5, 2019 from twelve positions with the RIEGL VZ-2000 3D Laser Scanner, Trimble R10 base station, and rover for GNSS positional measurements. Scans from three additional positions were performed on October 5 and October 9, 2019. Optical surveys were conducted between June 30 and July 5, 2019, tying water level measurements to three newly established fixed benchmarks on boulders along the bank.

160



A Vectrus service trip on June 12, 2021 downloaded data files, power cycled the laser, checked the batteries and charge controllers, updated the laser software to allow for automatic spring wakeup, and installed the vented PT.

165 At the Fox Canyon River, a fourth custom-built, bank-mounted LT Trusense S200 laser rangefinder ranging system was installed on July 15, 2019, programmed to retrieve river stage measurements every 15 minutes and telemeter them hourly via an Iridium satellite modem. A RIEGL VZ-2000 3D Laser Scanner survey was performed during this initial installation trip to establish benchmarks. Optical surveys at the Fox Canyon River Bridge were performed between July 1 and July 4, 2019, using the three newly established fixed benchmarks. On June 12, 2021, a Vectrus service visit downloaded data files, power cycled the laser, checked the batteries and charge controllers, and updated the laser software for spring wakeup.

### 170 **2.3 Data telemetry, downloads, and public release**

Data from all four bank-mounted laser rangefinder systems, the Minturn River CF Bubbler, the Minturn and North River Level TROLL PTs, the Minturn time-lapse cameras, and the Minturn River AWS are telemetered hourly via the Iridium SBD network and received by the US Army Corps of Engineers. River stage and AWS measurements from the Minturn River are automatically forwarded to the Geological Survey of Denmark and Greenland (GEUS) PROMICE database  
175 (<https://dataverse.geus.dk/dataverse/PROMICE>) and included on their website under the station name ING\_1 (PROMICE, 2023).

Non-telemetered PTs were downloaded in the field. The North River Levellogger and Barologger PTs were installed on July 17, 2019 and recorded data until May 22, 2021. Minturn River cameras began collecting data on July 12, 2019.

### 180 **2.4 Remote sensing data**

Precipitation, snow cover, and albedo were obtained using satellite sensing to characterize ice surface conditions for the GrIS ablation zone over each watershed. Due to the small size of the North River and Fox Canyon River watersheds, statistical analyses of these watersheds did not have high confidence intervals and are omitted from this paper. Daily accumulated precipitation was derived from combined microwave IR was obtained from Integrated Multi-satellitE Retrievals for Global  
185 Precipitation Measurement (IMERG) (GPM, 2019). Snow cover data over the three watersheds was obtained from the NDSI\_Snow\_Cover layer and albedo was obtained from the Snow\_Albedo\_Daily\_Tile layer from the MODIS/Terra Snow Cover Daily L3 Global 500m SIN Grid product, Version 6.1 (Data Set ID: MOD10A1) (MODIS, 2023) These remotely sensed precipitation, snow cover, and albedo data products provide insight into additional aspects of the hydrometeorology of Minturn watershed.



## 190 2.5 Data processing

Some minor filtering was required to remove anomalous data and outliers. Stage values from the CF Bubbler data were clipped to fall between 0.6 m, the lowest value the CF Bubbler could read based on its position in the river, and 6 m, a conservative upper estimate of river stage. At the end of the 2020 melt season (September 2 to 12, 2020) the CF Bubbler returned some anomalously high stage measurements, likely due to freezing, which were also removed. The CF Bubbler pipe was abruptly  
195 displaced downward by 0.5 m between 3:15am and 3:30am on July 29, 2021, potentially due to turbulent flow. This change was confirmed by time-lapse camera imagery. Stage records following the offset were adjusted by +0.5m to maintain consistency with the rest of the record. This CF Bubbler record, along with records from all other stage instruments, was converted to water surface elevation (WSE) (WGS84/UTM Zone 19N, ellipsoid height) using optical surveys tied to fixed benchmarks.

200

Non-telemetered PT data at the North River were downloaded in the field using a Solinst Levelogger optical reader. The two Levelogger PT records were compensated for air pressure using the Barologger PT record and Levelogger 4.6.2 software. As the two Levelogger records were virtually identical, the one with the more complete record is used in the following analysis. Telemetered Level TROLL PT data are compensated for air pressure by CRREL. For analysis, this Level TROLL PT record  
205 was converted to WSE following the methodology described for the CF Bubbler (WGS84/UTM Zone 19N, ellipsoid height).

Telemetered returns from the bank-mounted laser rangefinder systems were received and processed into distance values by CRREL. First, last, and strongest values were transmitted to a webpage for instantaneous access. To filter outliers present in the Minturn River records, only physically realistic values were retained (between 6 m and 20 m for laser rangefinder M1 and  
210 between 5 m and 15 m for laser rangefinder M2). The median return of each record was then taken as the distance from the laser device to the water surface.

This median laser return distance was then used to calculate river stage as follows. As all rivers experienced zero flow during the cold season, the median corrected laser rangefinder return from each record was taken as the distance to the empty riverbed  
215 and/or frozen river ice surface as measured on a zero-flow day. At the Minturn River, zero-flow was visually confirmed with camera image records. Simple trigonometry was used to compute the vertical distance of the water surface below the laser box using the measured distance to the water surface and the vertical angle of the laser range finder. This vertical distance was then used to calculate river stage (Equation 1) relative to an arbitrary datum:

$$220 \text{ Stage} = Z_{\text{Lidar Box}} - \text{Median Lidar Distance} * \sin(\theta_{\text{Lidar Box}}) \quad (1)$$



Using the TLS point cloud captured at each study location in 2019, the ellipsoid-referenced elevation of each bank-mounted laser rangefinder unit could be found in the scans, yielding the WSE of each bank-mounted laser rangefinder record (WGS84/UTM Zone 19N). Some fixed anomalous offsets, likely from solar interference, occurred occasionally in some  
225 returns and their correction is described in Appendix 1. While the snow depth instrument from the AWS failed to function, all other meteorological instruments functioned as expected and their records were transmitted to the PROMICE database without further processing.

River stage fluctuations were also extracted from time-lapse camera images by identifying the wetted shoreline  
230 position and combining this with the TLS scan of the bank topography (Goldstein, et al.). Full details of this method can be found in Goldstein, et al. (in review), but, briefly, a Canny edge detector was used to automatically detect the shoreline position from each camera image, with manual delineations performed if necessary. Georectifying these shoreline positions and projecting them onto the TLS scan of the riverbank yielded estimates of river height fluctuation with an estimated error of  $\pm 0.185$  m (Goldstein, et al.). This camera record has recognized uncertainty for the lowest  $\sim 75\%$  of Minturn River stage values,  
235 due to mathematical extrapolation of the TLS bank scan below the waterline. For our analysis, this camera record was converted to approximate WSE by arbitrarily assigning the WSE of the CF Bubbler record to the camera record on a day of zero-flow.

Because all sensors experienced occasional data gaps, a hybrid stage product for the Minturn River was created to infill missing  
240 data (Fig. 5). The CF Bubbler transducer, in particular, becomes exposed to the air at water surface elevations less than  $\sim 316$  m ( $\sim 316.5$  m following its  $\sim 0.5$  m offset on July 29, 2021), with measurements from other sensors able to record lower stages. From 2019 to 2020, bank-mounted laser rangefinder M1 had the most measurements after the CF Bubbler and the two records were fit with a robust linear model (hybrid stage =  $1.0647 * M1 - 20.5938$  m supply formula and  $R^2 = 0.9651$ ) with outliers greater than  $\pm 0.25$  m from the trendline removed. Beginning June 16, 2021, the additional vented Level TROLL PT provided  
245 an additional dataset with higher accuracy than the bank-mounted laser rangefinder. These hourly measurements were interpolated to 15-min measurements by fitting the Level TROLL PT record with a linear model to predict the CF Bubbler data (hybrid stage =  $0.9515 * PT + 15.323$  m supply formula and  $R^2 = 0.9981$ ). The bank-mounted laser rangefinder data were no longer included in the hybrid stage product after the vented Level TROLL PT was installed, as the latter is more accurate. The final hybrid river stage product therefore uses the CF Bubbler data when available, with gaps filled with a linear regression  
250 model based on either Level TROLL PT or laser rangefinder M1 measurements as available.

## 2.6 Statistical comparisons

For quality assessment of the various experimental methods used to estimate Minturn River stage, statistical intercomparisons were performed by calculating the  $R^2$  and RMSE values of the traditional CF Bubbler vented PT with all other records (i.e. the two bank-mounted laser rangefinders, the Level TROLL PT, the time-lapse camera estimates of Goldstein et al. (in review),





255 and the hybrid product). For a preliminary scientific assessment of some potential physical drivers of Minturn River stage  
variations, a multivariate linear regression model was developed to assess the relationship of each AWS meteorological  
variable to the hybrid stage product. Correlation coefficients and pairwise plots were also produced for each variable available  
from the met station and remote sensing data sets. In these correlation analyses, AWS air temperature and remotely sensed  
precipitation, each lagged by 0, 1, and 2 days, were considered and net radiation was calculated as the difference of downward  
and upward radiation. To remove high diurnal variance, all predictor variables and the hybrid river stage product were averaged  
260 to daily timesteps. Any significant, independent variables found were then used as predictor variables in a multivariate linear  
regression mode. These independent variables, albedo over the ice sheet and 1-day lagged air temperature, were used as  
predictors in a multivariate linear regression model predicting hybrid stage. Coefficients and p-values were computed for each  
predictor and an ANOVA test was performed on each selected variable to assess differences in means between early melt  
265 season (~day of year 190 to 205) for each year (2019, 2020, 2021).

### 3 Results

#### 3.1 Minturn River, Inglefield Land

Proglacial river stage measurements for the Minturn River were acquired by the CF Bubbler vented PT (15 min), bank-mounted  
laser rangefinder units (hourly), and time-lapse cameras (Goldstein, et al.) (3 hours) in 2019, 2020, and 2021; and by the Level  
270 TROLL vented PT (hourly) in 2021 (Fig. 5). In total, data were collected between July 15, 2019 and September 12, 2021 with  
prolonged winter shutdown gaps in the CF Bubbler and bank-mounted laser rangefinder units from approximately October 23,  
2019 to June 6, 2020 and October 16, 2020 to June 14, 2021. After quality-assurance and filtering (see Data Processing), a  
total of 9,120 (15-min) CF Bubbler stage measurements, 3,093 (hourly) Level TROLL PT stage measurements, 6,461 (hourly)  
bank-mounted laser rangefinder M1 stage measurements, 3,608 (hourly) bank-mounted laser rangefinder M2 measurements,  
275 and 1,618 (3 hour) time-lapse camera images (Goldstein et al., in review) were acquired for the Minturn River over the three  
meltwater runoff seasons.

The AWS meteorological station installed at the Minturn River collected relative humidity (28,900 measurements), relative  
snow depth (18,707 measurements), wind direction (27,634 measurements) and speed (27,669 measurements), upward (29,212  
280 measurements) and downward (29,214 measurements) solar radiation, air pressure (25,223 measurements), and two measures  
of air temperature (29,213 measurements from each) at 15-minute increments from July 8, 2019 to September 12, 2021, with  
winter gaps from September 2, 2019 to June 21, 2020 and December 15, 2020 to June 12, 2021.

#### 3.2 North and Fox Canyon River, Thule AB

For the North River at Thule AB, river stage measurements were recorded from 2019 to 2021 with two non-vented Levellogger  
285 PTs and one bank-mounted laser rangefinder, and with a Level TROLL vented PT beginning in 2021. The longest Levellogger



PT record was retrieved in June 2022 and had collected 47,692 stage measurements from July 17, 2019 to May 22, 2021 with a cold-season gap between October 5, 2019 and April 1, 2020 and no gap in the more complete Levellogger PT record during winter 2020/2021. The PT record with no gap in the winter 2020/2021 was used for this analysis. The bank-mounted laser rangefinder N1 collected 8,696 stage measurements between June 15, 2019 and October 25, 2021 with winter gaps from  
290 October 20, 2019 to June 16, 2020 and October 1, 2020 to April 28, 2021. The transmitting vented Level TROLL PT operated from June 7, 2021 to October 25, 2021 and collected 2,919 measurements.

For the Fox Canyon River near Thule AB, 8,348 river stage estimates were acquired from bank-mounted laser rangefinder F1 between July 15, 2019 and October 31, 2021 with winter gaps from October 29, 2019 to June 29, 2020 and October 20, 2020  
295 to June 7, 2021.

### 3.3 Sensor performances

Coefficient of determination ( $R^2$ ) and root-mean square error (RMSE) values computed between the gold-standard CF Bubbler vented pressure transducer stage record and each of the instruments installed at the Minturn River show strong correlations (Table 1). The  $R^2$  values were 0.809, 0.739, 0.996, and 0.702, respectively, for bank-mounted laser rangefinder M1, bank-  
300 mounted laser rangefinder M2, the vented PT, and the hybrid product, respectively. Corresponding RMSE values were 0.256 m, 0.251 m, 0.050 m, and 0.502 m, respectively.

Each stage measurement technology (CF Bubbler, Level TROLL PT, bank-mounted laser rangefinder, camera) had different strengths and weaknesses (Table 1). The CF Bubbler had the finest temporal resolution (15 min) and, as the technology is  
305 considered the gold standard for river stage measurement ( $\pm 0.003\text{m}$ ) (Compact Constant Flow Bubbler, 2022) its measurements were used as the study benchmark. However, the CF Bubbler installed in the Minturn River in 2019 was not submerged deeply enough to record low stages, and the instrument also missed readings at higher stages more frequently than other measurement technologies. The Level TROLL PT (RMSE = 0.050m with the CF Bubbler) took lower temporal resolution measurements (hourly) and was not established until 2021, but recorded lower stages and had fewer data gaps than the CF  
310 Bubbler (74.5% vs. 49.1% at an hourly timestep). The bank-mounted laser rangefinder units took hourly readings that aligned well with both the CF Bubbler and Level TROLL PT measurements (RMSE with the CF Bubbler: M1 = 0.256m, M2 = 0.251m). These non-contact units were safer, easier to install, and less expensive than the traditional vented PTs, but solar interference occasionally caused anomalous offsets or gaps in the records (data completeness for M1 = 77.1%, M2 = 33.9% at an hourly timestep). The time-lapse camera record matched the upward and downward movements of the CF Bubbler stage  
315 well, but had a substantially greater daily diurnal range producing yielding the greatest RMSE of the approaches studied (RMSE = 0.502m) and suspect quality at stage values in the lowest ~75% (Goldstein, et al., in review). The cameras also only took measurements every three hours and experienced interruptions during some adverse weather conditions (e.g. rain on the lens) of interest for stage measurement. However, the cameras were inexpensive, simple to install, experienced few data gaps



(data completeness at 3-hour time step = 89.7%), and provided useful awareness of environmental conditions including river  
320 ice, snow, and rain.

As the instruments powered off during the cold season, data gaps were assessed during summer when all instruments were  
powered on and recording data. This period was taken to start at the first timestep in which all instruments had acquired at  
least one measurement, and to end on last day of stage variation (due to either ice formation or desiccation of the channel) for  
325 the winter. These dates span July 15 to September 7, 2019, June 22 to September 3, 2020, and June 15 to August 29, 2021. As  
laser rangefinder M2 at Minturn River did not power on until July 6, 2021 – 20 days after the all other instruments had turned  
on, the start of this season was taken as the first day in which all other instruments had begun recording (June 15, 2021). The  
Level TROLL vented PT record was only available in 2021 so its statistics were computed from 2021 data only. Data  
completeness was calculated as the ratio of number of measurements to the number of 15 min (CF Bubbler), hourly (bank-  
330 mounted laser rangefinder, vented PT), or 3-hourly (camera) time periods between the start and end times each year. From  
these calculations, the time-lapse camera yielded the most complete data record (89.7%) whereas laser rangefinder M2 and the  
CF Bubbler yielded the least complete records (33.9% and 44.4%, respectively) (Table 1).

The described differences in sensor data record completeness and accuracy encouraged the development of a hybrid product  
335 offering a more complete time-series than any individual record (Fig. 5). This hybrid product, which merges stage estimates  
from the CF Bubbler, bank-mounted laser rangefinder (2019 and 2020), and vented Level TROLL PT (2021), the most  
complete and most accurate product, compared to the CF Bubbler standard (Table 1). As the CF Bubbler measurements were  
used whenever they were available, the hybrid and bubbler record matched exactly at all timesteps with bubbler records  
available. Overall, the hybrid product yielded the record with the fewest gaps at the 15 min timescale (57.1%), hourly (89.1%),  
340 or daily (99.0%) timescales. River stage from all instruments are presented for the Minturn River, North River, and Fox Canyon  
River in Figs. 5, 6, and 7, respectively.

### 3.4 Watershed characterization

The acquired stage records from the Minturn River, North River, and Fox Canyon River allow a preliminary assessment of  
345 runoff characteristics in the Inglefield Land and Thule regions. Weather conditions were relatively similar between years, with  
air temperatures reaching highs of ~15 °C in July and declining thereafter, aligning with the July peak and subsequent decline  
in net solar radiation (Fig. 8). At all sites, river levels were high in early summer 2019 and 2020, but decreased throughout the  
summer and ceased flowing by September. In 2019 and 2020 the diurnal cycle was well developed by July, suggesting runoff  
from bare ice. This was not the case in 2021, when July diurnal cycles were suppressed at all three sites. In all years, late-  
350 season rain events, as verified with camera images and decreased downward solar irradiance, triggered some sharp, late-season

floods in the Minturn River (Fig. 5, 2019 and 2020), North River (Fig. 6, 2019 and 2020), and Fox Canyon River (Fig. 7, 2019).

After applying a conservative Bonferroni correction, only air temperature (at all lag steps) and ice sheet albedo were significantly correlated with the hybrid stage. The strongest predictor (lag = 1 day) from the correlated group of air temperature variables was selected, yielding ablation zone albedo and 1-day lagged air temperature as the independent predictors included in the multivariate linear regression model for hybrid stage prediction. P-values for correlation with stage were  $4.06 \times 10^{-20}$  and  $1.20 \times 10^{-6}$  for 1-day lagged air temperature and albedo, respectively. Correlation coefficients with stage were 0.090 for 1-day lagged air temperature and -0.025 for albedo. An analysis of variance test on the yearly temperature, albedo, and stage data from day 189 (the first day records are available in all years) to day 205 (the latest onset of a pronounced diurnal signal) indicates that the p-value of difference in means between years is  $1.17 \times 10^{-8}$  for temperature,  $4.70 \times 10^{-4}$  for albedo, and  $2.48 \times 10^{-15}$  for stage. Regressions of hybrid stage with net radiation, remotely sensed precipitation at 0 to 2 day lags, and snow cover showed little to no independent correlation (p-values 0.006-0.411). Late June temperature and albedo indicate significantly cooler temperatures (11.2 and 10.1°C in 2019 and 2020, 6.3°C in 2021), a more reflective ablation zone surface (0.64 and 0.65 in 2019 and 2020, 0.75 in 2021), and lower river stages (317.2m and 316.9m in 2019 and 2020, 315.7m in 2021) in 2021 than either previous year.

#### 4 Discussion

Our experimental new gauging stations established for the proglacial Minturn River, North River, and Fox Canyon Rivers provide rare in situ hydrological observations from NW Greenland, an area uniquely advantaged for GrIS surface runoff studies because meltwater transport is fully supraglacial in this area with little or no interference from en- or sub-glacial processes. While submerged, the vented CF Bubbler and Level TROLL PTs functioned well in this harsh environment, and four experimental, non-contact, bank-mounted laser sensors tested here compare favorably in accuracy and reliability ( $R^2=0.806$  and 0.932, for the Minturn River and North River, respectively, Table 1, Fig. 5). Time-lapse cameras are least accurate and require significant rectification expertise to estimate river stage (Goldstein, et al.). Having said that, the cameras acquired the most complete record of river stage and also valuable images of environmental conditions. Overall, bank-mounted laser rangefinders offer a straightforward, sufficiently accurate replacement for vented PTs in harsh Arctic environments.

All instruments presented different strengths and weaknesses. It was determined that the CF Bubbler was the most reliable instrument when measurements were available. However, it experienced data gaps during low flows and required specialized expertise and safety measures to install it in frigid, fast-flowing water. A vented Level TROLL PT performed similarly to the CF Bubbler in terms of accuracy, but similarly required expert installation and safety measures. All immersed PTs are vulnerable to damage from river ice and rolling rocks. Bank-mounted laser rangefinders were easier to install and provided



relatively accurate stage, but suffered some anomalies and outliers requiring correction or removal. The time lapse cameras  
obtained measurements only every 3 hours (vs. 15 minutes for vented PTs) and required more data postprocessing to extract  
385 river stage. Combining these various sensor records through linear regression provided a hybrid time-series of river stage with  
fewest data gaps.

While our installation of three proglacial river gauging stations significantly advances in situ hydrological monitoring of NW  
Greenland, we experienced numerous technical and logistical challenges. Submerged sensors, in particular, remain vulnerable  
390 to damage. The AWS was battery-power limited while the bank-mounted laser rangefinder devices were limited by datalogger  
date retention. The bank-mounted laser rangefinders were programmed to enter sleep mode from October 31 to April 1, but an  
error in the datalogger program resulted in a failure to properly retain the current date in the memory which prevented the  
datalogger from waking up in April 2020 and 2021. Due to COVID-19 pandemic travel bans, these issues require virtual  
training and emergency and service visits from Greenland-based collaborators. Installing multiple sensor technologies for  
395 river stage measurements provided increased resilience to these challenges, and the opportunity to create a hybrid stage product  
as demonstrated here. All repairs have been completed and all sensors are currently functional and transmitting data to the  
PROMICE website at this time.

Statistical analysis of our hybrid river stage product and AWS meteorological variables indicate that Minturn River flows are  
400 driven primarily by changes in air temperature and albedo. In Inglefield Land, 1-day lagged air temperature was the strongest  
predictor of increased stage ( $R=0.79$ ), followed closely by ice sheet albedo ( $R=-0.78$ ). We therefore attribute lower proglacial  
river stages observed in 2021 to cooler air temperature and higher ice sheet albedo in the early part of the melt season. In the  
late runoff season, rainfall-induced floods occurred at all sites, confirmed by the presence of rain in the time lapse camera  
images and increased stage in the Minturn River. These findings affirm the influence of rainfall/melt events in NW Greenland,  
405 as previously demonstrated for SW Greenland by Doyle et al., 2015 (Doyle et al., 2015).

## Conclusion

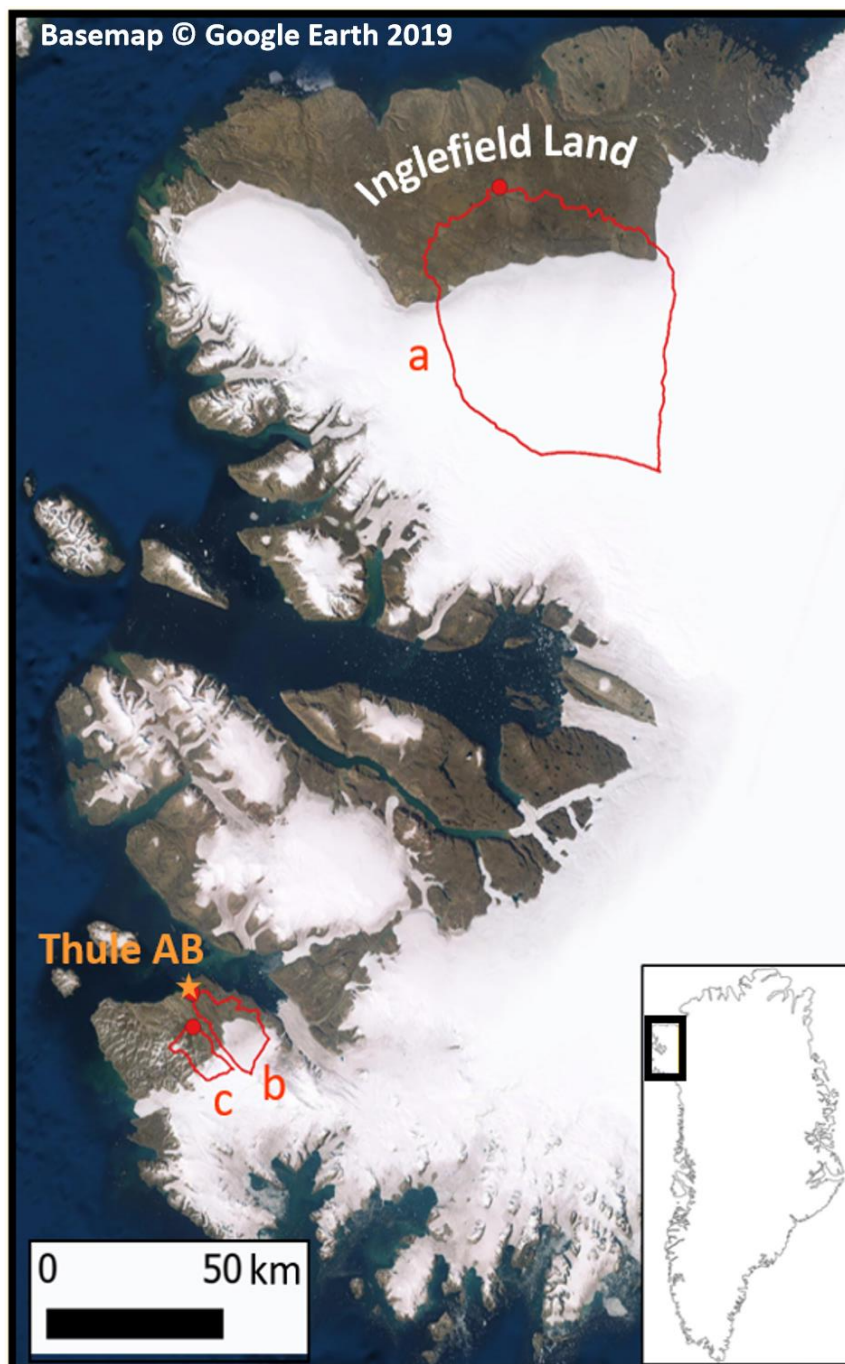
We have established three new proglacial river gauging stations and one automated weather station in the NW Greenland  
region. The new stations provide valuable in situ observations for characterizing the timing and drivers of GrIS runoff and  
testing SMB models used to predict ocean-going ice mass loss from an understudied, rapidly changing area. Instruments  
410 installed at the Minturn River, Inglefield Land consist of a conventional vented pressure transducer, a bubbler sensor, and two  
experimental bank-mounted laser rangefinders to estimate stage, two time-lapse cameras to image environmental conditions  
and estimate stage, and an automated weather station to record meteorological variables (upward/downward radiation, air  
pressure, air temperature, relative humidity, wind speed, wind direction). At the North River, Thule AB, instruments consist  
of one conventional vented pressure transducer, one experimental bank-mounted laser rangefinder, and two non-vented



415 pressure transducers to measure stage. At Fox Canyon River, near Thule AB, there is a bank-mounted laser rangefinder to  
estimate stage. Water surface elevations at all sites are referenced to benchmarks established by this project in 2019. All  
instruments provided reasonably accurate, useful observations of river stage. Telemetry of these data was successful from all  
sites despite harsh environmental conditions. Redundant measurements from a suite of instruments with differing strengths  
and weaknesses enabled creation of a hybrid river stage product for the Minturn River with minimal data gaps. Air temperature  
420 and ice ablation zone albedo are strongly correlated with this product, providing insight into leading drivers of proglacial runoff  
in NW Greenland. All datasets are maintained and freely available through the PROMICE observational network (PROMICE,  
2022).

### **Code and data availability**

Inglefield data are available through the PROMICE network (station: ING\_1). All data from all stations and corresponding  
425 code will be publicly released through Zenodo following the acceptance of this manuscript.



430

Figure 1: New river stage measurements are available for three glacial/proglacial watersheds in NW Greenland: (a) Minturn River; (b) North River; and (c) Fox Canyon River. Instrument installations were established at  $(78.590801^\circ, -68.992706^\circ)$ ,  $(76.538980^\circ, -68.728190^\circ)$ , and  $(76.466460^\circ, -68.579060^\circ)$ , respectively, in July 2019 (red dots). The most comprehensive suite of sensors, including an automated weather station (AWS), is installed at the Minturn River, Inglefield Land (a). Basemap © Google Earth 2019.



435



440

**Figure 2. GrIS runoff in Inglefield Land is routed entirely over the ice sheet surface through long, semi-parallel supraglacial streams directly onto the bedrock-dominant proglacial zone, making it an ideal location to study surface mass balance (SMB) runoff without interference from en- or sub-glacial processes. The absence of bedload and suspended sediment in the Minturn River at the ice margin further affirms the primacy of supraglacial runoff at this site (photo by Laurence C. Smith).**



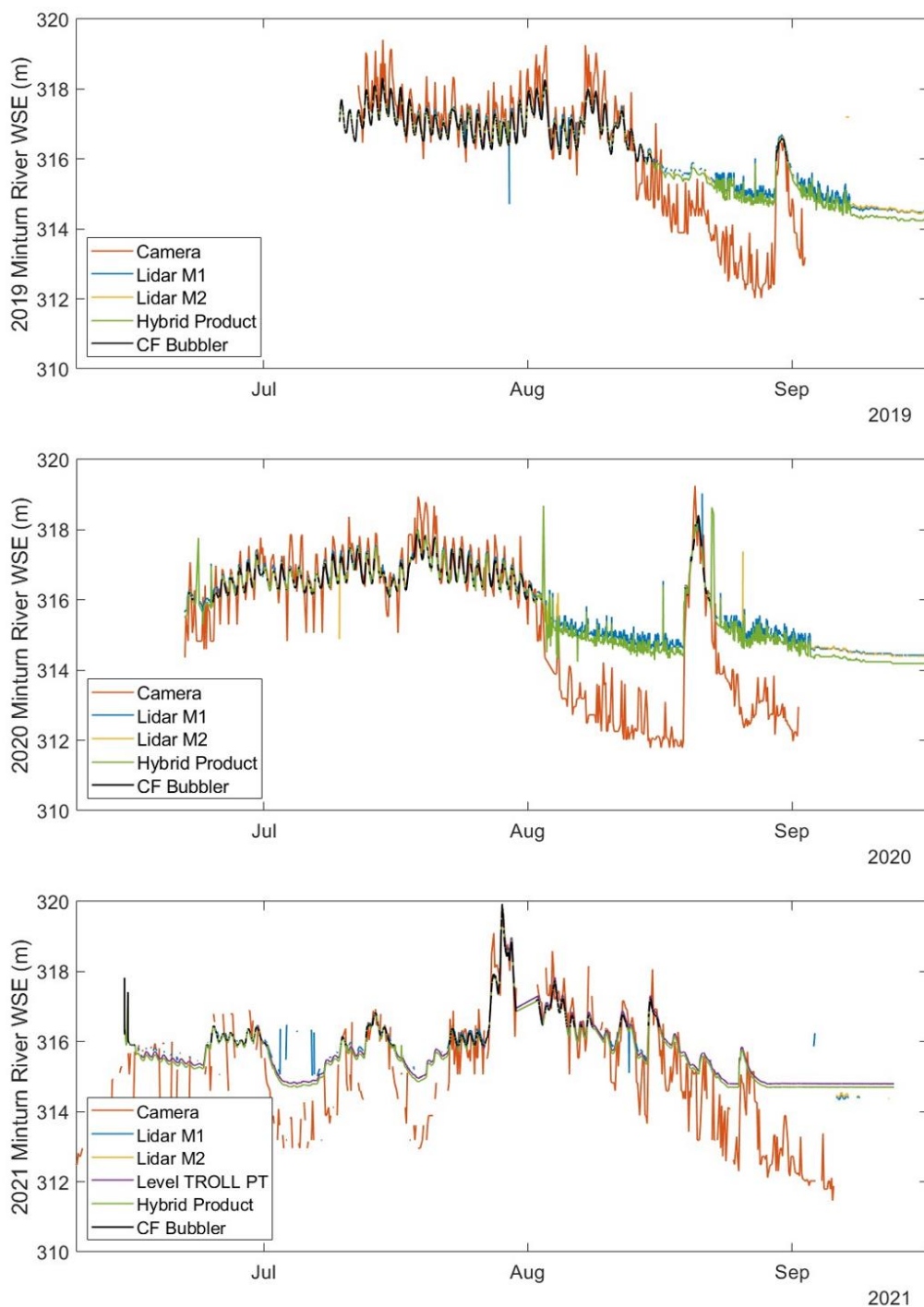


445 **Figure 3: Bank-mounted, oblique-looking Laser rangefinder recording river stage on the right bank of the North River, Thule AB. In total, four identical Laser rangefinder units were built and installed in NW Greenland, with two at the Minturn River (Inglefield Land), one at the North River (Thule AB), and one at Fox Canyon River (Thule AB). The single-shot Laser rangefinder measures distance between the sensor and water surface using time-of-flight of the emitted and reflected beam. This novel approach to river stage measurement avoids contact with water, reducing risk of sensor damage or loss from ice, rolling cobbles, and spring breakup floods (photo by Lincoln Pitcher).**



450

**Figure 4: Automated weather station and CF Bubbler vented pressure transducer (at left) and a time-lapse camera (at right) established at the Minturn River. Other instruments at this site include two bank-mounted laser rangefinders, a second vented PT, and a second time-lapse camera on the opposite bank (photo by Lincoln Pitcher).**

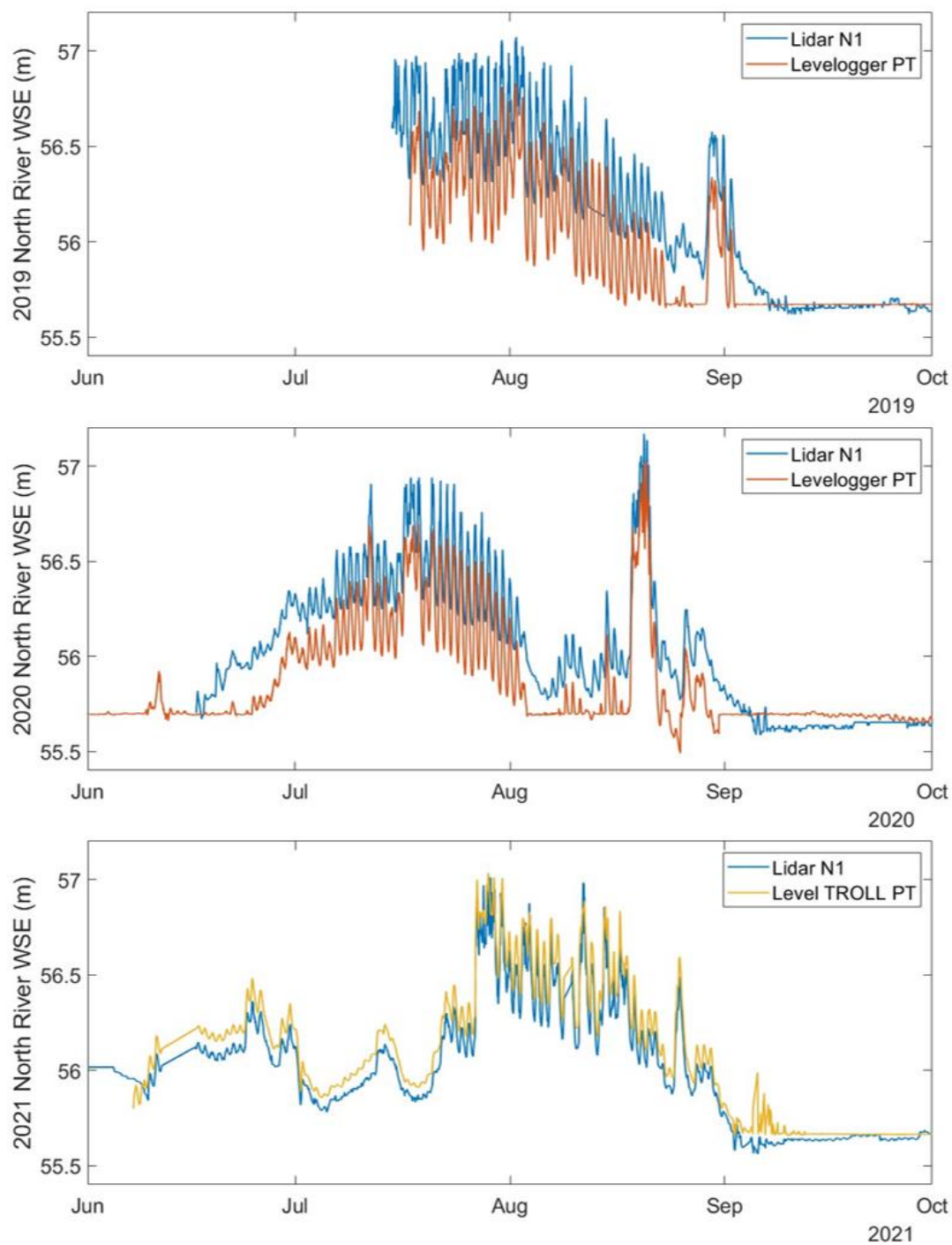


455

**Figure 5: Hydrographs of stage at the Minturn River (a) were produced by two bank-mounted laser rangefinder devices, the CF Bubbler, and a hybrid product combination of the two from 2019 through 2021. In 2021, an additional vented Level TROLL PT**

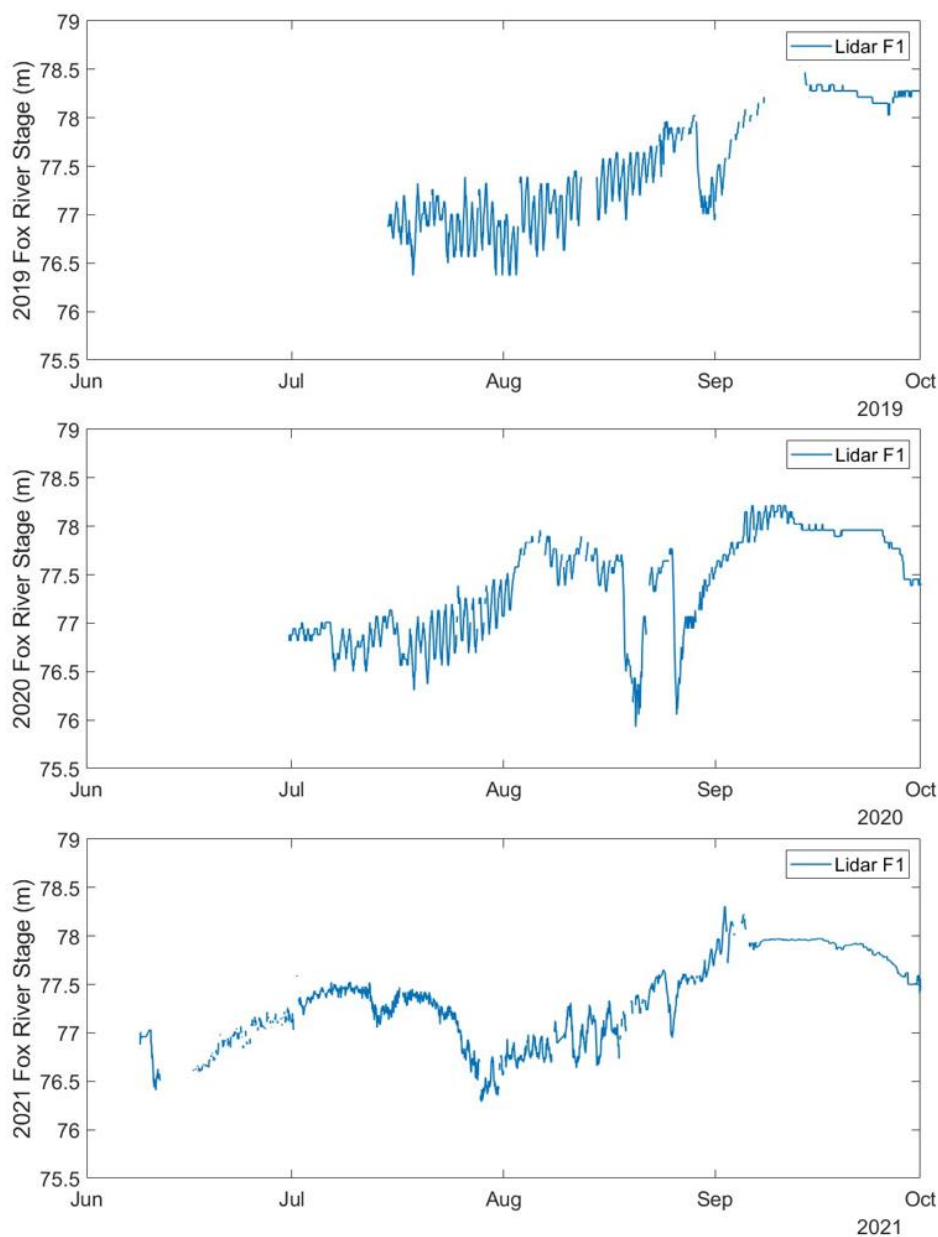


460 was added at the Minturn River providing another record of stage. The CF Bubbler record is the gold standard for accuracy but does not capture low stages, while the lower temporal resolution, more novel laser rangefinder record may have lower accuracy. A hybrid product fit a linear model to the CF Bubbler and the bank-mounted laser rangefinder with fewer data gaps to produce the most complete record. Stage values from the lowest ~75% of the riverbank contain uncertainty due to mathematical extrapolation of the TLS bank scan below the waterline.



465

**Figure 6. Records of stage at the North River are available from bank-mounted laser rangefinder units, with an additional record of stage available from the non-vented Levelogger (2019 to 2020) and vented Level TROLL (2021) PTs.**



470 **Figure 7.** Stage records from 2019 to 2021 at the Fox Canyon River are available from a bank mounted laser rangefinder unit.

**Table 1.** Coefficients of determination ( $R^2$ ) and root-mean-square-errors (RMSE) of different river stage sensors relative to the CF Bubbler vented pressure transducer record (considered the gold standard for stage accuracy,  $\pm 0.003\text{m}$ ).<sup>20</sup> Sensor pros/cons are also summarized. The time-lapse camera missed the fewest measurements (89.7% of scheduled measurements produced a stage value).

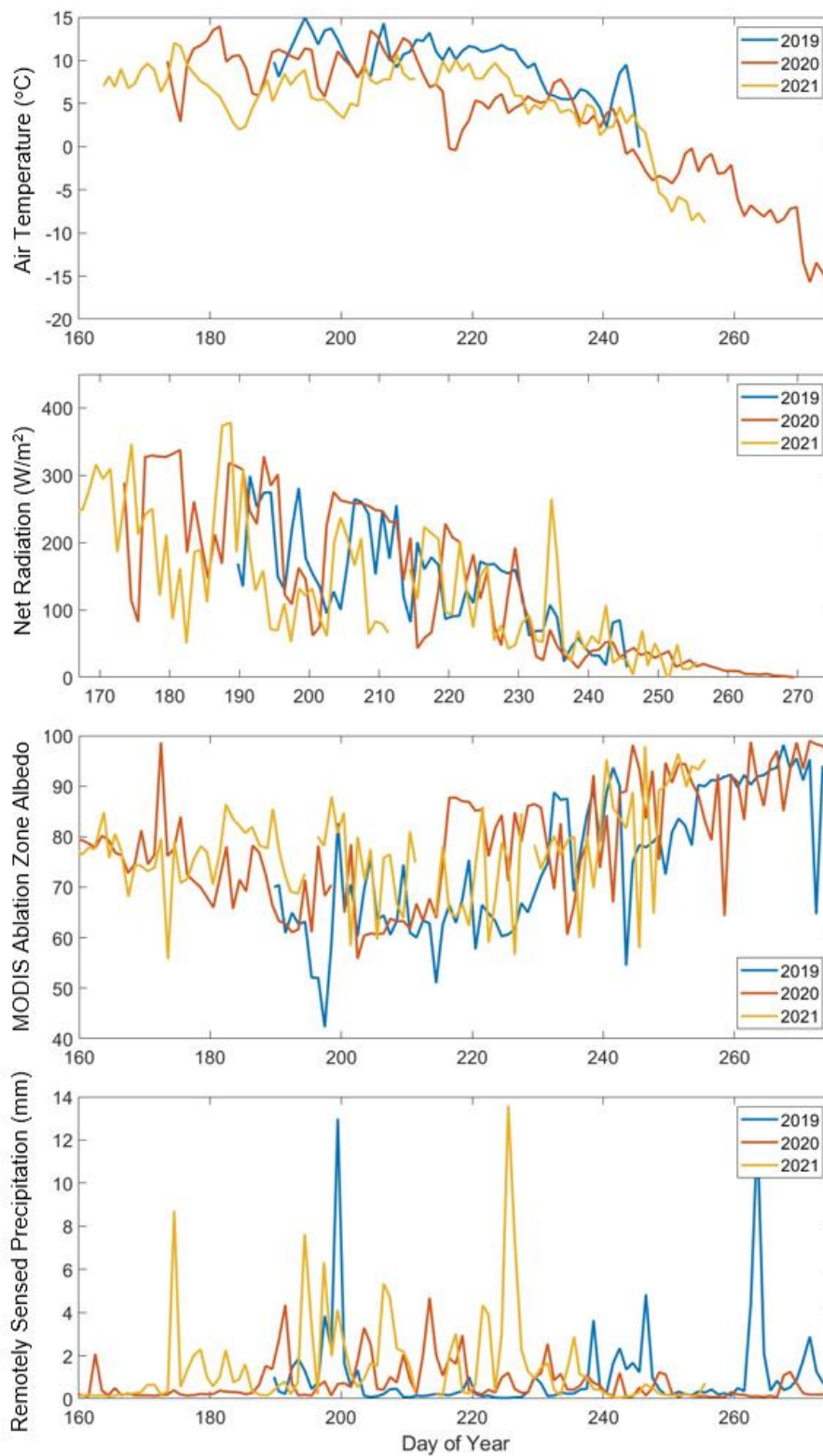
475 **However,** this camera record accuracy was lowest of all instruments (RMSE = 0.502 m) as the diurnal range of values was greater



than for other instruments. A hybrid data product produced from the CF Bubbler and bank-mounted laser rangefinder or vented Level TROLL PT had the highest accuracy and most complete record at the 15-min interval (57.1%).

Dataset (measurement timestep)	R <sup>2</sup> with CF Bubbler	RMSE with CF Bubbler (m)	Data completeness (instrument timestep)	Data completeness			Pros	Cons
				15- min	Hour	Day		
CF Bubbler (15 min)	N/A	N/A	44.4%	44.4%	49.1%	56.6%	Highly accurate, well established technology	Some data intermittency, requires expert installation, contact method susceptible to river ice damage
Bank-mounted laser rangefinder (1 hr)	M1: 0.809	M1: 0.256	M1: 77.1%	M1: 19.3%	M1: 77.1%	M1: 98.5%	Moderately accurate, non-contact method, simpler installation	Anomalies when sun is low, some data intermittency
	M2: 0.739	M2: 0.251	M2: 33.9%	M2: 8.5%	M2: 33.9%	M2: 62.9%		
Vented Level TROLL Pressure Transducer (1 hr)	0.996	0.050	74.5%	18.6%	74.5%	96.1%	Highly accurate, well established technology	Requires expert installation, contact method susceptible to river ice damage
Time-lapse camera (3 hr)	0.702	0.502	89.7%	7.5%	27.2%	95.6%	Non-contact method, few data gaps, simplest installation	Lower accuracy (especially in diurnal range and below TLS waterline), lower temporal resolution (3 hr), gaps during some inclement weather periods
Hybrid Product (15 min)	1.000*	0.000*	57.1%	57.1%	89.1%	99.0%	Most complete stage record	Derivative, multi-sensor product with variable accuracy depending on sensor

480 \*Note: Hybrid stage product uses CF Bubbler data when it is available, so these records match perfectly and are assumed to yield no error beyond the nominal sensor accuracy ( $\pm 0.003\text{m}$ ).<sup>20</sup>



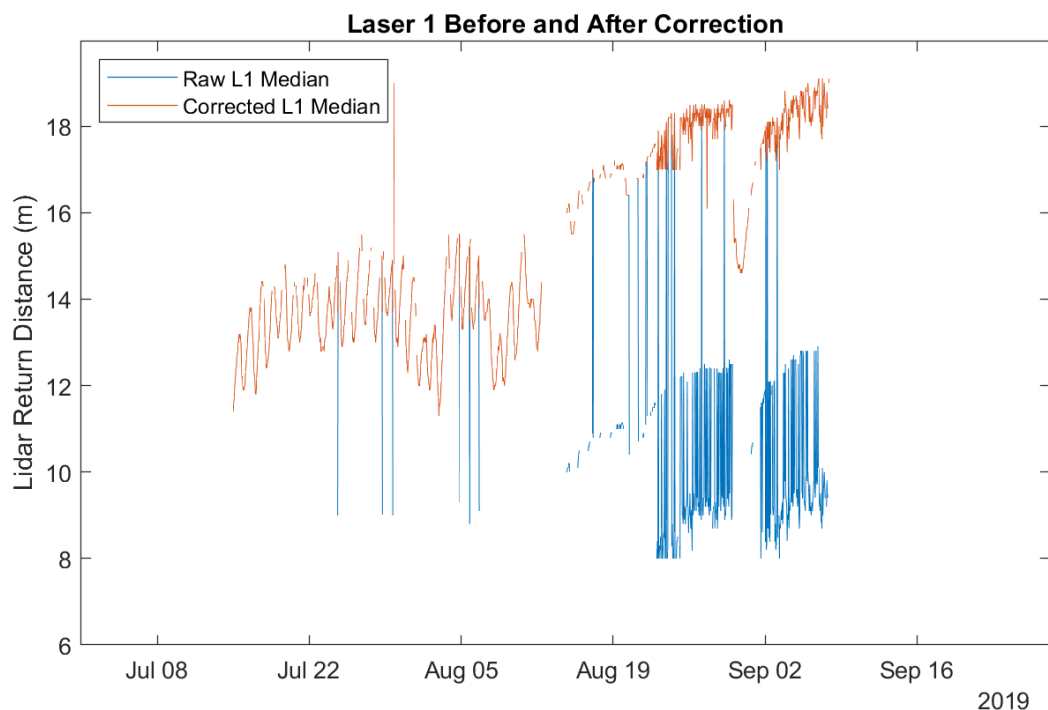




485 **Figure 8. Daily-averaged a) air temperature and b) net radiation from the Minturn River automated weather station**  
**for d.o.y. 160 - 275.**  
495 **and remotely sensed c) ice ablation zone albedo and d) precipitation from MODIS and IMERG, respectively**

## Appendix A

Anomalous, internally consistent offsets occurred in some laser rangefinder returns between August and September of all  
490 years. In the late summer, data values were offset below the main trendline, especially between approximately 12:00pm and  
12:00am, by one of two values (Fig. A1). These two offset values (-6.00m and -9.00m) were approximately constant across  
lasers at all locations, and the consistency of the offset timing suggests that the anomaly is a product of solar interference with  
the laser range finder. This explanation is corroborated by camera images of the Minturn River taken every three hours which  
show strong glint on the water during the pm hours in the late summer. As some values recorded between 12:00am and  
495 12:00pm aligned with the trendline before and after the period when the anomalies were present, this subset of the data series  
was taken as true values. This data series was corrected by adding one of these two constant offset values to the falsely low  
values (Fig. A1).





500 **Figure A1. Two anomalous, consistent offsets were observed in in the laser rangefinder returns between August and**  
**September of both 2019 and 2020, creating an upper (primary), middle, and lower trendline in the raw (blue) data. The**  
**consistency of these offsets across lasers at different locations, the presence of the offsets in only the pm hours of the**  
**late summer, and camera images indicating strong glint off the Minturn River during these readings suggest that solar**  
**interference with the laser range finder was the source of the anomalies. As both offsets adjusted the data by a constant**  
505 **value below the primary trendline, the data were corrected by adding one of two constant values (9.00m for the lower**  
**offset, 6.00m for the upper offset) to the anomalous data to produce the corrected (red) record. Similar corrections**  
**were performed for all bank-mounted laser rangefinder records.**

### Author contribution

S.E. Esenther cleaned the data, designed and carried out the analyses. L.C. Smith obtained funding and conceived and designed  
510 the study with major contributions from A. LeWinter and L.H. Pitcher. A. LeWinter, L.H. Pitcher, B.T. Overstreet, and C.  
Onclin carried out the fieldwork. A. LeWinter and A. Kehl designed the instruments and oversaw data telemetry and release  
through PROMICE. S. Goldstein and J.C. Ryan extracted stage records from the time lapse camera record. S.E. Esenther  
prepared the manuscript with contributions from all co-authors.

### Competing interests

515 The authors declare that they have no conflict of interest

### Acknowledgements

This research was funded by the NASA Cryospheric Sciences program (grant #80NSSC19K0942), managed by Dr. Thorsten  
Markus. We gratefully acknowledge Crane Johnson at NOAA for his single beam rangefinder designs, code, and guidance,  
and ASIAQ – Greenland Survey and Vectrus for facilitating service visits during pandemic travel restrictions.

### 520 References

- Alther, G. R., Ruedisili, L. C., Stauber, H., and Kollbrunner, C. F.: Glacial melt water in Greenland: a renewable resource for  
the future, *Int. J. Energy Res.*; (United Kingdom), 5, <https://doi.org/10.1002/er.4440050207>, 1981.
- Andersen, M. L., Stenseng, L., Skourup, H., Colgan, W., Khan, S. A., Kristensen, S. S., Andersen, S. B., Box, J. E., Ahlstrøm,  
A. P., Fettweis, X., and Forsberg, R.: Basin-scale partitioning of Greenland ice sheet mass balance components (2007–2011),  
525 *Earth and Planetary Science Letters*, 409, 89–95, <https://doi.org/10.1016/j.epsl.2014.10.015>, 2015.
- GPM IMERG Final Precipitation L3 1 day 0.1 degree x 0.1 degree V06 (GPM\_3IMERGDF) at GES DISC, 2019.



- MODIS/Terra Snow Cover Daily L3 Global 500m SIN Grid, Version 6. *National Snow and Ice Data Center*  
<https://nsidc.org/data/mod10a1/versions/6>, last access: 16 January 2023.
- PROMICE. “Interactive map of automatic weather stations,” The Danish Energy Agency DANCEA programme and GEUS.  
530 <https://promice.org/weather-stations/>, last access: 1 November 2022.
- Bandini, F., Frías, M. C., Liu, J., Simkus, K., Karagiolidou, S., and Bauer-Gottwein, P.: Challenges with Regard to Unmanned Aerial Systems (UASs) Measurement of River Surface Velocity Using Doppler Radar, *Remote Sensing*, 14, 1277, <https://doi.org/10.3390/rs14051277>, 2022.
- Cooper, M. G., Smith, L. C., Rennermalm, A. K., Miège, C., Pitcher, L. H., Ryan, J. C., Yang, K., and Cooley, S. W.: Meltwater  
535 storage in low-density near-surface bare ice in the Greenland ice sheet ablation zone, *The Cryosphere*, 12, 955–970, <https://doi.org/10.5194/tc-12-955-2018>, 2018.
- Doyle, S. H., Hubbard, A., van de Wal, R. S. W., Box, J. E., van As, D., Scharrer, K., Meierbachtol, T. W., Smeets, P. C. J. P., Harper, J. T., Johansson, E., Mottram, R. H., Mikkelsen, A. B., Wilhelms, F., Patton, H., Christoffersen, P., and Hubbard, B.: Amplified melt and flow of the Greenland ice sheet driven by late-summer cyclonic rainfall, *Nature Geosci*, 8, 647–653,  
540 <https://doi.org/10.1038/ngeo2482>, 2015.
- Enderlin, E. M., Howat, I. M., Jeong, S., Noh, M.-J., van Angelen, J. H., and van den Broeke, M. R.: An improved mass budget for the Greenland ice sheet, *Geophysical Research Letters*, 41, 866–872, <https://doi.org/10.1002/2013GL059010>, 2014.
- Gagliardini, O and Werder, MA (2018) Influence of increasing surface melt over decadal timescales on land-terminating Greenland-type outlet glaciers. *Journal of Glaciology* 64(247), 700–710. doi: 10.1017/jog.2018.59.
- Instanes, A., Kokorev, V., Janowicz, R., Bruland, O., Sand, K., and Prowse, T.: Changes to freshwater systems affecting Arctic infrastructure and natural resources, *Journal of Geophysical Research: Biogeosciences*, 120, <https://doi.org/10.1002/2015JG003125>, 2015.
- Lenaerts, J. T. M., Le Bars, D., van Kampenhout, L., Vizcaino, M., Enderlin, E. M., and van den Broeke, M. R.: Representing Greenland ice sheet freshwater fluxes in climate models, *Geophysical Research Letters*, 42, 6373–6381,  
550 <https://doi.org/10.1002/2015GL064738>, 2015.
- Li, Y., Yang, K., Gao, S., Smith, L.C., Fettweis, X., Li, M. (2022) Surface meltwater runoff routing through a coupled supraglacial-proglacial drainage system, Inglefield Land, northwest Greenland. *International Journal of Applied Earth Observation and Geoinformation* 106, 102647, <https://doi.org/10.1016/j.jag.2021.102647>



- Mernild, S. H., Liston, G. E., Hiemstra, C. A., Christensen, J. H., Stendel, M., and Hasholt, B.: Surface Mass Balance and  
555 Runoff Modeling Using HIRHAM4 RCM at Kangerlussuaq (Søndre Strømfjord), West Greenland, 1950–2080, *Journal of Climate*, 24, 609–623, 2011.
- Mernild, S. H., Liston, G. E., van As, D., Hasholt, B., and Yde, J. C.: High-resolution ice sheet surface mass-balance and  
spatiotemporal runoff simulations: Kangerlussuaq, west Greenland, Arctic, Antarctic, and Alpine Research, 50, S100008,  
<https://doi.org/10.1080/15230430.2017.1415856>, 2018.
- 560 Mottram, R., Simonsen, S. B., Svendsen, S. H., Barletta, V. R., Sørensen, L. S., Nagler, T., Wuite, J., Groh, A., Horwath, M.,  
Rosier, J., Solgaard, A., Hvidberg, C. S., and Forsberg, R.: An Integrated View of Greenland Ice Sheet Mass Changes Based  
on Models and Satellite Observations, *Remote Sensing*, 11, <https://doi.org/10.3390/rs11121407>, 636959808000000000.
- Mouginot, J., Rignot, E., Bjørk, A. A., van den Broeke, M., Millan, R., Morlighem, M., Noël, B., Scheuchl, B., and Wood,  
M.: Forty-six years of Greenland Ice Sheet mass balance from 1972 to 2018, *Proc Natl Acad Sci U S A*, 116, 9239–9244,  
565 <https://doi.org/10.1073/pnas.1904242116>, 2019.
- Muntjewerf, L., Petrini, M., Vizcaino, M., Ernani da Silva, C., Sellevold, R., Scherrenberg, M. D. W., Thayer-Calder, K.,  
Bradley, S. L., Lenaerts, J. T. M., Lipscomb, W. H., and Lofverstrom, M.: Greenland Ice Sheet Contribution to 21st Century  
Sea Level Rise as Simulated by the Coupled CESM2.1-CISM2.1, *Geophysical Research Letters*, 47, e2019GL086836,  
<https://doi.org/10.1029/2019GL086836>, 2020.
- 570 Kipp & Zonen CMP3 Pyranometer: <https://www.otthydromet.com/en/p-kippzonen-cmp3-pyranometer/0338920>, last access:  
16 January 2023.
- Paul, J., Buytaert, W., and Sah, N.: A Technical Evaluation of Lidar-Based Measurement of River Water Levels, *Water  
Resources Research*, 56, e2019WR026810, <https://doi.org/10.1029/2019WR026810>, 2020.
- Shepherd, A., Ivins, E., Rignot, E., Smith, B., van den Broeke, M., Velicogna, I., Whitehouse, P., Briggs, K., Joughin, I.,  
575 Krinner, G., Nowicki, S., Payne, T., Scambos, T., Schlegel, N., A. G., Agosta, C., Ahlstrøm, A., Babonis, G., Barletta, V. R.,  
Bjørk, A. A., Blazquez, A., Bonin, J., Colgan, W., Csatho, B., Cullather, R., Engdahl, M. E., Felikson, D., Fettweis, X.,  
Forsberg, R., Hogg, A. E., Gallee, H., Gardner, A., Gilbert, L., Gourmelen, N., Groh, A., Gunter, B., Hanna, E., Harig, C.,  
Helm, V., Horvath, A., Horwath, M., Khan, S., Kjeldsen, K. K., Konrad, H., Langen, P. L., Lecavalier, B., Loomis, B., Luthcke,  
S., McMillan, M., Melini, D., Mernild, S., Mohajerani, Y., Moore, P., Mottram, R., Mouginot, J., Moyano, G., Muir, A.,  
580 Nagler, T., Nield, G., Nilsson, J., Noël, B., Otsuka, I., Pattle, M. E., Peltier, W. R., Pie, N., Rietbroek, R., Rott, H.,  
Sandberg Sørensen, L., Sasgen, I., Save, H., Scheuchl, B., Schrama, E., Schröder, L., Seo, K.-W., Simonsen, S. B., Slater, T.,  
Spada, G., Sutterley, T., Talpe, M., Tarasov, L., van de Berg, W. J., van der Wal, W., van Wessem, M., Vishwakarma, B. D.,



- Wiese, D., Wilton, D., Wagner, T., Wouters, B., Wuite, J., and The IMBIE Team: Mass balance of the Greenland Ice Sheet from 1992 to 2018, *Nature*, 579, 233–239, <https://doi.org/10.1038/s41586-019-1855-2>, 2020.
- 585 Smith, L. C., Chu, V. W., Yang, K., Gleason, C. J., Pitcher, L. H., Rennermalm, A. K., Legleiter, C. J., Behar, A. E., Overstreet, B. T., Moustafa, S. E., Tedesco, M., Forster, R. R., LeWinter, A. L., Finnegan, D. C., Sheng, Y., and Balog, J.: Efficient meltwater drainage through supraglacial streams and rivers on the southwest Greenland ice sheet, *Proceedings of the National Academy of Sciences*, 112, 1001–1006, <https://doi.org/10.1073/pnas.1413024112>, 2015.
- Smith, L. C., Yang, K., Pitcher, L. H., Overstreet, B. T., Chu, V. W., Rennermalm, Å. K., Ryan, J. C., Cooper, M. G., Gleason, C. J., Tedesco, M., Jeyaratnam, J., van As, D., van den Broeke, M. R., van de Berg, W. J., Noël, B., Langen, P. L., Cullather, R. I., Zhao, B., Willis, M. J., Hubbard, A., Box, J. E., Jenner, B. A., and Behar, A. E.: Direct measurements of meltwater runoff on the Greenland ice sheet surface, *Proceedings of the National Academy of Sciences*, 114, E10622–E10631, <https://doi.org/10.1073/pnas.1707743114>, 2017.
- 590 Smith, L. C., Andrews, L. C., Pitcher, L. H., Overstreet, B. T., Rennermalm, Å. K., Cooper, M. G., Cooley, S. W., Ryan, J. C., Miège, C., Kershner, C., and Simpson, C. E.: Supraglacial River Forcing of Subglacial Water Storage and Diurnal Ice Sheet Motion, *Geophysical Research Letters*, 48, e2020GL091418, <https://doi.org/10.1029/2020GL091418>, 2021.
- Yang, K., and Smith, L.C. (2016), Internally drained catchments dominate supraglacial hydrology of the southwest Greenland Ice Sheet, *J. Geophysical Res. Earth Surf.*, 121, DOI: 10.1002/2016JF003927
- Yang, K., Smith, L.C., Sole, A., Livingstone, S.J., Cheng, X., Chen, Z., Manchun, L. (2019) Supraglacial rivers on the northwest Greenland Ice Sheet, Devon Ice Cap, and Barnes Ice Cap mapped using Sentinel-2 imagery. *International Journal of Applied Earth Observation and Geoinformation*, 78, 1–13, <https://doi.org/10.1016/j.jag.2019.01.008>
- 600 Yang, K., Smith, L.C., Cooper, M.G., Pitcher, L.H., van As, D., Lu, Y., Li, M. Seasonal evolution of supraglacial lakes and rivers on the southwest Greenland Ice Sheet (2021). *J. Glaciology* 67(264), 592-602. <https://doi.org/10.1017/jog.2021.10>
- Compact Constant Flow (CF) Bubbler (2022). Sutron Corporation, <https://www.sutron.com/product/new-compact-constant-flow-cf-bubbler/>, last access: November 1, 2022.
- 605 Wind Speed & Direction Sensor (2022). Sutron Corporation, <https://www.sutron.com/product/wind-speed-direction-sensor/>, last access: November 1, 2022.
- Kipp & Zonen CMP3 Pyranometer. OTT Hydromet (2022), <https://www.otthydromet.com/en/p-kippzonen-cmp3-pyranometer/0338920>, last access: November 1, 2022.



610 Accubar Barometric Pressure Sensor 5600-0120 (2022). Sutron Corporation,  
<https://www.sutron.com/product/accubarbarometric-pressure-sensor-5600-0120/>, last access: November 1, 2022.

Air Temperature Sensor 5600-0020 (2022). Sutron Corporation, <https://www.sutron.com/product/air-temperature-sensor-5600-0020/>, last access: November 1, 2022.

615 AT/RH High Accuracy Sensor (2022). Sutron Corporation, <https://www.sutron.com/product/atrh-high-accuracy-sensor/>, last  
access: November 1, 2022.

Multi-Megapixel Hybrid IP Camera (2019). StarDot Technologies, <http://www.stardot.com/products/netcam-sc-camera>, last  
access: November 1, 2022.